



## 16M Telescopic Boom For Excavator Bucket 0.8CBM 1CBM

Our Product Introduction

for more products please visit us on excavatorlongarm.com

### Basic Information

- Place of Origin: Guangdong Province, China
- Brand Name: Kaiping Zhonghe Machinery Manufacturing Co. Ltd
- Certification: CE, patent, ISO
- Model Number: Excavator telescopic boom sliding arm 098
- Minimum Order Quantity: 1 set / piece
- Price: USD 30-7000 EXW price
- Packaging Details: bubble / wooden cases/ others
- Delivery Time: 5-25/works
- Payment Terms: T/T, L/C
- Supply Ability: 7 sets per week



### Product Specification

- Features: High Effective And Longer Life-span
- Cylinders: High Quality Improved Cylinders
- Material: Q355B, High Quality Steel Material
- Warranty: 6 Months For The Arm
- Digging Depth(m): 6m, 12m, 16m, 18m
- Patents: CE, ISO9001
- Key Word: Telescopic Arm For Sale
- Painting: Premium Painting, Three Layers Paintings
- Color: Yellow, Red, White, Blue, Customized
- OEM / ODM: Available
- Highlight: **1CBM Excavator Telescopic Boom,  
16M Excavator Telescopic Boom,  
0.8CBM Excavator Telescopic Boom**



#### Warranty:

**6 months for the telescopic boom  
3 months for the bucket**

### More Images



Product Description

Excavator Telescopic Boom Sliding Arm Q355B High Efficiency

**Note:** There are more than **400+ clients** who chose our excavator telescopic boom sliding arm More than **900 sets** sliding arm are sold.

Our Clients Include:



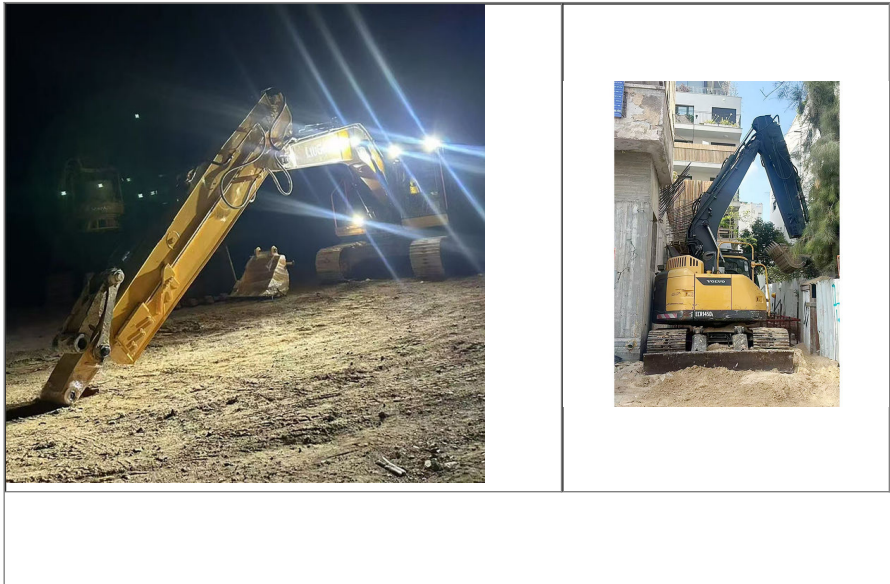
Introduction of one set of Oursliding dipper boom:

\* Front Arm Extend and Retract \*Deeper Digging Depth \*Smaller Swing Range



The excavator telescopic arm exemplifies cutting-edge design, merging advanced engineering principles with practical application to enhance excavation efficiency. Its innovative multi-section structure provides extensive reach and flexibility, allowing operators to tackle complex jobs in tight spaces. Crafted from high-strength materials, each segment balances weight and durability, ensuring the arm can handle demanding tasks without compromising maneuverability. Additionally, the integration of sophisticated hydraulic systems delivers exceptional control and accuracy, making the telescopic arm a vital asset in the toolkit of modern excavation professionals.

Installation of one set of excavator telescopic arm:



Our Product Introduction

for more products please visit us on [excavatorlongarm.com](http://excavatorlongarm.com)



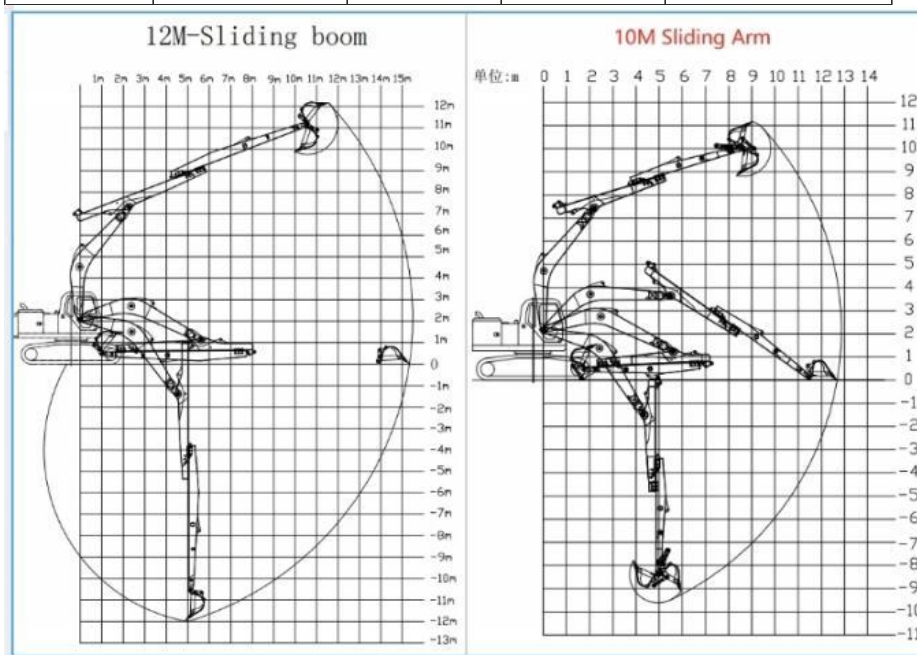


- \* The original breaker pipeline control excavator telescopic arm's the long cylinder
- \* The original bucket cylinder control excavator telescopic arm's bucket cylinder

#### Specifications of Our excavator telescopic boom sliding arm:

\*Special Design \* Full Tests \*Longer Service Life-span \* High working efficiency

Excavator (Ton)	Effective Length (mm)	Max Depth (mm)	Max Radius (mm)	Bucket Capacity (cbm)
12-15T	5700	8000	10400	0.2-0.3
20-25T	9150	10000	13000	0.4-0.7
20-25T	11000	12000	15200	0.4-0.7
30-35T	11000	12000	15800	0.6-0.9
40-45T	12100	16000	19200	0.8-1.3



Details of one set of excavator telescopic boom sliding arm:

- \* Professional \*Full Model



The double limit design of the sliding cylinder prevents cylinder jolting and over-pulling.



Telescopic cylinder double oil seal design extends the service life of the cylinder



Cover plates are cut from a whole piece but not spliced, to be more firm and not easy to deform.



Built-in wear-resistant plastic slider, Easy to replace and maintain



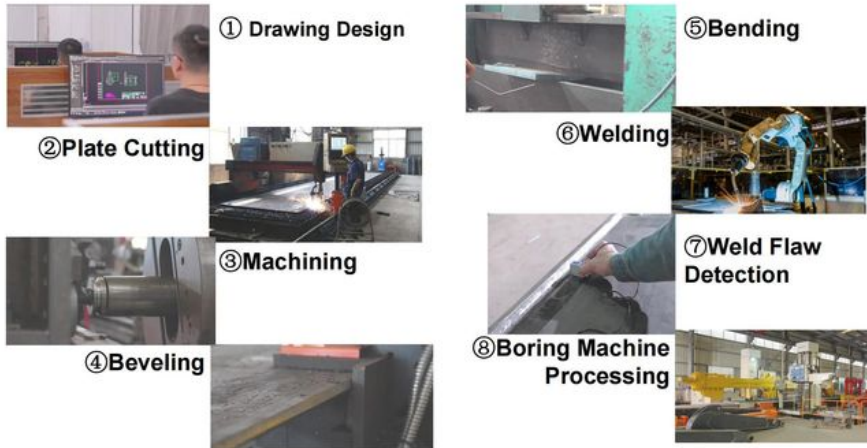
The tube has leakage holes to reduce water accumulation inside the arm tube, thereby reducing internal corrosion.



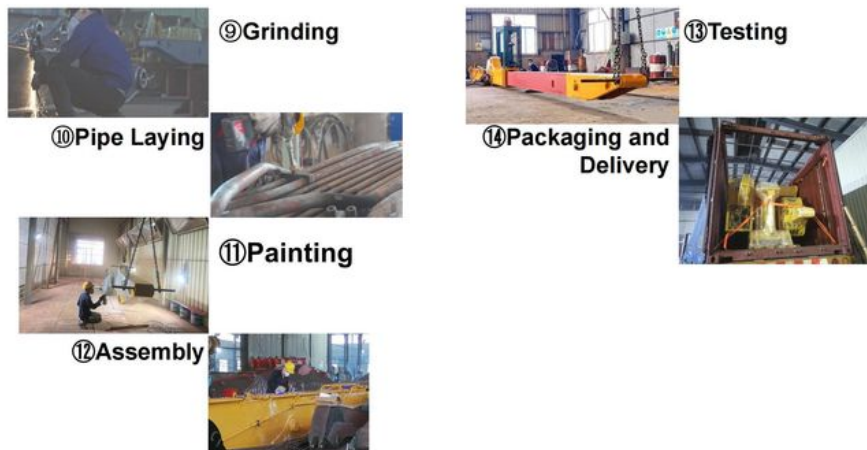
**Production Details of Ourexcavator telescopic boom sliding arm:**

\*High precision machines \*Standard production line \*Strict tests and supervision \* More than 8 years experience

## Product Manufacturing Process



## Product Manufacturing Process



### What's the purpose of beveling before welding?

Beveling before welding serves to create a tapered edge on the metal surfaces, which facilitates better penetration of the weld joint. This process enhances the strength and integrity of the weld by allowing for a fuller fusion between the materials, reducing the risk of defects such as cracks or incomplete welds. Additionally, beveling helps in achieving a more uniform weld bead and can improve the overall appearance of the finished product. By preparing the edges properly, beveling ensures a more efficient and durable welding process.

### What's the purpose of processing by large double boring machine?

The purpose of processing with a large double boring machine is to achieve precise and efficient machining of large workpieces, particularly in applications requiring accurate hole placement and alignment. This machine's dual-sided capability allows for simultaneous boring operations, significantly reducing cycle times and enhancing productivity. By employing advanced technology, it ensures consistent quality and dimensional accuracy, making it ideal for heavy-duty industries such as aerospace, automotive, and construction. Overall, the large double boring machine streamlines manufacturing processes while maintaining high standards of precision.

### What's the purpose of weld flaw detection?

The purpose of weld flaw detection is to identify and assess imperfections or defects in welded joints that could compromise structural integrity and safety. By employing various non-destructive testing methods, such as ultrasonic, radiographic, or magnetic particle inspections, weld flaw detection ensures that any issues—such as cracks, voids, or incomplete fusion—are detected early. This process is crucial for maintaining high-quality standards in construction and manufacturing, ultimately preventing failures that could lead to costly repairs, accidents, or safety hazards.

**Certifications of Our excavator telescopic boom sliding arm:**

## 4. Certifications



**Feedback from Clients Who Chose Our excavator telescopic boom sliding arm:**

\* Serve very well \* Longer service life-span \* Easy operation \* Stable and Safe



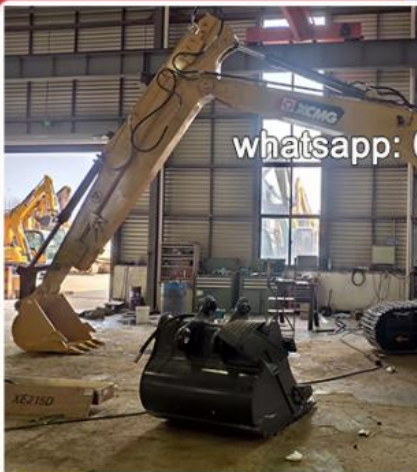
# Feedback from Clients



from Tonny:  
Very excellent telescopic boom.  
on my pc 200 excavator suitably.



from Jason:  
cool, the telescopic boom  
works effectively. suitable for  
digging.



from David:  
very nice service.  
The boom works very good.  
safe and balanced operation



from Kevin:  
suitable for digging caisson.  
save energy.

whatsapp: 0086 13822325403

## Contact Us:

\* Professional \*24Hour Available \*Easy going

Kaiping Zhonghe Machinery is a big Manufacturer of Excavator Arms and Booms

Key word: long reach boom excavator, pile arm pile boom, demolition arm, shorten arm/ tunnel arm, rock arm rock boom, telescopic arm, etc

Welcome to contact for a big discount!

Whatsapp: [+86 13822325403](https://wa.me/8613822325403)

Email: [aria@excavatorboomarm.com](mailto:aria@excavatorboomarm.com)

[13822325403@163.com](mailto:13822325403@163.com)

Website link: [www.excavatorlongarm.com](http://www.excavatorlongarm.com)



Jiangmen Kaiping Zhonghe Machinery Manufacturing Co., Ltd

+86 13822325403

[aria@excavatorboomarm.com](mailto:aria@excavatorboomarm.com)

[excavatorlongarm.com](http://excavatorlongarm.com)

9 Huancui West Road, Cuishanhu New Area, Kaiping City, Guangdong Province, China