



## 12M 16M Telescopic Excavator Telescopic Arm Double Limit Desgin

Our Product Introduction

for more products please visit us on excavatorlongarm.com

### Basic Information

- Place of Origin: China
- Brand Name: Zhonghe Machinery
- Certification: CE, patent, ISO
- Model Number: Telescopic Excavator 09
- Minimum Order Quantity: 1 set / piece
- Price: USD \$3571/sets
- Packaging Details: bubble / wooden cases
- Delivery Time: 20-30/works
- Payment Terms: T/T, L/C
- Supply Ability: 800 sets



### Product Specification

- Product Name: Excavator Telescopic Arm
- Certification: CE, ISO9001
- Suitable: 3-36Ton
- Material: Q355B
- Color: Customer Required
- MOQ: 1 Set
- Length: 4-16M
- Usage: Excavator Work
- Applicable Industries: Construction Works, Energy & Mining
- Condition: New, Brand New
- Showroom Location: Indonesia
- Highlight: 12M Telescopic Excavator Telescopic Arm,  
Telescopic Excavator Telescopic Arm,  
16M Telescopic Excavator Telescopic Arm



### More Images



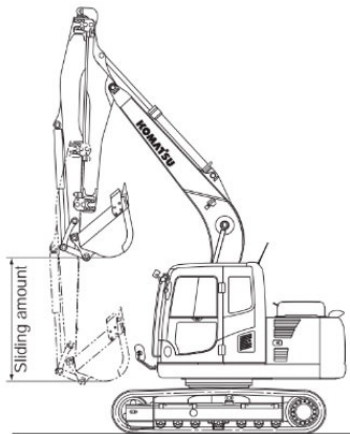
## Product Description

Hydraulic Telescoping Excavator with Bucket Longer Service Life-Span High Efficiency



### Excavator Telescopic Boom Telescopic Arm More Details

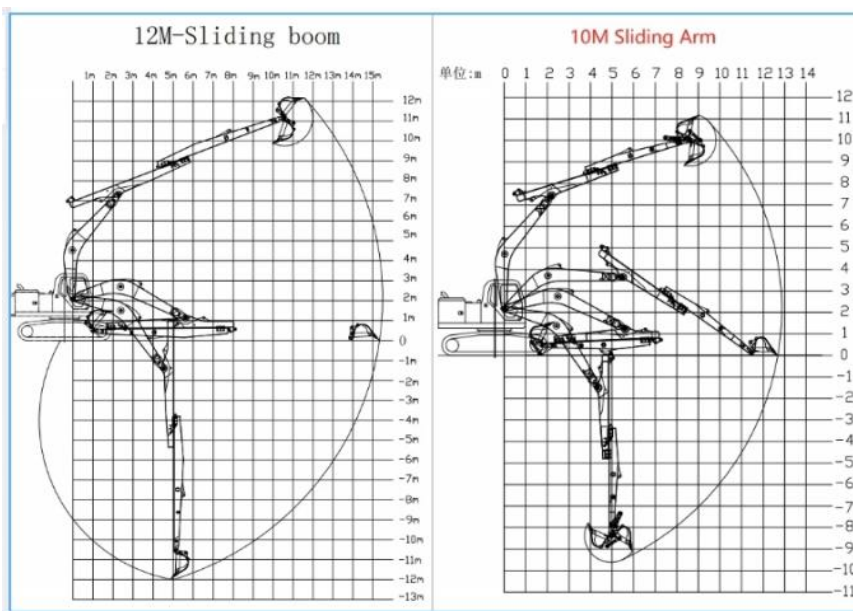
#### EXCAVATORS WITH A TELESCOPIC ARM (Small ARM SLIDING TYPE, with Long Cylinder Inside)



1. Thanks to the hydraulic sliding system in this model, excavator telescopic boom telescopic arm can contract and expand ('telescopes') speedily, **providing high working efficiency and working smoothly in construction work.**
2. The sliding arm with a long cylinder inside, there are sliders between the two steel plates, which in turn minimises the wear which shortens arm life. Our sliders are improved which has longer service life-span than other suppliers.
3. With the arm extended, the excavator can dig deeper than standard excavator arm and boom which do great job in construction work like digging house foundation pit.

### Some specifications references

**Note:** kindly share with us your excavator model. Suitable length will be recommended and model drawing will be sent.

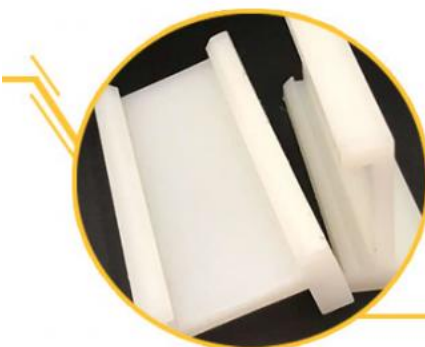


Excavator (Ton)	Effective Length (mm)	Max Depth (mm)	Max Radius (mm)	Bucket Capacity (cbm)
12-15T	5700	8000	10400	0.2-0.3
20-25T	9150	10000	13000	0.4-0.7
20-25T	11000	12000	15200	0.4-0.7
30-35T	11000	12000	15800	0.6-0.9
40-45T	12100	16000	19200	0.8-1.3

## Product Details of Telescopic Arm

# ZHONGHE Sliding Arm

- Compact alternative to a larger model, capable of digging further, and with a significantly smaller footprint.
- Meets the need for powerful machines for deep excavation projects in confined areas.



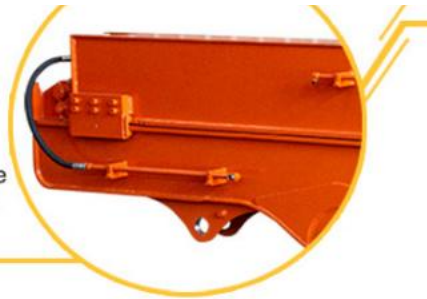
## Easy to Maintain

ZHONGHE sliding arm adopt antiwear nylon sliding plates rather than traditional pulley, which can be replaced quickly and conveniently.



## Robust Sliding Structure

1. The lower cover of the upper sliding arm and the upper cover of the lower fixing arm are both 20mm.
2. Cover plates are cut from a whole piece but not spliced, so as to be more firm and not easy to deform.

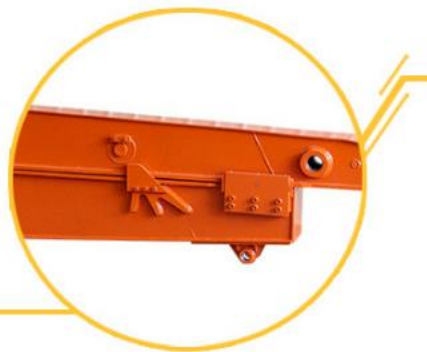



## Avoid Oil Leakage

The double oil seal design for the built-in telescopic cylinder prevents hydraulic oil from leaking, prolongs the service life of the sliding cylinder.

## Long Service Life


1. Double limit design of the sliding cylinder prevents cylinder jolting and overpulling.
2. Steel sliders are welded between the skateboards to resist wear.





**01**  
Panel is cut by CNC plasma machine with less deformation

**02**  
Tolerance within 5-10um, ensure the accuracy of hole



**03**  
Environmentally friendly verified spraying room, professional and beautiful paint finish

**04**  
GMAW-Gas Metal Arc Welding

### Production advantage



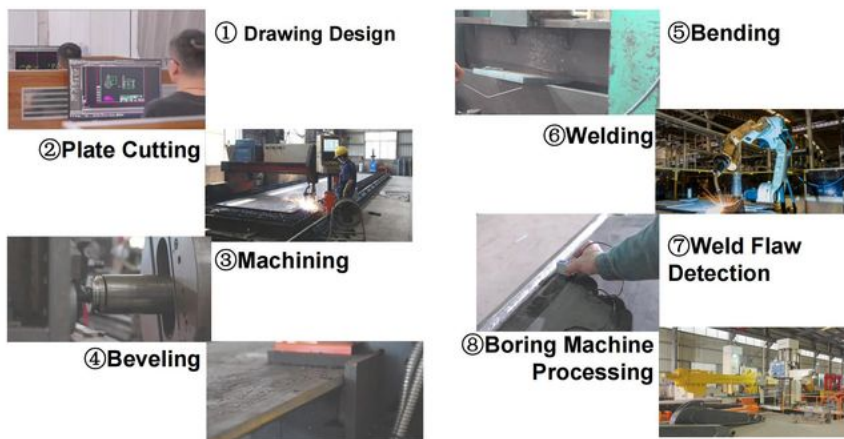
**SOLDER**





Production line of one set of Excavator Telescopic Boom Telescopic Arm:

#### Product Manufacturing Process



## Product Manufacturing Process



⑨Grinding



⑬Testing

⑩Pipe Laying



⑪Painting

⑭Packaging and Delivery



⑫Assembly



### □ **What is the purpose of beveling the sliding arm / telescopic arm steel plate?**

The purpose of beveling the excavator sliding arm or telescopic arm steel plate is to enhance the structural integrity and performance of excavator telescopic arm during operation. Beveling creates a tapered edge that facilitates better welding, ensuring a stronger bond between the plates and reducing the risk of stress concentrations that can lead to cracks or failures. This process also allows for smoother movement and reduced friction between the sliding components, improving the overall efficiency and longevity of excavator telescopic arm. Additionally, beveled edges help in aligning the arm parts accurately, which is crucial for maintaining precision in operations such as excavation and lifting.

---

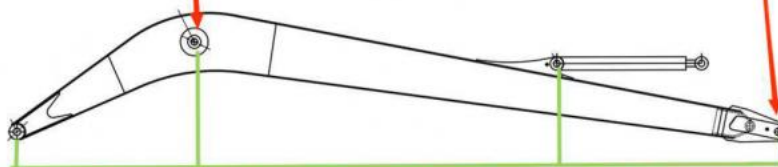
**High production precision machine of Zhonghe Machinery Manufacturer**



## Double-sided boring lathe



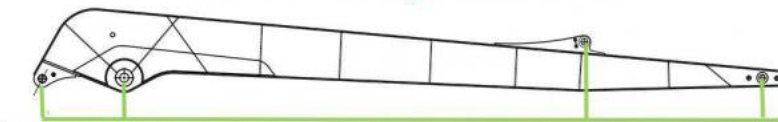
After the excavator boom and arm are assembled, the pins on the boom are drilled to ensure that the pins on the boom are parallel to each other and the cross section of the pin hole is perpendicular to the pin. The double-sided boring machine of the boom makes the hole position more accurate and the quality higher.



Make sure the cross section of the pin hole is perpendicular to the shaft.



Make sure the axis is parallel to the axis



Make sure the cross section of the pin hole is perpendicular to the shaft



Make sure the axis is parallel to the axis

### Large Floor-Standing Double-Sided Boring and Milling Lathe:

The Large Floor-Standing Double-Sided Boring and Milling Lathe represents a significant advancement in precision machining technology. Designed for heavy-duty applications, this versatile machine is engineered to handle large workpieces with exceptional accuracy and efficiency. With its dual-sided configuration, the lathe allows for simultaneous boring and milling operations, significantly reducing processing time and increasing productivity.

Equipped with advanced control systems and robust components, this lathe ensures high-performance machining across a variety of materials, including metals and composites. Its spacious work area accommodates large components, making it ideal for industries such as aerospace, automotive, and heavy machinery. The machine's rigid structure minimizes vibrations, enhancing the overall quality of the finished product.

The intuitive user interface and programmable features enable operators to easily set up complex machining tasks, allowing for greater flexibility in production. Whether for prototyping or high-volume manufacturing, the Large Floor-Standing Double-Sided Boring and Milling Lathe is a crucial asset for any modern machining facility, delivering precision and reliability in every operation.

### About Kaiping Zhonghe Machinery Company Profile:

At Kaiping Zhonghe Machinery Company, we pride ourselves on our commitment to excellence in manufacturing **high-precision machinery**, particularly in the production of **excavator arms and booms**. Our **state-of-the-art facilities** employ advanced engineering techniques and rigorous quality control processes to ensure that every component meets the highest industry standards. We understand that the performance and durability of **excavator attachments** are critical to our clients' success in demanding applications. Therefore, we meticulously source premium materials and utilize cutting-edge technology to **craft robust, reliable products** that enhance operational efficiency and safety. Our dedication to quality is not just a promise; it is the foundation of our reputation as a trusted partner in the construction and heavy equipment industries.

**Key word:** #excavator #excavatortelescopicarm #excavatorshortenarmshortenboom #excavatortunnelarm #tunnelboom #shortenarm #shortenboom #excavatorlongarm #excavatorlongboom #excavatorsidingarm #excavatorsidingboom #arm #boom #telescopicarm #longarm #longboom #bigmachine #heavymachine #bucket #longreacharm #longreachboom #shortenarm #shortenboom #excavatorbucket #bucket #excavatorpilearm #excavatorpileboom #piledrivingarm #piledrivingboom #ripper



### CE certification & Utility model patent certificates we received



### Packaging & Shipping of Our Excavator Arms and Booms





### FAQ(Some frequently asked questions):

**Q1: Are you a manufacturer?**

**A1:** Yes, **Zhonghe Machinery** manufactures various **excavator attachments**, including **demolition arms** and different types of buckets. We focus on a blend of **high-quality steel** and **reasonable prices** for success.

**Q2: How long is the sliding arm for a conventional 20-ton excavator machine?**

**A2:** Our **9-meter sliding arm** allows for digging **more than 8 meters** or close to **9 meters** without lowering the arm.

**Q3: What length does the 10-meter sliding arm in our product price list refer to?**

**A3:** The **10-meter** designation represents the **maximum digging depth** of **over 10 meters**, not the arm's length.

**Q4: What are the advantages of our sliding arm?**

**A4:** First, our **double limit design** reduces vibrations. Second, we use a **wear-resistant block design** for better maintenance and longer service life. Third, it utilizes more **original accessories**, which saves costs. Finally, we have **double-layer oil seals** on our cylinders to lower failure rates.

#### Contact Details:

Kaiping Zhonghe Machinery is a big Manufacturer of Excavator Arms and Booms

Key word: long reach boom excavator, pile arm pile boom, demolition arm, shorten arm/ tunnel arm, rock arm rock boom, telescopic arm, etc

Welcome to contact for a big discount!

Whatsapp: [+86 13822325403](https://wa.me/8613822325403)

Email: [aria@excavatorboomarm.com](mailto:aria@excavatorboomarm.com)

[13822325403@163.com](mailto:13822325403@163.com)

Website link: [www.excavatorlongarm.com](http://www.excavatorlongarm.com)

manufacturer excavatorlongarm longreachboomexcavator excavator excavation



**Jiangmen Kaiping Zhonghe Machinery Manufacturing Co., Ltd**



+86 13822325403



[aria@excavatorboomarm.com](mailto:aria@excavatorboomarm.com)



[excavatorlongarm.com](http://excavatorlongarm.com)

9 Huancui West Road, Cuishanhu New Area, Kaiping City, Guangdong Province, China