



Hydraulic Telescoping Excavator 25m 30m 32m BS900E Wire Rope

Our Product Introduction

for more products please visit us on excavatorlongarm.com

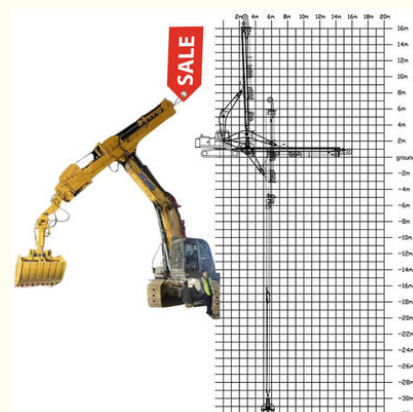
Basic Information

- Place of Origin: Guangdong Province, China
- Brand Name: Kaiping Zhonghe Machinery Manufacturing Co. Ltd
- Certification: CE, patent, ISO
- Model Number: Excavator Telescopic Arm
- Minimum Order Quantity: 1 set / piece
- Price: USD 199.00-USD11999.00
- Packaging Details: bubble / wooden cases/ others
- Delivery Time: 5-25/works
- Payment Terms: T/T, L/C or others as you request
- Supply Ability: 8 sets per week



Product Specification

- Color: Red, Yellow, Blue White Customized
- Warranty: 6 Months For Arm
- Wire Rope: Multiple Strand Wire Rope
- Suitable Excavators: 20ton - 120ton
- Connectors: High Quality And Thicken Connectors
- OEM/ODM: Available
- Maintenance: Easy Maintenance
- Digging Depth(m): 18m 20m 25m 30m 32m
- Material: BS900E, Lighter And Stronger
- Key Word: Telescopic Excavator Arm
- Design: High Efficiency, Wear Resistant
- Highlight: **BS900E Telescoping Excavator, 25m Telescoping Excavator, Wire Rope Telescoping Excavator**



More Images



Product Description

Excavator Clamshell Telescopic Boom 25m 28m 30m 32m

Introduction of one set of excavator clamshell telescopic boom:

Excavator telescopic arm with clamshell bucket is famous for various working environments like digging house foundation pit. Excavator clamshell telescopic boom is famous for its deep digging depth: 25m 30m 32m. Excavator dipper arm with clamshell bucket is in high demand and hot-sale.

Suitable working environment of excavator clamshell telescopic boom:

* **Construction work:** digging foundation pit, deep pit, etc

Suitable excavator brands with excavator clamshell telescopic boom: Sany Hitachi Komatsu Zoomlion Liebherr, etc



KOMATSU CAT HITACHI VOLVO SUMITOMO

KOBELCO DOOSAN CASE KATO HYUNDAI

JCB LIEBHERR ATLAS TEREX Kubota YANMAR TAKEUCHI IHISCE

SANY SDLG 山东临工 山重建机 STRONG JCM SHANTUI 福田雷沃重工 LOVOL 厦工 XGMA 柳工 LIUGONG 柳工

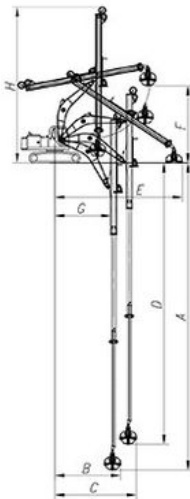
JOHN DEERE ZOOMLION XCMG LONKING 龙工 SUNWARD 山河智能

Specification details of one set of Telescopic Arm With Clamshell Bucket:

| Digging Depth(m) | Excavator Model(ton) | Bucket Capacity of Clamshell Bucket(cbm) | Counterweight(ton) |
|------------------|----------------------|--|--------------------|
| 16 | 20-25T | 0.4 | 0 |
| 18 | | 0.4 | 2 |
| 20 | | 0.6 | 3 |
| 20-22m | 30-33T | 1.5cbm | 0 |
| | 35-38T | | |
| 25m | 30-33T | | 3T |
| | 35-38T | | 0 |
| | 35-38T | 2.2cbm | 6T |
| | 40-50T | | 0 |
| 26-30m | 36-50T | 1.5cbm | 5T |
| | | 1.5cbm | |
| | | 2cbm | 6T |
| | | 2cbm | |
| | | 2.2cbm | 7T |
| | | 2.2cbm | |
| | 40-50T | 2.2cbm | 6T |
| 31-32m | 40-50T | 2.2cbm | 7.2T |
| | | 2.5cbm | 7.2T |

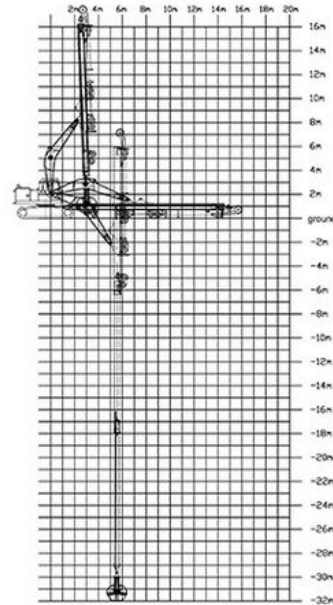
Welcome to send your excavator model to us! Suitable length of excavator boom dipper arm will be recommended soon.

16m Telescopic Arm



| 16M- Telescopic Boom | |
|--|---------|
| A. Maximum vertical digging depth | 16000mm |
| B. Maximum vertical depth digging radius | 7095mm |
| C. Maximum vertical excavation working radius | 8801mm |
| D. Maximum vertical digging depth | 13340mm |
| E. Maximum vertical excavation working radius | 13589mm |
| F. Maximum unloading height | 8044mm |
| G. Minimum turning radius | 6150mm |
| H. The minimum turning radius is the height of the whole machine | 8087mm |

32m Telescopic Arm



Model drawing of 16m telescopic arm with clamshell bucket

Model drawing of 32m telescopic arm with clamshell bucket

More details of one set of excavator dipper arm

- * Better design: work high efficiency and smoothly.
- * Safe design: stable operation
- * Excellent design: longer service life-span



Four pulley design

There are two sliding wheels on the top and two on the bottom, which separate the high-pressure hose and the wire rope to reduce mutual wear. Less wear can extend the service life.



Adopt 30mm main rope

We use thicker wire ropes, which can withstand greater tension, are not easy to break, and withstand greater pressure. The wire ropes are highly wear-resistant and have a long service life.



26mm auxiliary wire rope

Here is the auxiliary wire rope, which is used to make the telescopic arm retractable when it is extended horizontally.



Ningbo connector

It is made of metal and has high compression resistance and expansion capacity. It is easy to load and unload, and can be loaded and unloaded freely.



High Quality----Nylon Sliders

Sliding block, it is nylon material, it can reduce grinding. Our sliding wheel is POM Material, with high mechanical strength and rigidity.



lubrication concentrate system

Many holes, many holes on the top and at the side, it is easy and convenient for the operator to refill the lubrication oil, they all concentrate on the front of arm.



* **High quality wire rope we adopt:** multiple strand wire rope, which can bear huge stress and not easy cracking



* **High quality steel material:** BS900E purchased from Banshan Steel Company
 Every steel plate has certifications which ensure high quality
 BS900E material is lighter and stronger which improve the working efficiency

Our steel plates are purchase from BaoGang Company which is a big and famous steel material company.

[illegible]

| | | | | | |
|--|--|--|--|---|--|
|  宝山区钢铁股份有限公司 Baoshan Iron & Steel Co., Ltd. | | 产品质量证明书 INSPECTION CERTIFICATE | |  | |
| 地址：上海市宝山区 Shanghai Baoshan Iron & Steel Co., Ltd. | | 标准：GB 1591-2008 规格：Q235B | | 重量：1000kg 数量：1000000 | |
| 产品名称：Q235B钢板 Product Name: Q235B Steel Plate | | 规格：Q235B Specification: Q235B | | 重量：1000kg Weight: 1000kg | |
| 规格：Q235B Specification: Q235B | | 重量：1000kg Weight: 1000kg | | 数量：1000000 Quantity: 1000000 | |
| 重量：1000kg Weight: 1000kg | | 数量：1000000 Quantity: 1000000 | | 重量：1000kg Weight: 1000kg | |
| 数量：1000000 Quantity: 1000000 | | 重量：1000kg Weight: 1000kg | | 数量：1000000 Quantity: 1000000 | |
| 重量：1000kg Weight: 1000kg | | 数量：1000000 Quantity: 1000000 | | 重量：1000kg Weight: 1000kg | |
| 数量：1000000 Quantity: 1000000 | | 重量：1000kg Weight: 1000kg | | 数量：1000000 Quantity: 1000000 | |
| 重量：1000kg Weight: 1000kg | | 数量：1000000 Quantity: 1000000 | | 重量：1000kg Weight: 1000kg | |
| 数量：1000000 Quantity: 1000000 | | 重量：1000kg Weight: 1000kg | | 数量：1000000 Quantity: 1000000 | |
| 重量：1000kg Weight: 1000kg | | 数量：1000000 Quantity: 1000000 | | 重量：1000kg Weight: 1000kg | |
| 数量：1000000 Quantity: 1000000 | | 重量：1000kg Weight: 1000kg | | 数量：1000000 Quantity: 1000000 | |
| 重量：1000kg Weight: 1000kg | | 数量：1000000 Quantity: 1000000 | | 重量：1000kg Weight: 1000kg | |
| 数量：1000000 Quantity: 1000000 | | 重量：1000kg Weight: 1000kg | | 数量：1000000 Quantity: 1000000 | |
| 重量：1000kg Weight: 1000kg | | 数量：1000000 Quantity: 1000000 | | 重量：1000kg Weight: 1000kg | |
| 数量：1000000 Quantity: 1000000 | | 重量：1000kg Weight: 1000kg | | 数量：1000000 Quantity: 1000000 | |
| 重量：1000kg Weight: 1000kg | | 数量：1000000 Quantity: 1000000 | | 重量：1000kg Weight: 1000kg | |
| 数量：1000000 Quantity: 1000000 | | 重量：1000kg Weight: 1000kg | | 数量：1000000 Quantity: 1000000 | |
| 重量：1000kg Weight: 1000kg | | 数量：1000000 Quantity: 1000000 | | 重量：1000kg Weight: 1000kg | |
| 数量：1000000 Quantity: 1000000 | | 重量：1000kg Weight: 1000kg | | 数量：1000000 Quantity: 1000000 | |
| 重量：1000kg Weight: 1000kg | | 数量：1000000 Quantity: 1000000 | | 重量：1000kg Weight: 1000kg | |
| 数量：1000000 Quantity: 1000000 | | 重量：1000kg Weight: 1000kg | | 数量：1000000 Quantity: 1000000 | |
| 重量：1000kg Weight: 1000kg | | 数量：1000000 Quantity: 1000000 | | 重量：1000kg Weight: 1000kg | |
| 数量：1000000 Quantity: 1000000 | | 重量：1000kg Weight: 1000kg | | 数量：1000000 Quantity: 1000000 | |
| 重量：1000kg Weight: 1000kg | | 数量：1000000 Quantity: 1000000 | | 重量：1000kg Weight: 1000kg | |
| 数量：1000000 Quantity: 1000000 | | 重量：1000kg Weight: 1000kg | | 数量：1000000 Quantity: 1000000 | |
| 重量：1000kg Weight: 1000kg | | 数量：1000000 Quantity: 1000000 | | 重量：1000kg Weight: 1000kg | |
| 数量：1000000 Quantity: 1000000 | | 重量：1000kg Weight: 1000kg | | 数量：1000000 Quantity: 1000000 | |
| 重量：1000kg Weight: 1000kg | | 数量：1000000 Quantity: 1000000 | | 重量：1000kg Weight: 1000kg | |
| 数量：1000000 Quantity: 1000000 | | 重量：1000kg Weight: 1000kg | | 数量：1000000 Quantity: 1000000 | |
| 重量：1000kg Weight: 1000kg | | 数量：1000000 Quantity: 1000000 | | 重量：1000kg Weight: 1000kg | |
| 数量：1000000 Quantity: 1000000 | | 重量：1000kg Weight: 1000kg | | 数量：1000000 Quantity: 1000000 | |
| 重量：1000kg Weight: 1000kg | | 数量：1000000 Quantity: 1000000 | | 重量：1000kg Weight: 1000kg | |
| 数量：1000000 Quantity: 1000000 | | 重量：1000kg Weight: 1000kg | | 数量：1000000 Quantity: 1000000 | |
| 重量：1000kg Weight: 1000kg | | 数量：1000000 Quantity: 1000000 | | 重量：1000kg Weight: 1000kg | |
| 数量：1000000 Quantity: 1000000 | | 重量：1000kg Weight: 1000kg | | 数量：1000000 Quantity: 1000000 | |
| | | | | | |

* **High quality thickened connectors:** can bear huge stress and not easy cracking even though working at heavy duty work



Front excavator attachments of one set of excavator dipper arm:

Accessories for the three-section telescopic arm



Orange peel grapple

Structural composition: hydraulic cylinder, gripper, link body.

Working Principle: The excavator provides power to drive the cylinder to open and close, and the balance valve is used to synchronize the cylinder.



Clamshell bucket

Structural composition: The main connecting frame, bucket flap, and oil cylinder are composed of three parts.

Working principle: The excavator provides power, pressure, and flow to drive the oil cylinder to move, and the shell bucket is opened and closed through the extension and contraction of the oil cylinder.



***Can Carry Bucket:**

Can Carry Bucket:
Used for digging sand soil silt dirt from the bottom



*** Bucket Grapple**

Used for grabbing stone gravel etc.

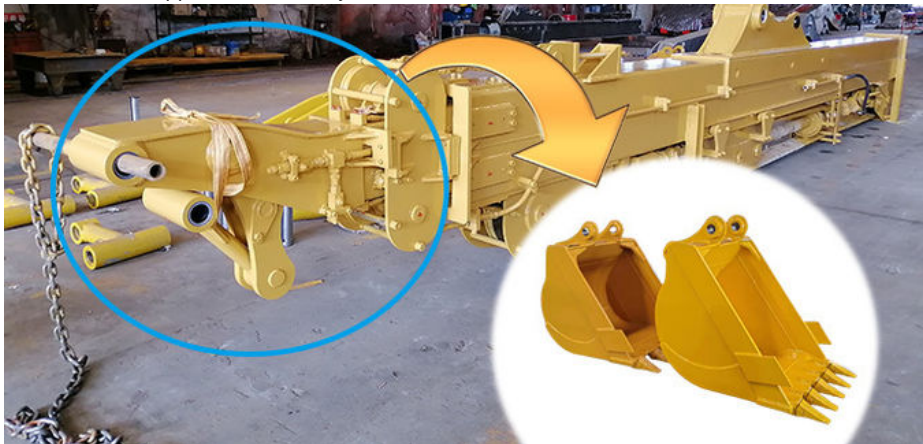
The reinforced design of bucket grapple with longer service life-span and high working efficiency



*** Standard Bucket**

Used for digging sand soil silt dirt etc

The excavator dipper arm can carry standard bucket and clamshell bucket



Production Details of one set of excavator dipper arm

*** Main equipments of production line we have. Every machine is well maintained**

Main equipments of production line



Bending machine



CNC Plasma and flame integrated feeder



Floor-type boring and milling machine



Milling machine



Air compressor



Sandblasting machine



Sawing machine



Lathe



Drilling machine



Beveling machine



Rolling machine



Floor-type double-sided boring machine

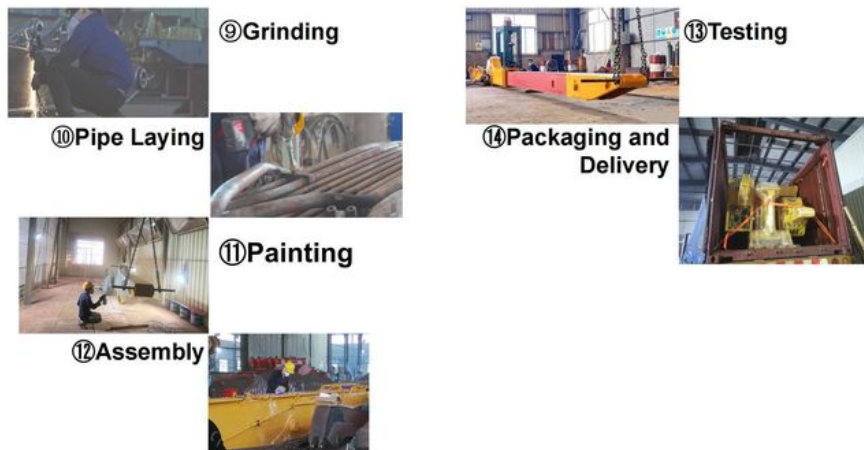
Production Line of one set of teledipper excavator:

*drawing design *plate cutting *machining *beveling *bending *welding *weld flaw detection *boring machine processing
*grinding *pipe laying *painting *assembly *testing *packaging and delivery

Product Manufacturing Process



Product Manufacturing Process



Engineering Cases of Excavator dipper arm:



Cleaning and dredging



Telescopic arm test



Bridge construction projects



Deep pit work



For Deep foundation pit construction project



For unloading materials



For Large-scale earthworks



Introduction of Kaiping Zhonghe Machinery Company:
 * Experienced *More than 8 years experienced *Professional



The Exhibition We Attended:

- * 2023 CHANGSHA INTERNATIONAL CONSTRUCTION EQUIPMENT EXHIBITION
- * 2024 Bauma Exhibition
- * 2025 CHANGSHA INTERNATIONAL CONSTRUCTION EQUIPMENT EXHIBITION

Exhibitions We Attended

2023 CHANGSHA INTERNATIONAL CONSTRUCTION EQUIPMENT EXHIBITION



2024 Bauma Exhibition



2025 CHANGSHA INTERNATIONAL CONSTRUCTION EQUIPMENT EXHIBITION



Certifications:

* Professional * Experienced * High Quality * 8 years experiences

manufacturer excavatorlongarm longreachboomexcavator excavator excavation excavatorshortenarm excavatorshortenboom
tunnel tunnelarm tunnelboom



excavatorlongarm.com

9 Huancui West Road, Cuishanhu New Area, Kaiping City, Guangdong Province, China