



Excavator Telescopic Boom With Clamshell Bucket / Grapple 25m 30m 32m

Our Product Introduction

for more products please visit us on excavatorlongarm.com

Basic Information

- Place of Origin: Guangdong Province, China
- Brand Name: Kaiping Zhonghe Machinery Manufacturing Co. Ltd
- Certification: CE, patent, ISO
- Model Number: Telescopic Boom Excavator 015
- Minimum Order Quantity: 1 set / piece
- Price: USD 199.00-USD10999.00
- Packaging Details: bubble / wooden cases
- Delivery Time: 5-25/works
- Payment Terms: T/T, L/C or others as you request
- Supply Ability: 8 sets per week



Product Specification

- Color: Red, Yellow, Blue White Customized
- Suitable Excavators: 20ton - 120ton
- Digging Depth(m): 18m 20m 25m 30m 32m
- Material: BS900E, Lighter And Stronger
- Maintenance: Easy Maintenance
- Design: High Efficiency, Wear Resistant
- Key Word: Telescopic Excavator Arm
- Wire Rope: Mutiple - Round Wire Rope, Longer Service Life-span
- Highlight: **25m Excavator Telescopic Boom, Clamshell Excavator Telescopic Boom, Grapple Excavator Telescopic Boom**



More Images



Product Description

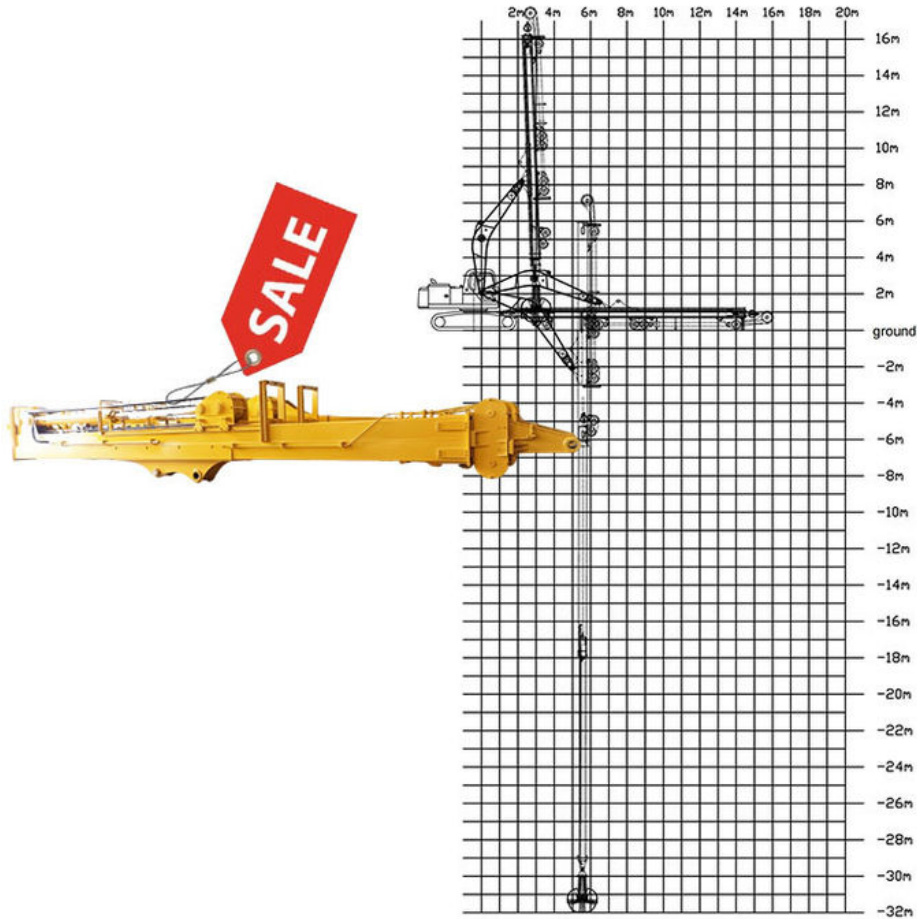
Excavator Telescopic Boom Telescopic Arm with Clamshell Bucket / Grapple 25m 28m 30m 32m

Introduction of one set of Kaiping Zhonghe Machinery's excavator telescope:

Excavator dipper arm with clamshell bucket is a common tool in construction work. Its famous for its long reach and deeper digging depth. For example, 18ton excavator can carry a 18m telescopic boom excavator, the digging depth reach 18m.

Suitable working environment of excavator telescopic arm with clamshell bucket / grapple:

* **Construction work:** digging long reach like foundation pit, deep pit etc



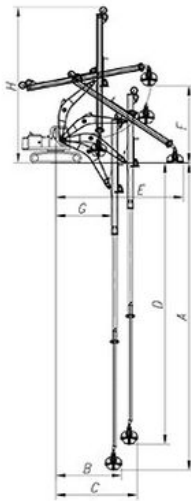
Specification details of one set of telescopic dipper arm

Digging Depth(m)	Excavator Model(ton)	Bucket Capacity of Clamshell Bucket(cbm)	Counterweight(ton)
12	20-25T	0.6	0
14		0.4	0
16		0.4	0
18		0.4	2
20	26-28	0.6	3
20-22m	30-33T	1.5cbm	0
	35-38T		3T
	30-33T		0
	35-38T		0
25m	35-38T	2.2cbm	6T
	40-50T		0
26-30m	36-50T	1.5cbm	5T
		1.5cbm	
		2cbm	6T
		2cbm	
		2.2cbm	7T
		2.2cbm	
31-32m	40-50T	2.2cbm	6T
		2.2cbm	7.2T

Welcome to send your excavator model to us! Suitable length will be recommended soon.

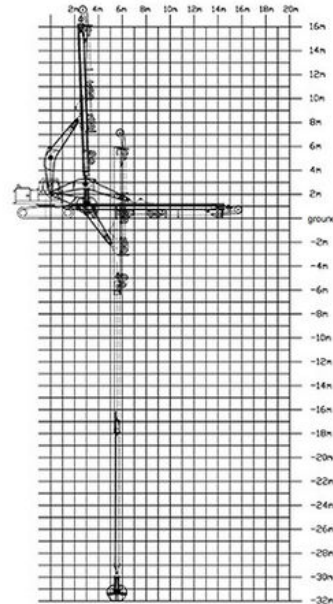
Model drawing of 16m telescopic arm for excavator, model drawing of 32m telescopic arm for excavator are as below:

16m Telescopic Arm



16M- Telescopic Boom	
A. Maximum vertical digging depth	16000mm
B. Maximum vertical depth digging radius	7095mm
C. Maximum vertical excavation working radius	8801mm
D. Maximum vertical digging depth	13340mm
E. Maximum vertical excavation working radius	13586mm
F. Maximum unloading height	8044mm
G. Minimum turning radius	6150mm
H. The minimum turning radius is the height of the whole machine	8087mm

32m Telescopic Arm



More details of one set of telescopic dipper arm:

- * Four pulley design: There are two sliding wheels on the top and two on the bottom, which separate the high-pressure hose and the wire rope to reduce mutual wear. Less wear can extend the service life of the telescopic dipper arm.
- * Adopt 30mm main rope: We use thicker wire ropes, which can withstand greater tension, are not easy to break, and withstand greater pressure. The wire ropes of telescopic dipper arm are highly wear-resistant and have a long service life.
- * Ningbo connector: It is made of metal and has high compression resistance and expansion capacity. Telescopic dipper arm is easy to load and unload, and can be load and unload, and can be loaded and unloaded freely.
- * High Quality----Nylon Sliders: sliding block, it is nylon material, it can reduce grinding. Our sliding wheel is POM Material, with high mechanical strength and rigidity.
- * Lubrication concentrate system: Many holes, many holes on the top and at the side, it is easy and convenient for the operator to refill lubrication oil, they all concentrate on the front of arm.



Four pulley design

There are two sliding wheels on the top and two on the bottom, which separate the high-pressure hose and the wire rope to reduce mutual wear. Less wear can extend the service life.



Adopt 30mm main rope

We use thicker wire ropes, which can withstand greater tension, are not easy to break, and withstand greater pressure. The wire ropes are highly wear-resistant and have a long service life.



26mm auxiliary wire rope

Here is the auxiliary wire rope, which is used to make the telescopic arm retractable when it is extended horizontally.



Ningbo connector

It is made of metal and has high compression resistance and expansion capacity. It is easy to load and unload, and can be loaded and unloaded freely.



High Quality----Nylon Sliders

Siding block, it is nylon material, it can reduce grinding. Our sliding wheel is POM Material, with high mechanical strength and rigidity.



lubrication concentrate system

Many holes, many holes on the top and at the side, it is easy and convenient for the operator to refill the lubrication oil, they all concentrate on the front of arm.



Double oil seal design prevents hydraulic oil from leaking, prolongs the service life of the cylinder



Clamshell bucket adopts double cylinders---less failure rate easy maintenance, not easy leak oil

1.2 Details of Three-section telescopic arm

三段式伸缩臂细节



The external hose pulley separates the hose from the wire rope, avoids the friction between the wire rope and the hose, reduces failures, and makes maintenance more convenient



Centralized lubrication system
--easy for later maintenance



Stop valve - easy to replace
attachments
lessen oil leakage





Front attachments of one set of excavator telescopic arm:

Accessories for the three-section telescopic arm



Orange peel grapple

Structural composition: hydraulic cylinder, gripper, link body.

Working Principle: The excavator provides power to drive the cylinder to open and close, and the balance valve is used to synchronize the cylinder.



Clamshell bucket

Structural composition: The main connecting frame, bucket flap, and oil cylinder are composed of three parts.

Working principle: The excavator provides power, pressure, and flow to drive the oil cylinder to move, and the shell bucket is opened and closed through the extension and contraction of the oil cylinder.



* Excavator Clamshell Bucket:

Used for digging sand soil silt dirt etc

Two types: with teeth type, without teeth type



* Excavator Bucket Grapple

Used for grabbing stone gravel etc



*** Excavator Standard Bucket**

Used for digging sand soil silt dirt etc



Production Details of one set of telescopic dipper arm

Main Equipments of Production Line

*** Professional *High Control *Strict Control *High Guaranteed**

Main equipments of production line



Bending machine



CNC Plasma and flame integrated feeder



Floor-type boring and milling machine



Milling machine



Air compressor



Sandblasting machine



Sawing machine



Lathe



Drilling machine



Beveling machine



Rolling machine



Floor-type double-sided boring machine

Production Line

* Every procedure of production of telescopic excavator is under strict control. Director Mr. Lee check the quality of every products regularly. Every design drawing are full tested and checked before producing. Director Mr. Zhao test every products and supervise every products every day.

* Every procedure of production of telescopic excavator is strict proceeded.

Product Manufacturing Process



① Drawing Design

② Plate Cutting



③ Machining



④ Beveling



⑥ Welding

⑤ Bending



⑦ Weld Flaw Detection



⑧ Boring Machine Processing



* **Weld flaw detection** is our must do procedure. Every welding are full tested before entering into next procedure. By doing so, the welding bead is full guaranteed which will not easy crack.

Product Manufacturing Process



⑨Grinding



⑬Testing

⑩Pipe Laying



⑭Packaging and Delivery



⑪Painting

⑫Assembly



Engineering Cases of telescopic excavator:

The feedback from clients is very positive. Many clients mentioned that the telescopic excavator work high efficiency and with lower fail rate comparing with other suppliers.



Cleaning and dredging



Telescopic arm test



Bridge construction projects



Deep pit work



For Deep foundation pit construction project



For unloading materials



For Large-scale earthworks



Introduction of the team of Kaiping Zhonghe Machinery Company:



The Exhibition We Attended:

Exhibitions We Attended

2023 CHANGSHA INTERNATIONAL CONSTRUCTION EQUIPMENT EXHIBITION



2024 Bauma Exhibition



2025 CHANGSHA INTERNATIONAL CONSTRUCTION EQUIPMENT EXHIBITION



The Certifications We Have:

4. Certifications



Contact Details:

Kaiping Zhonghe Machinery is a big Manufacturer of Excavator Arms and Booms

Key word: long reach boom excavator, pile arm pile boom, demolition arm, shorten arm/ tunnel arm, rock arm rock boom, telescopic arm, etc

Welcome to contact for a big discount!

Whatsapp: [+86 13822325403](https://wa.me/8613822325403)

Email: aria@excavatorboomarm.com
13822325403@163.com

Website link: www.excavatorlongarm.com

manufacturer excavatorlongarm longreachboomexcavator excavator excavation excavatorshortenarm excavatorshortenboom tunnel tunnelarm tunnelboom



Jiangmen Kaiping Zhonghe Machinery Manufacturing Co., Ltd



+86 13822325403



aria@excavatorboomarm.com



excavatorlongarm.com

9 Huancui West Road, Cuishanhu New Area, Kaiping City, Guangdong Province, China