



Top 1 BS900E Excavator Telescopic Arm Telescopic Dipper for Excavator

Our Product Introduction

for more products please visit us on excavatorlongarm.com

Basic Information

- Place of Origin: Guangdong Province, China
- Brand Name: Kaiping Zhonghe Machinery Manufacturing Co. Ltd
- Certification: CE, patent, ISO
- Model Number: Telescopic Dipper for Excavator 001
- Minimum Order Quantity: 1 set / piece
- Price: USD \$10000-\$44285/sets
- Packaging Details: bubble / wooden cases / others as you request
- Delivery Time: 20-30/works
- Payment Terms: T/T, L/C
- Supply Ability: 800 sets



Product Specification

- Warranty: 6 Months For The Telescopic Arm And Cylinder
- Product Name: Telescopic Dipper For Excavator
- Technique: Advanced Techniques
- Condition: New, Brand New
- Color: Yellow, Red, Blue, White, As Customer Requires
- After-sales Service Provided: 24Hours Online Support, Video Technical Support
- Application: Excavators
- Capacity: 0.6 Cbm -3 Cbm
- Apply To: 18-60ton Excavator
- Oem/odm: Acceptable, Available
- Weight: 2700-9900KGS
- Material: BS900E Q355B, Q690D, Or Others As You Request

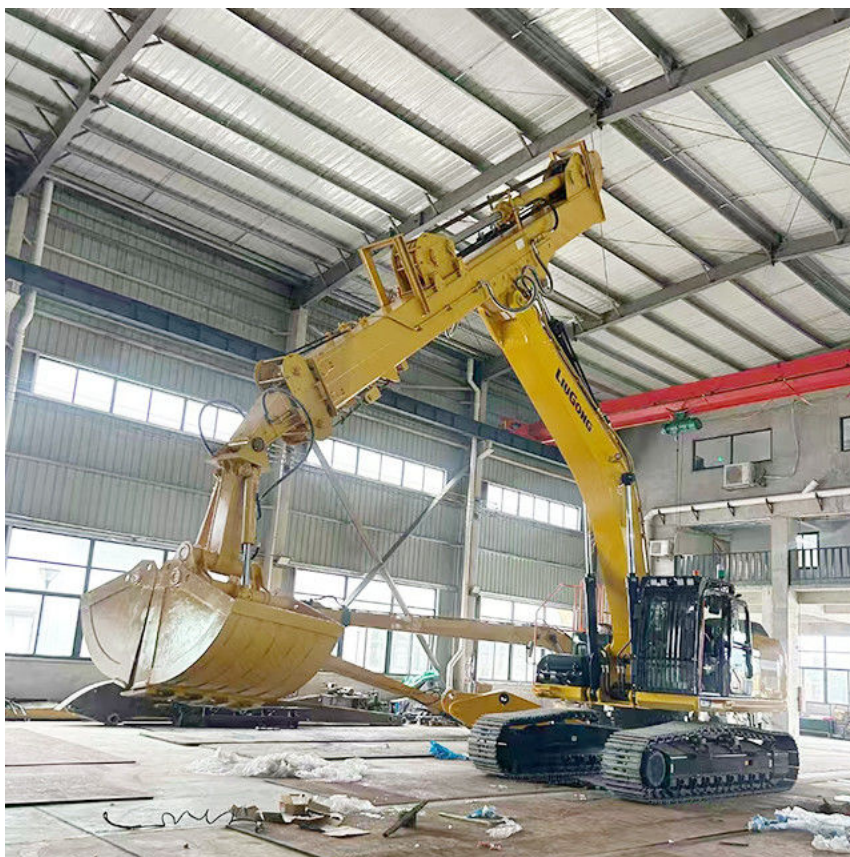


More Images



Product Description

OEM / ODM Telescopic Dipper for Excavator Telescopic Boom Arm



Product Description — Excavator Teledipper

What is an excavator telescopic arm?

Excavator telescopic arm dipper stick is a specialized attachment designed to extend the machine's reach. Comprising multiple extendable sections that can move independently, clamshell telescopic arm excavator enables the excavator to operate effectively in difficult areas and perform tasks at various heights and depths.

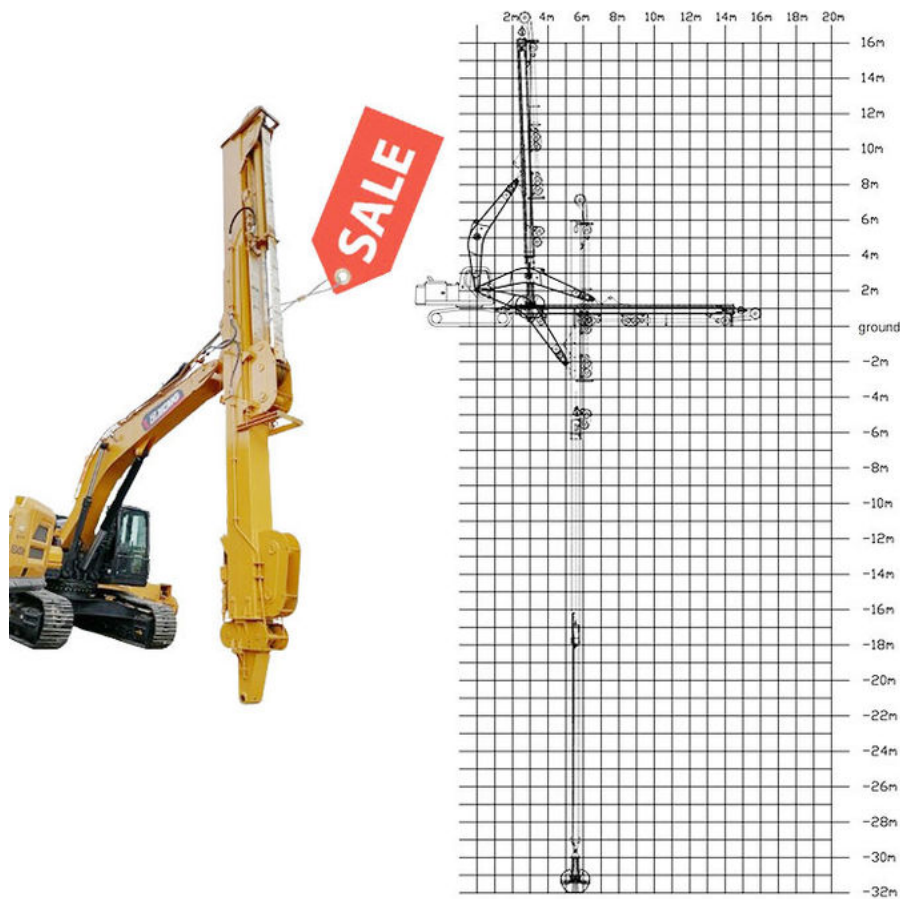
What are your advantages of telescopic clamshell excavator?

Here are the advantages of Kaiping Zhonghe Machinery's telescopic boom arm:

Telescopic dipper for excavator is crafted from BS900E and Q690D materials, ensuring it is both lightweight and durable. To enhance durability, telescopic dipper for excavator has a wall thickness of 6mm. It operates efficiently with nylon sliders and steel pulleys, along with centralized lubrication for all hoses. An external hose pulley on the bucket cylinder makes extendable boom excavator easier to replace and service hoses. The use of an external pulley to separate hoses from the main rope reduces friction and minimizes the risk of damage. Safety is enhanced with a dual-rope system, preventing extension if the main rope fails.

Some specifications of one set of telescopic excavator:

Excavator (ton)	Max Depth (mm)	Effective Length (mm)	Bucket Capacity (cbm)
6-10	10000	7600	0.2-0.3
11-15	14000	10500	0.4-0.6
20-30	16000	12500	0.8-1.5
30-35	20000	15500	1.3-1.66
30-35	25000	20500	1-1.4
40-45	25000	20500	1.8-2.5
40-45	30000	25100	1.4-2



Some installation instructions for one set of telescopic dipper arm are as follow:



Our designs allow for the flexible interchangeability of digging buckets and grab buckets. The clamshell bucket is mainly used for deep excavation tasks, particularly in subway construction projects. On the other hand, the grab bucket is built with enhanced strength, making it effective for grasping stones. Finally, the standard bucket is tailored specifically for the excavator teledipper, incorporating special modifications to fulfill operational requirements. Welcome to send your requirements to us. Suitable recommendation will be sent soon.

Telescopic Dipper for Excavator's Detail Display:





Main Material

1. The telescopic arm can be made of Q690D-Q960 material according to the requirements, with much deeper excavation depth, simple and convenient operation, safe and reliable.

lighter and durable

The external hose pulley separates the hose from the main rope, avoids the friction between the main rope and the hose, reduces failures, and makes maintenance more convenient



Pivot End

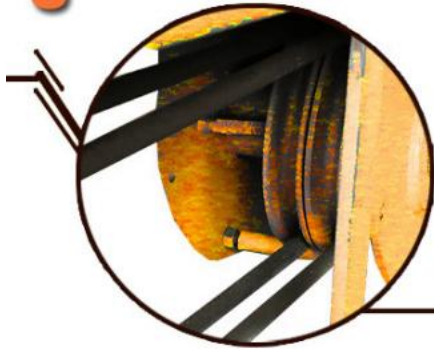
- 01 Centralized lubrication
- 02 Can match bucket and grabber

Rope Structure

- 01 Adopt 30mm main rope
- 02 The upgraded auxiliary rope design makes the pipeline smoother while stretching
- 03 Adopt 26mm auxiliary rope



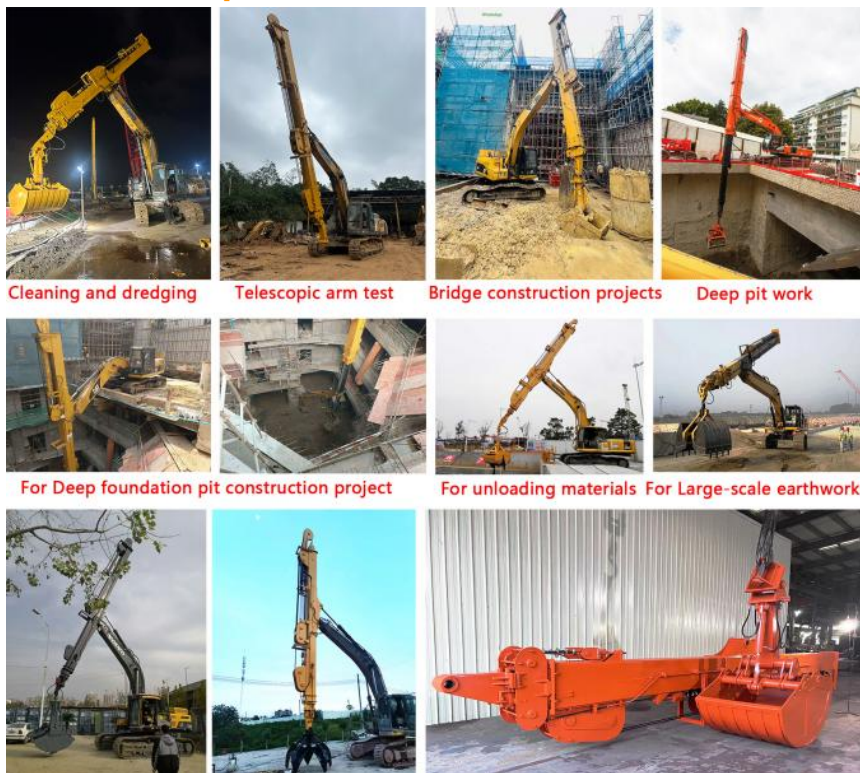
5



Easy To Oil Filling

- 01 Oil filling hole at the second arm front end(to the top slider)
- 02 Oil filling hole position on both sides of the third arm front end(to the top slider)

Kaiping Zhonghe Machinery 's Excavator Clamshell Telescopic Boom Examples:



Some production details of one set of excavator telescopic boom arm:

□

What is the purpose of beveling the long boom arm plate?

Most welding machines in the industry generally achieve a penetration depth of only 3mm. Since our long reach arm long reach boom has a thickness of at least 8mm, not beveling the edges would hinder the welder's ability to fully penetrate the joint. This could result in weak welds, raising the likelihood of weld cracking in the future.

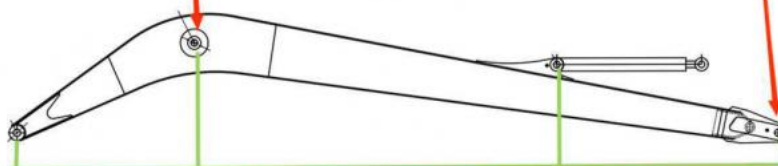
We employ mechanical beveling, in contrast to many other factories that rely on manual beveling (as shown in the figure).

Proceeded by Double-sided Boring Lathe--High Precision Machine

Double-sided boring lathe



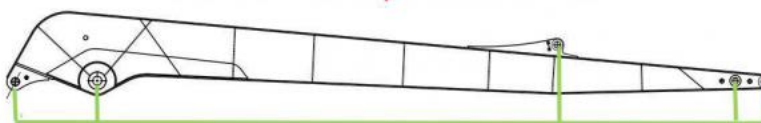
After the excavator boom and arm are assembled, the pins on the boom are drilled to ensure that the pins on the boom are parallel to each other and the cross section of the pin hole is perpendicular to the pin. The double-sided boring machine of the boom makes the hole position more accurate and the quality higher.



Make sure the cross section of the pin hole is perpendicular to the shaft.



Make sure the axis is parallel to the axis



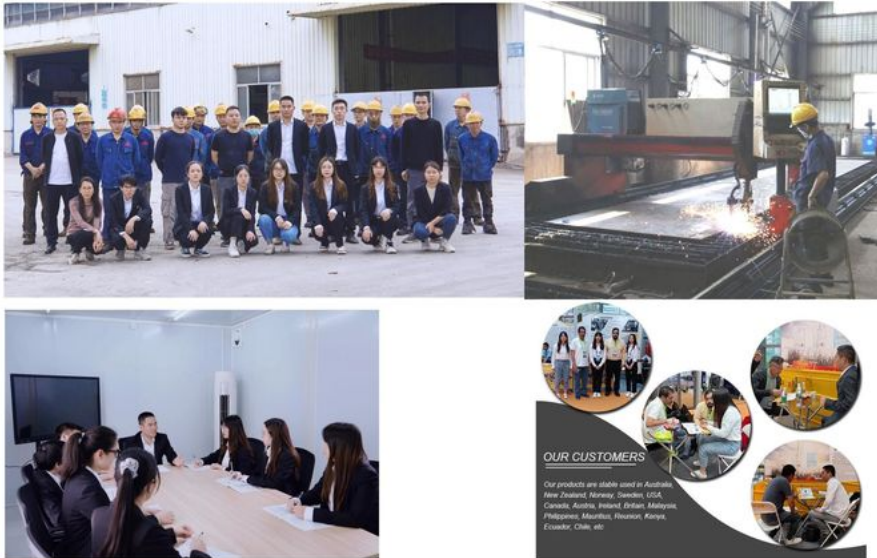
Make sure the cross section of the pin hole is perpendicular to the shaft



Make sure the axis is parallel to the axis

About the Profile of Kaiping Zhonghe Machinery Company:

Introduction of Kaiping Zhonghe Machinery



CE certification & Utility model patent certificates

4. Certifications



Packaging & Shipping Pictures of Our Products



Contact Details:

Kaiping Zhonghe Machinery is a big Manufacturer of Excavator Arms and Booms

Key word: long reach boom excavator, pile arm pile boom, demolition arm, shorten arm/ tunnel arm, rock arm rock boom, telescopic arm, etc

Welcome to contact for a big discount!

Whatsapp: [+86 13822325403](https://wa.me/8613822325403)

Email: aria@excavatorboomarm.com
13822325403@163.com

Website link: www.excavatorlongarm.com

manufacturer excavatorlongarm longreachboomexcavator excavator excavation excavatorshortenarm excavatorshortenboom
tunnel tunnelarm tunnelboom



Jiangmen Kaiping Zhonghe Machinery Manufacturing Co., Ltd



+86 13822325403



aria@excavatorboomarm.com



excavatorlongarm.com

9 Huancui West Road, Guishanhu New Area, Kaiping City, Guangdong Province, China