



Adjustable Excavator Telescopic Arm Telescopic Excavator BS900E Q355B

Our Product Introduction

for more products please visit us on excavatorlongarm.com

Basic Information

- Place of Origin: China
- Brand Name: Zhonghe Machinery
- Certification: CE, patent, ISO
- Model Number: Telescopic Excavator 009
- Minimum Order Quantity: 1 set / piece
- Price: USD \$10000-\$34285/sets
- Packaging Details: bubble / wooden cases
- Delivery Time: 20-30/works
- Payment Terms: T/T, L/C
- Supply Ability: 800 sets



Product Specification

- Warranty: 6 Months
- Product Name: Excavator Telescopic Arm
- Oem/odm: Acceptable
- Condition: New
- Color: As Customer Requires
- Application: Excavator
- Capacity: 0.6-2.5 Cbm
- Apply To: 20-55ton Excavator
- Weight: 2700-9000KGS
- Material: BS900E Q355B, Q690D, Or Others As You Request
- Certification: ISO9001, ISO CE
- Oem: Available
- After-sales Service Provided: 24Hours Online Support, Video Technical Support



More Images



Product Description

30M 32M Telescopic Excavator with Clamshell Bucket Excavator Teledipper



Product Description-----Excavator Teledipper

What is an excavator telescopic arm?

Excavator telescopic boom telescopic arm is a unique attachment designed to enhance the machine's reach. This arm consists of several extendable sections that can move independently, allowing the excavator to operate in challenging locations and engage in tasks across different elevations and depths.

What are your advantages?

Advantages of Kaiping Zhonghe Machinery's excavator telescopic boom telescopic arm:

- 1.The three-section telescopic boom is built using BS900E and Q355B materials, ensuring it remains both lightweight and robust.
- 2.To guarantee longevity, the boom features a wall thickness of 6mm. It operates smoothly thanks to nylon sliders and steel pulleys, along with centralized lubrication for all hoses.
- 3.An external hose pulley on the bucket cylinder simplifies the process of replacing and servicing hoses.
- 4.By using an external pulley to keep hoses separate from the main rope, we minimize friction and the risk of damage.
- 5.The arm's safety is improved with a dual-rope system, which prevents extension in the event of a main rope failure.

Some common size references of one set of excavator teledipper:

Excavator (ton)	Max Depth (mm)	Effective Length (mm)	Bucket Capacity (cbm)
6-10	10000	7600	0.2-0.3
11-15	14000	10500	0.4-0.6
20-30	16000	12500	0.8-1.5
30-35	20000	15500	1.3-1.66
30-35	25000	20500	1-1.4
40-45	25000	20500	1.8-2.5
40-45	30000	25100	1.4-2

Welcome to contact us. Suitable length and model drawing will be sent soon.

Excavator Long Reach Boom and Telescopic Arm Configuration

1. A set of excavator dipper arm
2. Two high-pressure hoses
3. Two pins
4. One two-way foot switch
5. One clamshell bucket

Some installation instructions for one set of excavator long reach boom and telescopic arm

□

Our designs facilitate the interchangeable use of digging buckets and grab buckets.

The clamshell bucket is primarily utilized for deep excavation projects, such as those in subway construction.

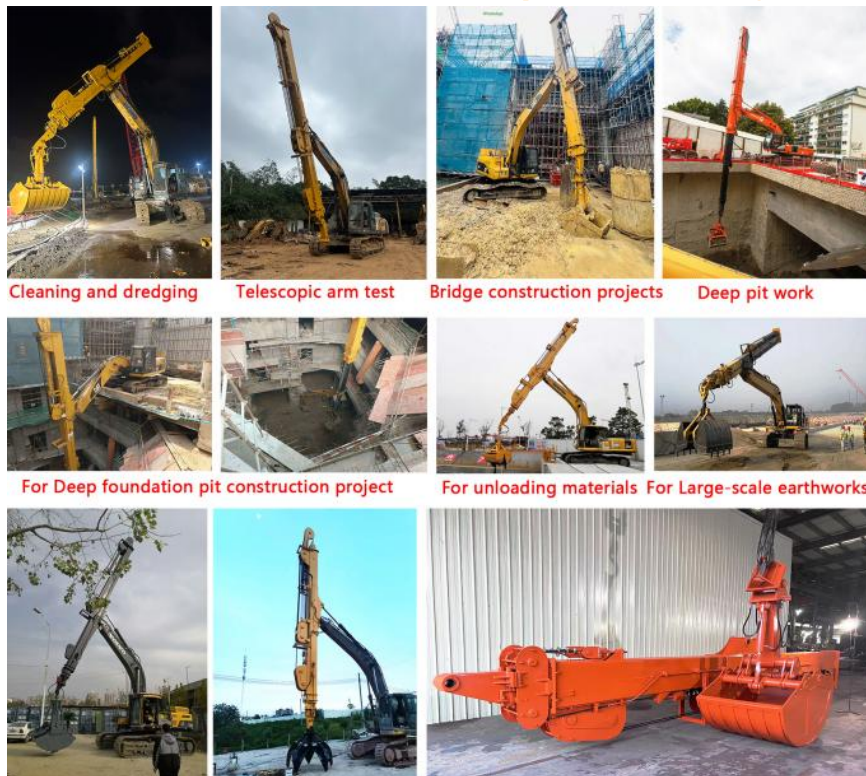
In contrast, the grab bucket possesses greater strength, enabling it to effectively grasp stones.

Lastly, the standard bucket is specifically designed for use with excavator teledipper, requiring unique modifications to meet operational needs.

Excavator Dipper Arm's Detail Display

□

Excavator Clamshell Telescopic Boom Engineering Case



The telescopic arm of the excavator is well-suited for various working conditions:

Narrow Space Operation: In urban construction or underground projects, excavator long reach boom and telescopic arm can efficiently function in confined areas.

Deep Foundation Pit Construction: Excavator clamshell telescopic boom offers enhanced working depth, making it ideal for environments like foundation pits and basements.

Heavy Equipment Compatibility: Designed for tasks that demand high power, excavator telescopic arm can be fitted with heavier breakers for increased efficiency.

Complex Situations: When facing unstable or complex foundations, telescopic arm for excavator can be flexibly extended to enhance operational stability.

Multi-Angle Excavation: Perfect for scenarios requiring excavation from multiple angles, such as pipeline installation or tunnel work.

Large-Scale Earthwork: In earthmoving projects, excavator telescopic arm can quickly adjust to varying excavation depths and widths.

Water Conservancy Projects: In tasks like river dredging or reservoir construction, excavator clamshell telescopic arm adapts well to fluctuating water levels and diverse operating conditions.

□

What is the purpose of beveling the long boom arm plate?

Most welding machines in the industry typically achieve a penetration depth of only 3mm. Given that our long arm plate is at

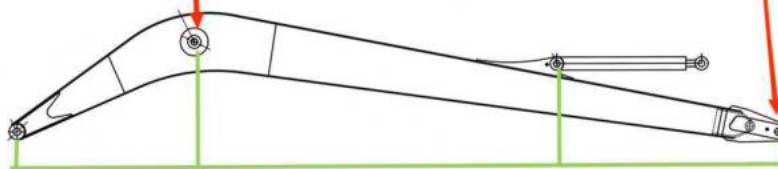
least 8mm thick, failing to bevel the edges would prevent the welder from effectively penetrating the entire joint. This could lead to weak welds, increasing the risk of weld cracking over time.
We utilize mechanical beveling, while many other factories depend on manual beveling (as illustrated in the figure).

High precision machine of Kaiping Zhonghe Machinery Manufacturing Co. Ltd

Double-sided boring lathe



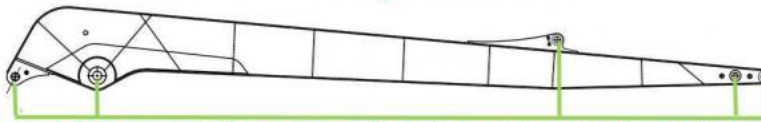
After the excavator boom and arm are assembled, the pins on the boom are drilled to ensure that the pins on the boom are parallel to each other and the cross section of the pin hole is perpendicular to the pin. The double-sided boring machine of the boom makes the hole position more accurate and the quality higher.



Make sure the cross section of the pin hole is perpendicular to the shaft.



Make sure the axis is parallel to the axis



Make sure the cross section of the pin hole is perpendicular to the shaft



Make sure the axis is parallel to the axis

Large Floor-Standing Double-Sided Boring and Milling Lathe:

Enhanced Accuracy and Consistency: This double-sided boring and milling lathe significantly improves the precision and uniformity of machining operations, delivering reliable results.

Post-Welding Processing: Following the welding process, the machine carries out comprehensive boring to ensure the parallelism and perpendicularity of shaft holes.

Key Applications: It is primarily utilized for post-weld boring of the boom, small arm, and bucket, ensuring accurate alignment and fit.

Simultaneous Boring on Both Sides: The lathe is capable of boring both sides simultaneously, which guarantees uniform precision and consistency across both surfaces.

About Kaiping Zhonghe Machinery Company Profile:



CE certification & Utility model patent certificates of Kaiping Zhonghe Machinery



Our products have been exported to more than 60 countries, employing a range of transportation methods including sea, land, and air freight. For packaging, we utilize wooden crates or stretch film to protect the items. Prior to shipping, the goods are meticulously packaged and loaded into containers to ensure their safety throughout the journey.

Main products: excavator long reach booms, demolition arms, 2-3 sections telescopic arms, tunnel arms, standard/rock buckets, grapples, rippers, etc. Hope we can have an opportunity to make a quotation for your reference.

Packaging & Shipping Pictures of Kaiping Zhonghe Machinery



FAQ (Frequently Asked Questions):

Q: Are you a manufacturer?

A: Yes, we are a manufacturer and supplier of excavator arms and attachments. Our factory is exceptionally large, significantly exceeding the size of our competitors' facilities, and is the largest excavator attachment factory in Guangdong Province. We have comprehensive production equipment, and our products have been exported to over 60 countries worldwide.

Q: What distinguishes a shell bucket from a grab bucket in a telescopic arm?

A: Shell buckets are typically more efficient for handling silt and sand, allowing for larger volumes to be dug quickly. However, they lack sufficient digging force for general sand and stone work and are limited by their opening size, which can reduce efficiency. In contrast, grab buckets are better suited for such tasks. Although grab buckets tend to be smaller and heavier, their advantages become evident when dealing with more substantial materials like stones.

Q: Is a single cylinder or a double cylinder preferable for a shell bucket on a telescopic arm?

A: We consistently use a double cylinder design, as it offers lower failure rates, easier maintenance, and reduced oil leakage. While double cylinder shell buckets are heavier and may have slightly less synchronization, single cylinder buckets are lighter and provide better synchronization and grabbing efficiency, albeit at a higher failure rate.

Q: What materials are used for the telescopic arm?

A: The arm tube is constructed from BS900E, while other components are made from Q355B, making them lighter and more durable. We utilize a thickness of 6mm for enhanced strength.

Contact Details:

Kaiping Zhonghe Machinery is a big Manufacturer of Excavator Arms and Booms

Key word: long reach boom excavator, pile arm pile boom, demolition arm, shorten arm/ tunnel arm, rock arm rock boom, telescopic arm, etc

Welcome to contact for a big discount!

Whatsapp: +86 13822325403

Email: aria@excavatorboomarm.com
13822325403@163.com

Website link: www.excavatorlongarm.com

manufacturer excavatorlongarm longreachboomexcavator excavator excavation excavatorshortenarm excavatorshortenboom tunnel tunnelarm tunnelboom



Jiangmen Kaiping Zhonghe Machinery Manufacturing Co., Ltd



+86 13822325403



aria@excavatorboomarm.com



excavatorlongarm.com

9 Huancui West Road, Cuishanhu New Area, Kaiping City, Guangdong Province, China