



Top 1 10M Excavator Telescopic Boom Sliding Arm Deep Digging Depth

Our Product Introduction

for more products please visit us on excavatorlongarm.com

Basic Information

- Place of Origin: Guangdong Province, China
- Brand Name: Kaiping Zhonghe Machinery Manufacturing Co. Ltd
- Certification: CE, patent, ISO
- Model Number: Telescopic Excavator Boom 009
- Minimum Order Quantity: 1 set / piece
- Price: USD 179.00-USD8999.00
- Packaging Details: bubble / wooden cases
- Delivery Time: 5-20/works
- Payment Terms: T/T, L/C or others as you request
- Supply Ability: 7 sets per week

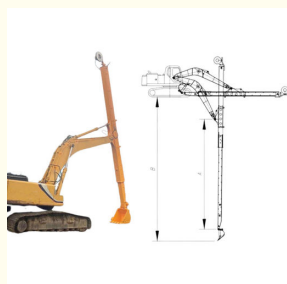


Product Specification

- Features: Telescopic Arm For Excavator
- Material: HG785, Lighter Stronger
- High Efficiency: Yes
- Service Life-span: Longer Service Life-span
- Suitable Excavator: 6 Ton To 50ton Excavator
- Bucket: Available 0.2cbm To 1.2cbm
- Efficiency: High Efficiency Working Smoothly
- Digging Depth(m): 8m 10m 12m 14m 16m 18m



More Images



Deep Digging Depth Telescopic Excavator Telescopic Arm for Excavator

More introduction of one set of telescopic arm for excavator:

Dual-Section Design: The two-section telescopic arm for excavator allows for adjustable lengths, providing operators with the flexibility to reach challenging areas without repositioning the entire excavator.

Extended Reach: With an impressive maximum extension, telescopic arm excavator long reach arm enables deeper digging, precise placement, and improved access to hard-to-reach locations.

Robust Construction: Crafted from high-strength materials, hydraulic telescoping excavator is built to withstand rigorous conditions, ensuring durability and reliability during demanding operations.

Increased Lifting Capacity: Engineered to handle heavier loads, excavator telescopic arm enhances productivity while maintaining stability and safety.

Quick Installation: Designed for easy attachment, excavator long reach telescopic boom integrates seamlessly with various excavator models, minimizing downtime and maximizing efficiency.

Operator-Friendly Controls: The intuitive control system allows for smooth operation, giving operators full command over telescopic boom for excavator's movements for precise and efficient work.



Introduction of Excavator Telescopic Boom Arm with bucket / clamshell bucket:

Digging depth of one set of excavator telescopic boom arm (m): 6M 10M 12M 14M 16M 18M

Bucket capacity(cbm) of excavator telescopic arm: 0.2cbm to 1.2cbm

Working environment of one set of excavator telescopic boom arm: digging sand soil silt dirt, digging house foundation pit, digging at narrow places.

Material of one set of telescopic excavator boom: HG785(lighter and stronger)

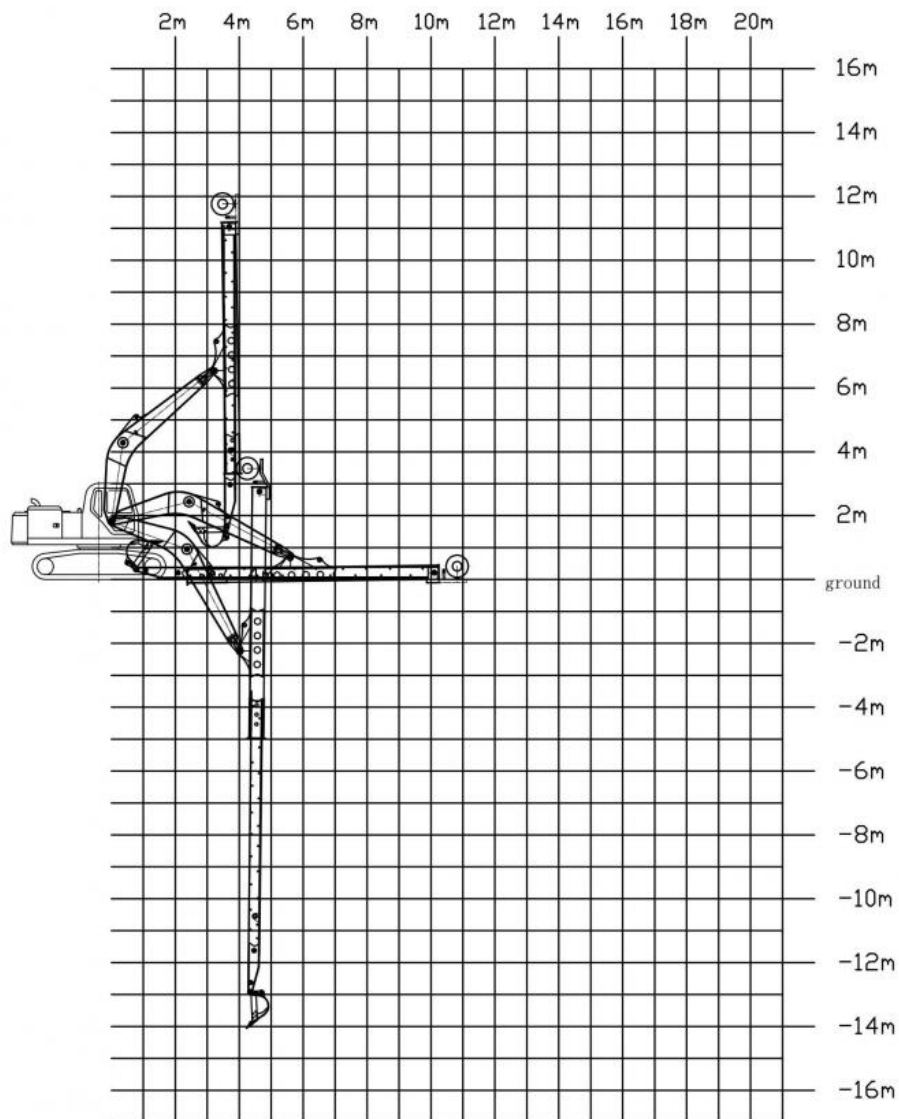
More specification of one set of telescopic boom long reach boom long arm:

Excavator model(ton)	Bucket capacity(cb m)	Bucket cylinder(T)	Digging Depth(m)
20-27T	0.4-0.6	20T	14
20-27T	0.8	30T	14
30-36T	1	35T	14
30-36T	0.8	30T	14
30-36T	1	35T	15

Welcome to send your excavator model to us, suitable length and model drawing will be sent soon.

Model drawing of one set of excavator telescopic boom sliding arm:
* 14m telescopic boom for excavator for 20ton excavator is as follow:

PC 200--14m two-section telescopic arm



The model drawing will be sent as soon as possible.

Features of one set of excavator long reach stick boom and arm:







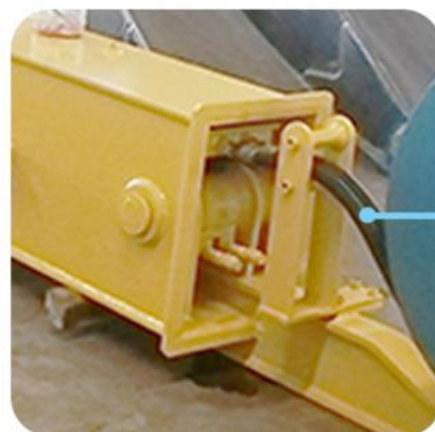
Enlarged spring piece



High Effective



Not prone to failure



**Four-layer steel wire
high pressure hose**



More durable



The front part is curved



**Enlarge the digging
force**



**Digging effective
is increased.**



The whole plate is inserted



Durable
Longer life-span



Add two blocks
on cylinder head



Reduce vibration



Double oil seal
design



Avoid oil leakage

High-Quality Long Cylinder for Excavator Long Reach Telescopic Boom:

The long cylinder of our telescopic boom is of premium quality, featuring a double-cylinder seal that minimizes the risk of oil leakage and extends its service life.

Reinforced Design for High-Stress Areas: The design has been enhanced at critical stress points, ensuring that the steel tube's lifespan is significantly longer—up to twice that of competing brands. This results in improved durability and resistance to cracking.

Optimized Front Section for Increased Digging Force: The front section of the excavator's long reach boom is curved, which significantly enhances digging power. This design improvement boosts the working efficiency of the telescopic arm, allowing for more effective and powerful excavating operations.

Why chose Kaiping Zhonghe Machinery's excavator telescopic boom arm:



The reel adopts enlarged spring piece

VS



common type



* Better Hose Reel on one set of telescopic arm for excavator:



Multi-layer reinforcement of stress-bearing parts



without reinformant

Feedback of one set of excavator telescopic boom arm:

Feedback from Clients



from Jonson:
the telescopic boom is suitable for
digging caisson. excellent
performance.



from Ryon:
deeper digging depth. work
effectively. nice service



from Ton:
Very excellent telescopic boom.
on my excavator suitably. very
good job



from Cris:
safe and balanced. premium
excavator boom. perfect

WIA: +86 13822325403

Contact details of our sales manager:



Sales Manager

Manufacturer of Excavator Arm and Boom

Whatsapp: +86 13822325403

Email: aria@excavatorboomarm.com
13822325403@163.com

Web: www.excavatorlongarm.com



Kaiping Zhonghe Machinery is a big Manufacturer of Excavator telescopic arm

Welcome to contact for a big discount!

Whatsapp: wa.me/+8613822325403

Email: aria@excavatorboomarm.com
13822325403@163.com

Website link: www.excavatorlongarm.com



Jiangmen Kaiping Zhonghe Machinery Manufacturing Co., Ltd



+86 13822325403



aria@excavatorboomarm.com



excavatorlongarm.com

9 Huancui West Road, Cuishanhu New Area, Kaiping City, Guangdong Province, China