



10000mm Q355B Hydraulic Excavator Telescopic Boom

Our Product Introduction

for more products please visit us on excavatorlongarm.com

Basic Information

- Place of Origin: Guangdong Province, China
- Brand Name: Kaiping Zhonghe Machinery Manufacturing Co. Ltd
- Certification: CE, patent, ISO
- Model Number: HB0016
- Minimum Order Quantity: 1 set / piece
- Price: USD 139.00-USD8999.00
- Packaging Details: bubble / wooden cases / others as you request
- Delivery Time: 5-22/works
- Payment Terms: T/T, L/C
- Supply Ability: 5 sets per week



Product Specification

- ODM/ OEM: Available
- Long Reach: 10M 12M 16M
- After-sales Service: Yes, 24Hours Available
- Material: Q355B, Q690D, Premium Material
- Manufacturer: Yes
- Warranty: 6 Months For The Arm, 3 Months For The Bucket
- Color: Customized Red Yellow Blue Orange
- Cylinders: High Quality Cylinders
- Highlight: 10000mm excavator telescopic boom, Q355B excavator telescopic boom, Hydraulic excavator telescopic boom



More Images



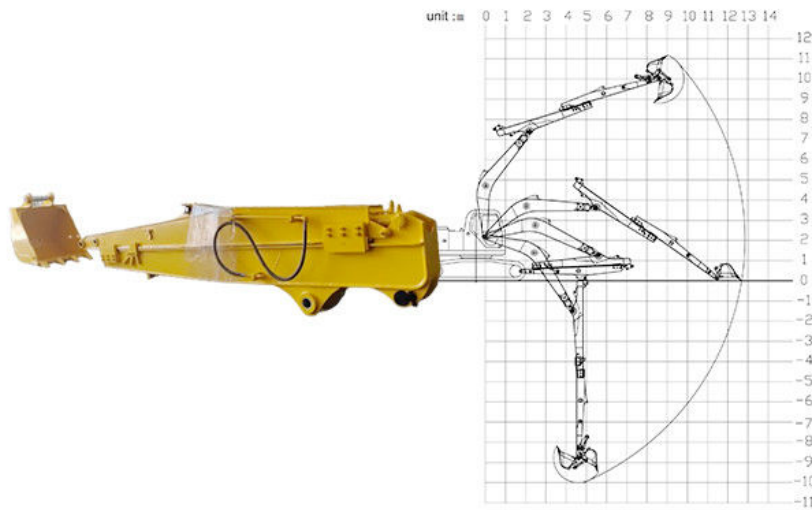
Product Description

Excavator Telescopic Boom Telescopic Arm Use High Quality Cylinder Material

Introduction of one set of Kaiping Zhonghe Machinery's Excavator Telescopic Boom Telescopic Arm :

The excavator sliding arm is an innovative attachment designed to enhance the versatility and efficiency of excavators in various construction tasks. This advanced mechanism allows for smooth lateral movement, enabling operators to reach challenging areas and execute precise operations with ease. By providing increased adaptability, the sliding arm significantly improves productivity, making it ideal for tasks such as trenching, grading, and material handling. Engineered with durable materials and advanced hydraulic systems, the excavator sliding arm ensures reliability and performance, making it an essential tool for professionals seeking to maximize their equipment's capabilities.

Specifications of one set of excavator telescopic boom telescopic arm with bucket:



Excavator Model(ton)	Bucket Capacity(cbm)	Digging Depth(m)
3-4T	0.1	4
6-8T	0.2	6
10-12T	0.35	8
20-27T	0.5-0.6	10
20-27T	0.45	12
30-36T	1.2	10
30-36T	1	12
30-36T	0.6	12

More pictures of Kaiping Zhonghe Machinery's excavator teledipper:

Suitable excavators for excavator teledipper: Sany Hitachi Komatsu Kobelco Zoomlion etc



Production details of one set of hydraulic telescoping excavator boom:



Beveling Machine
Every board will be beveled before being welded which enhances the weld bead

Panel is cut by CNC plasma machine with less deformation





Large floor-standing
double-sided boring
machine
Higher accuracy

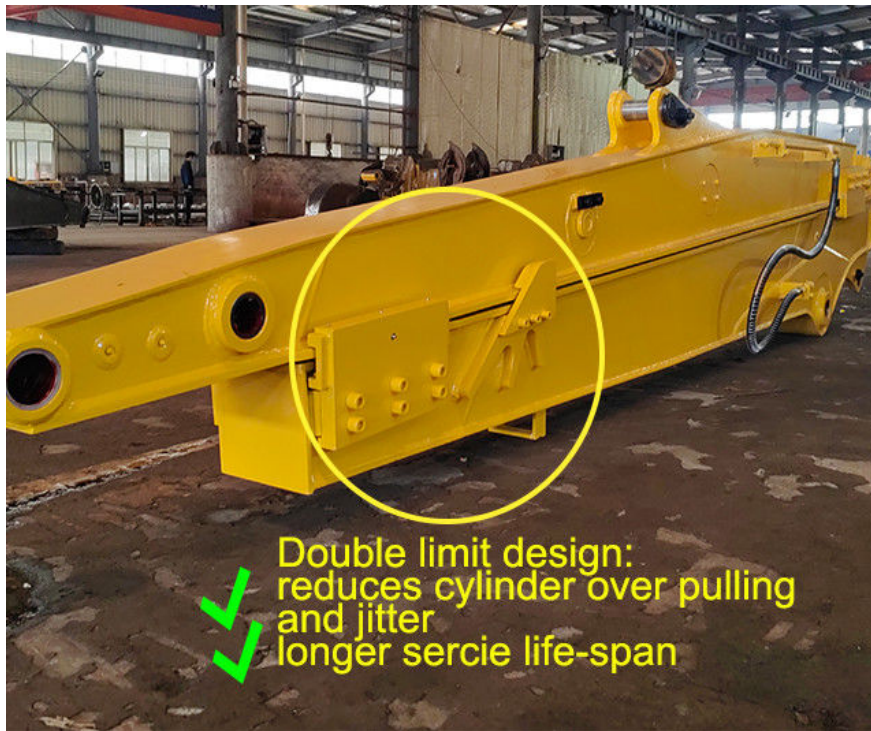
Some excellent design of Kaiping Zhonghe Machinery's excavator dipper arm which excel others:



its easy for the
pipeline jumps
up, causing
damage to the
pipeline.



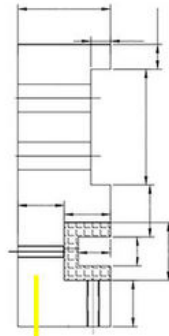
Welded on, less
vibration and
longer service
life.



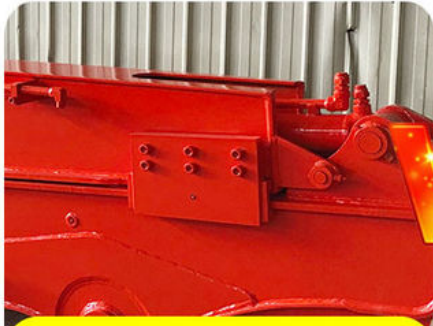
Double limit design
reduces cylinder over pulling
and jitter



Huge vibration
cylinder easy to fail



Thicken
Reduce cracking and failure rate



Longer service life-span



Easy to fail and crack



Feedback of Kaiping Zhonghe Machinery's excavator long reach telescopic boom:

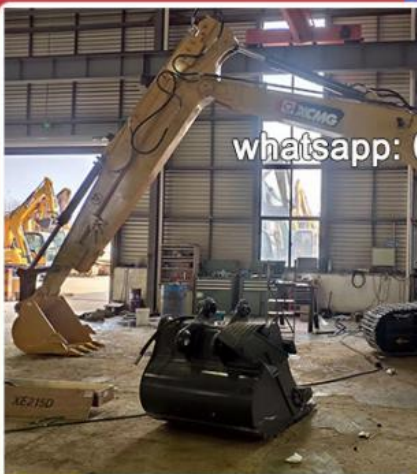
Feedback from Clients



from Tonny:
Very excellent telescopic boom.
on my pc 200 excavator suitably.



from Jason:
cool, the telescopic boom
works effectively. suitable for
digging.



from David:
very nice service.
The boom works very good.
safe and balanced operation



from Kevin:
suitable for digging caisson.
save energy.

whatsapp: 0086 13822325403



Sales Manager

Manufacturer of Excavator Arm and Boom

Whatsapp: +86 13822325403

Email: aria@excavatorboomarm.com
13822325403@163.com

Web: www.excavatorlongarm.com



Jiangmen Kaiping Zhonghe Machinery Manufacturing Co., Ltd

+86 13822325403

aria@excavatorboomarm.com

excavatorlongarm.com

