



Q690D Cat 395 Excavator Pile Driver Attachment for Excavators

Our Product Introduction

for more products please visit us on excavatorlongarm.com

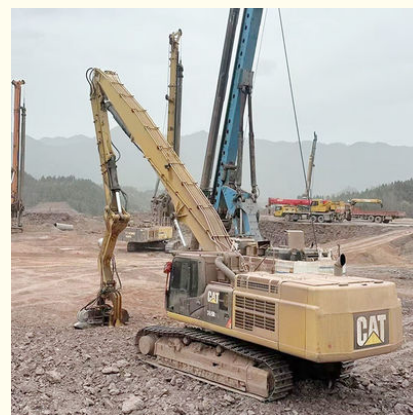
Basic Information

- Place of Origin: Guangdong Province, China
- Brand Name: Kaiping Zhonghe Machinery Manufacturing Co. Ltd
- Certification: CE, patent, ISO
- Model Number: PB001
- Minimum Order Quantity: 1 set / piece
- Price: USD 199.00-USD11799.00
- Packaging Details: bubble / wooden cases / others as you request
- Delivery Time: 5-25/works
- Payment Terms: T/T, L/C
- Supply Ability: 5 sets per week

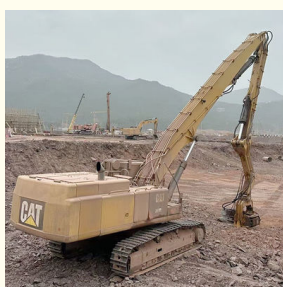
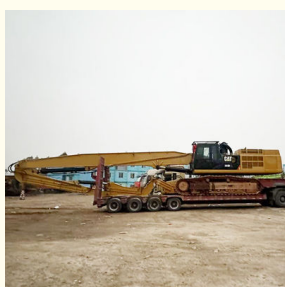


Product Specification

- After Sales Service: Available
- Material: Shaogang Q355B, Better Welding Performance
- Welding Wire: Jinqiao Welding Wire, Better Welding Wire
- Pipeline: Seamless Pipeline, Not Easy Cracking
- Precision: High Precision
- Connectors: Thickened Connectors, Can Bear Huge Stress
- Warranty: 6 Months For Pile Arm Pile Boom
- Quality: Premium Quality Wear Resistant



More Images



Product Description

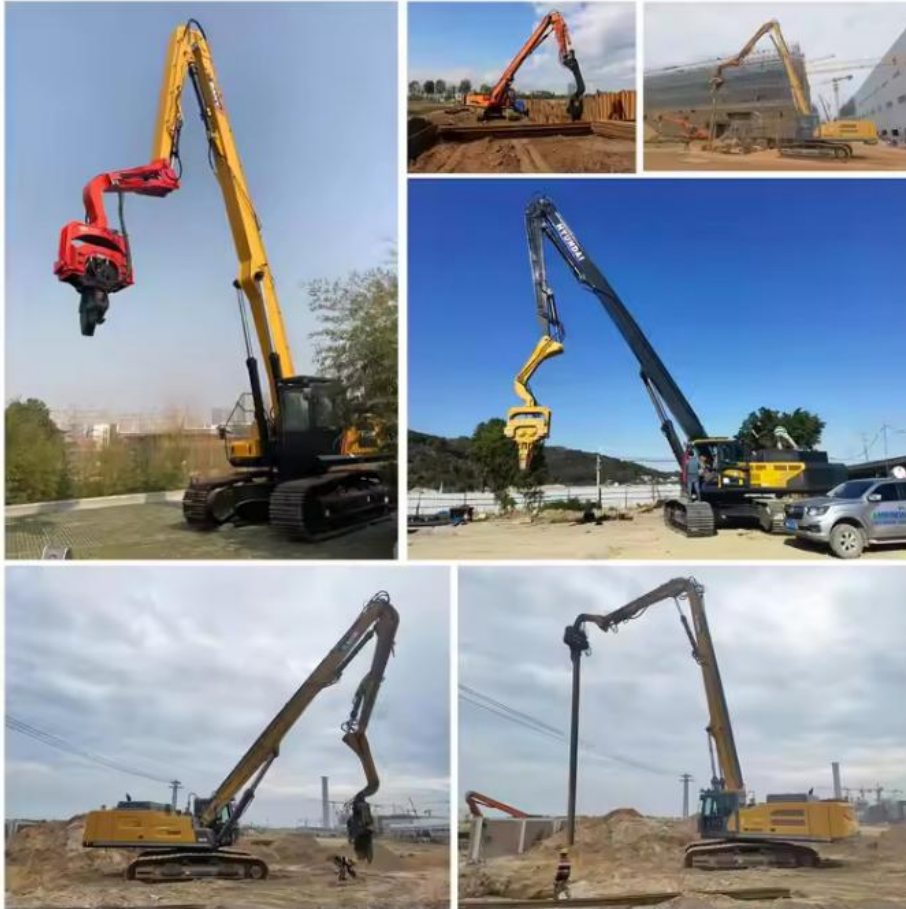
Q690D Excavator Pile Driving Arm Hydraulic Pile Driver Attachment for Excavator

Suitable excavators: Sany, Hitachi, Komatsu, Zoomlion, etc

Introduction of one set of hydraulic pile driver attachment for excavator:

The hydraulic pile driver attachment for excavators is a specialized tool designed to enhance the functionality of standard excavators by enabling them to drive piles into the ground efficiently. This attachment utilizes hydraulic power to deliver controlled, high-impact blows to various types of piles, facilitating their installation in a range of soil conditions. With its ability to operate in confined spaces, the hydraulic pile driver is ideal for construction projects requiring deep foundations, such as buildings, bridges, and marine structures. The design allows for precise alignment and depth control, ensuring that piles are driven accurately for optimal structural support. By equipping excavators with this attachment, contractors can significantly improve productivity and versatility on job sites, making it an essential tool for modern construction and civil engineering projects.

Key words: pile driver attachment for excavators, pile driver excavator, excavator pile driver, pile driver for excavator, hydraulic pile driver attachment for excavator, excavator pile driving arm etc





**Specifications of one set of excavator pile driving armare as follow:
Customized service is available.**

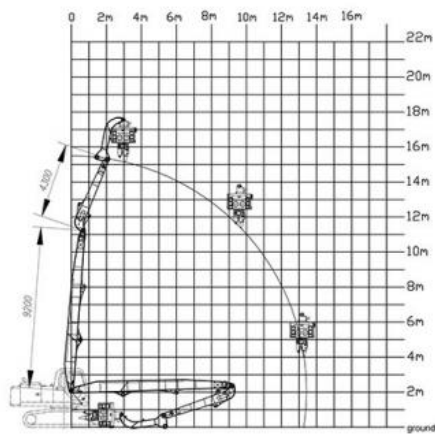
Category	Excavator Model(ton)	Section(m)	Total Length(m)
Boom	20-24T	8	11-12
Arm		3	
Boom	25-28T	8.5	12.5-13
Arm		3.5	
Boom	30-38T	9.7	13.5
Arm		3.8	
Boom	36-39T	10.5	15
Arm		4.5	
Boom	40-47	9.8	13-14.2
Arm		4	

Boom	40-50	11	15-15.8
Arm		4.8	
Boom	45-52	11.5	16.5-16.8
Arm		5.3	
Boom	47-52	12.2	18-19
Arm		6	
Boom	49-52	14	21-22
Arm		7	
Boom	60-70	14	21-22
Arm		7	
Boom	65-85	15.2	24m
Arm		8.8	

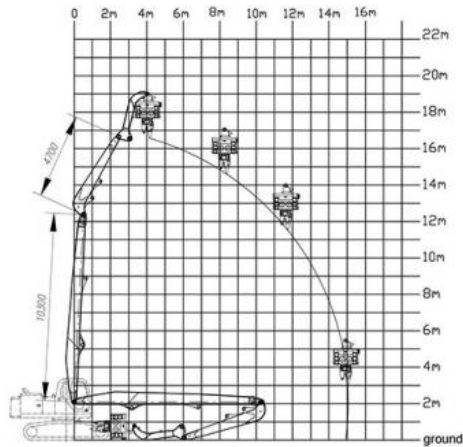
Welcome to send your excavator model to us.

Suitable length of pile driver for excavator and model drawing will be sent soon.

13.5 Pile Arm Pile Boom



15m Pile Arm Pile Boom



More details of the excavator pile hammer:



PRODUCT DETAILS



Hydraulic Motor

Uses the American Parker motor. Low Fail Rate
Longer Service Life-span

Bearings

SKF's VA405 bearings
Can bear huge stress



Clamping Cylinder

Adopts the largest diameter
among the same type,
which will provide better
clamping force.

Clip

Made of one-piece precision
casting



Production Details of one set of excavator pile driving arm

* 100% full tests * professional * experienced



Large floor-standing
double-sided boring
machine
Higher accuracy

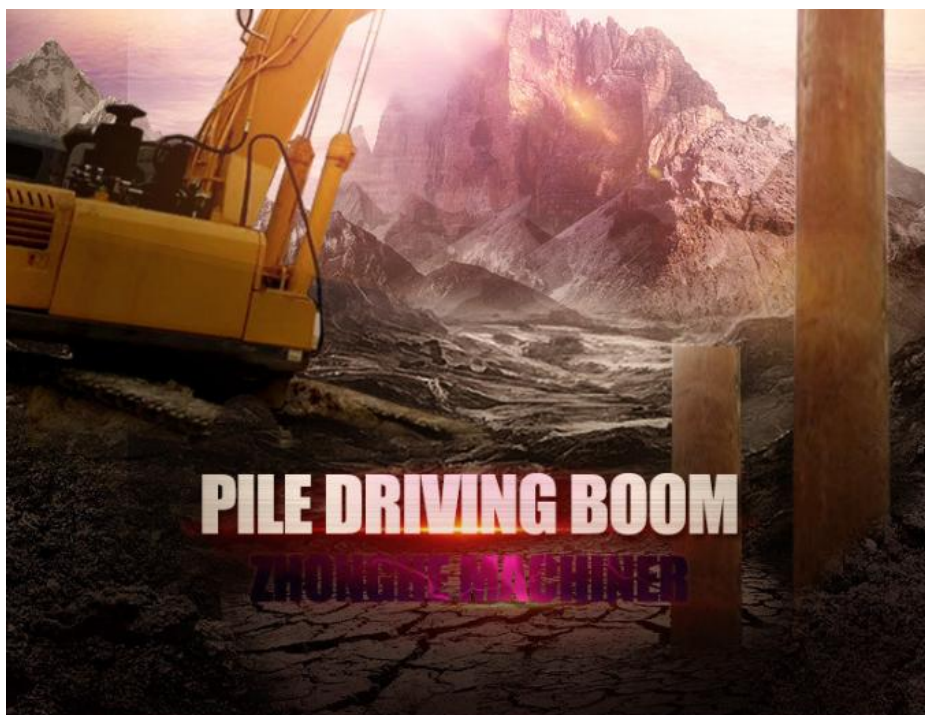
Panel is cut by CNC
plasma machine with
less deformation



Beveling Machine
Every board will be
beveled before being
welded which enhances
the weld bead

Some details of one set of excavator pile driving arm:





PILE DRIVING BOOM

ZHONGXI MACHINERY



Overall Quality

- * Q355B Material
- * Centralized lubrication system

Boom Base

- * Graphite alloy copper sleeve
- * The boom seat sleeve adopts all in one molding process



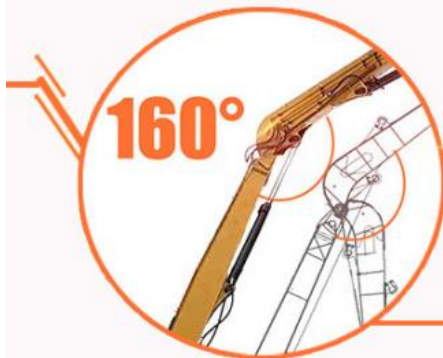
Precision Pipe

- * Seamless precision steel pipe
- * Hydraulic pipelines section design, convenient for later maintenance

Welding process



- *Four layers five passes welding
- *High-quality Ningbo connectors



Open Angle

- *The angle between boom and arm can reach 160°
- *Comparing with the same length pile driving arm, ours can pile higher.

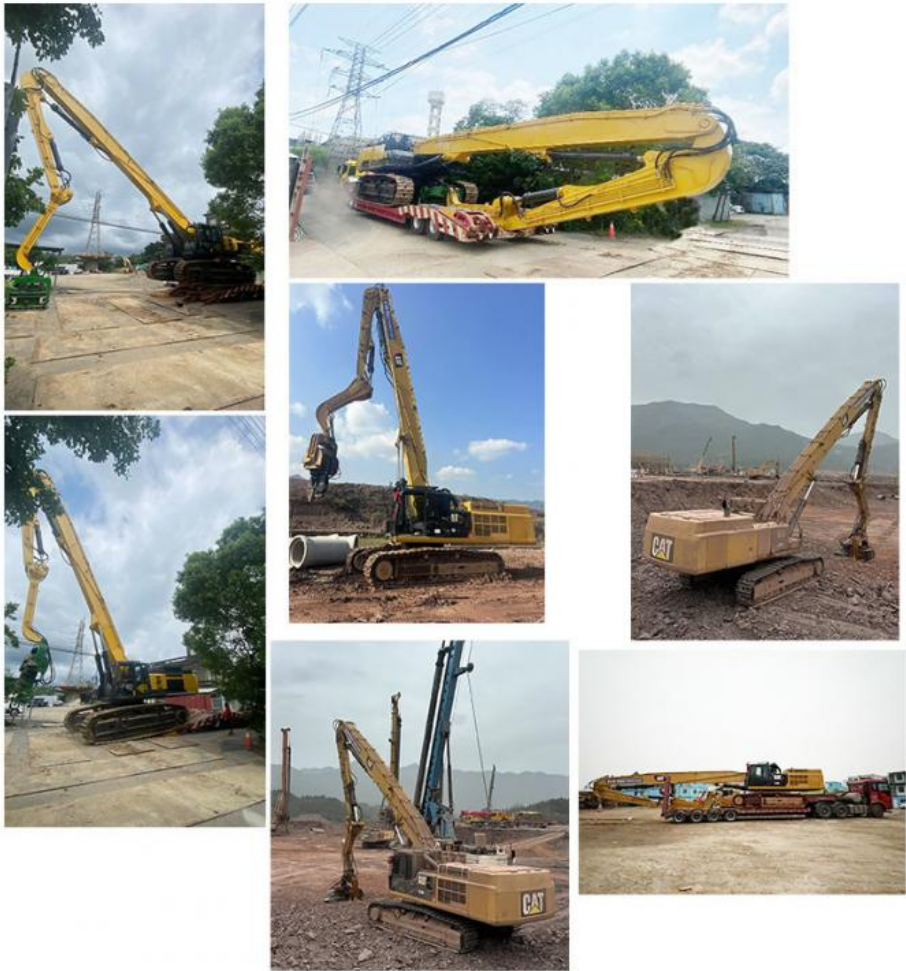
Certifications:

4. Certifications



Feedback from clients of excavator pile driving arm / excavator pile driver:





Top Picks of Kaiping Zhonghe Machinery's Arm and Boom:
Key word of excavator pile driving arm:

excavator mounted pile driver
hydraulic mini excavator pile driver
hydraulic pile driver attachment for excavator
solar pile driver for excavator



Sliding Arm



Long Arm Long Boom





Contact Details of Sales Manager---Aria:

Kaiping Zhonghe Machinery is a big Manufacturer of Excavator Arm and Boom

Key word: long reach boom excavator, pile arm pile boom, demolition arm, shorten arm/ tunnel arm, rock arm rock boom, telescopic arm, etc

Welcome to contact for a big discount!

Whatsapp: wa.me/+8613822325403

Email: aria@excavatorboomarm.com
13822325403@163.com

Website link: www.excavatorlongarm.com



Jiangmen Kaiping Zhonghe Machinery Manufacturing Co., Ltd



+86 13822325403



aria@excavatorboomarm.com



excavatorlongarm.com

9 Huancui West Road, Cuishanhu New Area, Kaiping City, Guangdong Province, China