



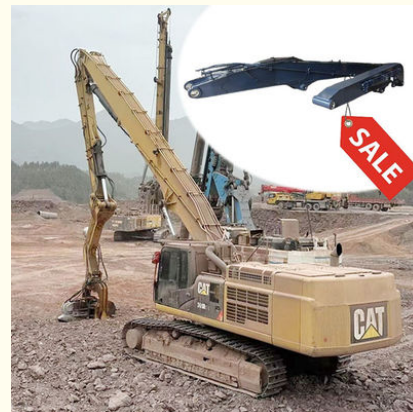
## Cat 395 Excavator Pile Driver With Excavator Pile Hammer Q690D

Our Product Introduction

for more products please visit us on excavatorlongarm.com

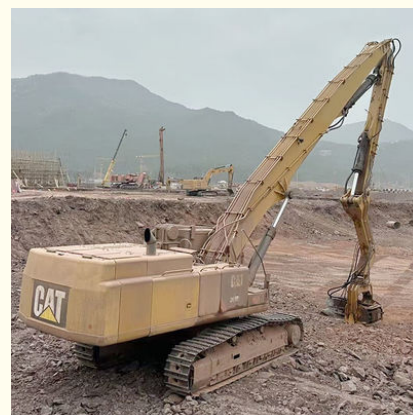
### Basic Information

- Place of Origin: Guangdong Province, China
- Brand Name: Kaiping Zhonghe Machinery Manufacturing Co. Ltd
- Certification: CE, patent, ISO
- Model Number: 20M 22M
- Minimum Order Quantity: 1 set / piece
- Price: USD 199.00-USD10799.00
- Packaging Details: bubble / wooden cases / others as you request
- Delivery Time: 5-25/works
- Payment Terms: T/T, L/C
- Supply Ability: 5 sets per week



### Product Specification

- Welding Wire: Jinqiao Welding Wire, Better Welding Wire
- Warranty: 6 Months For Pile Arm Pile Boom
- Precision: High Precision
- After Sales Service: Available
- Material: Shaogang Q355B, Better Welding Performance
- Pipeline: Seamless Pipeline, Not Easy Cracking
- Connectors: Thicken Connectors, Can Bear Huge Stress
- Quality: Premium
- Highlight: **Pile Driver Excavator Pile Hammer, Q690D Excavator Pile Hammer, Cat 395 Excavator Pile Driver**



### More Images



## Product Description

### 20M Excavator Pile Driving Arm Hydraulic Pile Driver Attachment for Excavator

#### Introduction of one set of excavator pile driving arm:

The working environment of an excavator fitted with a pile driving arm is typically found on construction sites where deep foundations are essential, such as for commercial buildings, bridges, and structures along waterfronts. This configuration allows the excavator to effectively drive piles into various soil conditions, including clay, sand, and gravel, ensuring vital support for structural stability. The pile driving arm offers precise control and significant impact force, making it effective in both urban settings and remote areas. Operators need to be aware of site conditions, such as the proximity to existing structures, underground utilities, and potential hazards like overhead power lines. Clear communication among team members and strict adherence to safety protocols are crucial for maintaining a safe and efficient work environment, especially in locations with limited access or difficult terrain.



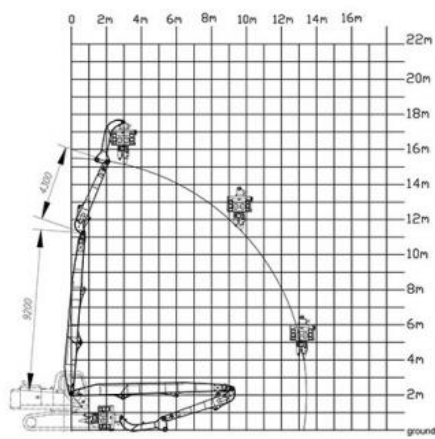
Specifications of one set of excavator pile driving arm are as follow:  
Customized service is available.

Category	Excavator Model(ton)	Section(m)	Total Length(m)
Boom	20-24T	8	11-12
Arm		3	
Boom	25-28T	8.5	12.5-13
Arm		3.5	
Boom	30-38T	9.7	13.5
Arm		3.8	
Boom	36-39T	10.5	15
Arm		4.5	
Boom	40-47	9.8	13-14.2
Arm		4	
Boom	40-50	11	15-15.8
Arm		4.8	
Boom	45-52	11.5	16.5-16.8
Arm		5.3	
Boom	47-52	12.2	18-19
Arm		6	
Boom	49-52	14	21-22
Arm		7	
Boom	60-70	14	21-22
Arm		7	

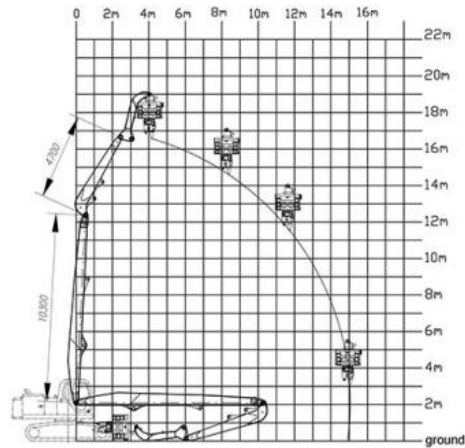
Boom	65-85	15.2	24m
Arm		8.8	

Welcome to send your excavator model to us. Suitable length of pile driver for excavator and model drawing will be sent soon.

13.5 Pile Arm Pile Boom



15m Pile Arm Pile Boom





## PRODUCT DETAILS



### Hydraulic Motor

Uses the American Parker motor. Low Fail Rate  
Longer Service Life-span



### Bearings

SKF's VA405 bearings  
Can bear huge stress



### Clamping Cylinder

Adopts the largest diameter  
among the same type,  
which will provide better  
clamping force.

### Clip

Made of one-piece precision  
casting



Production Details of one set of pile driver for excavator



Large floor-standing  
double-sided boring  
machine  
Higher accuracy

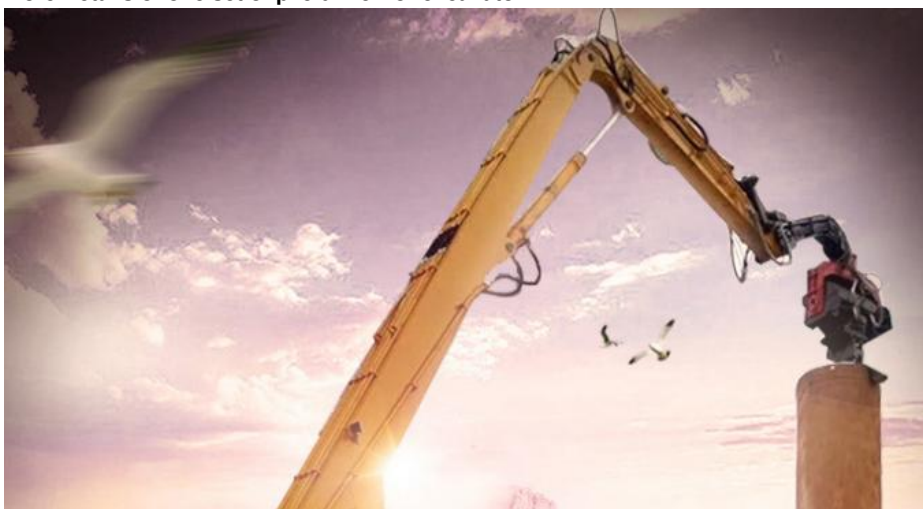
Panel is cut by CNC  
plasma machine with  
less deformation



Beveling Machine  
Every board will be  
beveled before being  
welded which enhances  
the weld bead

\* High precision \*High quality \*Professional \*Experienced

**More Details of one set of pile driver for excavator**







## Overall Quality

- \* Q355B Material
- \* Centralized lubrication system

## Boom Base

- \* Graphite alloy copper sleeve
- \* The boom seat sleeve adopts all in one molding process



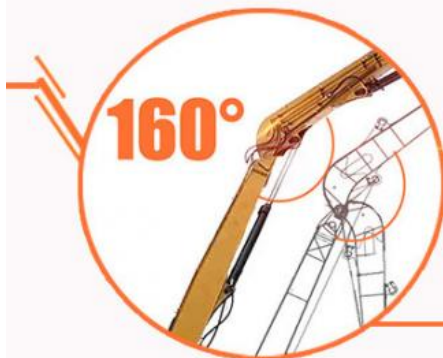
## Precision Pipe

- \* Seamless precision steel pipe
- \* Hydraulic pipelines section design, convenient for later maintenance

## Welding process



- \*Four layers five passes welding
- \*High-quality Ningbo connectors



## Open Angle

- \*The angle between boom and arm can reach 160°
- \*Comparing with the same length pile driving arm, ours can pile higher.

### Certifications:

- \* Professional
- \*High Precision
- \*Experienced

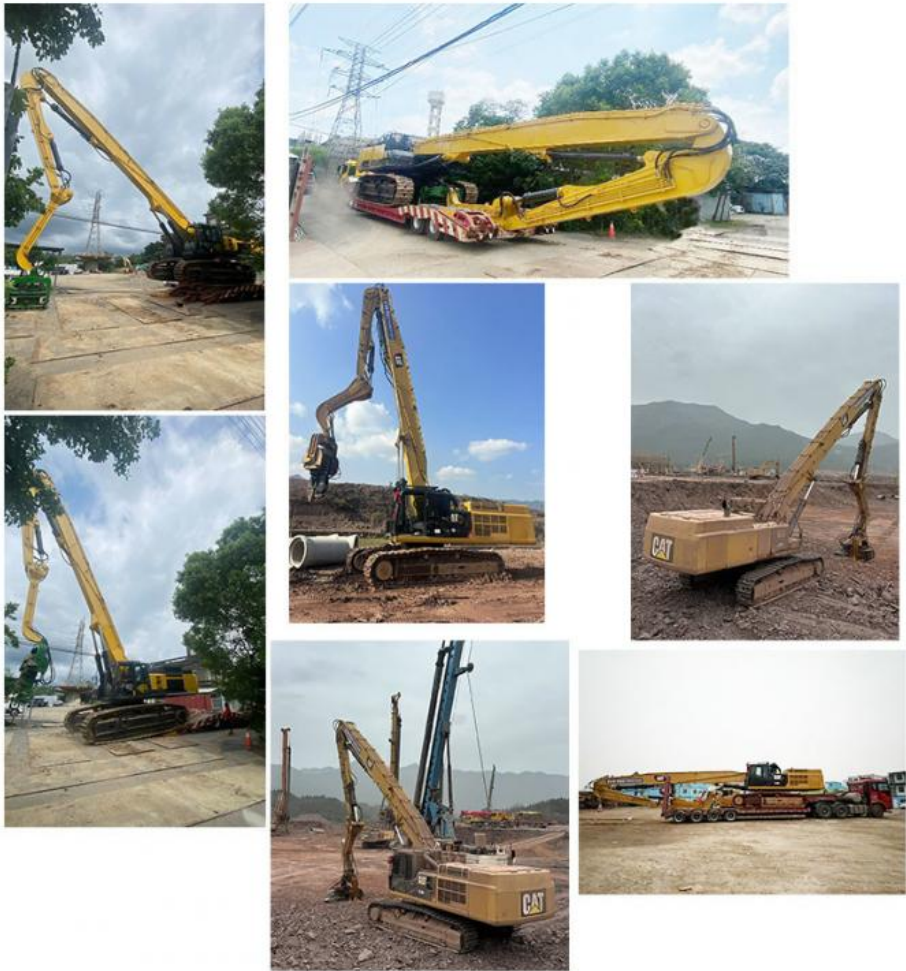
## 4. Certifications



Feedback from clients of pile driver for excavator:







#### Top Picks of Kaiping Zhonghe Machinery's Arms and Booms:

##### Key word:

pile driver attachment for excavators
pile driver excavator
excavator pile driver
pile driver for excavator
excavator pile hammer



Sliding Arm





## Long Arm Long Boom



## Tunnel Arm / Shorten Arm



**Contact Details of Sales Manager:**

Kaiping Zhonghe Machinery is a big Manufacturer of Excavator Arms and Booms

Key word: long reach boom excavator, pile arm pile boom, demolition arm, shorten arm/ tunnel arm, rock arm rock boom, telescopic arm, etc

Welcome to contact for a big discount!

Whatsapp: [wa.me/+8613822325403](https://wa.me/+8613822325403)

Email: [aria@excavatorboomarm.com](mailto:aria@excavatorboomarm.com)  
13822325403@163.com

Website link: [www.excavatorlongarm.com](http://www.excavatorlongarm.com)



**Jiangmen Kaiping Zhonghe Machinery Manufacturing Co., Ltd**



+86 13822325403



[aria@excavatorlongarm.com](mailto:aria@excavatorlongarm.com)



[excavatorlongarm.com](http://excavatorlongarm.com)

9 Huancui West Road, Cuishanhu New Area, Kaiping City, Guangdong Province, China