



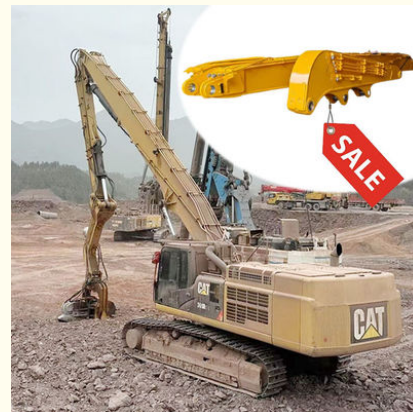
20M Long Reach Boom Excavator Pile Driver Q355B High Strength

Our Product Introduction

for more products please visit us on excavatorlongarm.com

Basic Information

- Place of Origin: China
- Brand Name: Kaiping Zhonghe Machinery Manufacturing Co. Ltd
- Certification: CE, patent, ISO
- Model Number: PB009
- Minimum Order Quantity: 1 set / piece
- Price: USD 199.00-USD11999.00
- Packaging Details: bubble / wooden cases
- Delivery Time: 5-25/works
- Payment Terms: T/T, L/C or others as you request
- Supply Ability: 5 sets per week



Product Specification

- Material: Shaogang Q355B, Q690D
- Warranty: 6 Months For The Arm And Boom
- Pipeline: Seamless Pipeline, Not Easy Fail
- Quality: Premium
- Precision: High Precision
- Connectors: Thickened Connectors, Not Easy Oil Leakage
- Welding Wire: Jinqiao Welding Wire, Better Welding
- After Sales Service: Available
- Highlight: **Q355B Pile Driver Excavator,
20M Pile Driver Excavator,
High Strength Pile Driver Excavator**



More Images



Product Description

20M Excavator Pile Driving Arm Long Reach Boom Excavator

Working environment of one set of long reach boom excavator:

The working environment of an excavator equipped with a pile driving arm is often characterized by its presence on construction sites, particularly where deep foundations are required, such as in commercial buildings, bridges, and waterfront structures. This setup allows the excavator to efficiently drive piles into a variety of soil types, including clay, sand, and gravel, providing crucial support for structural integrity. The pile driving arm enables precise control and powerful impact, making it suitable for both urban and remote locations. Operators must be mindful of site conditions, including proximity to nearby structures, underground utilities, and potential hazards like overhead power lines. Effective communication among team members and adherence to safety protocols are essential to ensure a safe and efficient working environment, particularly in areas with restricted access or challenging terrain.



Steel sheet pile



Photovoltaic pile



Casing



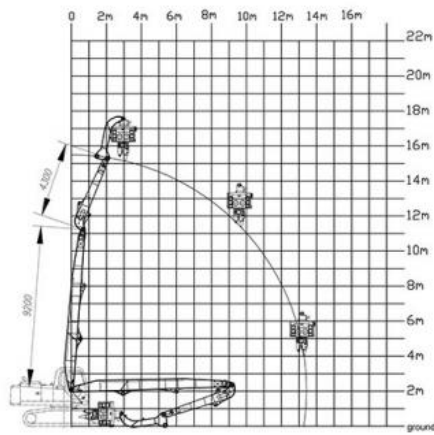
U pile

Specifications of one set of excavator pile driving arm:

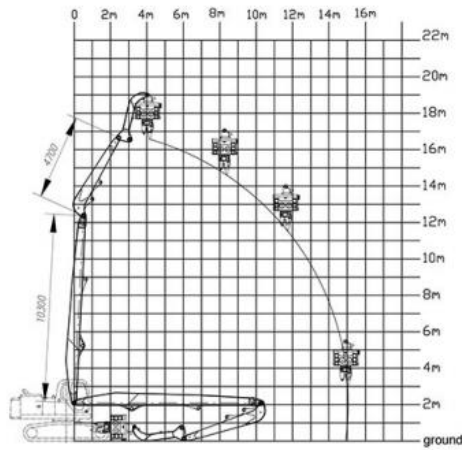
Category	Excavator Model(ton)	Section(m)	Total Length(m)
Boom	20-24T	8	11-12
Arm		3	
Boom	25-28T	8.5	12.5-13
Arm		3.5	
Boom	30-38T	9.7	13.5
Arm		3.8	
Boom	36-39T	10.5	15
Arm		4.5	
Boom	40-47	9.8	13-14.2
Arm		4	
Boom	40-50	11	15-15.8
Arm		4.8	
Boom	45-52	11.5	16.5-16.8
Arm		5.3	
Boom	47-52	12.2	18-19
Arm		6	
Boom	49-52	14	21-22
Arm		7	
Boom	60-70	14	21-22
Arm		7	
Boom	65-85	15.2	24m
Arm		8.8	

Welcome to send your excavator model to us. Suitable length and model drawing will be sent soon.

13.5 Pile Arm Pile Boom



15m Pile Arm Pile Boom



Production Details of one set of excavator pile driving arm:

* Professional * Full Experienced * Full Tests * High Quality



Large floor-standing
double-sided boring
machine
Higher accuracy

Panel is cut by CNC
plasma machine with
less deformation



Beveling Machine
Every board will be
beveled before being
welded which enhances
the weld bead



Overall Quality

- * Q355B Material
- * Centralized lubrication system

Boom Base

- * Graphite alloy copper sleeve
- * The boom seat sleeve adopts all in one molding process





Precision Pipe

- * Seamless precision steel pipe
- * Hydraulic pipelines section design, convenient for later maintenance

Welding process

- * Four layers five passes welding
- * High-quality Ningbo connectors





Open Angle

- * The angle between boom and arm can reach 160°
- * Comparing with the same length pile driving arm, ours can pile higher.

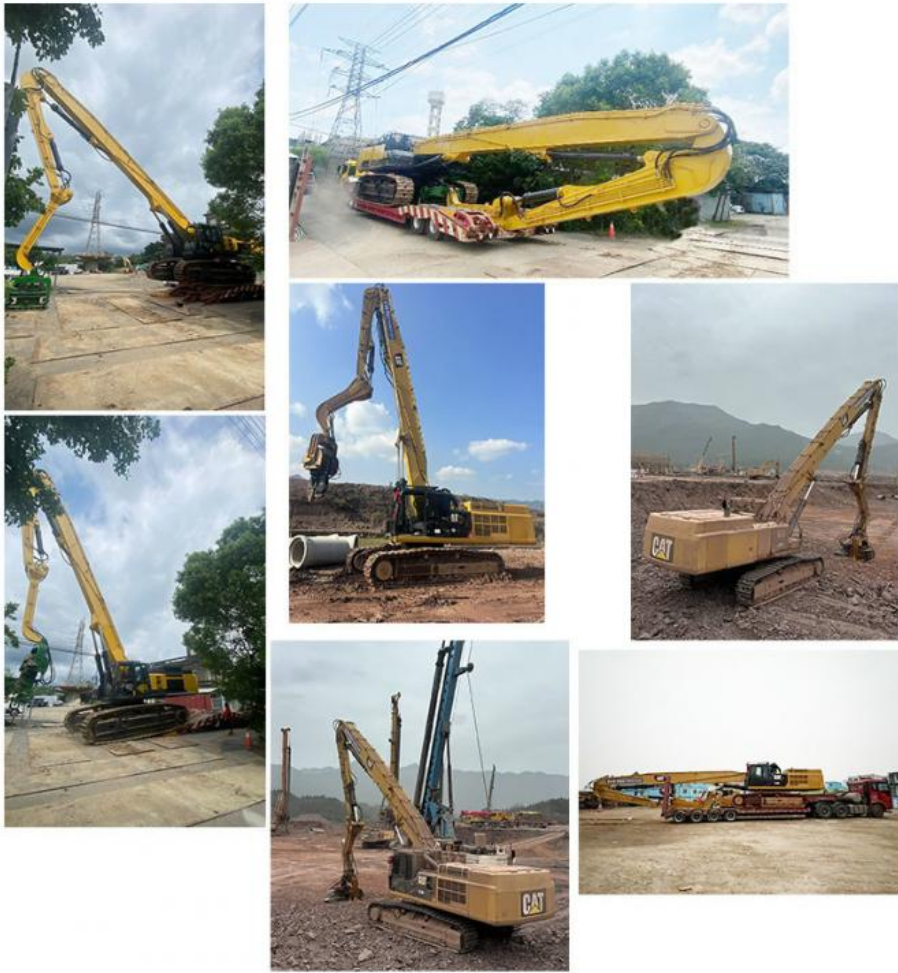
Certifications we get:

4. Certifications



Feedback from clients of pile driver for excavator:





Top Picks of Zhonghe Machinery's excavator long reach arm:



Sliding Arm



Long Arm Long Boom





Contact Details:

Kaiping Zhonghe Machinery is a big Manufacturer of Excavator Arms and Booms

Key word: long reach boom excavator, pile arm pile boom, demolition arm, shorten arm/ tunnel arm, rock arm rock boom, telescopic arm, etc

Welcome to contact for a big discount!

Whatsapp: wa.me/+8613822325403

Email: aria@excavatorboomarm.com

13822325403@163.com

Website link: www.excavatorlongarm.com

manufacturer excavatorlongarm longreachboomexcavator excavator excavation



Jiangmen Kaiping Zhonghe Machinery Manufacturing Co., Ltd



+86 13822325403



aria@excavatorlongarm.com



excavatorlongarm.com

9 Huancui West Road, Cuishanhu New Area, Kaiping City, Guangdong Province, China