



25m 30m 32m Telescopic Dipper Excavator Telescopic Arm for Cat 390

Our Product Introduction

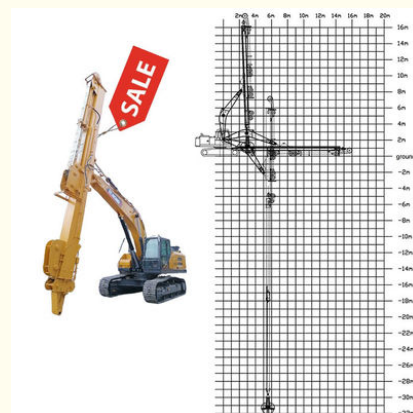
Basic Information

- Place of Origin: China, Guangdong Province
- Brand Name: Kaiping Zhonghe Machinery Manufacturing Co. Ltd
- Certification: CE, patent, ISO
- Model Number: SSB013
- Minimum Order Quantity: 1 set / piece
- Price: USD 129.00-USD12999.00
- Packaging Details: bubble / wooden cases/ others as you request
- Delivery Time: 5-20/works
- Payment Terms: T/T, L/C
- Supply Ability: 5 sets per week



Product Specification

- Bucket: Clamshell Bucket / Grapple / Grab
- Material: BS900E, Lighter And Stronger
- Efficiency: High Efficiency, High Effective
- Maintenance: Easy Maintenance, Add Lubricant
- Cylinder: High Quality Cylinders, Famous Brand Cylinders
- Digging Depth(m): 18m 20m 25m 30m 32m



More Images



for more products please visit us on excavatorlongarm.com

Product Description

Hydraulic Telescoping Excavator Boom with Bucket for Digging Construction

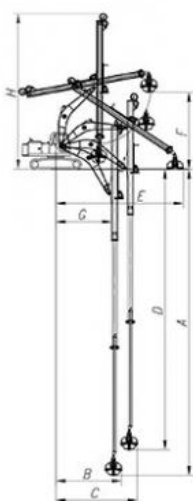
Suitable excavators for clamshell telescopic arm excavator : Sany, hitachi, komatsu, zoomlion, kobelco, etc

Specification detail of one set of clamshell telescopic arm excavator:

Digging Depth(m)	Excavator Model(ton)	Clamshell Bucket(cbm)
12	20-25T	0.6
14		0.4
16		0.4
18		0.4
20	26-28	0.6
20-22m	30-33T	1.5cbm
	35-38T	
	30-33T	
	35-38T	
25m	35-38T	2.2cbm
	40-50T	
26-30m	36-50T	1.5cbm
		1.5cbm
		2cbm
		2cbm
		2.2cbm
		2.2cbm
31-32m	40-50T	2.2cbm
		2.5cbm

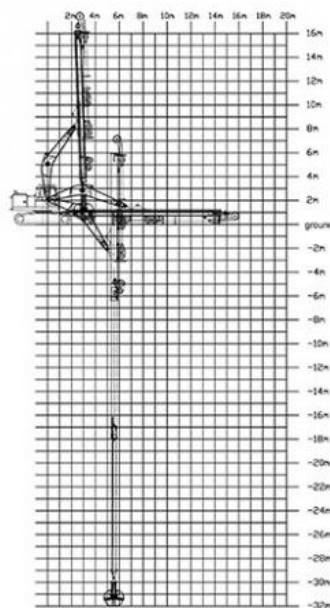
Welcome to send your excavator model to us for double check. Suitable length and model drawing will be sent soon.

16m Telescopic Arm



16M- Telescopic Boom	
A. Maximum vertical digging depth	16000mm
B. Maximum vertical depth digging radius	7095mm
C. Maximum vertical excavation working radius	8801mm
D. Maximum vertical digging depth	13340mm
E. Maximum vertical excavation working radius	13586mm
F. Maximum unloading height	8044mm
G. Minimum turning radius	6150mm
H. The minimum turning radius is the height of the whole machine	8087mm

32m Telescopic Arm



Suitable works: digging house foundation, foundation pit, deeper long reach, digging sand, soil, silt, rock and dirt, etc

Production of one set of hydraulic telescoping excavator boom:

* High Precision *Professional * Experienced *Full Test



The clamshell bucket has **two cylinders**---less failure rate

Material we use--Shaogang Q355B--with better welding performance

Premium welding
Not easy cracking
Longer life-span

Production Details of Three-section telescopic arm

Premium Material---**BS900E** lighter and stronger

The materials: steel, cylinders, etc are all stored well and keep away from moisture and corrosion



Cleaning and dredging



Telescopic arm test



Bridge construction projects



Deep pit work



For Deep foundation pit construction project



For unloading materials



For Large-scale earthworks



More details of one set of hydraulic telescoping excavator boom:

Premium Wire Rope

Xianyang Baoshi Rotary wire rope--can bear larger tension and impact



Multi-strand Wire Rope



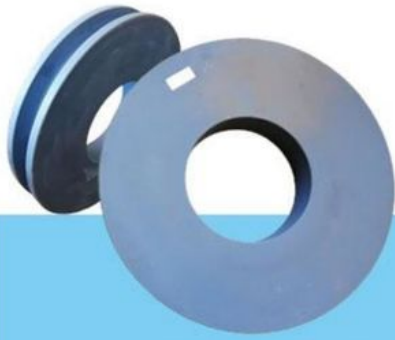
The inner core of the wire rope is a steel core, which has higher tensile strength.



High-speed Heavy-load Bearings



The bearings are high-speed heavy-load bearings, and the bearings use larger diameters to withstand greater loads.



MC Steel

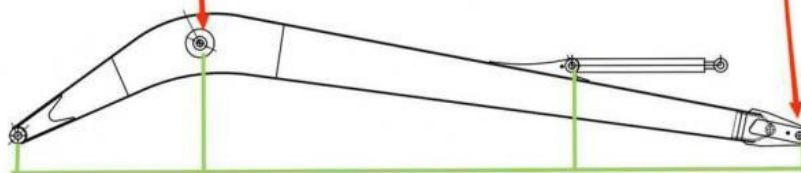
✓ The pulley is made of MC steel, which has the same hardness as steel, but is light and wear-resistant. The wheel diameter is enlarged to withstand greater loads.



Double-sided boring lathe



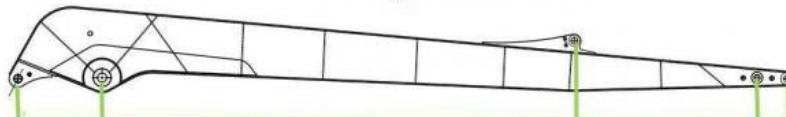
After the excavator boom and arm are assembled, the pins on the boom are drilled to ensure that the pins on the boom are parallel to each other and the cross section of the pin hole is perpendicular to the pin. The double-sided boring machine of the boom makes the hole position more accurate and the quality higher.



Make sure the cross section of the pin hole is perpendicular to the shaft.



Make sure the axis is parallel to the axis



Make sure the cross section of the pin hole is perpendicular to the shaft



Make sure the axis is parallel to the axis



Premium Welding Wire
Jinqiao Welding Wire

Certifications of hydraulic telescoping excavator boom:

4. Certifications



Introduction of Kaiping Zhonghe Machinery



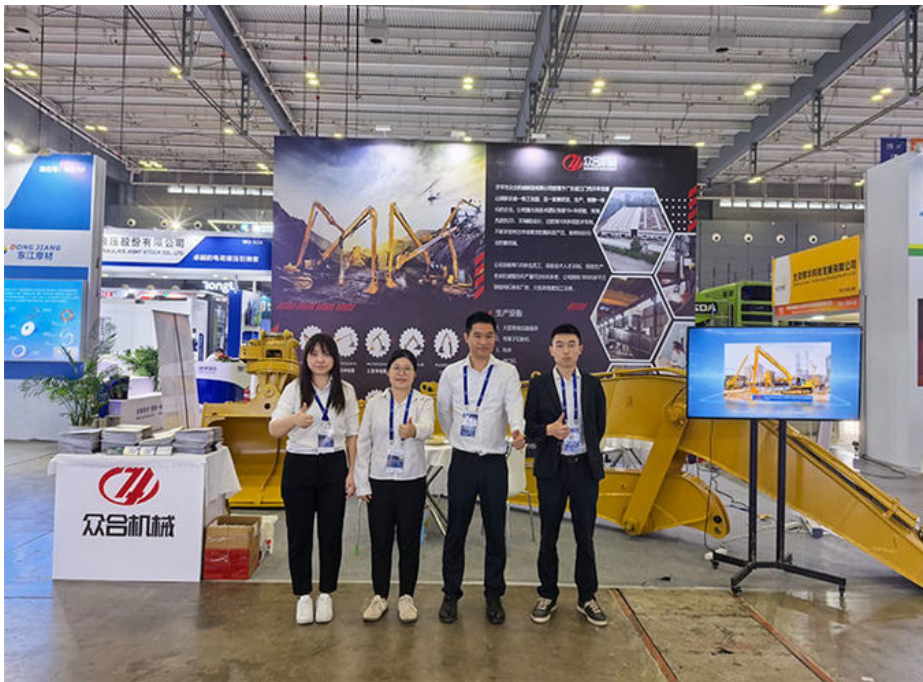
18000M² Steel Structure Workshop with Super Precision Machines

30 senior Designers

- ① Full Experienced
- ② Professional
- ③ Honest
- ④ Consumer-centric
- ⑤ Premium Products

The Exhibition we attended before:

THE 4TH CHANGSHA INTERNATIONAL CONSTRUCTION EQUIPMENT EXHIBITION



2024 BAUMA EXHIBITION



Top Picks of Kaiping Zhonghe Machinery's Excavator arm boom:



Long Arm Long Boom





Sliding Arm



Pile Arm Pile Boom



Tunnel Arm / Shorten Arm



Contact Details of our sales--Sales Manager: Aria:
Kaiping Zhonghe Machinery is a big Manufacturer of Excavator Arms and Booms
Welcome to contact for a big discount!

Whatsapp: wa.me/+8613822325403

Email: aria@excavatorboomarm.com

13822325403@163.com

Website link: www.excavatorlongarm.com

Key word:

hydraulic telescoping excavator boom
telescopic boom wheel excavator
telescope for mini excavator
excavator teledipper
Excavator Telescopic Boom Telescopic Arm
Excavator Long Reach Boom And Telescopic Arm
Telescopic arm for sale
excavator clamshell telescopic boom
excavator dipper arm
excavator clamshell telescopic arm

manufacturer excavatorlongarm longreachboomexcavator



Jiangmen Kaiping Zhonghe Machinery Manufacturing Co., Ltd

+86 13822325403

aria@excavatorboomarm.com

excavatorlongarm.com

