



Telescopic Excavator with Clamshell Bucket 30m 32m BS900E High Efficiency

Our Product Introduction

for more products please visit us on excavatorlongarm.com

Basic Information

- Place of Origin: China, Guangdong Province
- Brand Name: Kaiping Zhonghe Machinery Manufacturing Co. Ltd
- Certification: CE, patent, ISO, Certifications
- Model Number: SSB012
- Minimum Order Quantity: 1 set / piece
- Price: USD 129.00-USD12999.00
- Packaging Details: bubble / wooden cases/ others as you request
- Delivery Time: 5-20/works
- Payment Terms: T/T, L/C
- Supply Ability: 5 sets per week



Product Specification

- Efficiency: High Efficiency, High Effective
- Bucket: 2cbm 2.5cbm Clamshell Bucket / Grapple / Grab
- Cylinder: High Quality Cylinders, Famous Brand Cylinders
- Digging Depth(m): 18m 20m 25m 30m 32m
- Material: BS900E, Lighter And Stronger
- Maintanment: Easy Maintanment



More Images



Product Description

Excavator Telescopic Boom Arm with Clamshell Bucket with Teeth

Introduction of excavator telescopic boom arm:

The telescopic boom arm for excavator of an excavator represents a significant advancement in construction and excavation technology. This innovative design allows the boom to extend and retract, providing operators with enhanced reach and versatility for various tasks. Ideal for applications such as demolition, landscaping, and deep excavation, the telescopic excavator can access hard-to-reach areas and work at varying heights, maximizing efficiency on the job site. Constructed with robust materials and equipped with advanced hydraulic systems, the telescopic dipper ensures stability and precision, enabling operators to perform complex maneuvers with ease. Telescopic dipper for excavator's adaptability makes it an essential tool for modern construction projects, streamlining operations and improving overall productivity.

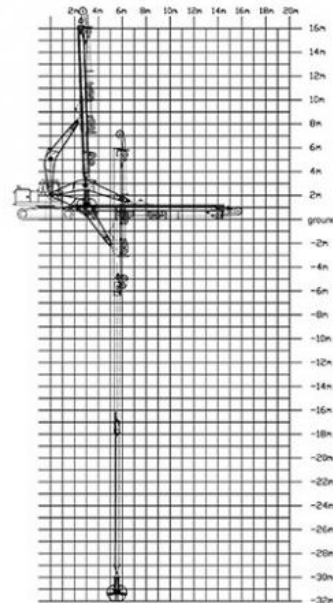
Suitable excavators for telescopic dipper for excavator: Sany, hitachi, komatsu, zoomlion, kobelco, etc

16m Telescopic Arm



16M- Telescopic Boom	
A. Maximum vertical digging depth	16000mm
B. Maximum vertical depth digging radius	7095mm
C. Maximum vertical excavation working radius	8801mm
D. Maximum vertical digging depth	13340mm
E. Maximum vertical excavation working radius	13586mm
F. Maximum unloading height	8044mm
G. Minimum turning radius	6150mm
H. The minimum turning radius is the height of the whole machine	8087mm

32m Telescopic Arm



Specification detail of one set of telescopic dipper for excavator:

Digging Depth(m)	Excavator Model(ton)	Clamshell Bucket(cbm)
12	20-25T	0.6
14		0.4
16		0.4
18		0.4
20	26-28	0.6
20-22m	30-33T	1.5cbm
	35-38T	
25m	30-33T	
	35-38T	
	35-38T	2.2cbm
	40-50T	
26-30m	36-50T	1.5cbm
		1.5cbm
		2cbm
		2cbm
		2.2cbm
		2.2cbm
31-32m	40-50T	2.2cbm
		2.5cbm

Welcome to send your excavator model to us for double check. Suitable length and model drawing will be sent soon.

Production of one set of telescopic dipper / telescopic excavator:

Production Details of Three-section telescopic arm

Premium Material---**BS900E** lighter and stronger

The materials: steel, cylinders, etc are all stored well and keep away from moisture and corrosion



Cleaning and dredging



Telescopic arm test



Bridge construction projects



Deep pit work



For Deep foundation pit construction project



For unloading materials



For Large-scale earthworks





Premium Wire Rope

Xianyang Baoshi Rotary wire rope--can bear larger tension and impact



Multi-strand Wire Rope



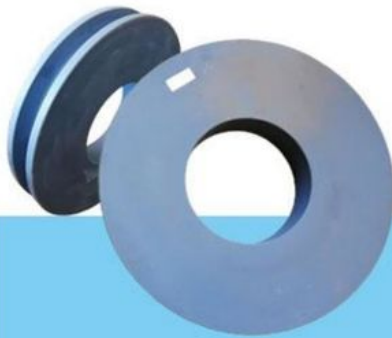
The inner core of the wire rope is a steel core, which has higher tensile strength.



High-speed Heavy-load Bearings



The bearings are high-speed heavy-load bearings, and the bearings use larger diameters to withstand greater loads.



MC Steel



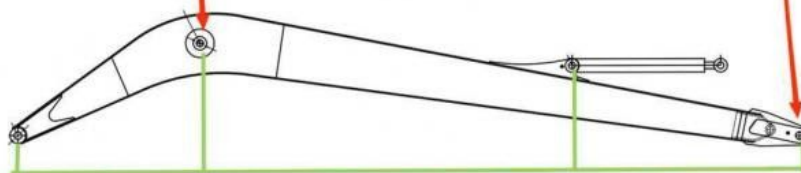
The pulley is made of MC steel, which has the same hardness as steel, but is light and wear-resistant. The wheel diameter is enlarged to withstand greater loads.



Double-sided boring lathe



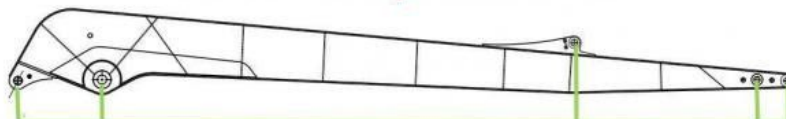
After the excavator boom and arm are assembled, the pins on the boom are drilled to ensure that the pins on the boom are parallel to each other and the cross section of the pin hole is perpendicular to the pin. The double-sided boring machine of the boom makes the hole position more accurate and the quality higher.



Make sure the cross section of the pin hole is perpendicular to the shaft.



Make sure the axis is parallel to the axis



Make sure the cross section of the pin hole is perpendicular to the shaft



Make sure the axis is parallel to the axis



Premium Welding Wire
Jinqiao Welding Wire

Certifications of telescopic dipper arm for excavator:

4. Certifications



Kaiping Zhonghe Machinery's introduction:

Introduction of Kaiping Zhonghe Machinery



18000M² Steel Structure Workshop with Super Precision Machines

30 senior Designers

- ① Full Experienced
- ② Professional
- ③ Honest
- ④ Consumer-centric
- ⑤ Premium Products

***Quality guaranteed *Full Tests *Customer Centric *Professional**
Top Picks of Kaiping Zhonghe Machinery's Excavator arm boom:



Long Arm Long Boom





Sliding Arm



Pile Arm Pile Boom



Tunnel Arm / Shorten Arm



Contact Details of our sales--Sales Manager:

Kaiping Zhonghe Machinery is a big Manufacturer of Excavator Arms and Booms

Welcome to contact for a big discount!

Whatsapp: wa.me/+8613822325403

Email: aria@excavatorboomarm.com

13822325403@163.com

Website link: www.excavatorlongarm.com

Key word:

telescopic excavator
excavator telescopic
telescopic boom arm
telescopic dipper arm
excavator telescopic arm dipper stick 28m
excavator telescopic boom arm
hitachi excavator telescopic boom
telescopic dipper
excavator telescopic arm china hitachi
telescopic dipper for excavator
telescopic arrow for excavator



Jiangmen Kaiping Zhonghe Machinery Manufacturing Co., Ltd

+86 13822325403

aria@excavatorboomarm.com

excavatorlongarm.com

9 Huancui West Road, Cuishanhu New Area, Kaiping City, Guangdong Province, China

