



Top 1 30M Excavator Long Boom Arm For Cat 350 Sany 550 Hitachi ZX1200

Our Product Introduction

for more products please visit us on excavatorlongarm.com

Basic Information

- Place of Origin: Jiangmen City, Guangdong Province, China
- Brand Name: Kaiping Zhonghe Machinery
- Certification: CE, patent, ISO
- Model Number: Excavator Long Arm 009
- Minimum Order Quantity: 1 set / piece
- Price: USD 150.00-USD11150.00
- Packaging Details: bubble / wooden cases
- Delivery Time: 5-35/works
- Payment Terms: T/T, L/C
- Supply Ability: 7 sets per week



Product Specification

- Features: Longer Life-span, Not Easy Cracking
- Color: Customized Yellow Red Orange White
- Suitable Excavator: 55ton 65ton 120ton Excavator
- Material: Premium Q355B, Q690D, Q355NE
- After-sales Service: Online Support, Video Technical Support
- Warranty: 6 Months For The Arm And Boom
- Condition: New, Brand New
- OEM: Available
- MOQ: 1 Piece
- Highlight: **ZX1200 Excavator Long Boom Arm,
30M Excavator Long Boom Arm,
Cat 350 Excavator Long Boom Arm**



More Images



Product Description

30M Long Reach Boom Arm for 50ton 60ton 65ton 120ton

Quick Detail of one set of Kaiping Zhonghe Machinery's long reach boom excavator:

* Longer service life-span *High Efficiency *Well Performance *Work Smoothly



Suitable Working Environment of Kaiping Zhonghe Machinery's long reach boom:

Construction Sites: Ideal for digging foundations, trenches, and other deep excavations where standard excavators cannot reach effectively.

Marine Applications: Useful for dredging or working on docks and piers, providing access to underwater and elevated areas.

Demolition Projects: Effective for reaching high structures or areas that are difficult to access with standard equipment.

Landscaping: Suitable for large-scale landscaping projects, allowing for the removal of soil or debris from hard-to-reach areas.

Mining Operations: Beneficial in open-pit mining for reaching deep deposits while maintaining stability.



Specifications of one set of long excavator boom:

30M long reach boom for sale for Hitachi 1200: Big boom, Small arm, Bucket, Bucket cylinder.

Other models of long reach boom excavator for sale:

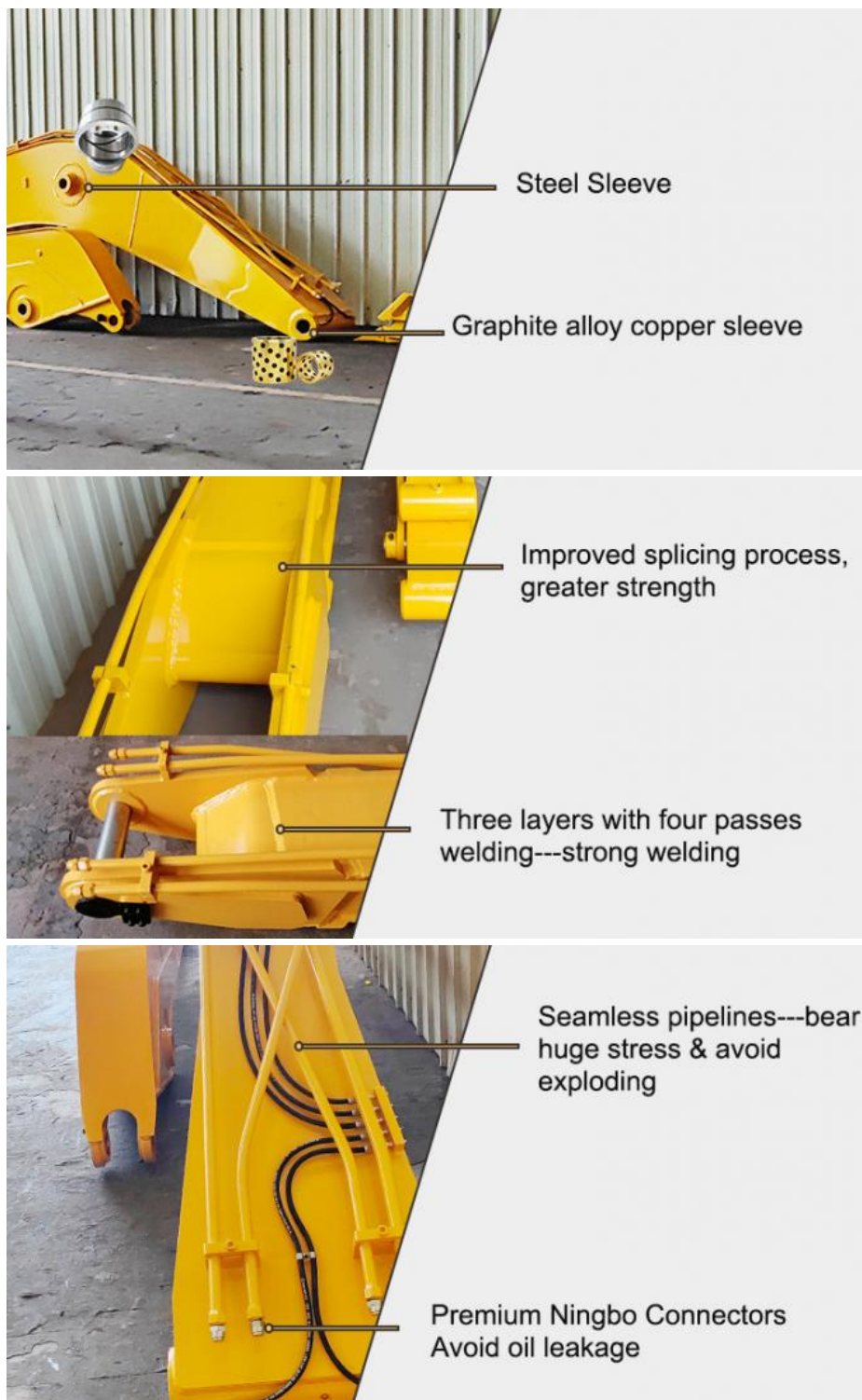
Excavator Model(ton)	Total Length(m)
20-47T	17-18m
24-47T	19-20m
25-47T	21-22m
30-55T	23-24m

Welcome to send your excavator model. We will recommend the suitable length of long reach boom arm and model drawing to you soon.

Excavator long reach boom for sale's detail:

Steel Material of long reach excavator reach: We use Shaogang Q355B for its high quality.

Connectors of long boom arm excavator: Equipped with international standard connectors for easier future installation.
Sleeves for long boom arm excavator: The boom end is fitted with a Graphite Alloy Copper Sleeve for superior durability, while steel sleeves are used in other areas.
Welding Wire of long reach arm for excavator: Utilizes premium JinQiao Welding Wires for enhanced welding performance.
Internal Design of long excavator arm: Features strategically placed transverse reinforcement plates that significantly boost the boom arm's strength.



One set of long excavator long reach boom arm can carry with:

Standard Bucket
Clamshell Bucket
Mud Bucket
Rake
Ripper
V shape Bucket
...



Standard Bucket



Clamshell Bucket



Mud Bucket



Ripper



Rake



V shape Bucket

Feedback of Excavator Long Excavator Arm from Clients:



More details of one set of excavator long reach boom arm:



Top Picks:

Key word of Excavator Arms and Booms:

long arm excavator
mini excavator bucket
excavator long boom
hydraulic arm
long reach excavator
excavator boom
construction machinery parts
kobelco excavator





Tunnel Arm / Shorten Arm



Sliding Arm



Feel free to contact Aria~~ Big Discount is Awaiting~~

Kaiping Zhonghe Machinery is a big Manufacturer of Excavator Long Reach Boom

Welcome to contact for a big discount!

Whatsapp: wa.me/+8613822325403

Email: aria@excavatorboomarm.com
13822325403@163.com

Website link: www.excavatorlongarm.com

manufacturer excavatorlongarm longreachboomexcavator



Jiangmen Kaiping Zhonghe Machinery Manufacturing Co., Ltd



+86 13822325403



aria@excavatorlongarm.com



excavatorlongarm.com

9 Huancui West Road, Cuishanhu New Area, Kaiping City, Guangdong Province, China