

30M Excavator Long Reach Boom for Hitachi 1200 Q355B Steel Material

Our Product Introduction

for more products please visit us on excavatorlongarm.com

Basic Information

- Place of Origin: Guangdong Province, China
- Brand Name: Zhonghe Machinery
- Certification: CE, patent, ISO
- Model Number: JCB0019
- Minimum Order Quantity: 1 set / piece
- Price: USD 150.00-USD10050.00
- Packaging Details: bubble
- Delivery Time: 5-35/works
- Payment Terms: T/T, L/C
- Supply Ability: 7 sets per week



Product Specification

- Features: Longer Life-span, Not Easy Cracking
- Warranty: 6 Months For The Arm And Boom
- Suitable Excavator: 120 Ton Excavator
- Color: Customized
- Material: Premium Q355B Or Others
- Condition: New, Brand New



More Images



Product Description

30M Long Reach Boom Excavator Hitachi Excavator Long Reach Boom Arm

Quick Detail of one set of long reach boom excavator:

High-Quality Steel Material: We utilize Shaogang Q355B, known for its superior welding properties and resistance to cracking.

(Q690D / Q355NE material are also provided according to clients requirements)

Reinforcement of Load-Bearing Components: This enhances durability and extends the lifespan of the product.

Robust Welding Practices: Each plate undergoes deep beveling prior to welding, and our welders are seasoned professionals with extensive training.

Expert Design: Our designs surpass those of our competitors, ensuring exceptional performance.



Suitable Application condition: Construction work, dredging, digging silt, sand, soil, etc

Specifications of one set of Long Reach Boom Excavator:

30M excavator long arm for Hitachi 1200: Big boom, Small arm, Bucket, Bucket cylinder.

Other models of long reach boom excavator:

Excavator Model	Total Length
20-47T	17-18m
24-47T	19-20m
25-47T	21-22m
30-55T	23-24m

Welcome to send your excavator model. We will recommend the suitable length and model drawing to you soon.

Long reach boom excavator for sale's detail:

Steel Material: We use Shaogang Q355B for its high quality.

Connectors: Equipped with international standard connectors for easier future installation.

Welding Wire: Utilizes premium JinQiao Welding Wires for enhanced welding performance.

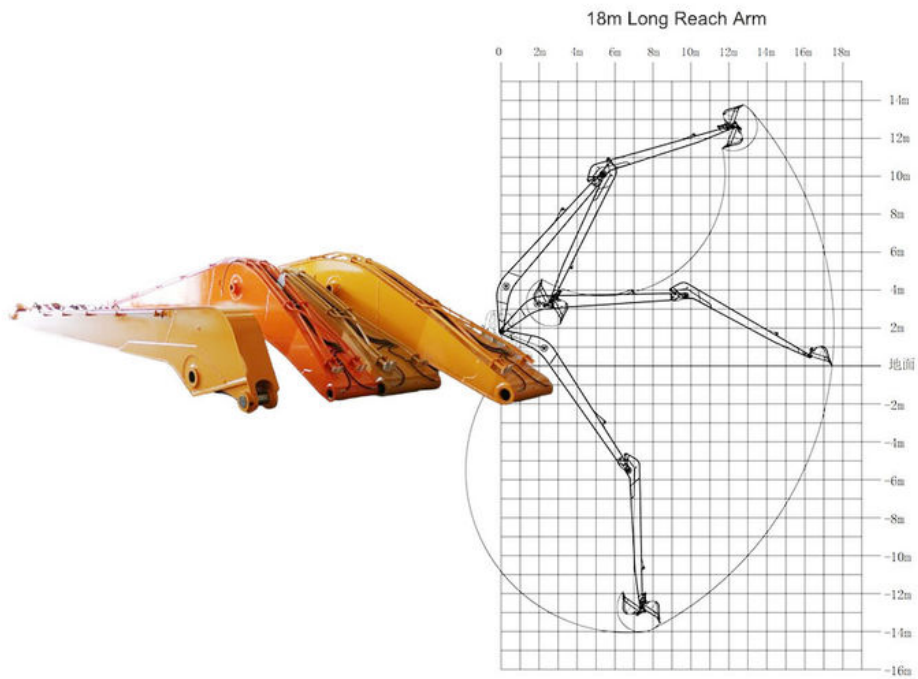
Internal Design: Features strategically placed transverse reinforcement plates that significantly boost the boom arm's strength.

Sleeves for Long Boom Excavators: The boom end is fitted with a Graphite Alloy Copper Sleeve for superior durability, while steel sleeves are used in other areas.



One set of long reach boom excavator include:

One big boom, one small arm, one bucket, one bucket cylinder, one set of Linckage, Pins, If you also need other accessories, we can also add up the ones.



Feedback of long reach boom excavator from Clients:

Positive Feedback From Clients

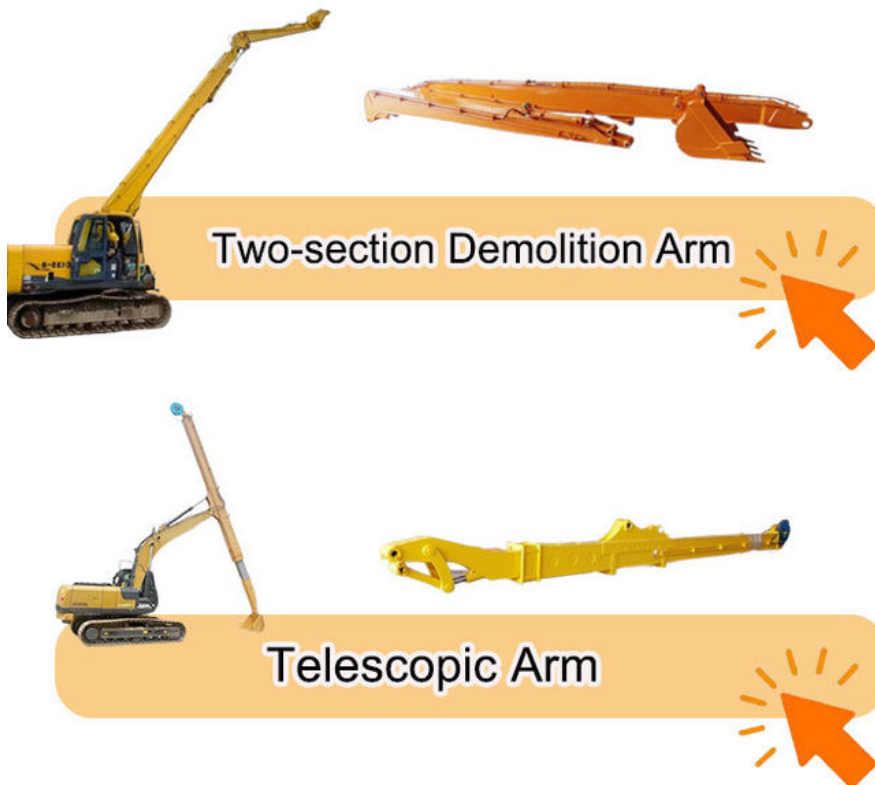


Production Process of long reach boom excavator:

*Full Tests * Experienced * Professional * Strict * Comprehensive



Top Picks of Our Excavator Arms and Booms:





Tunnel Arm / Shorten Arm



Sliding Arm



Feel free to contact Aria~~ Big Discount is Awaiting~~

Kaiping Zhonghe Machinery is a big Manufacturer of Excavator Arms and Booms
Welcome to contact for a big discount!

Whatsapp: wa.me/+8613822325403

Email: aria@excavatorboomarm.com
13822325403@163.com

Website link: www.excavatorlongarm.com

manufacturer excavatorlongarm longreachboomexcavator



Jiangmen Kaiping Zhonghe Machinery Manufacturing Co., Ltd



+86 13822325403



aria@excavatorboomarm.com



excavatorlongarm.com

9 Huancui West Road, Cuishanhu New Area, Kaiping City, Guangdong Province, China