



16.8M Excavator Pile Driver Pile Driving Machine for Cat Hitachi Kobelco Sany

Our Product Introduction

for more products please visit us on excavatorlongarm.com

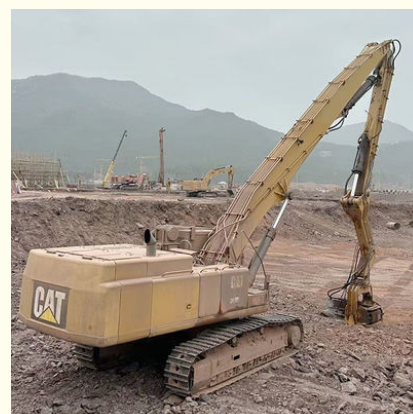
Basic Information

- Place of Origin: Guangdong Province, China
- Brand Name: Kaiping Zhonghe Machinery Manufacturing Co. Ltd
- Certification: CE, patent, ISO
- Model Number: 16.8m 20m 22m
- Minimum Order Quantity: 1 set / piece
- Price: USD 199.00-USD10999.00
- Packaging Details: bubble / wooden cases
- Delivery Time: 5-25/works
- Payment Terms: T/T, L/C
- Supply Ability: 5 sets per week



Product Specification

- Material: Shaogang Q355B
- Welding Wire: Jinqiao Welding Wire
- Quality: Premium
- Connectors: Thicken Connectors
- After Sales Service: Available
- Pipeline: Seamless Pipeline
- Warranty: 6 Months
- Precision: High Precision



More Images



Product Description

16.8M 18M 19M 21M 24M Excavator Pile Driving Arm

Introduction of one set of excavator pile driving arm:

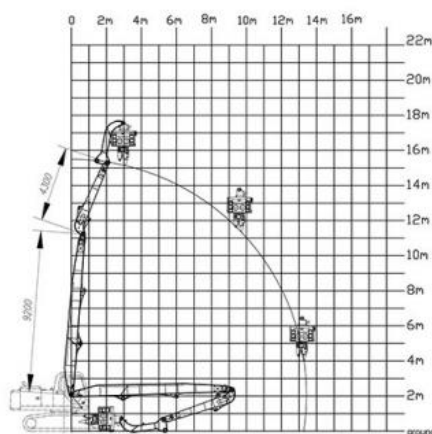
We are excited to present our cutting-edge hydraulic pile driver attachment for excavators, meticulously crafted to boost efficiency and effectiveness in construction and civil engineering applications. This advanced attachment enables accurate and forceful pile driving, guaranteeing the ideal placement of foundations and support systems. Designed for longevity and user-friendliness, it easily pairs with multiple excavator models. The powerful hydraulic mechanism minimizes both the time and labor needed for pile driving tasks. By incorporating this attachment into your operations, you can anticipate enhanced productivity and dependability on-site, solidifying its status as a must-have tool for construction experts.

Specification of one set of excavator pile driving arm:

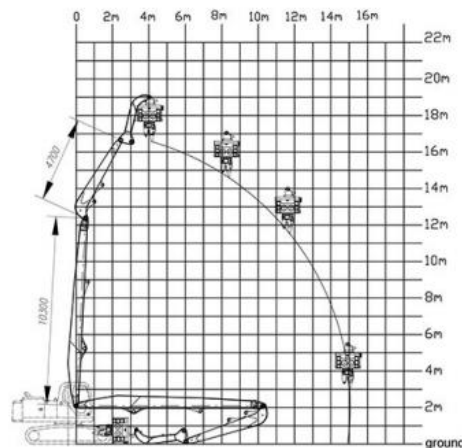
Category	Excavator Model(ton)	Section(m)	Total Length(m)
Boom	20-24T	8	11-12
		3	
Boom	25-28T	8.5	12.5-13
		3.5	
Boom	30-38T	9.7	13.5
		3.8	
Boom	36-39T	10.5	15
		4.5	
Boom	40-47	9.8	13-14.2
		4	
Boom	40-50	11	15-15.8
		4.8	
Boom	45-52	11.5	16.5-16.8
		5.3	
Boom	47-52	12.2	18-19
		6	
Boom	49-52	14	21-22
		7	
Boom	60-70	14	21-22
		7	
Boom	65-85	15.2	24m
		8.8	

Welcome to send your excavator model to us. Suitable length of excavator pile driving arm and model drawing will be sent soon.

13.5 Pile Arm Pile Boom



15m Pile Arm Pile Boom



Production Details of one set of excavator pile driving arm:

* Full Test * Professional * Full Experienced



Large floor-standing
double-sided boring
machine
Higher accuracy

Panel is cut by CNC
plasma machine with
less deformation



Beveling Machine
Every board will be
beveled before being
welded which enhances
the weld bead

More Details of one set of excavator pile driving arm:





Overall Quality

- * Q355B Material
- * Centralized lubrication system

Boom Base

- * Graphite alloy copper sleeve
- * The boom seat sleeve adopts all in one molding process



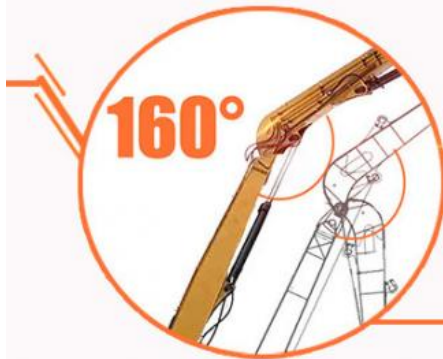
Precision Pipe

- * Seamless precision steel pipe
- * Hydraulic pipelines section design, convenient for later maintenance

Welding process



- *Four layers five passes welding
- *High-quality Ningbo connectors



Open Angle

- *The angle between boom and arm can reach 160°
- *Comparing with the same length pile driving arm, ours can pile higher.

Certifications:

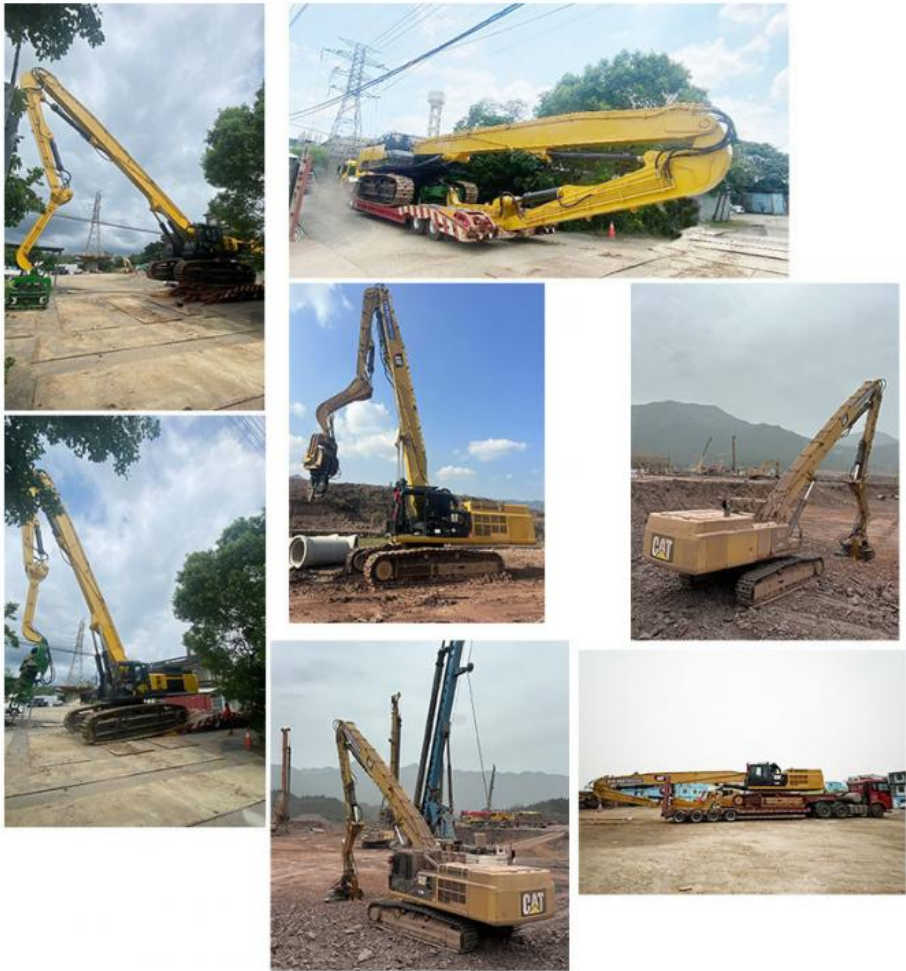
- * Professional
- * Experienced
- * Precision

4. Certifications



Feedback from clients of excavator pile driving arm:





Top Picks of Kaiping Zhonghe Machinery:



Sliding Arm



Long Arm Long Boom





Contact Details of Sales Manager:

Kaiping Zhonghe Machinery is a big Manufacturer of Excavator Arms and Booms

Key word: long reach boom excavator, pile arm pile boom, demolition arm, shorten arm/ tunnel arm, rock arm rock boom, telescopic arm, etc

Welcome to contact for a big discount!

Whatsapp: wa.me/+8613822325403

Email: aria@excavatorboomarm.com

13822325403@163.com

Website link: www.excavatorlongarm.com

longreachboomexcavator manufacturer excavatorlongarm excavator excavation



Jiangmen Kaiping Zhonghe Machinery Manufacturing Co., Ltd



+86 13822325403



aria@excavatorboomarm.com



excavatorlongarm.com

9 Huancui West Road, Cuishanhu New Area, Kaiping City, Guangdong Province, China