



Excavator Telescopic Arm with Clamshell Bucket for Construction BS900E

Our Product Introduction

for more products please visit us on excavatorlongarm.com

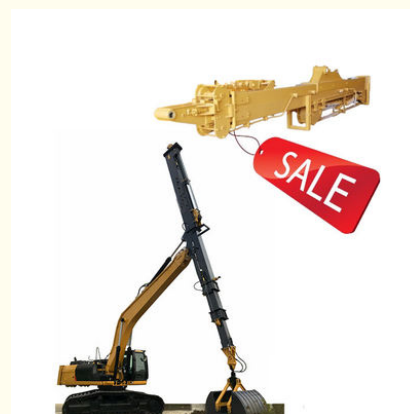
Basic Information

- Place of Origin: Guangdong Province, China
- Brand Name: Kaiping Zhonghe Machinery Manufacturing Co. Ltd
- Certification: CE, patent, ISO
- Model Number: SSB008
- Minimum Order Quantity: 1 set / piece
- Price: USD 300-USD22800
- Packaging Details: bubble / wooden cases
- Delivery Time: 5-25/works
- Payment Terms: T/T, L/C
- Supply Ability: 5 sets per week



Product Specification

- Material: BS900E, Lighter And Stronger Material
- Quality: Premium, High Quality
- Digging Depth(m): 18m 20m 25m 30m 32m
- Key Word: Telescopic Excavator Arm With Clamshell Bucket
- Bucket: 2cbm 2.5cbm Clamshell Bucket / Standard Bucket
- Suitable Excavators(ton): 25ton - 65ton



More Images



Product Description

Excavator Telescopic Arm with Clamshell Bucket / Standard Bucket

Brief introduction of one set of excavator telescopic:

Excavator telescopic arm is suitable for construction work which need deep digging. The front attachments can be a standard bucket /

clamshell bucket / grapple etc.

If the material is gill, sand, soil, using clamshell bucket is suitable.

If the material is gravel / stone, using grapple is suitable.

If clients want to use a standard bucket, we can also customize the front head. The telescopic arm can also carry a clamshell bucket and a standard bucket.

Excavator telescopic arm / excavator telescopic boom is famous for its big capacity which can carry 1.5cbm, 2cbm, 2.5cbm.

Material of excavator telescopic arm: BS900E , or others as you request, lighter and stronger material can lessen the load of the excavator, work more efficient, and with longer life-span.

Connectors we use: Enhanced Thickened Connectors, not easy oil leakage, no easy breaking

Wire Rope: multiple-strand wire rope, with longer service life-span.

Pipeline of excavator telescopic: Seamless Pipeline

Cylinders of excavator telescopic arm: High quality cylinders from famous brand



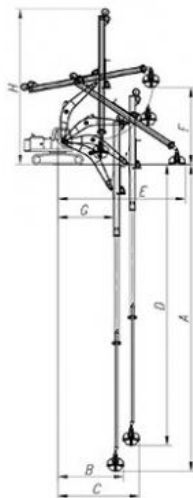
Specification of one set of excavator telescopic arm / telescopic boom for excavator

Digging Depth(m)	Excavator Model(ton)	Clamshell Bucket Capacity(cbm)
20-22m	30-33T	1.5cbm
	35-38T	
25m	30-33T	2.2cbm
	35-38T	
	40-50T	
26-30m	36-50T	1.5cbm
		1.5cbm
		2cbm
		2cbm
		2.2cbm
		2.2cbm
	40-50T	2.2cbm
		2.2cbm

31-32m	40-50T	
		2.5cbm

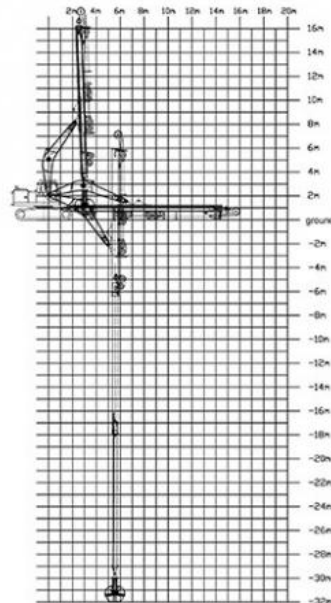
Welcome to send your excavator model to us. Suitable Length and model drawing will be sent soon.
Whatsapp: +86 13822325403 Email: aria@excavatorboomarm.com

16m Telescopic Arm



16M- Telescopic Boom	
A. Maximum vertical digging depth	16000mm
B. Maximum vertical depth digging radius	7095mm
C. Maximum vertical excavation working radius	8801mm
D. Maximum vertical digging depth	13340mm
E. Maximum vertical excavation working radius	13586mm
F. Maximum unloading height	8044mm
G. Minimum turning radius	6150mm
H. The minimum turning radius is the height of the whole machine	8087mm

32m Telescopic Arm



Pictures of one set of excavator telescopic arm with clamshell bucket / grapple:

Suitable excavators to install excavator telescopic arm: Sany, Hitachi, Komatsu, Zoomlion, Kobelco, Kato, Sumitomo, etc.





Cleaning and dredging



Telescopic arm test



Bridge construction projects



Deep pit work



For Deep foundation pit construction project



For unloading materials



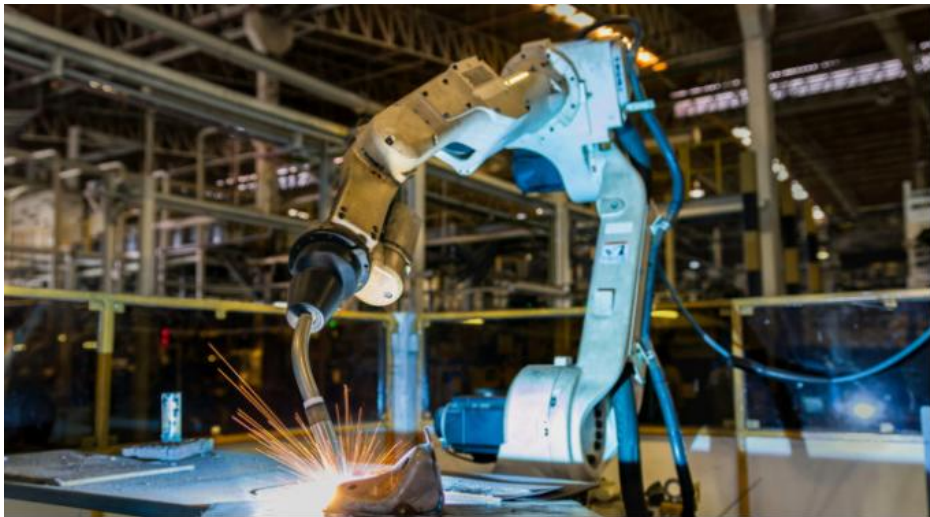
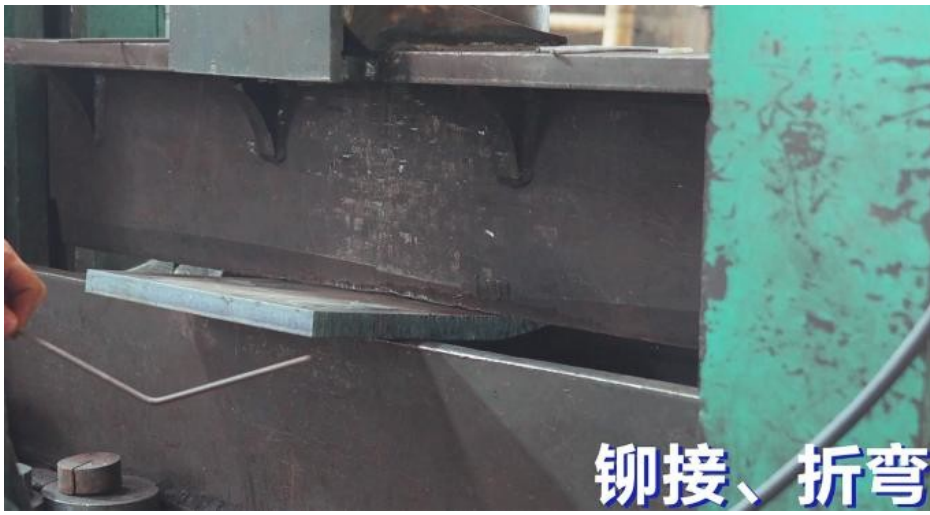
For Large-scale earthworks



Production details of one set of excavator telescopic arm with clamshell bucket



机械开坡口



Our team show:

***Experienced * Professional *Customization service available *24H online * Comprehensive After-sales service**

Introduction of Kaiping Zhonghe Machinery



OUR CUSTOMERS

Our products are stable used in Australia, New Zealand, Norway, Sweden, USA, Canada, Austria, Ireland, Britain, Malaysia, Philippines, Mauritius, Russian, Korea, Ecuador, China, etc.

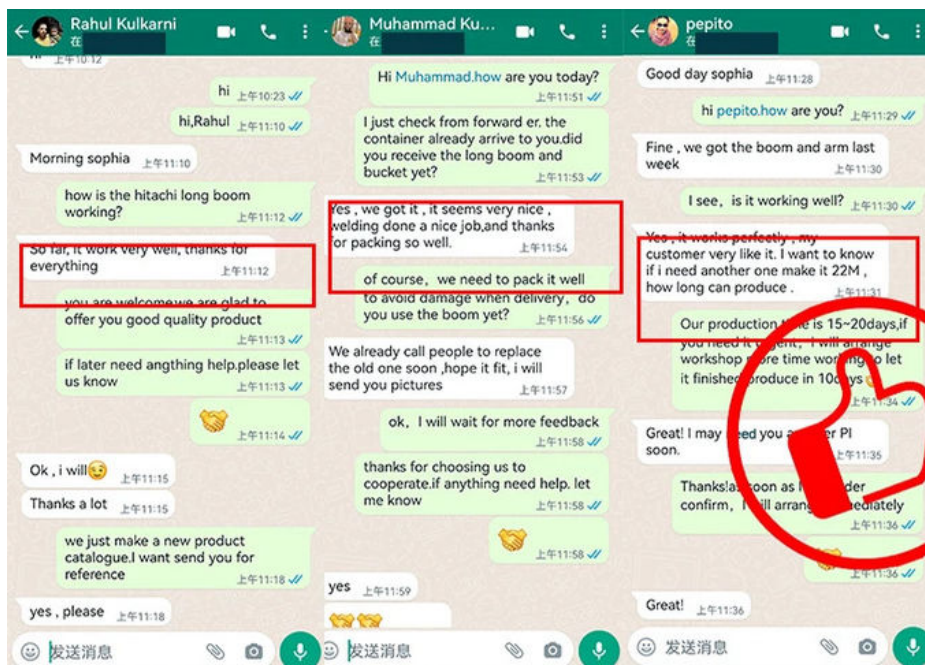


18000M² Steel Structure Workshop with Super Precision Machines

30 senior Designers

- ① Full Experienced
- ② Professional
- ③ Honest
- ④ Consumer-centric
- ⑤ Premium Products

Feedback of excavator telescopic arm with clamshell bucket / grapple from clients:



Feedback from Clients



from Jimmy:
cool, the telescopic boom
works effectively. suitable for
grabbing.



from Michael:
suitable for digging caisson.
save energy.



from Tonny:
Very excellent telescopic boom.
on my excavator suitably. perfect



from Tom:
The boom works very good.
safe and balanced operation
very nice service.

Contact Details of Kaiping Zhonghe Machinery Manufacturing Co. LTD:

Kaiping Zhonghe Machinery is a big Manufacturer of Excavator Arm and Boom

Welcome to contact for a big discount!

Whatsapp: wa.me/+8613822325403

Email: aria@excavatorboomarm.com
13822325403@163.com

Website link: www.excavatorlongarm.com

manufacturer excavatorlongarm longreachboomexcavator excavator excavation

Key word of our excavator arm and boom:

telescopic excavator
excavator telescopic
telescopic boom arm
telescopic dipper arm
excavator telescopic arm dipper stick 28m
excavator telescopic boom arm
hitachi excavator telescopic boom
telescopic dipper
excavator telescopic arm china hitachi
telescopic dipper for excavator
telescopic arrow for excavator
telescopic arm
clamshell telescopic arm
clamshell telescopic arm excavator
excavator with telescopic boom
extendable boom excavator
teledipper excavator
telescopic clamshell excavator
telescopic dipper arm excavator



Jiangmen Kaiping Zhonghe Machinery Manufacturing Co., Ltd



+86 13822325403



aria@excavatorboomarm.com



excavatorlongarm.com

9 Huancui West Road, Cuishanhu New Area, Kaiping City, Guangdong Province, China