



## Telescopic Dipper Arm with 28m 30m 32m Digging Depth for Construction

Our Product Introduction

### Basic Information

- Place of Origin: Guangdong Province, China
- Brand Name: Kaiping Zhonghe Machinery Manufacturing Co. Ltd
- Certification: CE, patent, ISO
- Model Number: SSB002
- Minimum Order Quantity: 1 set / piece
- Price: USD 300-USD22000
- Packaging Details: bubble / wooden cases
- Delivery Time: 5-25/works
- Payment Terms: T/T, L/C
- Supply Ability: 5 sets per week



### Product Specification

- Material: BS900E, Lighter And Stronger
- Digging Depth(m): 20m 25m 30m 32m
- Bucket: Clamshell Bucket / Standard Bucket
- Key Word: Telescopic Excavator Arm
- Quality: Premium, High Quality
- Suitable Excavators(ton): 25ton-55ton



### More Images



for more products please visit us on [excavatorlongarm.com](http://excavatorlongarm.com)

## Product Description

### Telescopic Excavator with Clamshell Bucket / Standard Bucket for Hitachi Komatsu Sany Volvo

#### Brief introduction of one set of telescopic excavator:

The telescopic arm excavator is a versatile tool essential for construction tasks. The telescopic arm section of the excavator is fitted with either a clamshell bucket or a standard bucket, allowing for a wide range of applications and adaptability to different job requirements. This flexibility makes it an invaluable asset on construction sites, capable of handling various materials and tasks efficiently.

**Material of excavator telescopic boom arm:** BS900E , or others as you request, lighter and stronger material can lessen the load of the excavator, work more efficient, and with longer life-span.

**Connectors we use:** Enhanced Thickened Connectors, not easy oil leakage, no easy breaking

**Pipeline of excavator telescopic boom arm:** Seamless Pipeline

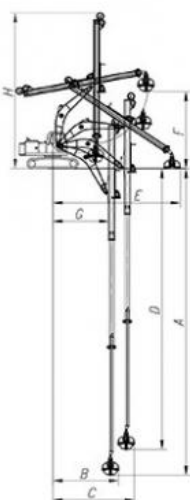
**Cylinders:** High quality cylinders

#### Specification of one set of excavator telescopic boom arm:

Digging Depth(m)	Excavator Model(ton)	Clamshell Bucket Capacity(cbm)
20-22m	30-33T	1.5cbm
	35-38T	
25m	30-33T	2.2cbm
	35-38T	
	40-50T	
26-30m	36-50T	1.5cbm
		1.5cbm
		2cbm
		2cbm
		2.2cbm
		2.2cbm
31-32m	40-50T	2.2cbm
		2.5cbm

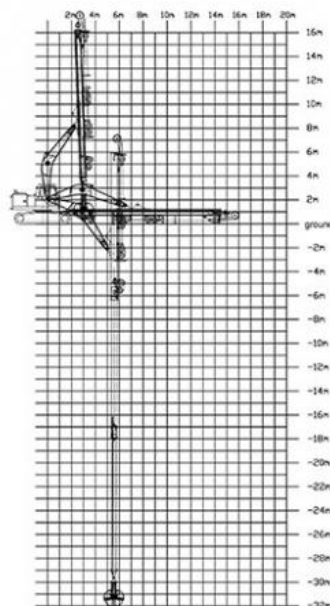
Welcome to send your excavator model to us. Suitable Length and model drawing will be sent soon.

### 16m Telescopic Arm



16M- Telescopic Boom	
A. Maximum vertical digging depth	16000mm
B. Maximum vertical depth digging radius	7095mm
C. Maximum vertical excavation working radius	8801mm
D. Maximum vertical digging depth	13340mm
E. Maximum vertical excavation working radius	13586mm
F. Maximum unloading height	8044mm
G. Minimum turning radius	6150mm
H. The minimum turning radius is the height of the whole machine	8087mm

### 32m Telescopic Arm



Pictures of one set of excavator telescopic boom arm:

Suitable excavators: Sany, Hitachi, Komatsu, Zoomlion, Kobelco, Kato, Sumitomo, etc.



Cleaning and dredging



Telescopic arm test



Bridge construction projects



Deep pit work



For Deep foundation pit construction project



For unloading materials



For Large-scale earthworks

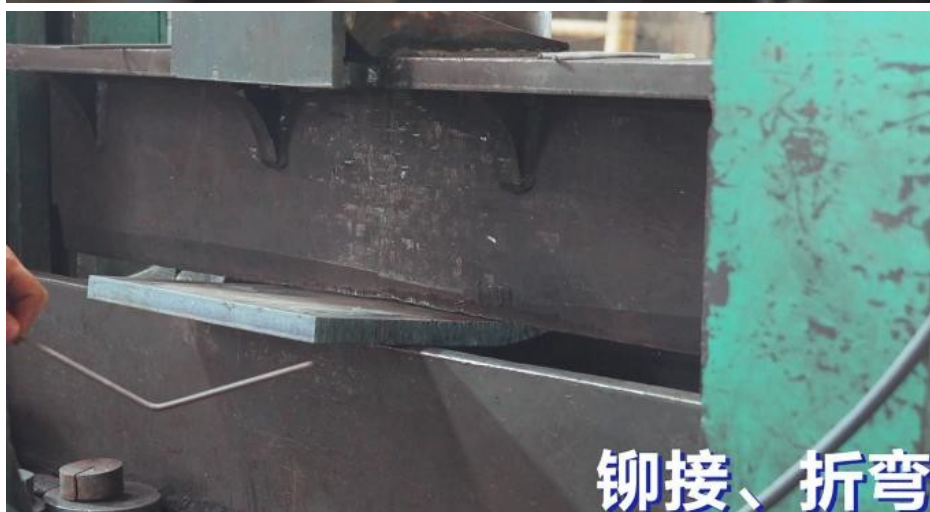


Production details of one set of excavator telescopic boom arm:





**机械开坡口**

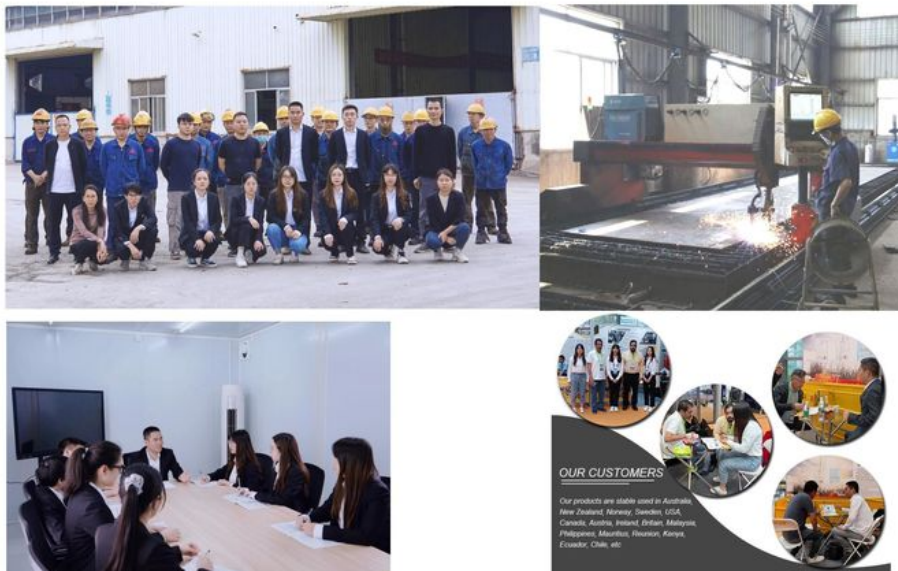


**铆接、折弯**



Our team show:

## Introduction of Kaiping Zhonghe Machinery





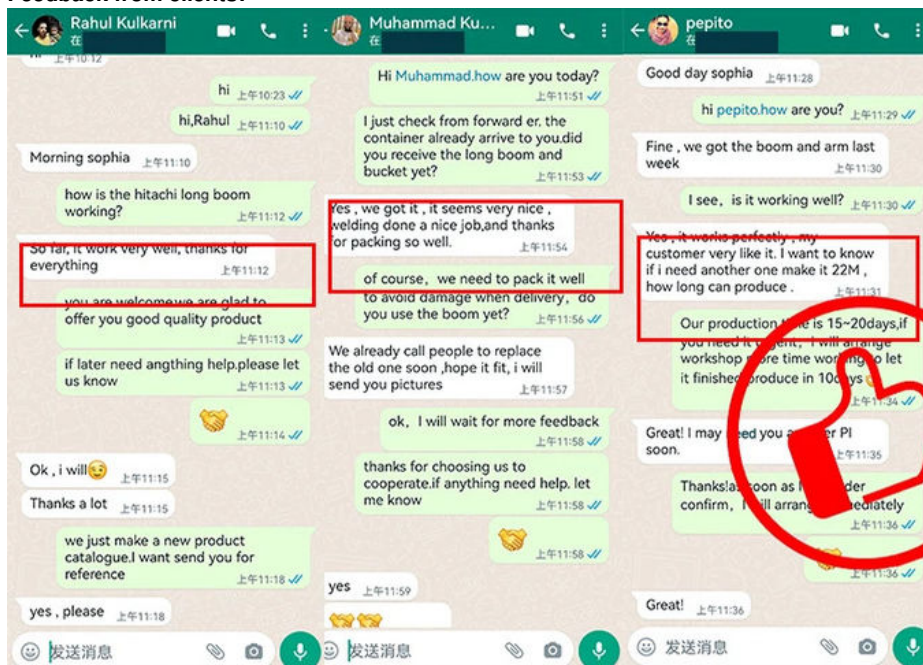


18000M<sup>2</sup> Steel Structure Workshop with Super Precision Machines

30 senior Designers

- ① Full Experienced
- ② Professional
- ③ Honest
- ④ Consumer-centric
- ⑤ Premium Products

#### Feedback from clients:



# Feedback from Clients



from Jimmy:  
cool, the telescopic boom  
works effectively. suitable for  
grabbing.



from Michael:  
suitable for digging caisson.  
save energy.



from Tonny:  
Very excellent telescopic boom.  
on my excavator suitably. perfect



from Tom:  
The boom works very good.  
safe and balanced operation  
very nice service.

## Contact Details:

Kaiping Zhonghe Machinery is a big Manufacturer of Excavator Arms and Booms  
Welcome to contact for a big discount!

Whatsapp: [wa.me/+8613822325403](https://wa.me/+8613822325403)

Email: [aria@excavatorboomarm.com](mailto:aria@excavatorboomarm.com)

[13822325403@163.com](mailto:13822325403@163.com)

Website link: [www.excavatorlongarm.com](http://www.excavatorlongarm.com)

manufacturer excavatorlongarm longreachboomexcavator excavator excavation



Jiangmen Kaiping Zhonghe Machinery Manufacturing Co., Ltd



+86 13822325403



aria@excavatorboomarm.com



excavatorlongarm.com

9 Huancui West Road, Cuishanhu New Area, Kaiping City, Guangdong Province, China