



Extended Boom Excavator Telescopic Boom Telescopic Arm For Construction Work

Our Product Introduction

for more products please visit us on excavatorlongarm.com

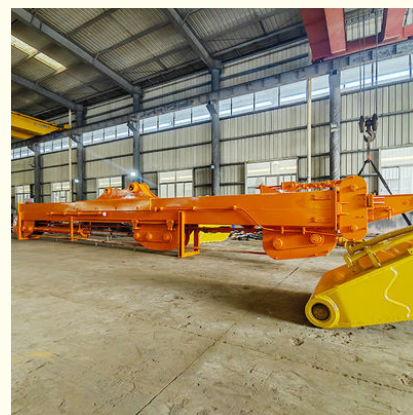
Basic Information

- Place of Origin: Kaiping City, Guangdong Province, China
- Brand Name: Kaiping Zhonghe Machinery Manufacturing Co. Ltd
- Certification: CE, patent, ISO
- Model Number: SSB009
- Minimum Order Quantity: 1 set / piece
- Price: USD 199.00-USD11999.00
- Packaging Details: bubble / wooden cases / others as you request
- Delivery Time: 5-25/works
- Payment Terms: T/T, L/C or others as you request
- Supply Ability: 6 sets per week



Product Specification

- Material: BS900E, Premium And High Quality Material
- Connectors: High Quality Connectors
- Quality: High Quality, Premium
- Bucket: 1cbm 1.5cbm 2cbm 2.5cbm Bucket
- Long Reach(m): 16m 18m 20m 25m 30m 32m
- Warranty: 6 Months
- Highlight: **Excavator Telescopic Arm, Construction Work extended boom excavator**



More Images



Product Description

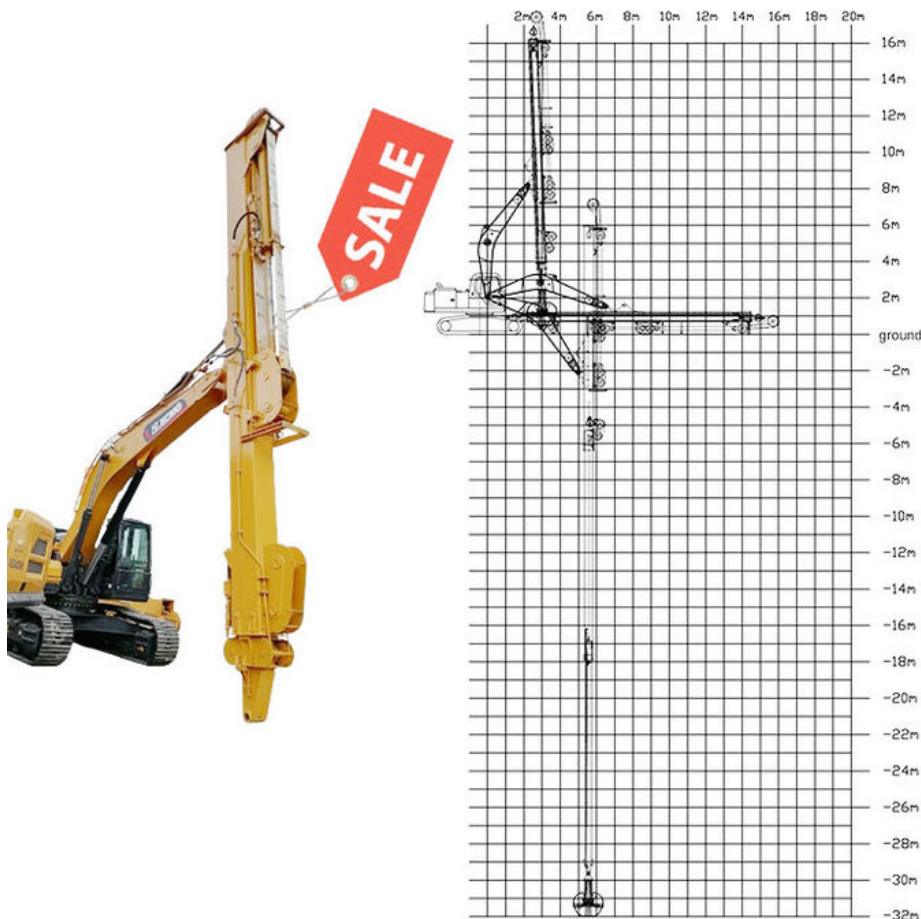
Excavator Clamshell Telescopic Boom Excavator Dipper Arm with Clamshell Bucket

Brief introduction of one set of Telescopic Arm With Clamshell Bucket:

Excavators Boom Dipper Arm is a versatility tool in construction work with long reach. The digging depth of one set of Excavator Long Reach Stick Boom And Arm can reach 16m 18m 20m 25m 30m 32m.

Excavator Attachments: can carry clamshell bucket, hydraulic grapple, standard bucket etc

Some pictures of one set of Telescopic Arm With Clamshell Bucket:



Specification of one set of Excavator Long Reach Telescopic Boom

Digging Depth(m)	Excavator Model(ton)	Clamshell Bucket(cbm)	Counterweight(ton)
12	20-25T	0.6	0
14		0.4	0
16		0.4	0
18		0.4	2
20	26-28	0.6	3
20-22	30-33T	1.5	0
	35-38T		3T
	30-33T		0
	35-38T		0
25	35-38T	2.2	6T
	40-50T		0
26-30	36-50T	1.5	5T
		1.5	
		2	6T
		2	
		2.2	7T
		2.2	
	40-50T	2.2	6T

Welcome to send your excavator model to our sales manager, suitable length and model drawing of telescopic arm will be sent soon.

16m Excavator Long Reach Telescopic Boom model drawing and 32m Excavator Long Reach Telescopic Boom

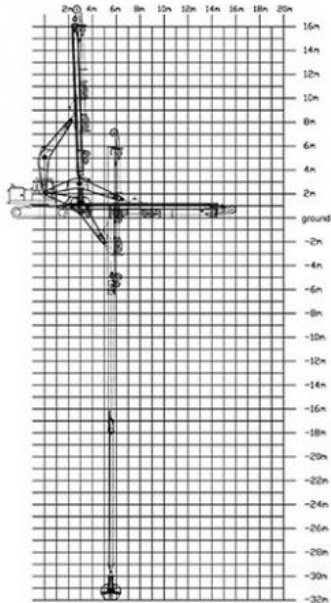
model drawing are as follow:

16m Telescopic Arm



16M- Telescopic Boom	
A. Maximum vertical digging depth	16000mm
B. Maximum vertical depth digging radius	7095mm
C. Maximum vertical excavation working radius	8801mm
D. Maximum vertical digging depth	13340mm
E. Maximum vertical excavation working radius	13585mm
F. Maximum unloading height	8044mm
G. Minimum turning radius	6150mm
H. The minimum turning radius is the height of the whole machine	8087mm

32m Telescopic Arm



Details of our **Excavator Long Reach Telescopic Boom:**

1.2 Details of Three-section telescopic arm 三段式伸缩臂细节



The external hose pulley separates the hose from the wire rope, avoids the friction between the wire rope and the hose, reduces failures, and makes maintenance more convenient



Centralized lubrication system
--easy for later maintenance



Stop valve - easy to replace
attachments
lessen oil leakage



Double oil seal design prevents hydraulic oil from leaking, prolongs the service life of the cylinder



Clamshell bucket adopts double cylinders---less failure rate easy maintenance, not easy leak oil

Materials of one set Excavator Long Reach Telescopic Boom:

Premium Wire Rope

Xianyang Baoshi Rotary wire rope--can bear larger tension and impact



Multi-strand Wire Rope



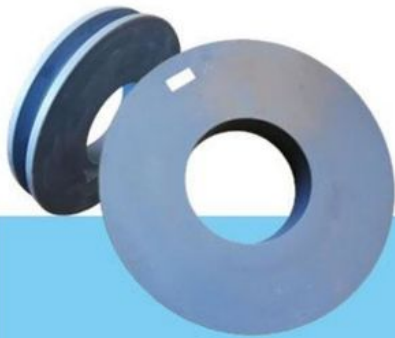
The inner core of the wire rope is a steel core, which has higher tensile strength.



High-speed Heavy-load Bearings



The bearings are high-speed heavy-load bearings, and the bearings use larger diameters to withstand greater loads.



MC Steel



The pulley is made of MC steel, which has the same hardness as steel, but is light and wear-resistant. The wheel diameter is enlarged to withstand greater loads.

Feedback of Excavator Long Reach Telescopic Boom from Clients:

*Nearly 0 fail rate *High efficiency *Safe * Stable



Cleaning and dredging



Telescopic arm test



Bridge construction projects



Deep pit work



For Deep foundation pit construction project



For unloading materials



For Large-scale earthworks



Feedback from Clients



from Jimmy:
cool, the telescopic boom
works effectively. suitable for
grabbing.



from Michael:
suitable for digging caisson.
save energy.



from Tonny:
Very excellent telescopic boom.
on my excavator suitably. perfect



from Tom:
The boom works very good.
safe and balanced operation
very nice service.

Certifications of one set of Excavator Long Reach Telescopic Boom:
*Professional *Experienced

4. Certifications



Contact details of our sales manager:

Kaiping Zhonghe Machinery is a big Manufacturer of Excavator Arms and Booms
Welcome to contact for a big discount!

Whatsapp: wa.me/+8613822325403

Email: aria@excavatorboomarm.com
13822325403@163.com

Website link: www.excavatorlongarm.com

manufacturer excavatorlongarm longreachboomexcavator



Jiangmen Kaiping Zhonghe Machinery Manufacturing Co., Ltd



+86 13822325403



aria@excavatorboomarm.com



excavatorlongarm.com

9 Huancui West Road, Cuishanhu New Area, Kaiping City, Guangdong Province, China