



Adjustable Excavator Clamshell Telescopic Boom for Grabbing Sand Soil

Our Product Introduction

Basic Information

- Place of Origin: Guangdong Province, China
- Brand Name: Kaiping Zhonghe Machinery Manufacturing Co. Ltd
- Certification: CE, patent, ISO
- Model Number: SSB005
- Minimum Order Quantity: 1 set / piece
- Price: USD 199.00-USD11999.00
- Packaging Details: bubble / wooden cases / others as you request
- Delivery Time: 5-25/works
- Payment Terms: T/T, L/C or others as you request
- Supply Ability: 5 sets per week



Product Specification

- Long Reach(m): 18m 20m 25m 30m 32m
- Bucket: 1.5cbm 2cbm 2.5cbm Bucket
- Material: BS900E, Premium Material
- Warranty: 6 Months For Telescopic Arm And 3 Months For Bucket
- Connectors: High Quality Connectors Thickened
- Quality: High Quality



More Images



for more products please visit us on excavatorlongarm.com

Product Description

Excavator Long Reach Stick Boom And Arm with Clamshell Bucket with Teeth

Brief introduction of one set of hydraulic telescoping excavator boom

The Excavator Long Reach Telescopic Boom is specifically designed for operations that require outstanding reach and precision, making it ideal for tasks such as dredging, deep excavation, and utility work in confined environments. With its sophisticated telescopic system, the boom can be extended significantly, allowing for better access to difficult-to-reach areas without the need to frequently move the excavator. This extended reach enhances operational efficiency by reducing downtime and improving the handling of materials over greater spans. Additionally, its robust construction ensures durability and stability, enabling it to perform effectively in a variety of challenging terrains.

Grabbing materials: sand, soil, silt, gravel, stone etc.

Some pictures of one set of hydraulic telescoping excavator boom:



Specification of one set of hydraulic telescoping excavator boom:

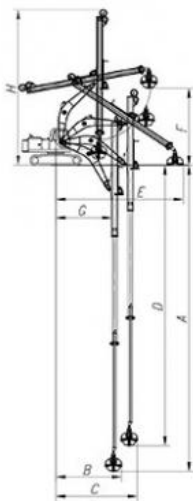
Digging Depth(m)	Excavator Model(ton)	Clamshell Bucket(cbm)	Counterweight(ton)
12	20-25T	0.6	0
14		0.4	0
16		0.4	0
18		0.4	2
20	26-28	0.6	3
20-22	30-33T	1.5	0
	35-38T		3T
25	30-33T	1.5	0
	35-38T		6T
	35-38T	2.2	0
	40-50T		0
26-30	36-50T	1.5	5T
		1.5	
		2	6T
		2	
		2.2	
		2.2	7T

40-50T	2.2	6T
--------	-----	----

Welcome to send your excavator model to our sales manager, suitable length of excavator teledipper and model drawing of telescopic arm will be sent soon.

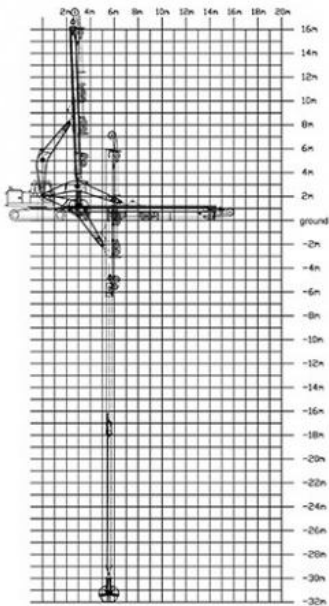
16m hydraulic telescoping excavator boom model drawing and 32m hydraulic telescoping excavator boom model drawing are as follow:

16m Telescopic Arm



16M- Telescopic Boom	
A. Maximum vertical digging depth	16000mm
B. Maximum vertical depth digging radius	7095mm
C. Maximum vertical excavation working radius	8801mm
D. Maximum vertical digging depth	13340mm
E. Maximum vertical excavation working radius	13586mm
F. Maximum unloading height	8044mm
G. Minimum turning radius	6150mm
H. The minimum turning radius is the height of the whole machine	8087mm

32m Telescopic Arm



Details of our **hydraulic telescoping excavator boom**:

1.2 Details of Three-section telescopic arm

三段式伸缩臂细节



The external hose pulley separates the hose from the wire rope, avoids the friction between the wire rope and the hose, reduces failures, and makes maintenance more convenient



Centralized lubrication system
--easy for later maintenance



Stop valve - easy to replace
attachments
lessen oil leakage



Double oil seal design prevents hydraulic oil from leaking, prolongs the service life of the cylinder



Clamshell bucket adopts double cylinders---less failure rate easy maintenance, not easy leak oil

Materials of one set **hydraulic telescoping excavator boom**:

Premium Wire Rope

Xianyang Baoshi Rotary wire rope--can bear larger tension and impact



Multi-strand Wire Rope



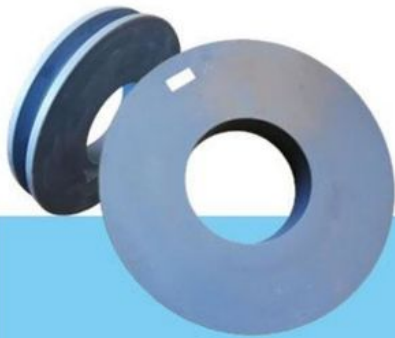
The inner core of the wire rope is a steel core, which has higher tensile strength.



High-speed Heavy-load Bearings



The bearings are high-speed heavy-load bearings, and the bearings use larger diameters to withstand greater loads.



MC Steel



The pulley is made of MC steel, which has the same hardness as steel, but is light and wear-resistant. The wheel diameter is enlarged to withstand greater loads.

Feedback of hydraulic telescoping excavator boom from Clients:



Cleaning and dredging



Telescopic arm test



Bridge construction projects



Deep pit work



For Deep foundation pit construction project



For unloading materials



For Large-scale earthworks



Feedback from Clients



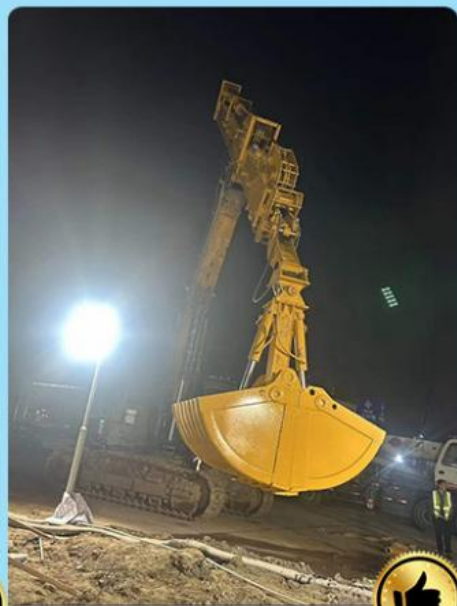
from Jimmy:
cool, the telescopic boom
works effectively. suitable for
grabbing.



from Michael:
suitable for digging caisson.
save energy.



from Tonny:
Very excellent telescopic boom.
on my excavator suitably. perfect



from Tom:
The boom works very good.
safe and balanced operation
very nice service.

Certifications of one set of hydraulic telescoping excavator boom:

4. Certifications



Top Picks of our excavator arm and boom:



Sliding Arm



Long Arm Long Boom



Telescopic Arm



Contact details of our sales manager:

Kaiping Zhonghe Machinery is a big Manufacturer of Excavator Arms and Booms

Welcome to contact for a big discount!
Whatsapp: wa.me/+8613822325403
Email: aria@excavatorboomarm.com
13822325403@163.com
Website link: www.excavatorlongarm.com
manufacturer excavatorlongarm longreachboomexcavator



Jiangmen Kaiping Zhonghe Machinery Manufacturing Co., Ltd



+86 13822325403



aria@excavatorboomarm.com



excavatorlongarm.com

9 Huancui West Road, Cuishanhu New Area, Kaiping City, Guangdong Province, China