



## Telescopic Excavator With Clamshell Bucket With Teeth For Grabbing

Our Product Introduction

### Basic Information

- Place of Origin: Guangdong Province, China
- Brand Name: Kaiping Zhonghe Machinery Manufacturing Co. Ltd
- Certification: CE, patent, ISO
- Model Number: SSB005
- Minimum Order Quantity: 1 set / piece
- Price: USD 199.00-USD10999.00
- Packaging Details: bubble / wooden cases / others as you request
- Delivery Time: 5-25/works
- Payment Terms: T/T, L/C or others as you request
- Supply Ability: 5 sets per week

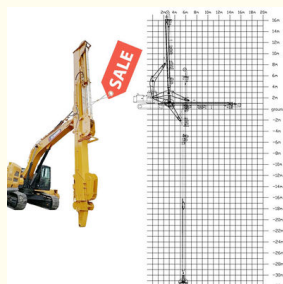


### Product Specification

- Material: BS900E, Premium Material
- Bucket: 1cbm 1.5cbm 2cbm 2.5cbm Bucket
- Quality: High Quality
- Connectors: High Quality Connectors
- Long Reach(m): 18m 20m 25m 30m 32m
- Warranty: 6 Months
- Highlight: **Grabbing Telescopic Excavator, Teeth Telescopic Excavator**



### More Images



for more products please visit us on [excavatorlongarm.com](http://excavatorlongarm.com)

## Product Description

### Telescopic Excavator Telescopic Dipper Arm with Clamshell Bucket

#### Brief introduction of one set of telescopic excavator :

The Excavator Long Reach Telescopic Boom is engineered for tasks that demand exceptional reach and accuracy, making it perfect for applications like dredging, deep excavation, and working in tight spaces for utility projects. Its advanced telescopic mechanism permits significant extension of the boom, which improves accessibility to challenging locations without necessitating constant repositioning of the excavator. This enhanced reach leads to greater operational efficiency by minimizing downtime and facilitating better material handling across longer distances. Moreover, its sturdy build guarantees resilience and stability, making it capable of tackling demanding jobs across diverse landscapes.

#### Some pictures of one set of telescopic excavator:



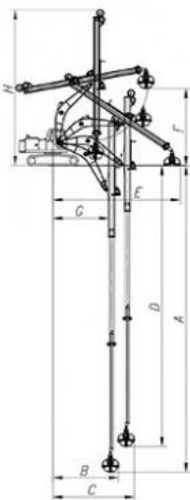
#### Specification of one set of telescopic excavator:

Digging Depth(m)	Excavator Model(ton)	Clamshell Bucket(cbm)	Counterweight(ton)
12	20-25T	0.6	0
14		0.4	0
16		0.4	0
18		0.4	2
20		0.6	3
20-22	26-28	1.5	0
	30-33T		3T
	35-38T		0
	30-33T		0
25	35-38T	2.2	6T
	40-50T		0
26-30	36-50T	1.5	5T
		1.5	
		2	6T
		2	
		2.2	7T
		2.2	
	40-50T	2.2	6T

Welcome to send your excavator model to our sales manager, suitable length and model drawing of telescopic arm will be sent soon.

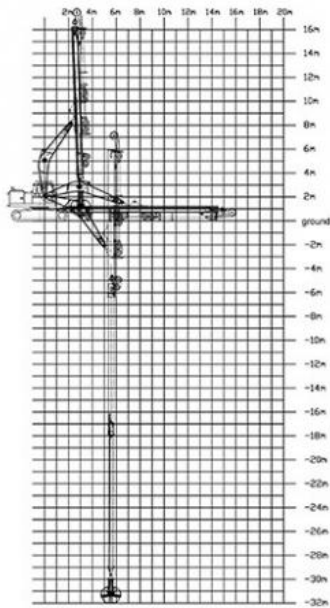
16m etelescopic excavator model drawing and 32m telescopic excavator model drawing are as follow:

## 16m Telescopic Arm



16M- Telescopic Boom	
A. Maximum vertical digging depth	16000mm
B. Maximum vertical depth digging radius	7095mm
C. Maximum vertical excavation working radius	8801mm
D. Maximum vertical digging depth	13340mm
E. Maximum vertical excavation working radius	13586mm
F. Maximum unloading height	8044mm
G. Minimum turning radius	6150mm
H. The minimum turning radius is the height of the whole machine	8087mm

## 32m Telescopic Arm



Details of our telescopic excavator:

### 1.2 Details of Three-section telescopic arm 三段式伸缩臂细节



The external hose pulley separates the hose from the wire rope, avoids the friction between the wire rope and the hose, reduces failures, and makes maintenance more convenient



Centralized lubrication system  
--easy for later maintenance



Stop valve - easy to replace attachments  
lessen oil leakage



Double oil seal design prevents hydraulic oil from leaking, prolongs the service life of the cylinder



Clamshell bucket adopts double cylinders---less failure rate easy maintenance, not easy leak oil

Materials of one set telescopic excavator:

### Premium Wire Rope

Xianyang Baoshi Rotary wire rope--can bear larger tension and impact



### Multi-strand Wire Rope



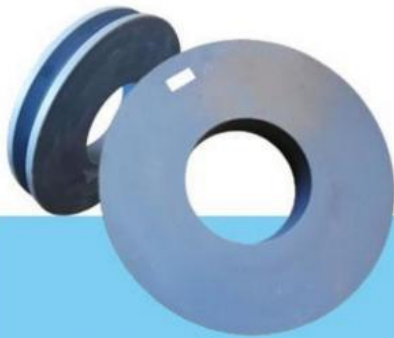
The inner core of the wire rope is a steel core, which has higher tensile strength.



## High-speed Heavy-load Bearings



The bearings are high-speed heavy-load bearings, and the bearings use larger diameters to withstand greater loads.



## MC Steel



The pulley is made of MC steel, which has the same hardness as steel, but is light and wear-resistant. The wheel diameter is enlarged to withstand greater loads.

Feedback of Telescopic Dipper Arm from Clients:





Cleaning and dredging



Telescopic arm test



Bridge construction projects



Deep pit work



For Deep foundation pit construction project



For unloading materials



For Large-scale earthworks



# Feedback from Clients



from Jimmy:  
cool, the telescopic boom  
works effectively. suitable for  
grabbing.



from Michael:  
suitable for digging caisson.  
save energy.



from Tonny:  
Very excellent telescopic boom.  
on my excavator suitably. perfect



from Tom:  
The boom works very good.  
safe and balanced operation  
very nice service.

Certifications of one set of Telescopic Dipper Arm:

## 4. Certifications



### Contact details of our sales manager:

Kaiping Zhonghe Machinery is a big Manufacturer of Excavator Arms and Booms

Key words of our excavator arm and boom:

excavator telescopic
telescopic boom arm
telescopic dipper arm
excavator telescopic arm dipper stick 28m
excavator telescopic boom arm

Welcome to contact for a big discount!

Whatsapp: [wa.me/+8613822325403](https://wa.me/+8613822325403)

Email: [aria@excavatorboomarm.com](mailto:aria@excavatorboomarm.com)  
[13822325403@163.com](mailto:13822325403@163.com)

Website link: [www.excavatorlongarm.com](http://www.excavatorlongarm.com)

manufacturer excavatorlongarm longreachboomexcavator



**Jiangmen Kaiping Zhonghe Machinery Manufacturing Co., Ltd**



+86 13822325403



[aria@excavatorlongarm.com](mailto:aria@excavatorlongarm.com)



[excavatorlongarm.com](http://excavatorlongarm.com)

9 Huancui West Road, Cuishanhu New Area, Kaiping City, Guangdong Province, China