



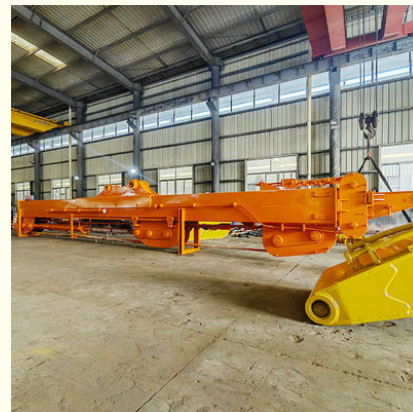
Excavator Teledipper Excavator Telescopic Boom Telescopic Arm For Construction

Our Product Introduction

for more products please visit us on excavatorlongarm.com

Basic Information

- Place of Origin: China, Guangdong Province
- Brand Name: Kaiping Zhonghe Machinery Manufacturing Co. Ltd
- Certification: CE, patent, ISO
- Model Number: SSB081
- Minimum Order Quantity: 1 set / piece
- Price: USD 129.00-USD13999.00
- Packaging Details: bubble / wooden cases/ others as you request
- Delivery Time: 5-20/works
- Payment Terms: T/T, L/C
- Supply Ability: 5 sets per week



Product Specification

- Efficiency: High Efficiency, High Effective
- Cylinder: High Quality Cylinders, Famous Brand Cylinders
- Material: BS900E, Lighter And Stronger
- Maintanment: Easy Maintanment, Add Lubricant Regularly
- Bucket: Clamshell Bucket / Hydraulic Grapple
- Digging Depth(m): 18m 20m 25m 30m 32m
- Highlight: **Telescopic Boom Telescopic Dipper Arm, Excavator Telescopic Dipper Arm, Construction Telescopic Dipper Arm**



More Images



Product Description

25m 30m 32m Excavator Teledipper Telescopic Excavator

Introduction of excavator teledipper:

The clamshell telescopic arm excavator represents a cutting-edge advancement in excavation and material handling technology. This specialized equipment is equipped with a distinctive clamshell bucket that opens and closes, enabling it to effectively scoop, lift, and transport a variety of materials. This feature makes it particularly suited for applications such as dredging, landscaping, and construction. The telescopic arm enhances its reach and versatility, allowing operators to easily access challenging areas. Constructed from durable materials and utilizing state-of-the-art hydraulic systems, this excavator offers smooth operation and precise maneuverability, making it an essential asset for projects that demand both strength and accuracy. Its adaptability to different working environments significantly boosts productivity and efficiency on any job site.

Suitable excavators for telescopic excavator : Sany, hitachi, komatsu, zoomlion, kobelco, etc

Specification detail of one set of excavator teledipper:

Digging Depth(m)	Excavator Model(ton)	Clamshell Bucket(cbm)
12	20-25T	0.6
14		0.4
16		0.4
18		0.4
20	26-28	0.6
20-22m	30-33T	1.5cbm
	35-38T	
	30-33T	
	35-38T	
25m	35-38T	2.2cbm
	40-50T	
26-30m	36-50T	1.5cbm
		1.5cbm
		2cbm
		2cbm
		2.2cbm
		2.2cbm
	40-50T	2.2cbm
31-32m	40-50T	2.2cbm
		2.5cbm

Welcome to send your excavator model to us for double check. Suitable length and model drawing will be sent soon.

Whatsapp: [+86 13822325403](https://wa.me/8613822325403)

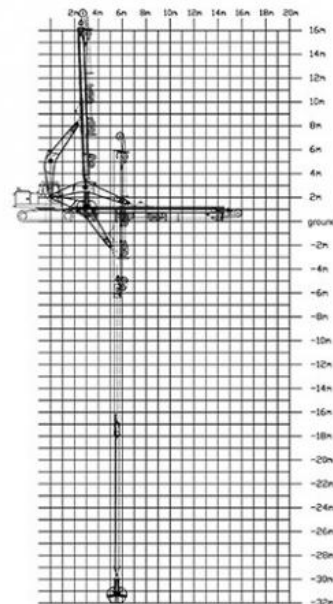


16m Telescopic Arm

32m Telescopic Arm



16M- Telescopic Boom	
A. Maximum vertical digging depth	16000mm
B. Maximum vertical depth digging radius	7095mm
C. Maximum vertical excavation working radius	8801mm
D. Maximum vertical digging depth	13340mm
E. Maximum vertical excavation working radius	13589mm
F. Maximum unloading height	8044mm
G. Minimum turning radius	6150mm
H. The minimum turning radius is the height of the whole machine	8087mm



Excavator teledipper 's Production Details:

- * **High Precision** make sure the excavator teledipper is installed on the excavator sutially
- * **Premium material** make the excavator teledipper work high efficiency
- * **Excellent design** make the excavator teledipper work stably and high efficiency

Production Details of Three-section telescopic arm

Premium Material---**BS900E** lighter and stronger

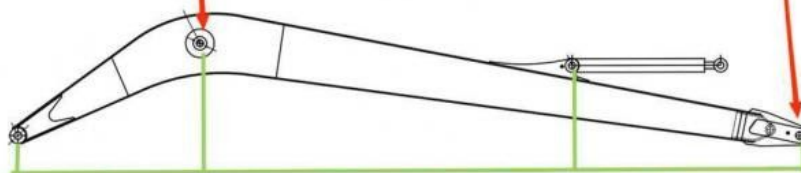
The materials: steel, cylinders, etc are all stored well and keep away from moisture and corrosion



Double-sided boring lathe



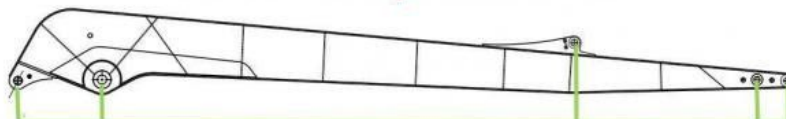
After the excavator boom and arm are assembled, the pins on the boom are drilled to ensure that the pins on the boom are parallel to each other and the cross section of the pin hole is perpendicular to the pin. The double-sided boring machine of the boom makes the hole position more accurate and the quality higher.



Make sure the cross section of the pin hole is perpendicular to the shaft.



Make sure the axis is parallel to the axis



Make sure the cross section of the pin hole is perpendicular to the shaft



Make sure the axis is parallel to the axis



Premium Welding Wire
Jinqiao Welding Wire

Certifications of clamshell telescopic arm excavator:

4. Certifications



Kaiping Zhonghe Machinery's introduction:
* Experienced *Professional *Strict

Introduction of Kaiping Zhonghe Machinery



18000M² Steel Structure Workshop with Super Precision Machines

30 senior Designers

- ① Full Experienced
- ② Professional
- ③ Honest
- ④ Consumer-centric
- ⑤ Premium Products

Top Picks of Excavator Arm and Boom:



Long Arm Long Boom





Sliding Arm



Telescopic Arm



Tunnel Arm / Shorten Arm



Contact Details of our sales:

Kaiping Zhonghe Machinery is a big Manufacturer of Excavator Arms and Booms

Welcome to contact for a big discount!

Whatsapp: wa.me/+8613822325403

Email: aria@excavatorboomarm.com

13822325403@163.com

Website link: www.excavatorlongarm.com

manufacturer excavatorlongarm longreachboomexcavator



Jiangmen Kaiping Zhonghe Machinery Manufacturing Co., Ltd



+86 13822325403



aria@excavatorboomarm.com



excavatorlongarm.com

9 Huancui West Road, Cuishanhu New Area, Kaiping City, Guangdong Province, China