



## Excavator With Telescopic Boom BS900E Better Welding Dig House Foundation

Our Product Introduction

for more products please visit us on excavatorlongarm.com

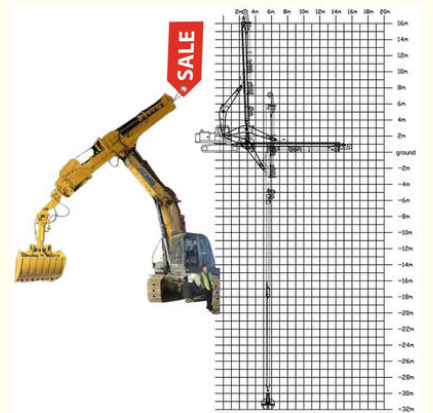
### Basic Information

- Place of Origin: Guangdong Province, China
- Brand Name: Kaiping Zhonghe Machinery Manufacturing Co. Ltd
- Certification: CE, patent, ISO
- Model Number: SSB085
- Minimum Order Quantity: 1 set / piece
- Price: USD 169.00-USD19999.00
- Packaging Details: bubble / wooden cases/ others as you request
- Delivery Time: 5-20/works
- Payment Terms: T/T, L/C
- Supply Ability: 5 sets per week



### Product Specification

- Material: BS900E, Lighter And Stronger
- Digging Depth(m): 18m 20m 25m 30m 32m
- Bucket: Clamshell Bucket, 2cbm, 2.5cbm
- Maintenance: Easy Maintenance, Low Fail Rate
- Efficiency: High Efficiency
- Cylinder: High Quality Cylinder
- Highlight: **Better Welding Telescopic Boom Excavator, Foundation Telescopic Boom Excavator, Telescopic Boom Excavator**



### More Images



## Product Description

### 25m 30m 32m Extendable Boom Excavator with Clamshell Bucket with Teeth

#### Introduction of one set extendable boom excavator:

The extendable boom excavator is a versatile and powerful piece of heavy machinery designed to enhance excavation capabilities in various applications. Featuring a boom that can be lengthened or shortened, this excavator allows operators to reach greater depths and heights, making it ideal for tasks such as digging trenches, lifting heavy materials, and working in confined spaces. Its hydraulic system ensures smooth and precise movements, enabling efficient operation even in challenging conditions. Constructed from durable materials, the extendable boom excavator is built to withstand the rigors of demanding job sites while providing exceptional stability and control. This adaptability not only improves productivity but also enhances safety, making it an essential asset for modern construction and excavation projects.

**Suitable excavators for teledipper excavator:** Sany, hitachi, komatsu, zoomlion, kobelco, etc

#### Specification detail of one set of teledipper excavator:

Digging Depth(m)	Excavator Model(ton)	Clamshell Bucket(cbm)
12	20-25T	0.6
14		0.4
16		0.4
18		0.4
20	26-28	0.6
20-22m	30-33T	1.5cbm
	35-38T	
25m	30-33T	
	35-38T	
	40-50T	2.2cbm
26-30m	36-50T	1.5cbm
		1.5cbm
		2cbm
		2cbm
		2.2cbm
	40-50T	2.2cbm
		2.2cbm
31-32m	40-50T	2.2cbm
		2.5cbm

Welcome to send your excavator model to us for double check. Suitable length and model drawing will be sent soon.



**Extendable boom excavator's Production Details:**

- \* High Precision make sure the extendable boom excavator is installed on the excavator suitably
- \* Premium material make the telescopic clamshell excavator work high efficiency
- \* Excellent design make the telescopic clamshell excavator work stably and high efficiency

## Production Details of Three-section telescopic arm

Premium Material---**BS900E** lighter and stronger

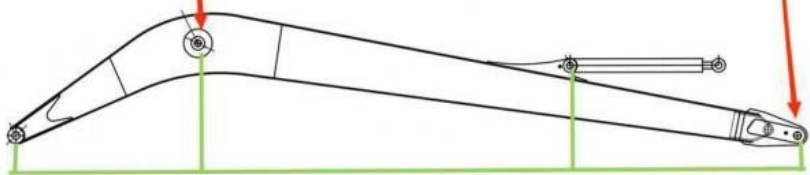
The materials: steel, cylinders, etc are all stored well and keep away from moisture and corrosion



# Double-sided boring lathe



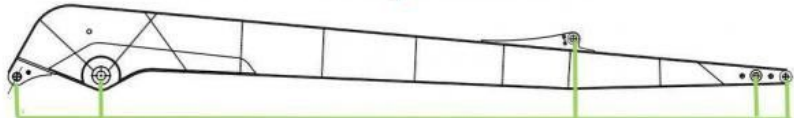
After the excavator boom and arm are assembled, the pins on the boom are drilled to ensure that the pins on the boom are parallel to each other and the cross section of the pin hole is perpendicular to the pin. The double-sided boring machine of the boom makes the hole position more accurate and the quality higher.



Make sure the cross section of the pin hole is perpendicular to the shaft.



Make sure the axis is parallel to the axis



Make sure the cross section of the pin hole is perpendicular to the shaft.



Make sure the axis is parallel to the axis



Premium Welding Wire  
Jinqiao Welding Wire

**Highlights of our telescopic clamshell excavator which excel other suppliers:**



## Premium Wire Rope

Xiayang Baoshi Rotary wire rope--can bear larger tension and impact



## Multi-strand Wire Rope



The inner core of the wire rope is a steel core, which has higher tensile strength.

### 1.2 Details of Three-section telescopic arm

三段式伸缩臂细节



The external hose pulley separates the hose from the wire rope, avoids the friction between the wire rope and the hose, reduces failures, and makes maintenance more convenient



Centralized lubrication system --easy for later maintenance



Stop valve - easy to replace attachments  
lessen oil leakage



Double oil seal design prevents hydraulic oil from leaking, prolongs the service life of the cylinder



Clamshell bucket adopts double cylinders---less failure rate easy maintenance, not easy leak oil

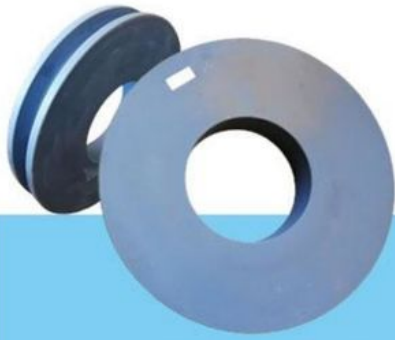


## High-speed Heavy-load Bearings



The bearings are high-speed heavy-load bearings, and the bearings use larger diameters to withstand greater loads.





## MC Steel

✓ The pulley is made of MC steel, which has the same hardness as steel, but is light and wear-resistant. The wheel diameter is enlarged to withstand greater loads.

### 1.3 Warranty 质保

6 months for the telescopic arm

3 months for the clamshell bucket

6 months for the cylinder (There is no warranty for cylinder or piston rod breakage or bending.)

not including the other easy to wear parts.



**Certifications of telescopic dipper arm excavator:**

## 4. Certifications



**Kaiping Zhonghe Machinery's introduction:**

**Key word:** telescopic dipper arm excavator, excavator long reach arm, excavator long arm, excavator long boom, excavator pile arm pile boom etc

## Introduction of Kaiping Zhonghe Machinery





18000M<sup>2</sup> Steel Structure Workshop with Super Precision Machines

30 senior Designers

- ① Full Experienced
- ② Professional
- ③ Honest
- ④ Consumer-centric
- ⑤ Premium Products

Contact Details of telescopic dipper arm excavator:

Kaiping Zhonghe Machinery is a big Manufacturer of Excavator Arms and Booms

Welcome to contact for a big discount!

Whatsapp: [wa.me/+8613822325403](https://wa.me/+8613822325403)

Email: [aria@excavatorboomarm.com](mailto:aria@excavatorboomarm.com)

[13822325403@163.com](mailto:13822325403@163.com)

Website link: [www.excavatorlongarm.com](http://www.excavatorlongarm.com)

manufacturer excavatorlongarm longreachboomexcavator



**Jiangmen Kaiping Zhonghe Machinery Manufacturing Co., Ltd**



+86 13822325403



[aria@excavatorboomarm.com](mailto:aria@excavatorboomarm.com)



[excavatorlongarm.com](http://excavatorlongarm.com)

9 Huancui West Road, Cuishanhu New Area, Kaiping City, Guangdong Province, China