



## Excavator Telescopic Boom Arm With Clamshell Bucket Grapple For Digging Silt

Our Product Introduction

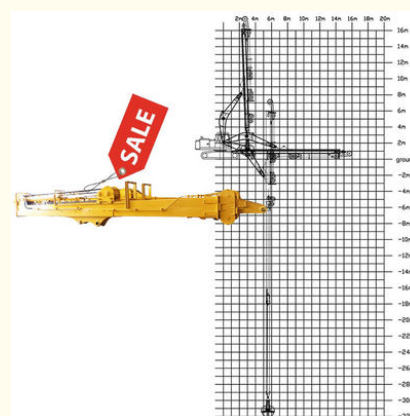
### Basic Information

- Place of Origin: China, Guangdong Province
- Brand Name: Kaiping Zhonghe Machinery Manufacturing Co. Ltd
- Certification: CE, patent, ISO
- Model Number: SSB085
- Minimum Order Quantity: 1 set / piece
- Price: USD 199.00-USD19999.00
- Packaging Details: bubble / wooden cases/ others as you request
- Delivery Time: 5-20/works
- Payment Terms: T/T, L/C
- Supply Ability: 5 sets per week



### Product Specification

- Material: BS900E, Lighter And Stronger
- Maintanment: Easy Maintanment
- Efficiency: High Efficiency
- Digging Depth(m): 18m 20m 25m 30m 32m
- Cylinder: High Quality Cylinder
- Bucket: Clamshell Bucket, 1.5cbm, 2cbm, 2.5cbm
- Highlight: **Digging Telescopic Boom Arm,  
Clamshell Bucket Telescopic Boom Arm,  
Silt Telescopic Boom Arm**



### More Images



for more products please visit us on [excavatorlongarm.com](http://excavatorlongarm.com)

## Product Description

### 25m 30m 32m Excavator Telescopic Boom Arm with Clamshell Bucket with Teeth

#### Introduction of one set excavator telescopic boom arm

The high-quality excavator telescopic boom arm is engineered to deliver exceptional performance and durability in demanding construction environments. This advanced component features precision manufacturing and robust materials, ensuring it can withstand heavy loads and rigorous use. Its telescopic design allows for extended reach and versatility, making it ideal for various applications, from deep excavation to precise material handling. Enhanced hydraulic systems facilitate smooth operation, providing operators with the control and responsiveness needed for intricate tasks. With a focus on reliability and efficiency, this telescopic boom arm stands out as a vital addition to any excavation fleet, ensuring optimal productivity on the job site.

**Suitable excavators for telescopic dipper :** Sany, hitachi, komatsu, zoomlion, kobelco, etc

#### Specification detail of one set of telescopic dipper

Digging Depth(m)	Excavator Model(ton)	Clamshell Bucket(cbm)
12	20-25T	0.6
14		0.4
16		0.4
18		0.4
20	26-28	0.6
20-22m	30-33T	1.5cbm
	35-38T	
	30-33T	
	35-38T	
25m	35-38T	2.2cbm
	40-50T	
26-30m	36-50T	1.5cbm
		1.5cbm
		2cbm
		2cbm
		2.2cbm
		2.2cbm
31-32m	40-50T	2.2cbm
		2.5cbm

Welcome to send your excavator model to us for double check. Suitable length and model drawing will be sent soon.





Excavator telescopic arm china hitachi's Production Details:

- \* **High Precision** make sure the telescopic dipper for excavator is installed on the excavator suitably
- \* **Premium material** make the telescopic arrow for excavator work high efficiency
- \* **Excellent design** make the telescopic arm work stably and high efficiency

Production Details of Three-section telescopic arm

Premium Material---**BS900E** lighter and stronger

The materials: steel, cylinders, etc are all stored well and keep away from moisture and corrosion



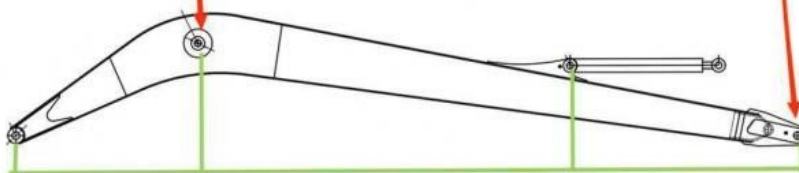




## Double-sided boring lathe



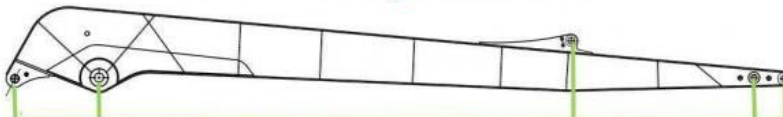
After the excavator boom and arm are assembled, the pins on the boom are drilled to ensure that the pins on the boom are parallel to each other and the cross section of the pin hole is perpendicular to the pin. The double-sided boring machine of the boom makes the hole position more accurate and the quality higher.



Make sure the cross section of the pin hole is perpendicular to the shaft.



Make sure the axis is parallel to the axis



Make sure the cross section of the pin hole is perpendicular to the shaft



Make sure the axis is parallel to the axis



Premium Welding Wire  
Jinqiao Welding Wire

Certifications of telescopic arm:

#### 4. Certifications



Kaiping Zhonghe Machinery's introduction:

# Introduction of Kaiping Zhonghe Machinery



## OUR CUSTOMERS

Our products are stable used in Australia, New Zealand, Norway, Sweden, USA, Canada, Austria, Ireland, Britain, Malaysia, Philippines, Mauritius, Russian, Korea, Ecuador, China, etc.



18000M<sup>2</sup> Steel Structure Workshop with Super Precision Machines

30 senior Designers

- ① Full Experienced
- ② Professional
- ③ Honest
- ④ Consumer-centric
- ⑤ Premium Products

Contact Details of telescopic arm:

Kaiping Zhonghe Machinery is a big Manufacturer of Excavator Arms and Booms

Welcome to contact for a big discount!

Whatsapp: [wa.me/+8613822325403](https://wa.me/+8613822325403)

Email: [aria@excavatorboomarm.com](mailto:aria@excavatorboomarm.com)

13822325403@163.com

Website link: [www.excavatorlongarm.com](http://www.excavatorlongarm.com)

manufacturer excavatorlongarm longreachboomexcavator



**Jiangmen Kaiping Zhonghe Machinery Manufacturing Co., Ltd**



+86 13822325403



[aria@excavatorboomarm.com](mailto:aria@excavatorboomarm.com)



[excavatorlongarm.com](http://excavatorlongarm.com)

9 Huancui West Road, Cuishanhu New Area, Kaiping City, Guangdong Province, China