



Telescopic Dipper Arm With Clamshell Bucket With Teeth Use BS900E

Our Product Introduction

for more products please visit us on excavatorlongarm.com

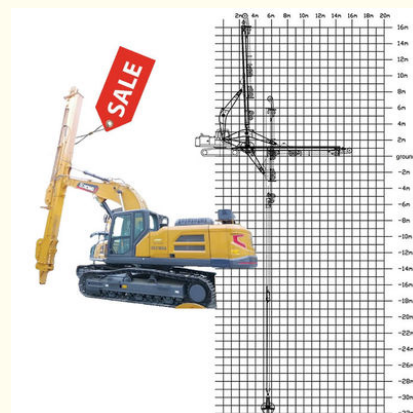
Basic Information

- Place of Origin: China, Guangdong Province
- Brand Name: Kaiping Zhonghe Machinery Manufacturing Co. Ltd
- Certification: CE, patent, ISO
- Model Number: SSB081
- Minimum Order Quantity: 1 set / piece
- Price: USD 199.00-USD19999.00
- Packaging Details: bubble / wooden cases/ others as you request
- Delivery Time: 5-20/works
- Payment Terms: T/T, L/C
- Supply Ability: 5 sets per week



Product Specification

- Material: BS900E, Lighter And Stronger
- Digging Depth(m): 18m 20m 25m 30m 32m
- Maintenance: Easy Maintenance
- Efficiency: High Efficiency
- Bucket: Clamshell Bucket
- Cylinder: High Quality Cylinder
- Highlight: **Teeth Telescopic Dipper Arm,
Clamshell Bucket Telescopic Dipper Arm,
Telescopic Dipper Arm**



More Images



Product Description

25m 30m 32m Excavator Telescopic Arm with Clamshell Bucket with Teeth

Introduction of one set excavator telescopic arm:

The excavator telescopic arm is a cutting-edge piece of equipment designed to enhance the versatility and efficiency of excavation and construction tasks. This innovative arm features multiple extendable segments that allow for increased reach and depth, making it ideal for a variety of applications, from digging trenches to lifting heavy materials in tight spaces. Its hydraulic system provides smooth and precise movement, ensuring operators can maneuver the arm with ease and accuracy. With robust construction and advanced technology, the telescopic arm not only improves productivity but also enhances safety on the job site, making it an invaluable asset for modern excavation projects.

Suitable excavators: Sany, hitachi, komatsu, zoomlion, kobelco, etc

Specification detail of one set of telescopic arm for excavator:

Digging Depth(m)	Excavator Model(ton)	Clamshell Bucket(cbm)
12	20-25T	0.6
14		0.4
16		0.4
18		0.4
20	26-28	0.6
20-22m	30-33T	1.5cbm
	35-38T	
	30-33T	
	35-38T	
25m	35-38T	2.2cbm
	40-50T	
26-30m	36-50T	1.5cbm
		1.5cbm
		2cbm
		2cbm
		2.2cbm
		2.2cbm
	40-50T	2.2cbm
31-32m	40-50T	2.2cbm
		2.5cbm

Welcome to send your excavator model to us for double check. Suitable length and model drawing will be sent soon.



Telescopic arm excavator's Production Details:

- * High Precision make sure the excavator telescopic boom is installed on the excavator suitably
- * Premium material make the excavator telescope work high efficiency
- * Excellent design make the telescopic crawler excavator work stably and high efficiency

Production Details of Three-section telescopic arm

Premium Material---**BS900E** lighter and stronger

The materials: steel, cylinders, etc are all stored well and keep away from moisture and corrosion

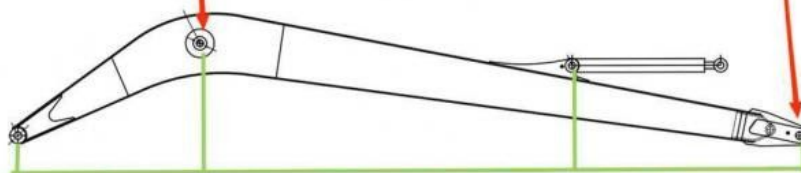




Double-sided boring lathe



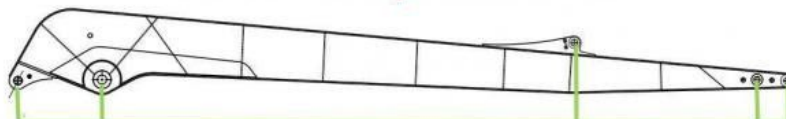
After the excavator boom and arm are assembled, the pins on the boom are drilled to ensure that the pins on the boom are parallel to each other and the cross section of the pin hole is perpendicular to the pin. The double-sided boring machine of the boom makes the hole position more accurate and the quality higher.



Make sure the cross section of the pin hole is perpendicular to the shaft.



Make sure the axis is parallel to the axis



Make sure the cross section of the pin hole is perpendicular to the shaft



Make sure the axis is parallel to the axis



Premium Welding Wire
Jinqiao Welding Wire

Certifications of excavator section telescopic arm:

4. Certifications



Kaiping Zhonghe Machinery's introduction:

Introduction of Kaiping Zhonghe Machinery



18000M² Steel Structure Workshop with Super Precision Machines

30 senior Designers

- ① Full Experienced
- ② Professional
- ③ Honest
- ④ Consumer-centric
- ⑤ Premium Products

Contact Details:

Kaiping Zhonghe Machinery is a big Manufacturer of Excavator Arms and Booms

Welcome to contact for a big discount!

Whatsapp: wa.me/+8613822325403

Email: aria@excavatorboomarm.com

13822325403@163.com

Website link: www.excavatorlongarm.com

manufacturer excavatorlongarm longreachboomexcavator



Jiangmen Kaiping Zhonghe Machinery Manufacturing Co., Ltd

+86 13822325403

aria@excavatorboomarm.com

excavatorlongarm.com

9 Huancui West Road, Cuishanhu New Area, Kaiping City, Guangdong Province, China