



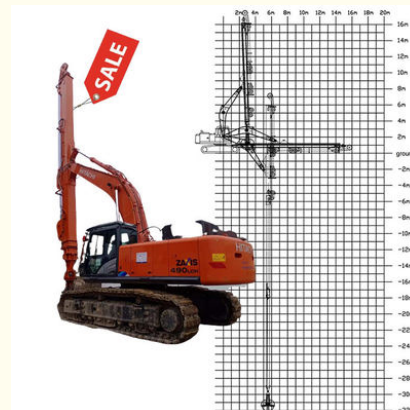
20m 25m Telescopic Dipper Arm With Clamshell Bucket Grapple Clamshell Telescopic Arm

Our Product Introduction

for more products please visit us on excavatorlongarm.com

Basic Information

- Place of Origin: Guangdong Province, China
- Brand Name: Kaiping Zhonghe Machinery Manufacturing Co. Ltd
- Certification: CE, patent, ISO
- Model Number: SSB0012
- Minimum Order Quantity: 1 set / piece
- Price: USD 119.00-USD9999.00
- Packaging Details: bubble / wooden cases / others as you request
- Delivery Time: 5-20/works
- Payment Terms: T/T, L/C or others as you request
- Supply Ability: 5 sets per week



Product Specification

- Digging Depth: 18m 20m 25m 30m 32m
- Welding: Premium Welding, Not Easy Cracking
- Suitable Excavators: Hitachi Komatsu Sany Zoomlion Etc
- Design: Work Smoothly High Effective Design, Safe And Stable, Telescopic Long Reach
- Cylinders: High Quality Cylinders, Longer Service Life-span
- Material: BS900E, Lighter And Stronger
- Highlight: 25m Telescopic Dipper Arm, Clamshell Telescopic Dipper Arm, 20m Telescopic Dipper Arm



More Images



Product Description

Digging Foundation Pit Telescopic Dipper Arm with Clamshell Bucket Long Reach

Suitable working condition of clamshell telescopic arm excavator:

Digging depth can reach 20m 25m 28m 30m 32m etc

Digging house foundation, foundation pit, narrow places etc. Work high effective, Long Reach, Telescopic, etc

Specification of one set clamshell telescopic arm excavator:

Excavator (ton)	Max Depth (mm)	Effective Length (mm)	Bucket Capacity (cbm)
6-10	10000	7600	0.2-0.3
11-15	14000	10500	0.4-0.6
20-30	16000	12500	0.8-1.5
30-35	20000	15500	1.3-1.66
30-35	25000	20500	1-1.4
40-45	25000	20500	1.8-2.5
40-45	30000	25100	1.4-2

Welcome to send your excavator model to us for recommending suitable length. Whatsapp: [86 13822325403](https://wa.me/8613822325403)



Key word of clamshell telescopic arm excavator:

telescopic excavator
excavator telescopic
telescopic boom arm
telescopic dipper arm
excavator telescopic arm dipper stick 28m
excavator telescopic boom arm
hitachi excavator telescopic boom
telescopic dipper
excavator telescopic arm china hitachi
telescopic dipper for excavator

More details of our clamshell telescopic arm excavator:

* Clamshell bucket * Telescopic arm * Pins *Hoses



Production of our clamshell telescopic arm excavator:
***Standard * Professional *Experienced *Strict**

Panel is cut by CNC
 plasma machine with
 less deformation





Large floor-standing
double-sided boring
machine
Higher accuracy



Beveling Machine
Every board will be
beveled before being
welded which enhances
the weld bead

The creation of the telescopic arm excavator is guided by a meticulous process that emphasizes quality and durability. We begin with the careful selection of superior materials, including high-strength steel and advanced hydraulic systems, to achieve outstanding performance and longevity. During the manufacturing stage, we implement precise machining and welding techniques, alongside rigorous quality control protocols to meet industry standards. Our innovative design approaches focus on optimizing the reach and lifting capacity of the telescopic arm while ensuring it maintains balance and stability throughout its operation.

Clamshell Telescopic Arm Excavator's premium material:

* BS900E(high strength, lighter and stronger)

① Premium Material---**Q355NE / Q355B / Q690D**

The materials: steel material, cylinders, sleeves etc are all stored well and keep away from moisture and corrosion

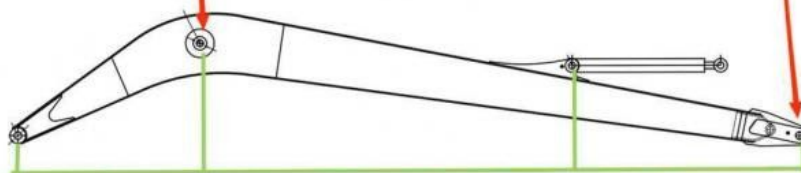




Double-sided boring lathe



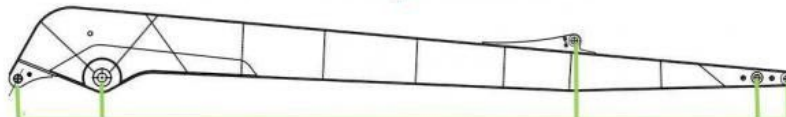
After the excavator boom and arm are assembled, the pins on the boom are drilled to ensure that the pins on the boom are parallel to each other and the cross section of the pin hole is perpendicular to the pin. The double-sided boring machine of the boom makes the hole position more accurate and the quality higher.



Make sure the cross section of the pin hole is perpendicular to the shaft.



Make sure the axis is parallel to the axis



Make sure the cross section of the pin hole is perpendicular to the shaft



Make sure the axis is parallel to the axis

Examples of our clamshell telescopic arm excavator:



Cleaning and dredging



Telescopic arm test



Bridge construction projects



Deep pit work



For Deep foundation pit construction project



For unloading materials

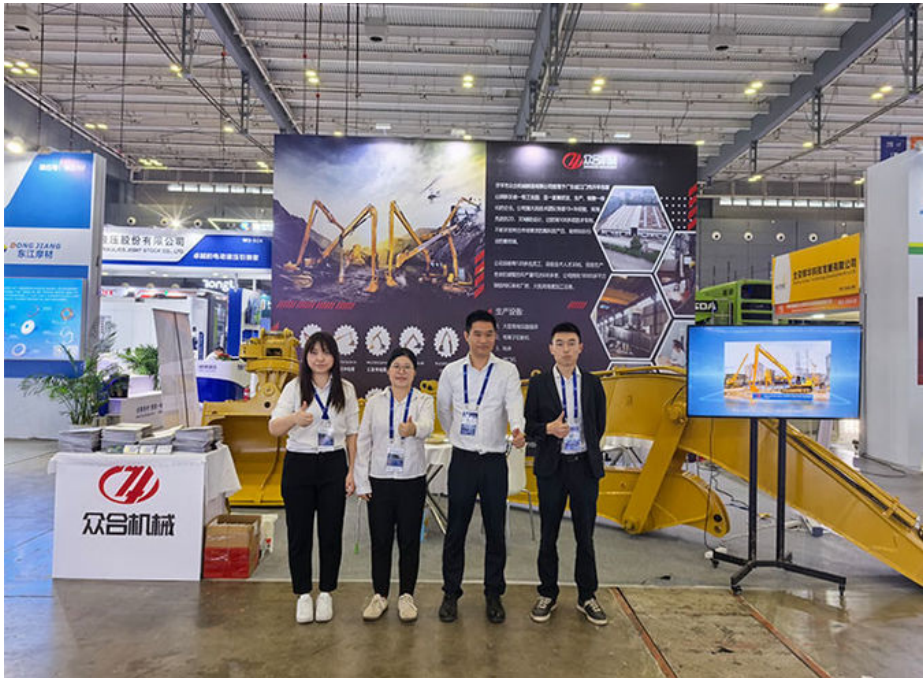


For Large-scale earthworks



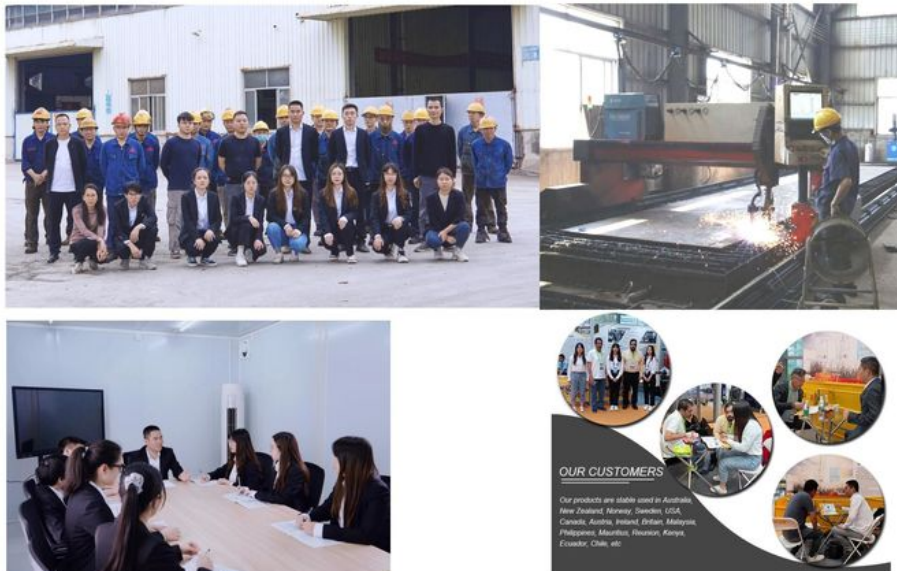
Feedback of 18m three-section telescopic arm for Cat 320
 Clients mentioned that the arm works very good.
 High effective and save energy

Exhibition We Attended:





Introduction of Kaiping Zhonghe Machinery



4. Certifications



Other Top Picks Clamshell Telescopic Arm Excavator:

Key word of excavator arm and boom: excavator long reach arm, excavator arm and boom, telescopic arm, demolition arm, sliding arm, pile arm pile boom etc



Sliding Arm



Long Arm Long Boom



Telescopic Arm



Tunnel Arm / Shorten Arm



Kaiping Zhonghe Machinery is a big Manufacturer of Excavator Long Reach Arm:

Key word of our telescopic excavator arm boom excavator long reach arm:

telescopic excavator
excavator telescopic
telescopic boom arm
telescopic dipper arm
excavator telescopic arm dipper stick 28m
excavator telescopic boom arm
hitachi excavator telescopic boom
telescopic dipper
excavator telescopic arm china hitachi
telescopic dipper for excavator

Welcome to contact for a big discount!

Whatsapp: wa.me/+8613822325403

Email: aria@excavatorboomarm.com
13822325403@163.com

Website link: www.excavatorlongarm.com

manufacturer excavatorlongarm longreachboomexcavator



Jiangmen Kaiping Zhonghe Machinery Manufacturing Co., Ltd



+86 13822325403



aria@excavatorboomarm.com



excavatorlongarm.com

9 Huancui West Road, Cuishanhu New Area, Kaiping City, Guangdong Province, China