



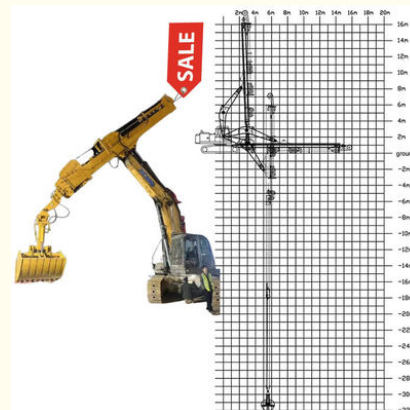
30m 32m Telescopic Dipper Arm With Clamshell Bucket Grapple

Our Product Introduction

for more products please visit us on excavatorlongarm.com

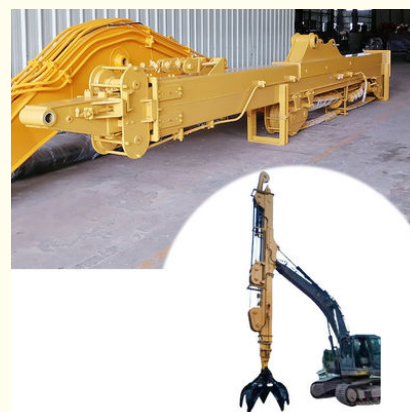
Basic Information

- Place of Origin: Guangdong Province, China
- Brand Name: Kaiping Zhonghe Machinery
- Certification: CE, patent, ISO
- Model Number: SSB006
- Minimum Order Quantity: 1 set / piece
- Price: USD 119.00-USD9999.00
- Packaging Details: bubble / wooden cases / others as you request
- Delivery Time: 5-20/works
- Payment Terms: T/T, L/C or others as you request
- Supply Ability: 5 sets per week



Product Specification

- Welding: Premium Welding, Not Easy Cracking
- Digging Depth: 18m 20m 25m 30m 32m
- Design: Work Smoothly High Effective Design, Safe And Stable, Telescopic Long Reach
- Suitable Excavators: Hitachi Komatsu Sany Etc
- Cylinders: High Quality Cylinders
- Material: BS900E, Lighter And Stronger
- Highlight: **30m Telescopic Dipper Arm,
32m Telescopic Dipper Arm,
Clamshell Bucket Telescopic Dipper Arm**



More Images



Product Description

Digging Foundation Pit Telescopic Dipper Arm with Clamshell Bucket Long Reach

Suitable working condition of excavator telescopic arm dipper stick 28m:

Digging depth can reach 28m

Digging house foundation, foundation pit, narrow places etc. Work high effective, stably, smoothly

Specification of one set excavator telescopic arm dipper stick 28m:

The one set excavator telescopic arm dipper stick, with an impressive reach of 28 meters, is engineered for exceptional performance and versatility in various excavation tasks. Constructed from high-strength steel, this dipper stick is designed to withstand rigorous conditions while maintaining structural integrity. The hydraulic system of telescopic dipper allows for smooth extension and retraction, enabling operators to access hard-to-reach areas with ease. The innovative design of telescopic dipper maximizes both lifting capacity and operational efficiency, making excavator telescopic arm china hitachian invaluable asset for large-scale construction and earthmoving projects. With meticulous attention to detail, this excavator telescopic dipper stick ensures reliability and effectiveness in demanding environments.

Excavator (ton)	Max Depth (mm)	Effective Length (mm)	Bucket Capacity (cbm)
6-10	10000	7600	0.2-0.3
11-15	14000	10500	0.4-0.6
20-30	16000	12500	0.8-1.5
30-35	20000	15500	1.3-1.66
30-35	25000	20500	1-1.4
40-45	25000	20500	1.8-2.5
40-45	30000	25100	1.4-2

Welcome to send your excavator model to us for recommending suitable length. Whatsapp: [86 13822325403](https://wa.me/8613822325403)

Key word of telescopic dipper for excavator:

telescopic excavator
excavator telescopic
telescopic boom arm
telescopic dipper arm
excavator telescopic arm dipper stick 28m
excavator telescopic boom arm
hitachi excavator telescopic boom
telescopic dipper
excavator telescopic arm china hitachi
telescopic dipper for excavator

More details of our telescopic dipper for excavator:





Production of our telescopic dipper for excavator:
*** Professional *Experienced *Strict *Standard**

Panel is cut by CNC
 plasma machine with
 less deformation



Large floor-standing
 double-sided boring
 machine
 Higher accuracy



Beveling Machine
Every board will be beveled before being welded which enhances the weld bead

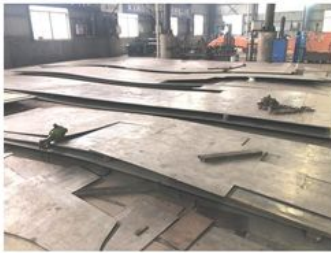
The development of the telescopic arm excavator follows a rigorous process that prioritizes quality and durability. We start by selecting top-tier materials, such as high-strength steel and sophisticated hydraulic systems, to ensure exceptional performance and extended lifespan. Throughout the manufacturing phase, we utilize precise machining and welding methods, complemented by stringent quality control measures to ensure compliance with industry standards. Our innovative design strategies for the telescopic arm aim to enhance both its reach and lifting capacity while ensuring that the arm remains balanced and stable during operation.

Telescopic dipper for excavator 's premium material:

* BS900E

① Premium Material---**Q355NE / Q355B / Q690D**

The materials: steel material, cylinders, sleeves etc are all stored well and keep away from moisture and corrosion

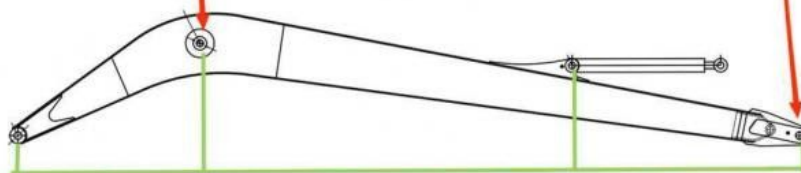




Double-sided boring lathe



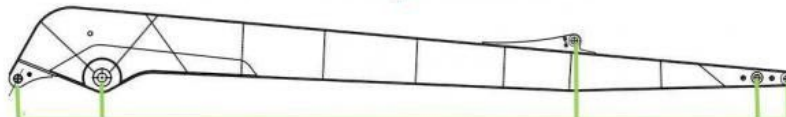
After the excavator boom and arm are assembled, the pins on the boom are drilled to ensure that the pins on the boom are parallel to each other and the cross section of the pin hole is perpendicular to the pin. The double-sided boring machine of the boom makes the hole position more accurate and the quality higher.



Make sure the cross section of the pin hole is perpendicular to the shaft.



Make sure the axis is parallel to the axis



Make sure the cross section of the pin hole is perpendicular to the shaft



Make sure the axis is parallel to the axis

Examples of our telescopic dipper for excavator:



Cleaning and dredging



Telescopic arm test



Bridge construction projects



Deep pit work



For Deep foundation pit construction project



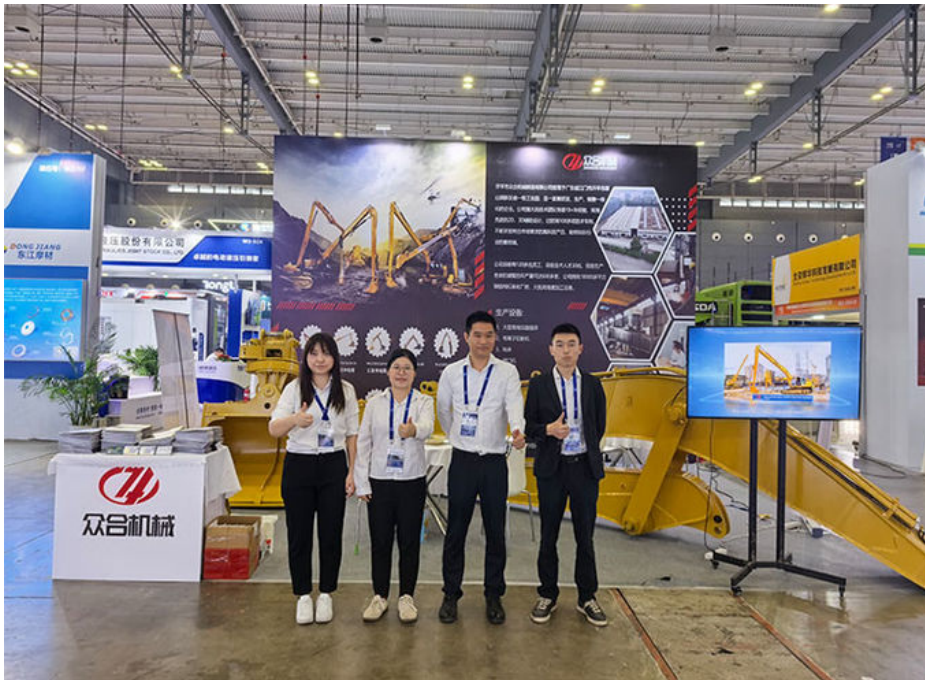
For unloading materials



For Large-scale earthworks

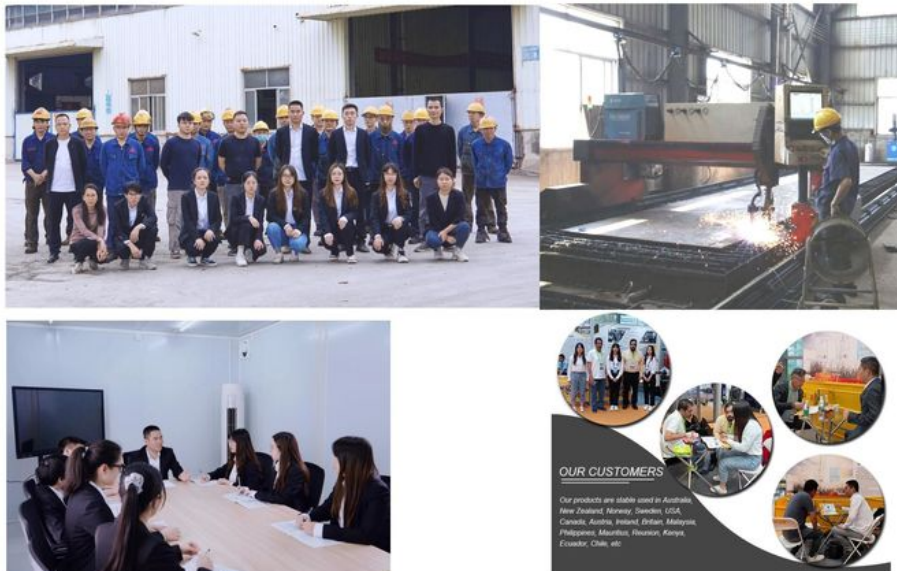


Feedback of 18m three-section telescopic arm for Cat 320
 Clients mentioned that the arm works very good.
 High effective and save energy





Introduction of Kaiping Zhonghe Machinery



4. Certifications



Other Top Picks Excavator long reach arm long reach boom:

Key word: excavator arm and boom, excavator long reach arm, telescopic arm, demolition arm, sliding arm, pile arm pile boom etc



Sliding Arm



Long Arm Long Boom



Telescopic Arm



Tunnel Arm / Shorten Arm



Kaiping Zhonghe Machinery is a big Manufacturer of Excavator Long Arm Long Boom:

Key word of our telescopic excavator arm boom:

telescopic excavator
excavator telescopic
telescopic boom arm
telescopic dipper arm
excavator telescopic arm dipper stick 28m
excavator telescopic boom arm
hitachi excavator telescopic boom
telescopic dipper
excavator telescopic arm china hitachi
telescopic dipper for excavator

Welcome to contact for a big discount!

Whatsapp: wa.me/+8613822325403

Email: aria@excavatorboomarm.com
13822325403@163.com

Website link: www.excavatorlongarm.com

manufacturer excavatorlongarm longreachboomexcavator



Jiangmen Kaiping Zhonghe Machinery Manufacturing Co., Ltd



+86 13822325403



aria@excavatorboomarm.com



excavatorlongarm.com

9 Huancui West Road, Cuishanhu New Area, Kaiping City, Guangdong Province, China