



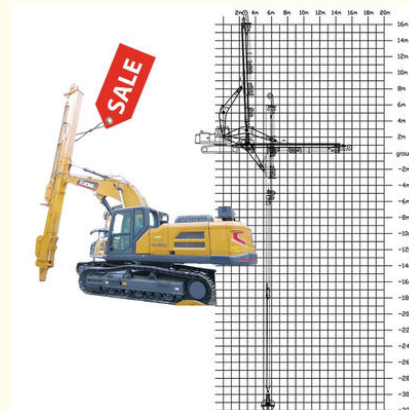
Telescopic Dipper Arm Use BS900E Better Welding Wire Long Reach

Our Product Introduction

for more products please visit us on excavatorlongarm.com

Basic Information

- Place of Origin: Guangdong Province, China
- Brand Name: Kaiping Zhonghe Machinery Manufacturing Co. Ltd
- Certification: CE, patent, ISO
- Model Number: SSB0012
- Minimum Order Quantity: 1 set / piece
- Price: USD 119.00-USD16999.00
- Packaging Details: bubble / wooden cases / others as you request
- Delivery Time: 5-20/works
- Payment Terms: T/T, L/C
- Supply Ability: 5 sets per week

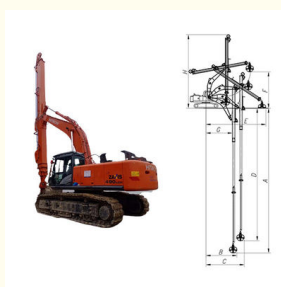


Product Specification

- Design: High Effective Design, Safe And Stable
- Digging Depth: 18m 20m 25m 30m 32m
- Material: BS900E, Lighter And Stronger
- Suitable Excavators: Hitachi Komatsu Sany Zoomlion Etc
- Cylinders: High Quality Cylinders, Longer Service Life-span
- Welding: Premium Welding, No Oil Leakage
- Highlight: **Long Reach Telescopic Dipper Arm, Better Welding Wire Telescopic Dipper Arm, Telescopic style Dipper Arm**



More Images



Product Description

Lighter Stronger Telescopic Dipper Arm with Clamshell Bucket / Grapple

One set of our telescopic dipper arm include:

* One premium telescopic arm * One Clamshell Bucket * Pins * High pressure hoses

Suitable for various excavators:

*Sany hitachi komatsu zoomlion kobelco etc



Specification of one set telescopic dipper arm telescopic excavator:

Suitable Excavator (ton)	Max Digging Depth (mm)	Effective Length (mm)	Clamshell Bucket Capacity (cbm)
6-10	10000	7600	0.2-0.3
11-15	14000	10500	0.4-0.6
20-30	16000	12500	0.8-1.5
30-35	20000	15500	1.3-1.66
30-35	25000	20500	1-1.4
40-45	25000	20500	1.8-2.5
40-45	30000	25100	1.4-2

Welcome to send your excavator model to us for recommending suitable length. Whatsapp: [+86 13822325403](https://wa.me/8613822325403)



More details of our excavator telescopic dipper arm:





Production of our telescopic dipper arm:

The production of our excavator clamshell telescopic boom is defined by a meticulous approach that emphasizes strength and efficiency. Each telescopic boom for excavator begins with the careful selection of premium materials engineered to endure demanding operational conditions. The manufacturing process of telescopic dipper arm employs advanced techniques, including precision fabrication and robust welding, ensuring that every component of the hydraulic telescoping boom adheres to rigorous performance standards. After assembly, the telescopic dipper arm undergoes comprehensive testing to validate its functionality and durability. This rigorous attention to detail not only enhances the operational capabilities of the hydraulic telescoping excavator boom but also guarantees its reliability across a diverse range of excavation tasks, establishing telescopic dipper arm as an essential tool for any construction project.

Panel is cut by CNC
plasma machine with
less deformation



Large floor-standing
double-sided boring
machine
Higher accuracy



Beveling Machine
Every board will be
beveled before being
welded which enhances
the weld bead

The Telescopic Dipper Arm Using High Quality Materials:

- * high quality connectors: make sure the telescopic dipper arm not easy oil leakage
- * premium welding wires: make sure the telescopic dipper arm not easy cracking
- * excellent BS900E material: make sure the telescopic dipper arm lighter and stronger, high effective, work stably and smoothly



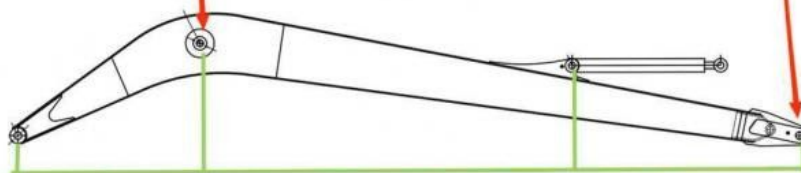
Premium Welding Wire
Jinqiao Welding Wire



Double-sided boring lathe



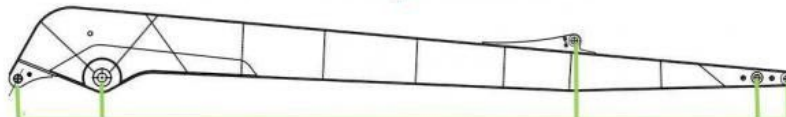
After the excavator boom and arm are assembled, the pins on the boom are drilled to ensure that the pins on the boom are parallel to each other and the cross section of the pin hole is perpendicular to the pin. The double-sided boring machine of the boom makes the hole position more accurate and the quality higher.



Make sure the cross section of the pin hole is perpendicular to the shaft.



Make sure the axis is parallel to the axis



Make sure the cross section of the pin hole is perpendicular to the shaft



Make sure the axis is parallel to the axis

Examples of our telescopic dipper arm:



Cleaning and dredging



Telescopic arm test



Bridge construction projects



Deep pit work



For Deep foundation pit construction project



For unloading materials

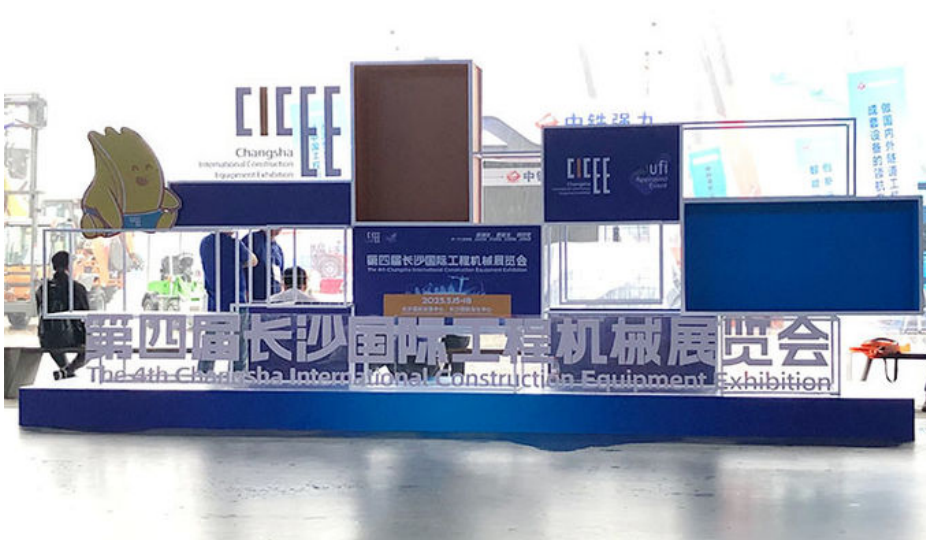


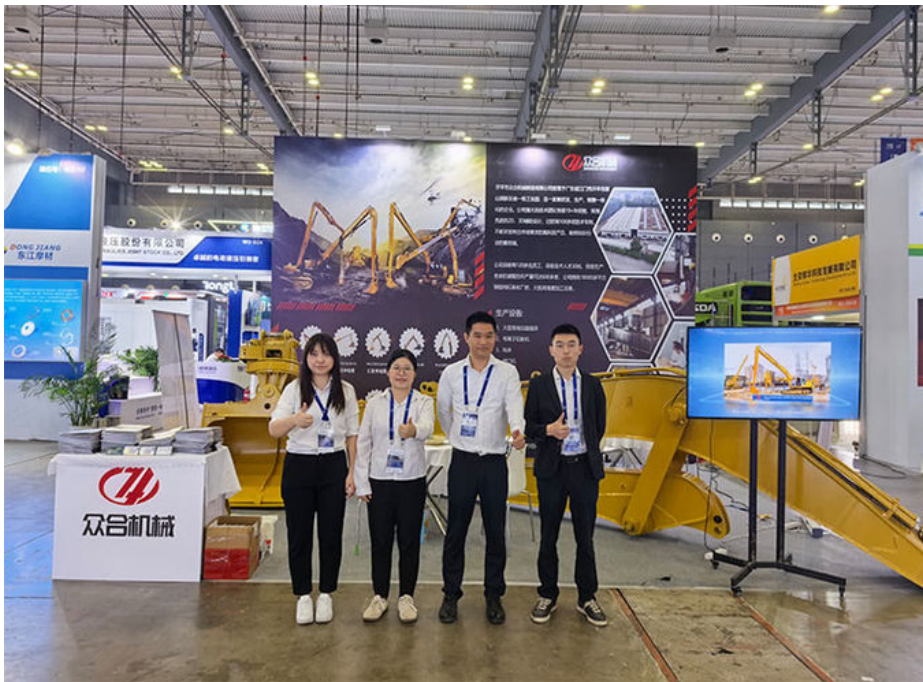
For Large-scale earthworks



Feedback of 18m three-section telescopic arm for Cat 320
Clients mentioned that the arm works very good.
High effective and save energy

Kaiping Zhonghe Machinery team--experienced & professional & 24hours available: *Attended Bauma 2024 * the 4th CHANGSHA INTERNATIONAL CONSTRUCTION EQUIPMENT EXHIBITION





Kaiping Zhonghe Machinery's factory outlook:



Kaiping Zhonghe Machinery's Certifications:
* Quality guaranteed * Professional *Excellent

4. Certifications



Other Top Picks Excavator long reach arms and booms:

Key word: telescopic arm, excavator long reach arm, demolition arm, sliding arm, pile arm pile boom:



Sliding Arm



Long Arm Long Boom



Telescopic Arm



Tunnel Arm / Shorten Arm



Contact details of Our Sales Manager of Excavator Arms and Booms--Excavator Long reach arm:

Kaiping Zhonghe Machinery is a big Manufacturer of Excavator Arm and Boom:

Welcome to contact for a big discount!

Whatsapp: wa.me/+8613822325403

Email: aria@excavatorboomarm.com

13822325403@163.com

Website link: www.excavatorlongarm.com

manufacturer excavatorlongarm longreachboomexcavator



Jiangmen Kaiping Zhonghe Machinery Manufacturing Co., Ltd



+86 13822325403



aria@excavatorboomarm.com



excavatorlongarm.com

9 Huancui West Road, Cuishanhu New Area, Kaiping City, Guangdong Province, China