

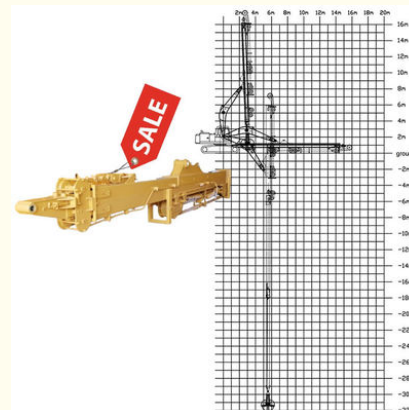


## Excavator Telescopic Arm With Grapple Use BS900E Lighter Stronger

Our Product Introduction

### Basic Information

- Place of Origin: Guangdong Province, China
- Brand Name: Kaiping Zhonghe Machinery Manufacturing Co. Ltd
- Certification: CE, patent, ISO
- Model Number: SSB003
- Minimum Order Quantity: 1 set / piece
- Price: USD 119.00-USD19999.00
- Packaging Details: bubble / wooden cases / others as you request
- Delivery Time: 5-20/works
- Payment Terms: T/T, L/C
- Supply Ability: 5 sets per week



### Product Specification

- Design: High Effective Design, Safe And Stable
- Material: BS900E, Lighter And Stronger
- Welding: Premium Welding, No Oil Leakage
- Digging Depth: 18m 20m 25m 30m 32m
- Suitable Excavators: Hitachi Komatsu Sany Zoomlion Etc
- Cylinders: High Quality Cylinder
- Highlight: **Lighter Telescopic Arm, Excavator Telescopic Arm, Grapple Telescopic Arm**



### More Images



for more products please visit us on [excavatorlongarm.com](http://excavatorlongarm.com)

## Product Description

### BS900E Telescopic Arm Excavator with Clamshell Bucket / Grapple

**One set of our excavator clamshell telescopic boom include:**

\* One telescopic arm \*Clamshell Bucket \*Pins \*High pressure hoses



#### Specification of one set excavator clamshell telescopic boom

Excavator (ton)	Max Depth (mm)	Effective Length (mm)	Clamshell Bucket Capacity (cbm)
6-10	10000	7600	0.2-0.3
11-15	14000	10500	0.4-0.6
20-30	16000	12500	0.8-1.5
30-35	20000	15500	1.3-1.66
30-35	25000	20500	1-1.4
40-45	25000	20500	1.8-2.5
40-45	30000	25100	1.4-2

Welcome to send your excavator model to us for recommending suitable length. Whatsapp: [+86 13822325403](https://wa.me/8613822325403)

**More details of our excavator clamshell telescopic boom:**







#### **Production of our excavator clamshell telescopic boom :**

The production of our excavator clamshell telescopic boom is characterized by a comprehensive approach that prioritizes strength and efficiency. Each telescopic excavator begins with the careful selection of high-quality materials designed to withstand rigorous operational demands. The manufacturing process incorporates advanced techniques such as precision fabrication and robust welding, ensuring that each component of hydraulic telescoping excavator boom meets stringent performance standards. Following assembly, the telescopic excavator undergo extensive testing to verify their functionality and durability. This meticulous attention to detail not only enhances the hydraulic telescoping excavator boom's operational capabilities but also ensures reliability in various excavation tasks, making telescopic excavator a vital tool for any construction project.

Panel is cut by CNC  
plasma machine with  
less deformation





Large floor-standing  
double-sided boring  
machine  
Higher accuracy



Beveling Machine  
Every board will be  
beveled before being  
welded which enhances  
the weld bead

The Telescopic Excavator Using High Quality Materials:



Premium Welding Wire  
Jinqiao Welding Wire

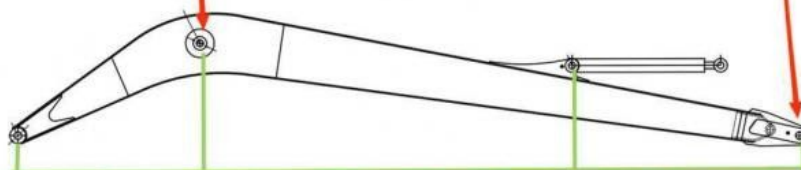




## Double-sided boring lathe



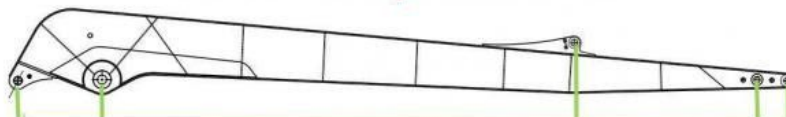
After the excavator boom and arm are assembled, the pins on the boom are drilled to ensure that the pins on the boom are parallel to each other and the cross section of the pin hole is perpendicular to the pin. The double-sided boring machine of the boom makes the hole position more accurate and the quality higher.



Make sure the cross section of the pin hole is perpendicular to the shaft.



Make sure the axis is parallel to the axis



Make sure the cross section of the pin hole is perpendicular to the shaft



Make sure the axis is parallel to the axis

Examples of our hydraulic telescoping excavator boom:





Cleaning and dredging



Telescopic arm test



Bridge construction projects



Deep pit work



For Deep foundation pit construction project



For unloading materials



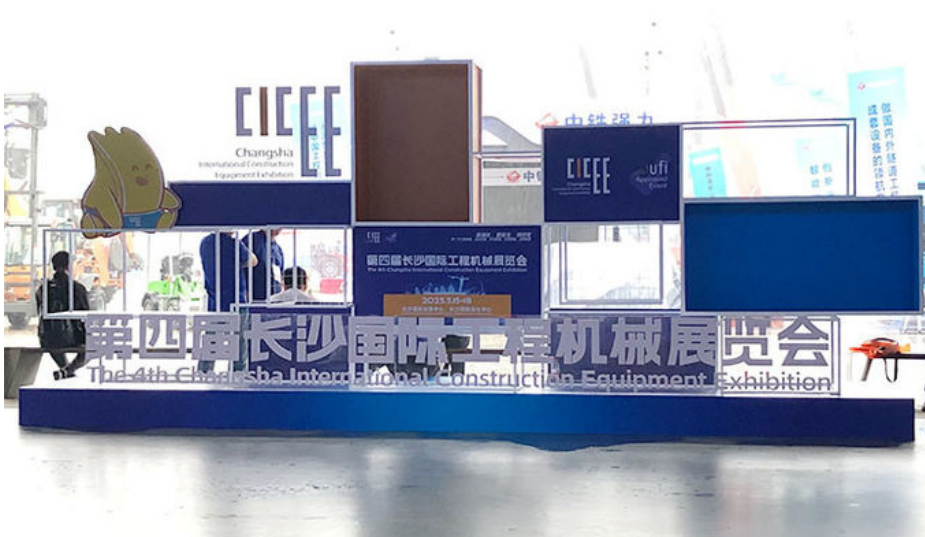
For Large-scale earthworks

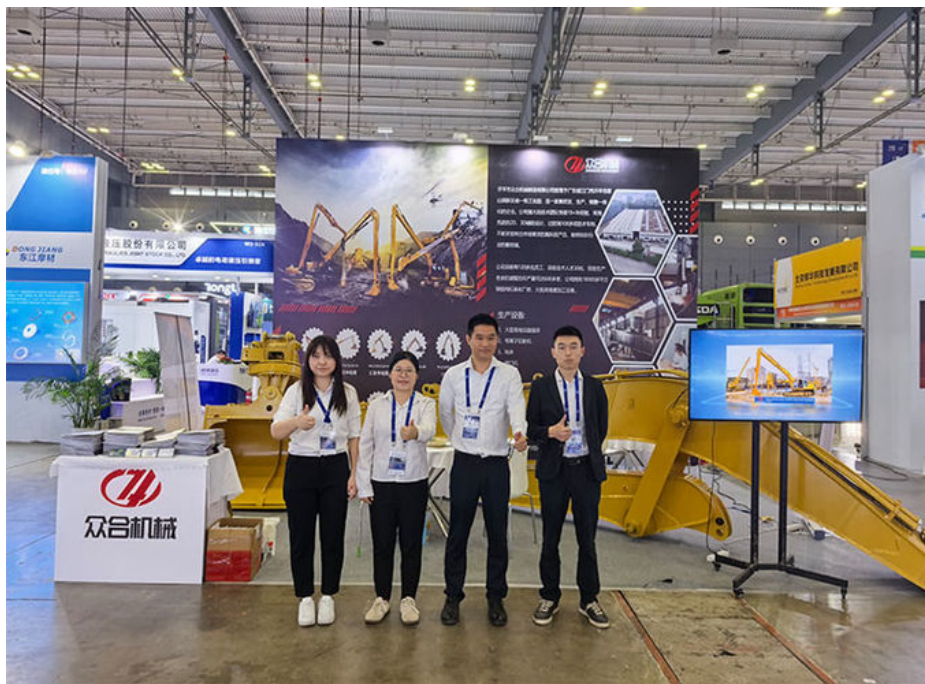


Feedback of 18m three-section telescopic arm for Cat 320  
Clients mentioned that the arm works very good.  
High effective and save energy



Our team--experienced & professional & 24hours available: \*Attended Bauma 2024 \* the 4th CHANGSHA INTERNATIONAL CONSTRUCTION EQUIPMENT EXHIBITION





#### 4. Certifications



**Other Top Picks Excavator arms and booms:**

Key word: excavator long reach arm, telescopic arm, demolition arm, sliding arm, pile arm pile boom:

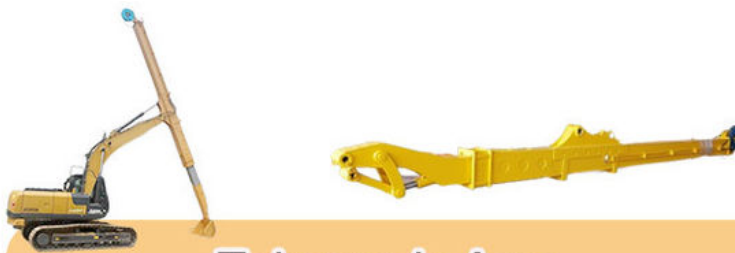




Sliding Arm



Long Arm Long Boom



Telescopic Arm



Tunnel Arm / Shorten Arm



**Contact details of Our Sales Manager of Excavator Arms and Booms:**

**Kaiping Zhonghe Machinery is a big Manufacturer of Excavator Telescopic Arm:**

Welcome to contact for a big discount!

Whatsapp: [wa.me/+8613822325403](https://wa.me/+8613822325403)

Email: [aria@excavatorboomarm.com](mailto:aria@excavatorboomarm.com)

13822325403@163.com

Website link: [www.excavatorlongarm.com](http://www.excavatorlongarm.com)

manufacturer excavatorlongarm longreachboomexcavator



Jiangmen Kaiping Zhonghe Machinery Manufacturing Co., Ltd



+86 13822325403



aria@excavatorboomarm.com



excavatorlongarm.com

9 Huancui West Road, Cuishanhu New Area, Kaiping City, Guangdong Province, China