



Telescopic Arm For Excavator For Grabbing Sand Soil Silt Gravel Use BS900E

Our Product Introduction

for more products please visit us on excavatorlongarm.com

Basic Information

- Place of Origin: Guangdong Province, China
- Brand Name: Kaiping Zhonghe Machinery Manufacturing Co. Ltd
- Certification: CE, patent, ISO
- Model Number: SSB003
- Minimum Order Quantity: 1 set / piece
- Price: USD 119.00-USD12999.00
- Packaging Details: bubble / wooden cases / others as you request
- Delivery Time: 5-20/works
- Payment Terms: T/T, L/C
- Supply Ability: 5 sets per week

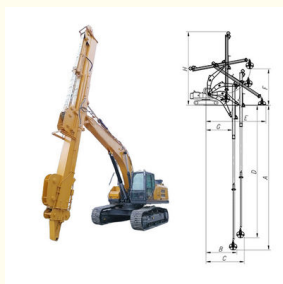


Product Specification

- Welding: Premium Welding
- Cylinder: High Quality Cylinders
- Design: High Effective Design, Safe And Stable
- Digging Depth: 18m 20m 25m 30m 32m
- Material: BS900E, Lighter And Stronger
- Suitable Excavators: Hitachi Komatsu Sany Etc
- Highlight: **Telescopic Arm For Excavator, Excavator Telescopic Arm, Grabbing Sand Telescopic Arm**



More Images



Product Description

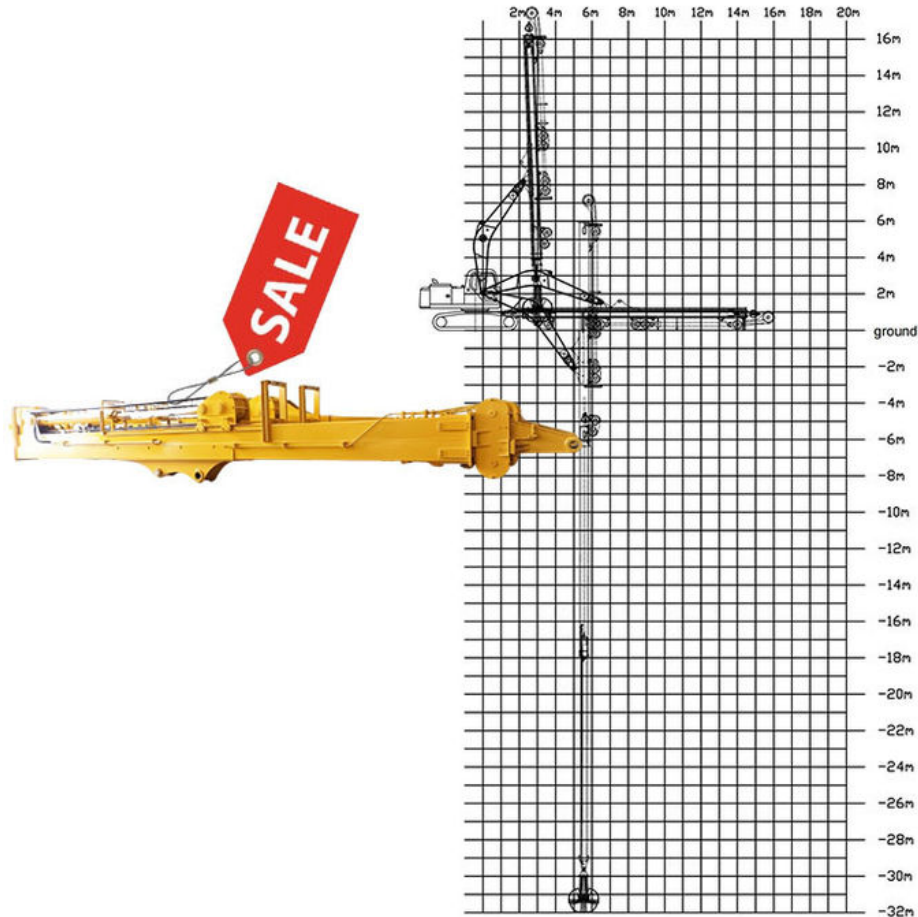
BS900E Telescopic Arm for Excavator for Digging Sand Soil Silt Gravel

Introduction of one set telescopic arm for excavator

The introduction of a one set telescopic arm for excavators represents a significant advancement in construction and excavation technology. Excavator telescope enhances the versatility and reach of traditional excavators, allowing operators to access hard-to-reach areas and perform a wider range of tasks efficiently. The telescopic arm for excavators features multiple extendable segments that can be adjusted to varying lengths, increasing the machine's operational flexibility. Additionally, this system improves productivity by reducing the need for repositioning the excavator, enabling faster maneuvering and more efficient digging, lifting, or material handling. As a result, the one set telescopic arm for excavator is poised to revolutionize how excavators operate on diverse job sites.

Suitable excavators:

Sany, Hitachi, Komatsu, Zoomlion, Kobelco, Sumitomo, etc.



Specification of one set telescopic arm for excavator:

Excavator (ton)	Max Depth (mm)	Effective Length (mm)	Bucket Capacity (cbm)
6-10	10000	7600	0.2-0.3
11-15	14000	10500	0.4-0.6
20-30	16000	12500	0.8-1.5
30-35	20000	15500	1.3-1.66
30-35	25000	20500	1-1.4
40-45	25000	20500	1.8-2.5
40-45	30000	25100	1.4-2

Welcome to send your excavator model to us for recommending suitable length. Whatsapp: [+86 13822325403](https://wa.me/8613822325403)

More details of our Excavator Long Reach Boom And Telescopic Arm



Install on excavators:



Production of our Excavator Long Reach Boom And Telescopic Arm

The production of our telescopic arm excavators follows a detailed and careful process that guarantees exceptional quality and durability. Telescopic excavator starts with the careful selection of top-grade materials, such as high-strength steel and cutting-edge hydraulic components, which significantly improve performance and extend the lifespan of the equipment. The manufacturing process of telescopic arm for excavators involves precision machining and welding, accompanied by thorough quality control assessments to ensure compliance with industry standards. Additionally, innovative design methods are utilized to maximize the excavator arm's reach and lifting capabilities, all while ensuring optimal balance and stability during operation.

Panel is cut by CNC
plasma machine with
less deformation



Large floor-standing
double-sided boring
machine
Higher accuracy



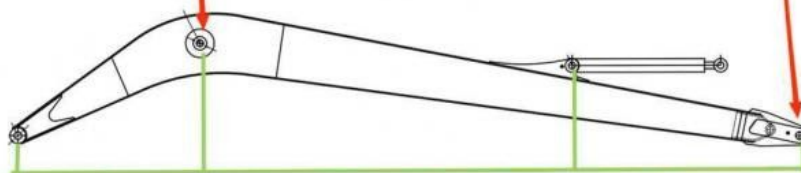
Beveling Machine
Every board will be
beveled before being
welded which enhances
the weld bead



Double-sided boring lathe



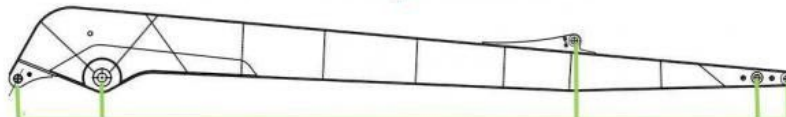
After the excavator boom and arm are assembled, the pins on the boom are drilled to ensure that the pins on the boom are parallel to each other and the cross section of the pin hole is perpendicular to the pin. The double-sided boring machine of the boom makes the hole position more accurate and the quality higher.



Make sure the cross section of the pin hole is perpendicular to the shaft.



Make sure the axis is parallel to the axis



Make sure the cross section of the pin hole is perpendicular to the shaft



Make sure the axis is parallel to the axis

Examples of our Excavator Long Reach Boom And Telescopic Arm



Cleaning and dredging



Telescopic arm test



Bridge construction projects



Deep pit work



For Deep foundation pit construction project



For unloading materials

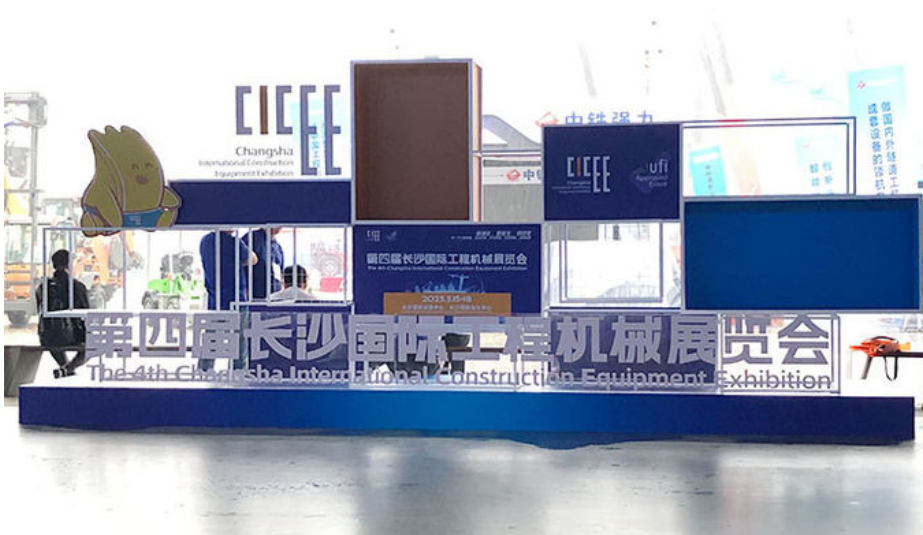
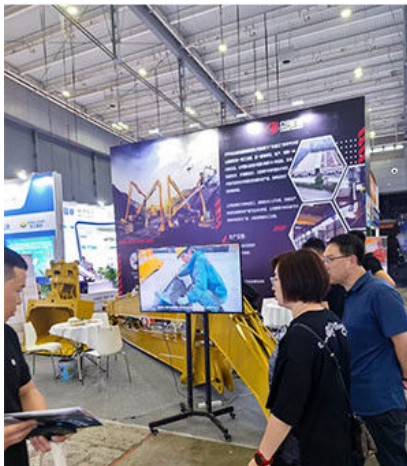


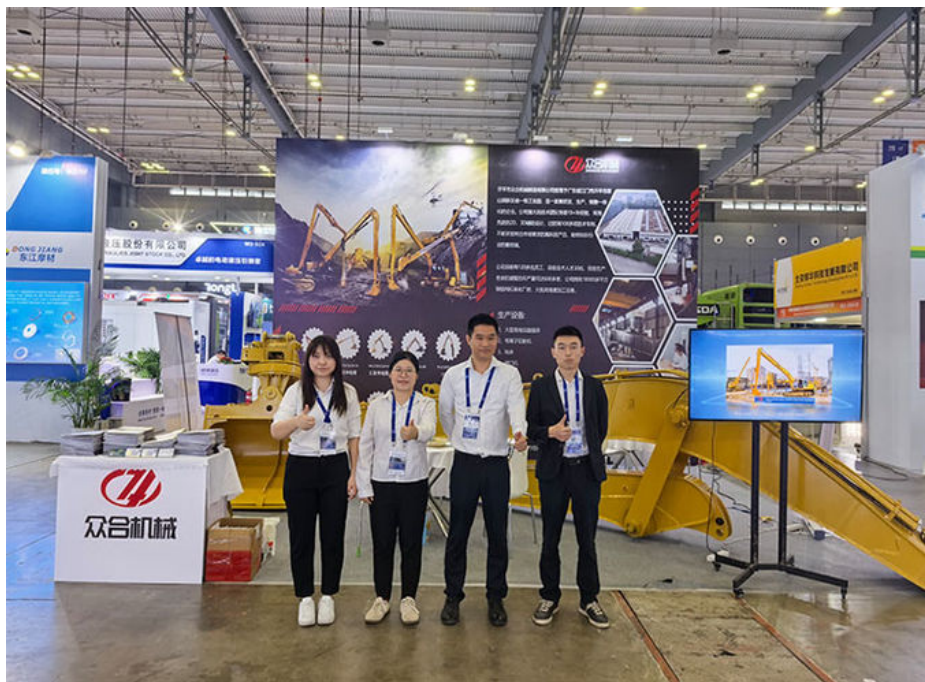
For Large-scale earthworks



Feedback of 18m three-section telescopic arm for Cat 320
 Clients mentioned that the arm works very good.
 High effective and save energy

Kaiping Zhonghe Machinery's Team--professional & 24hours available: *Attended Bauma 2024 * the 4th CHANGSHA INTERNATIONAL CONSTRUCTION EQUIPMENT EXHIBITION





Outlook of our factory:
*** Standard *Professional *Strict**



4. Certifications



Other Top Picks of Excavator Arms and Booms:
 Key word: excavator long reach arm, telescopic arm, demolition arm, sliding arm, pile arm pile boom:



Sliding Arm



Long Arm Long Boom



Telescopic Arm



Tunnel Arm / Shorten Arm



Contact details of Sales Manager of Kaiping Zhonghe Machinery:

Kaiping Zhonghe Machinery is a big Manufacturer of Excavator Arms and Booms

Welcome to contact for a big discount!

Whatsapp: wa.me/+8613822325403

Email: aria@excavatorboomarm.com

13822325403@163.com

Website link: www.excavatorlongarm.com

manufacturer excavatorlongarm longreachboomexcavator



Jiangmen Kaiping Zhonghe Machinery Manufacturing Co., Ltd



+86 13822325403



aria@excavatorboomarm.com



excavatorlongarm.com

9 Huancui West Road, Cuishanhu New Area, Kaiping City, Guangdong Province, China