



Excavator Telescopic Arm With Clamshell Bucket For Digging Foundation

Our Product Introduction

for more products please visit us on excavatorlongarm.com

Basic Information

- Place of Origin: Guangdong Province, China
- Brand Name: Kaiping Zhonghe Machinery Manufacturing Co. Ltd
- Certification: CE, patent, ISO
- Model Number: SSB003
- Minimum Order Quantity: 1 set / piece
- Price: USD 129.00-USD9999.00
- Packaging Details: bubble / wooden cases / others as you request
- Delivery Time: 5-20/works
- Payment Terms: T/T, L/C
- Supply Ability: 5 sets per week



Product Specification

- Material: BS900E, Lighter And Stronger
- Welding: Premium Welding
- Cylinder: High Quality Cylinder
- Design: High Effective Design, Safe And Stable
- Suitable Excavators: Hitachi Komatsu Sany Etc
- Digging Depth: 18m 20m 25m 30m 32m
- Highlight: **Excavator Telescopic Arm,
Digging Foundation Telescopic Arm,
Clamshell Bucket Telescopic Arm**



More Images



Product Description

BS900E Excavator Telescopic Arm with Clamshell Bucket / Grapple

Suitable working condition of excavator telescopic arm:

The suitable construction work for an excavator's telescopic arm involves tasks that leverage its extended reach and versatility. The telescopic arm is particularly effective for tasks like digging deep trenches or foundations, as it can extend to various lengths while maintaining stability. It is also well-suited for landscaping projects, such as moving large boulders or soil, and for demolition work where precision is required. Ensuring that the excavator is operated on stable ground and within its load capacity is crucial for safety and efficiency during these construction activities.

Specification of one set telescopic arm for excavator:

Excavator (ton)	Max Depth (mm)	Effective Length (mm)	Bucket Capacity (cbm)
6-10	10000	7600	0.2-0.3
11-15	14000	10500	0.4-0.6
20-30	16000	12500	0.8-1.5
30-35	20000	15500	1.3-1.66
30-35	25000	20500	1-1.4
40-45	25000	20500	1.8-2.5
40-45	30000	25100	1.4-2

Welcome to send your excavator model to us for recommending suitable length. Whatsapp: +86 13822325403

More details of our telescopic arm excavator:





Production of our telescopic arm excavator:

The production of our telescopic arm excavator involves a meticulous process that ensures high quality and durability. Each excavator telescopic arm begins with the selection of premium materials, including high-strength steel and advanced hydraulic components, to enhance performance and longevity. The manufacturing process includes precision machining and welding, followed by rigorous quality control checks to meet industry standards. Innovative design techniques are employed to optimize the arm's reach and lifting capacity while maintaining balance and stability.

Panel is cut by CNC
plasma machine with
less deformation



Large floor-standing
double-sided boring
machine
Higher accuracy



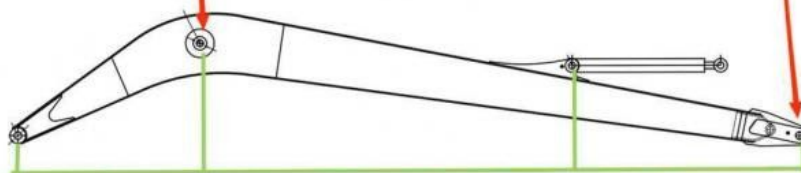
Beveling Machine
Every board will be
beveled before being
welded which enhances
the weld bead



Double-sided boring lathe



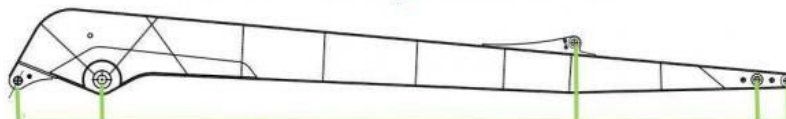
After the excavator boom and arm are assembled, the pins on the boom are drilled to ensure that the pins on the boom are parallel to each other and the cross section of the pin hole is perpendicular to the pin. The double-sided boring machine of the boom makes the hole position more accurate and the quality higher.



Make sure the cross section of the pin hole is perpendicular to the shaft.



Make sure the axis is parallel to the axis



Make sure the cross section of the pin hole is perpendicular to the shaft



Make sure the axis is parallel to the axis

Examples of our telescopic arm excavator:



Cleaning and dredging



Telescopic arm test



Bridge construction projects



Deep pit work



For Deep foundation pit construction project



For unloading materials

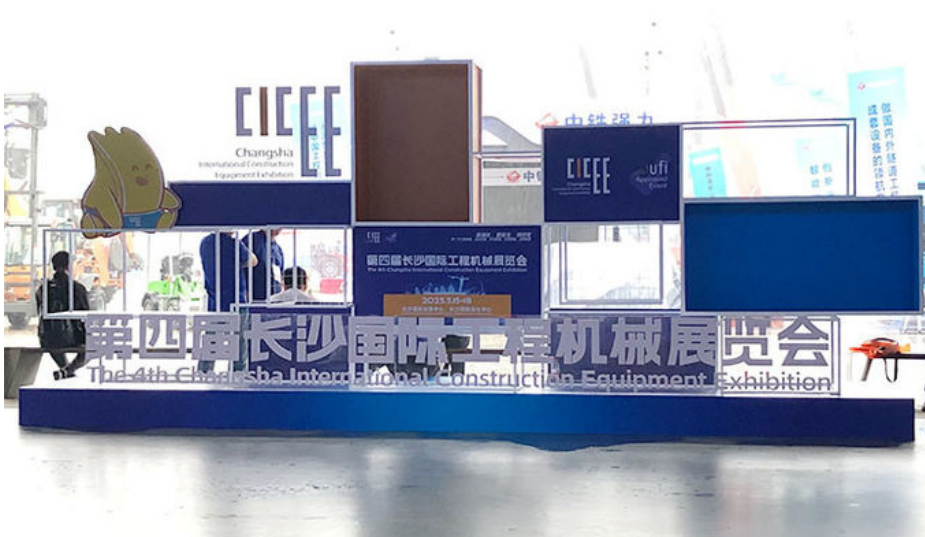


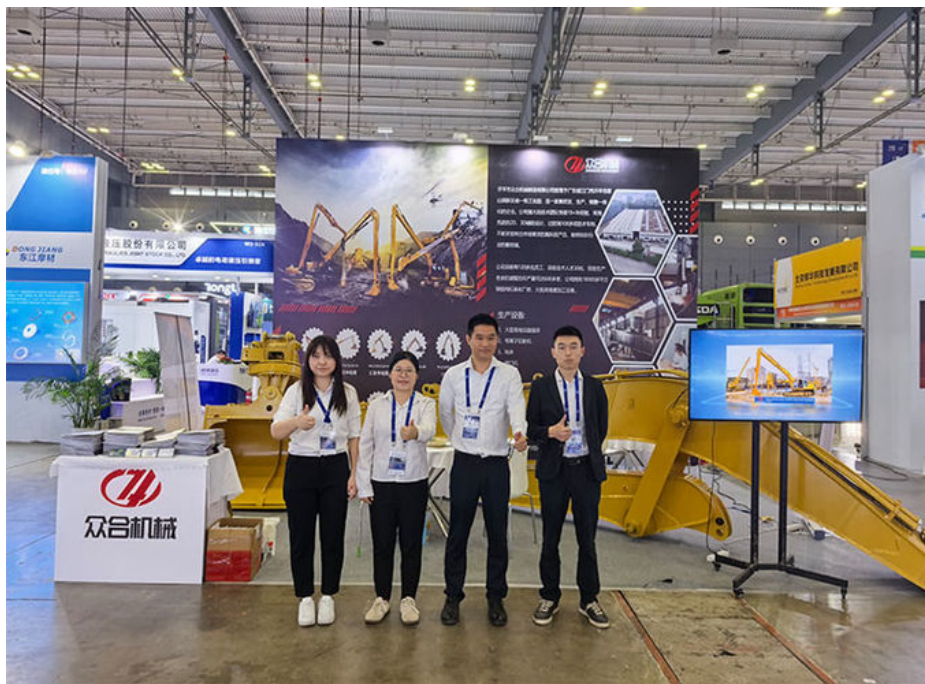
For Large-scale earthworks



Feedback of 18m three-section telescopic arm for Cat 320
Clients mentioned that the arm works very good.
High effective and save energy

Our team--professional & 24hours available: *Attended Bauma 2024 * the 4th CHANGSHA INTERNATIONAL CONSTRUCTION EQUIPMENT EXHIBITION





4. Certifications



Other Top Picks:

Key word: excavator long reach arm, telescopic arm, demolition arm, sliding arm, pile arm pile boom:



Sliding Arm



Long Arm Long Boom



Telescopic Arm



Tunnel Arm / Shorten Arm



Contact details:

Kaiping Zhonghe Machinery is a big Manufacturer of Excavator Arms and Booms

Welcome to contact for a big discount!

Whatsapp: wa.me/+8613822325403

Email: aria@excavatorboomarm.com

13822325403@163.com

Website link: www.excavatorlongarm.com

manufacturer excavatorlongarm longreachboomexcavator



Jiangmen Kaiping Zhonghe Machinery Manufacturing Co., Ltd



+86 13822325403



aria@excavatorboomarm.com



excavatorlongarm.com

9 Huancui West Road, Cuishanhu New Area, Kaiping City, Guangdong Province, China