



## Telescopic Excavator BS900E Wire Rope With Welding Customized Attachments

Our Product Introduction

for more products please visit us on excavatorlongarm.com

### Basic Information

- Place of Origin: Guangdong Province, China
- Brand Name: Kaiping Zhonghe Machinery Manufacturing Co. Ltd
- Certification: CE, patent, ISO
- Model Number: SSB004
- Minimum Order Quantity: 1 set / piece
- Price: USD 119.00-USD8999.00
- Packaging Details: bubble / wooden cases / others as you request
- Delivery Time: 5-15/works
- Payment Terms: T/T, L/C or others as you request
- Supply Ability: 5 sets per week



### Product Specification

- Attachments: Bucket / Clamshell Bucket / Grapple / Customized
- Digging Depth(m): 18m 20m 25m 30m 32m
- Warranty: 6 Months For The Telescopic Arm And Cylinder
- Wire Rope: Good Quality Wire Rope Muti-strand
- Material: BS900E, Lighter And Stronger
- Wedling: Premium Welding
- Highlight: Customized Attachments Telescopic Excavator, Welding Telescopic Excavator, Wire Rope Telescopic Excavator

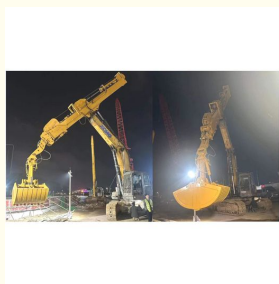
#### 4. Examples

2 sets of 25m three-section telescopic arm



for Dossan 530

### More Images



## Product Description

### BS900E Lighter Stronger sliding dipper boom with Grapple / Clamshell Bucket

#### Instruction of one set of sliding dipper boom:

Suitable for various excavators from 20ton to 55ton excavators.

Digging depth can reach: 18m 20m 25m 30m 32m

**Working condition of one set of sliding dipper boom:** digging house foundation, foundation pit, narrow places, etc.



#### Specification of one set sliding dipper boom:

Digging Depth(m)	Excavator Model(ton)	Bucket Capacity(cbm)
26-30m	36-50T	1.5
		1.5
		2
		2
		2.2
		2.2
	40-50T	2.2
31-32m	40-50T	2.2
		2.5

Welcome to send your excavator model to us for double check. Whatsapp [+86 13822325403](https://wa.me/8613822325403)

#### Production of one set sliding dipper boom:

\* Professional \*High Precision \*High Quality \*High Effective \*Longer service life-span

Panel is cut by CNC  
plasma machine with  
less deformation



Large floor-standing  
double-sided boring  
machine  
Higher accuracy



Beveling Machine  
Every board will be  
beveled before being  
welded which enhances  
the weld bead





Full Tests---Every Procedure is under strict supervision 每道工序都是在严格监督下进行



Assembly inspection 安装检测



**Weld flaw detection**

Make sure premium welding and not easy cracking

焊道探伤检测--确保优质的焊道和不容易开裂

Regular Testing 常规检测



Modetails of sliding dipper boom:



## High-speed Heavy-load Bearings



The bearings are high-speed heavy-load bearings, and the bearings use larger diameters to withstand greater loads.



Double oil seal design prevents hydraulic oil from leaking, prolongs the service life of the cylinder



Clamshell bucket adopts double cylinders---less failure rate easy maintenance, not easy leak oil

## 1.2 Details of Three-section telescopic arm 三段式伸缩臂细节



The external hose pulley separates the hose from the wire rope, avoids the friction between the wire rope and the hose, reduces failures, and makes maintenance more convenient



Centralized lubrication system --easy for later maintenance



Stop valve - easy to replace attachments lessen oil leakage

## Premium Wire Rope

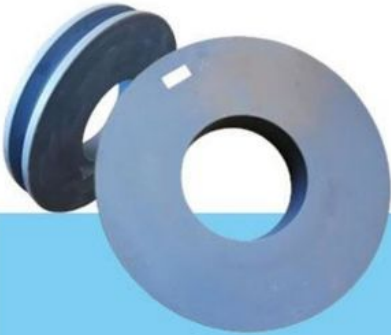
Xianyang Baoshi Rotary wire rope--can bear larger tension and impact



## Multi-strand Wire Rope



The inner core of the wire rope is a steel core, which has higher tensile strength.



## MC Steel



The pulley is made of MC steel, which has the same hardness as steel, but is light and wear-resistant. The wheel diameter is enlarged to withstand greater loads.

Examples of our sliding dipper boom:



30m for ZX490



#### 4. Examples

2 sets of 25m three-section telescopic arm



for Dossan 530



Top Picks from Kaiping Zhonghe Machinery:



Pile Arm Pile Boom







Long Arm Long Boom



Sliding Arm



Tunnel Arm / Shorten Arm



Contact our sales manager: Aria

Kaiping Zhonghe Machinery is a big Manufacturer of Excavator Arms and Booms

Key word: excavator long reach arm, excavator telescopic arm, excavator pile arm pile boom, excavator demolition arm, etc.

Big discount is awaiting!

Whatsapp: [wa.me/+8613822325403](https://wa.me/+8613822325403)

Email: [aria@excavatorboomarm.com](mailto:aria@excavatorboomarm.com)  
13822325403@163.com

Website link: [www.excavatorlongarm.com](http://www.excavatorlongarm.com)  
manufacturer excavatorlongarm longreachboomexcavator



Jiangmen Kaiping Zhonghe Machinery Manufacturing Co., Ltd



+86 13822325403



[aria@excavatorboomarm.com](mailto:aria@excavatorboomarm.com)



[excavatorlongarm.com](http://excavatorlongarm.com)

9 Huancui West Road, Cuishanhu New Area, Kaiping City, Guangdong Province, China