



## Telescopic Arm for Excavator BS900E Clamshell Bucket

Our Product Introduction

for more products please visit us on excavatorlongarm.com

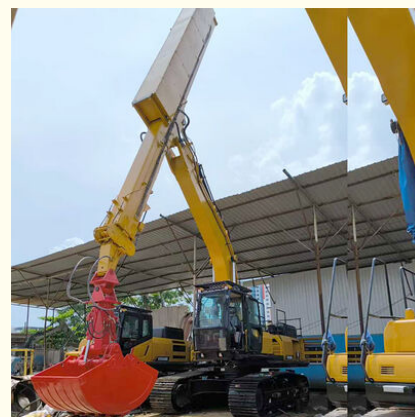
### Basic Information

- Place of Origin: Guangdong Province, China
- Brand Name: Kaiping Zhonghe Machinery Manufacturing Co. Ltd
- Certification: CE, Patent, ISO9001
- Model Number: SSB004
- Minimum Order Quantity: 1 set / piece
- Price: USD 119.00-USD8999.00
- Packaging Details: bubble / wooden cases / others as you request
- Delivery Time: 5-15/works
- Payment Terms: T/T, L/C or others as you request
- Supply Ability: 5 sets per week



### Product Specification

- Digging Depth(m): 18m 20m 25m 30m 32m
- Wire Rope: Good Quality Wire Rope Muti-strand
- Material: BS900E, Lighter And Stronger
- Wedling: Premium Welding
- Attachments: Bucket / Clamshell Bucket / Grapple / Customized
- OEM / ODM: YES
- Color: Customized, Red, Blue, Yellow Etc
- Warranty: 6 Months For The Telescopic Arm And Cylinder
- Clamshell Bucket Capacity: 1.5cbm 2cbm 2.5cbm 3cbm
- Highlight: Customized Attachments Telescopic Excavator,  
Welding Telescopic Excavator,  
Wire Rope Telescopic Excavator



### More Images



## Product Description

### BS900E Lighter Stronger sliding dipper boom with Grapple / Clamshell Bucket

#### Introduction of one set of excavator telescopic arm:

The telescopic arm for excavators is an advanced piece of engineering designed to enhance the versatility and operational efficiency of excavators across various construction and excavation projects. This innovative arm extends and retracts, allowing operators to reach further and work in tight spaces without having to reposition the entire machine. By utilizing hydraulic systems, the telescopic arm provides precise control, enabling it to perform tasks such as digging, lifting, and placing materials with ease and accuracy.

In addition to its enhanced reach, the telescopic arm is built to withstand rigorous working conditions, ensuring durability and reliability. Its design incorporates lightweight yet robust materials that contribute to overall machine performance and fuel efficiency. As construction projects demand greater flexibility and functionality, the telescopic arm has become an essential component in the arsenal of modern excavators, making it an invaluable asset for contractors seeking to optimize their operations.



Specifications of One Set of Telescopic Arm for Excavator:

Digging Depth(m)	Excavator Model(ton)	Bucket Capacity(cbm)
26-30m	36-50T	1.5
		1.5
		2
		2
		2.2
		2.2
	40-50T	2.2
31-32m	40-50T	2.2
		2.5

Welcome to send your excavator model to us for double check. Whatsapp: [+86 13822325403](https://www.whatsapp.com/channel/0029913822325403)

Feedback from Clients of Excavator Teledipper:





### Production of One Set Excavator Telescopic Boom Telescopic Arm:

\* Professional \*High Precision \*High Quality \*High Effective \*Longer service life-span

### Product Manufacturing Process



① Drawing Design

② Plate Cutting



③ Machining



④ Beveling



⑤ Bending

⑥ Welding



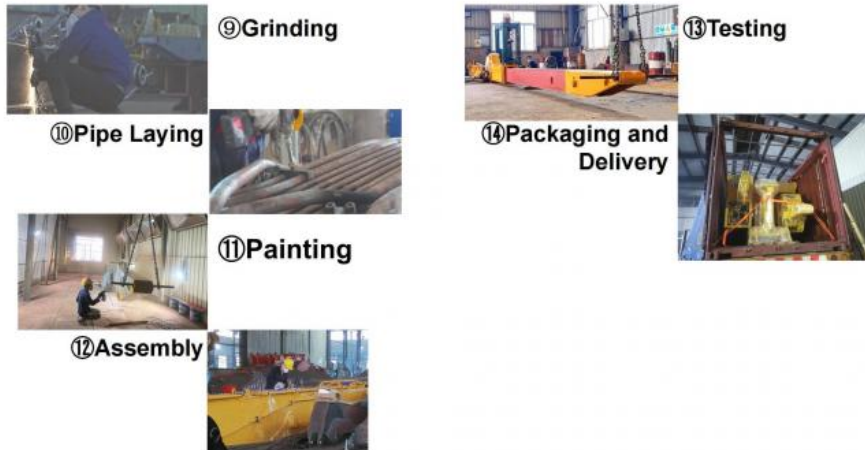
⑦ Weld Flaw Detection



⑧ Boring Machine Processing



## Product Manufacturing Process



Top Picks from Kaiping Zhonghe Machinery:





Contact our sales manager: Aria

Kaiping Zhonghe Machinery is a big Manufacturer of Excavator Arms and Booms

Key word: excavator long reach arm, excavator telescopic arm, excavator pile arm pile boom, excavator demolition arm, etc.

Big discount is awaiting!

Whatsapp: [wa.me/+8613822325403](https://wa.me/+8613822325403)

Email: [aria@excavatorboomarm.com](mailto:aria@excavatorboomarm.com)  
[13822325403@163.com](mailto:13822325403@163.com)

Website link: [www.excavatorlongarm.com](http://www.excavatorlongarm.com)  
manufacturer excavatorlongarm longreachboomexcavator



**Jiangmen Kaiping Zhonghe Machinery Manufacturing Co., Ltd**



+86 13822325403



[aria@excavatorlongarm.com](mailto:aria@excavatorlongarm.com)



[excavatorlongarm.com](http://excavatorlongarm.com)

9 Huancui West Road, Cuishanhu New Area, Kaiping City, Guangdong Province, China