



Stronger Excavator Telescopic Arm With Grapple Long Reach Telescopic Cylinder

Our Product Introduction

for more products please visit us on excavatorlongarm.com

Basic Information

- Place of Origin: Guangdong Province, China
- Brand Name: Kaiping Zhonghe Machinery Manufacturing Co. Ltd
- Certification: CE, patent, ISO
- Model Number: SSB0012
- Minimum Order Quantity: 1 set / piece
- Price: USD 119.00-USD8899.00
- Packaging Details: bubble / wooden cases / others as you request
- Delivery Time: 5-20/works
- Payment Terms: T/T, L/C or others as you request
- Supply Ability: 5 sets per week

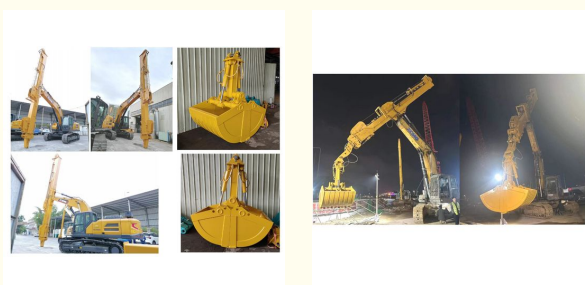


Product Specification

- Material: BS900E, Lighter And Stronger
- Wire Rope: Longer Service Life-span
- Long Reach: 20m 25m 30m 32m
- Attachments: Bucket / Clamshell Bucket / Grapple Customized
- Warranty: 6 Months For The Arm
- Welding: Premium Welding, Wire Rope
- Highlight: Stronger Excavator Telescopic Arm, Grapple Telescopic Arm, Long Reach Telescopic Cylinder



More Images



Product Description

Premium Wire Rope Excavator Telescopic Arm with Better Clamshell Bucket

Introduction of Kaiping Zhonghe Machinery's telescopic arm for excavator:

Kaiping Zhonghe Machinery's excavator telescopic arm features an advanced wire rope that significantly enhances its operational efficiency in construction tasks. This high-quality wire rope is designed to withstand heavy loads and provide reliable performance, ensuring that the telescopic arm operates smoothly and effectively in demanding environments. With improved durability and strength, the wire rope enables precise maneuverability and greater lifting capacity, making it an invaluable asset for a variety of construction projects. As a result, contractors can complete their work more quickly and safely, further establishing Kaiping Zhonghe Machinery as a trusted name in the industry.



Specification of one set telescopic excavator:

Welcome to send your excavator model to us for double check. Whatsapp: [+86 13822325403](https://wa.me/8613822325403)

Digging Depth(m)	Excavator Model(ton)	Bucket Capacity(cbm)
26-30m	36-50T	1.5
		1.5
		2
		2
		2.2
		2.2
	40-50T	2.2
31-32m	40-50T	2.2
		2.5

Suitable excavators: Sany Hitachi Komatsu Zoomlion etc. Pls feel free to contact us for more details.

Production of one set telescopic arm excavator:

* Professional *High Effective *Longer service life-span *High Precision

Panel is cut by CNC
plasma machine with
less deformation



Large floor-standing
double-sided boring
machine
Higher accuracy



Beveling Machine
Every board will be
beveled before being
welded which enhances
the weld bead

Customized and thickened Connectors which is not easy to oil leakage
Special design can bear huge stress:



Full Tests---Every Procedure is under strict supervision 每道工序都是在严格监督下进行



Assembly inspection 安装检测



Weld flaw detection

Make sure premium welding and not easy cracking

焊道探伤检测--确保优质的焊道和不容易开裂

Regular Testing 常规检测



Modetails of our excavator telescopic arm:



High-speed Heavy-load Bearings



The bearings are high-speed heavy-load bearings, and the bearings use larger diameters to withstand greater loads.



Double oil seal design prevents hydraulic oil from leaking, prolongs the service life of the cylinder



Clamshell bucket adopts double cylinders---less failure rate easy maintenance, not easy leak oil

1.2 Details of Three-section telescopic arm

三段式伸缩臂细节



The external hose pulley separates the hose from the wire rope, avoids the friction between the wire rope and the hose, reduces failures, and makes maintenance more convenient



Centralized lubrication system
--easy for later maintenance



Stop valve - easy to replace
attachments
lessen oil leakage

Premium Wire Rope

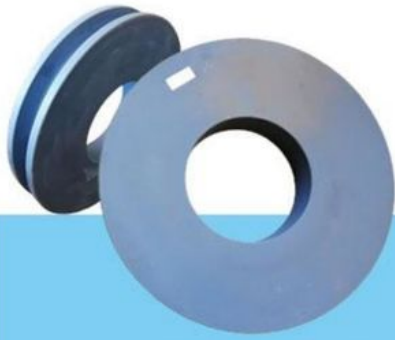
Xianyang Baoshi Rotary wire rope--can bear larger tension and impact



Multi-strand Wire Rope



The inner core of the wire rope is a steel core, which has higher tensile strength.



MC Steel



The pulley is made of MC steel, which has the same hardness as steel, but is light and wear-resistant. The wheel diameter is enlarged to withstand greater loads.

Top Picks:



Pile Arm Pile Boom



Long Arm Long Boom



Sliding Arm





Contact Details of Excavator Arm and Boom:

Kaiping Zhonghe Machinery is a big Manufacturer of Excavator Arms and Booms
Welcome to contact for a big discount!

Whatsapp: wa.me/+8613822325403

Email: aria@excavatorboomarm.com
13822325403@163.com

Website link: www.excavatorlongarm.com
manufacturer excavatorlongarm longreachboomexcavator



Jiangmen Kaiping Zhonghe Machinery Manufacturing Co., Ltd



+86 13822325403



aria@excavatorboomarm.com



excavatorlongarm.com

9 Huancui West Road, Cuishanhu New Area, Kaiping City, Guangdong Province, China