



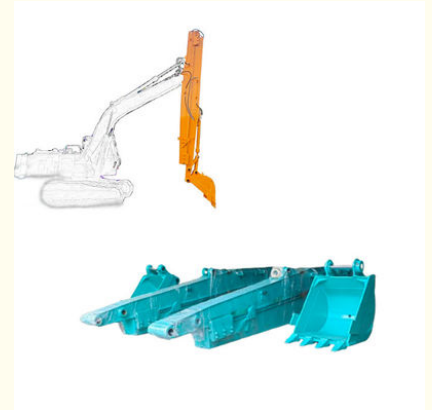
Excavator Long Reach Boom And Telescopic Arm Better Welding

Our Product Introduction

for more products please visit us on excavatorlongarm.com

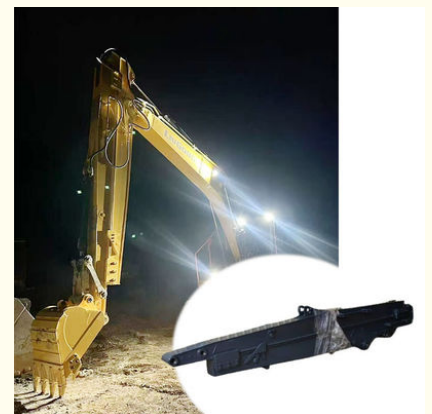
Basic Information

- Place of Origin: Guangdong Province, China
- Brand Name: Kaiping Zhonghe Machinery Manufacturing Co. Ltd
- Certification: CE, patent, ISO
- Model Number: HB009
- Minimum Order Quantity: 1 set / piece
- Price: USD 129.00-USD6999.00
- Packaging Details: bubble / wooden cases
- Delivery Time: 5-25/works
- Payment Terms: T/T, L/C
- Supply Ability: 5 sets per week

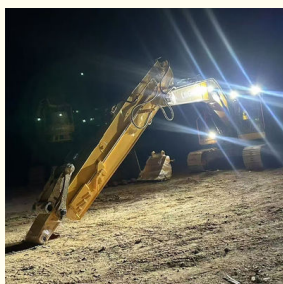


Product Specification

- Material: Q355B Or Q690D Or As You Request
- Color: Red, Yellow, Blue, Black
- Warranty: 6 Months
- Digging Depth(m): 8m 10m 12m 14m 16m
- Quality: High Quality
- Suitable Excavators: Cat Hitachi Komatsu Sany Zoomlion
- Highlight: **Better Welding Excavator Telescopic Boom, Welding Excavator Telescopic Arm, Excavator Long Reach Telescopic Boom**



More Images



Product Description

Big Manufacturer of Excavator Telescopic Arm Precision Production

Introduction of Excavator Section Telescopic Arm:

The premium telescopic arm excavator excels in construction tasks by offering exceptional reach and versatility for various applications. Its innovative design enables seamless extension and retraction, allowing operators to maneuver through tight spaces and perform precise actions. This capability is particularly beneficial for projects requiring deep excavation. Constructed from robust materials and featuring state-of-the-art hydraulic systems, the telescopic arm can handle substantial loads while maintaining stability and control. As a result, this machinery significantly enhances productivity and efficiency on job sites, establishing it as a vital tool for industry professionals.

Working condition of one set of Excavator Long Reach Boom And Telescopic Arm

Digging foundation pit, house foundation, digging sand soil gravel, narrow places.



Feedback of Excavator Long Reach Boom And Telescopic Arm from clients:

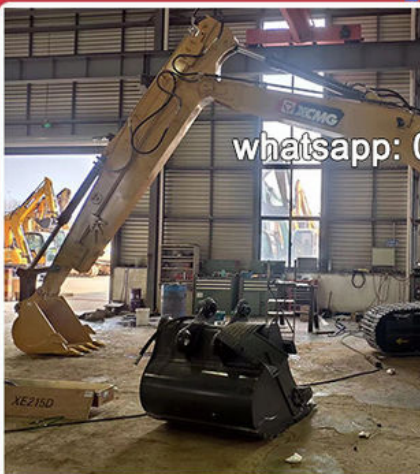
Feedback from Clients



from Tonny:
Very excellent telescopic boom.
on my pc 200 excavator suitably.



from Jason:
cool, the telescopic boom
works effectively. suitable for
digging.



from David:
very nice service.
The boom works very good.
safe and balanced operation



from Kevin:
suitable for digging caisson.
save energy.

whatsapp: 0086 13822325403

Some excellent design of our Excavator Long Reach Boom And Telescopic Arm:

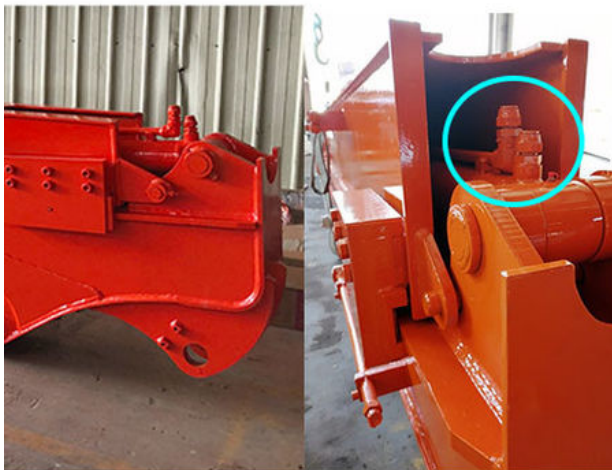
Excellent design of Excavator Long Reach Boom And Telescopic Arm which prolonger the service life-span and lessen the fail rate.



Strews
Available



its easy for the
pipeline jumps
up, causing
damage to the
pipeline.



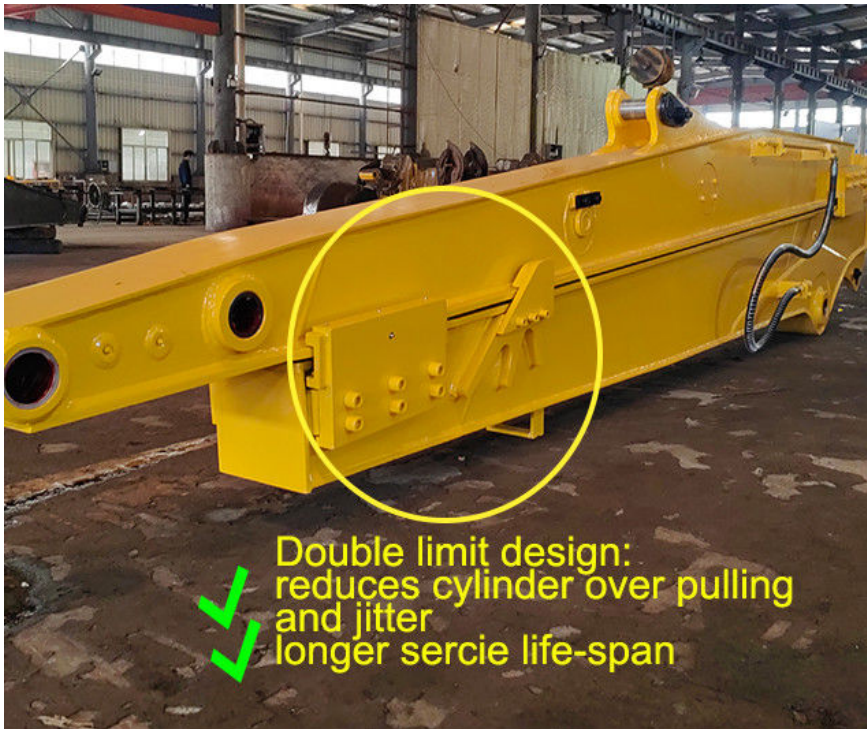
Welded on, less
vibration and
longer service
life.



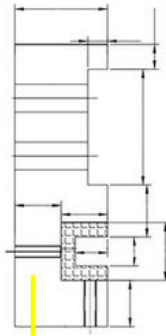
Double limit design
reduces cylinder over pulling
and jitter



Huge vibration
cylinder easy to fail



Double limit design:
reduces cylinder over pulling
and jitter
longer service life-span



Thicken
Reduce cracking and failure rate



Longer service life-span



Easy to fail and crack

Other Top Picks of Excavator arm and boom:



Three-section Telescopic Arm



Tunnel Arm / Shorten Arm





Pile Arm Pile Boom



Long Arm Long Boom



Welcome to contact Aria:



Sales Manager

Manufacturer of Excavator Arm and Boom

Whatsapp: +86 13822325403

Email: aria@excavatorboomarm.com
13822325403@163.com

Web: www.excavatorlongarm.com



Key word:

excavator telescopic arm
telescopic arm for excavator
telescopic arm excavator
excavator section telescopic arm
telescopic boom excavator
excavator telescopic boom
excavator telescope
telescopic crawler excavator
telescopic cab excavator
telescopic chassis excavator
hydraulic telescoping excavator



Jiangmen Kaiping Zhonghe Machinery Manufacturing Co., Ltd

+86 13822325403

aria@excavatorboomarm.com

excavatorlongarm.com

9 Huancui West Road, Cuishanhu New Area, Kaiping City, Guangdong Province, China