



Big Manufacturer of Telescopic Excavator with Bucket Better Welding

Our Product Introduction

Basic Information

- Place of Origin: China, Guangdong
- Brand Name: Kaiping Zhonghe Machinery Manufacturing Co. Ltd
- Certification: CE, patent, ISO
- Model Number: HB005
- Minimum Order Quantity: 1 set / piece
- Price: USD 159.00-USD3999.00
- Packaging Details: bubble / wooden cases
- Delivery Time: 5-20/works
- Payment Terms: T/T, L/C
- Supply Ability: 5 sets per week



Product Specification

- Color: Customized
- Suitable Excavators: Cat Hitachi Komatsu Sany
- Material: Q355B
- Digging Depth(m): 10M 12M 16M
- Plates: Shaogang Plates
- Cylinder: High Quality Cylinder



More Images



for more products please visit us on excavatorlongarm.com

Product Description

10M Telescopic Excavator with Bucket for Digging Foundation Pit

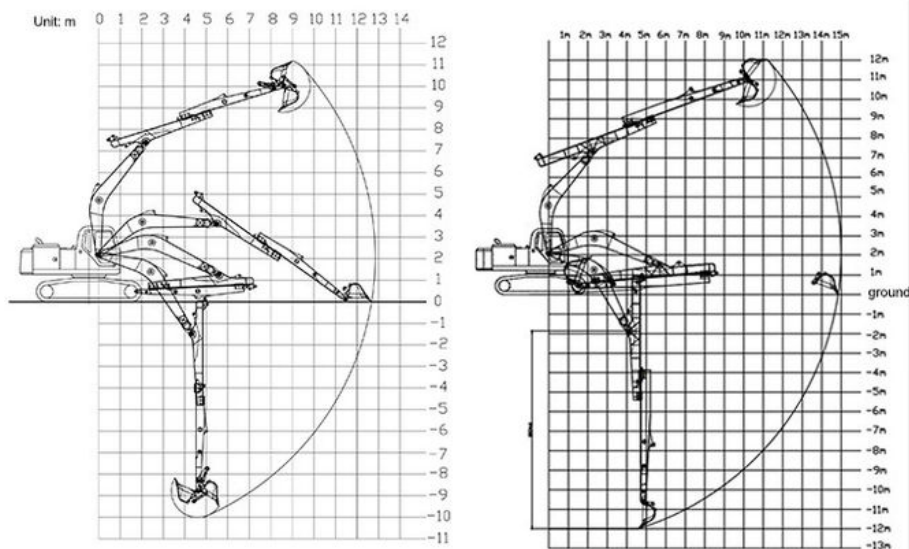
Introduction of Telescopic Excavator with Bucket:

A telescopic excavator represents a highly adaptable piece of heavy machinery tailored for a variety of excavation projects. Its standout feature is the extendable arm, which grants operators the ability to access greater distances and depths compared to conventional excavators. This flexibility of telescopic boom arm makes telescopic excavators particularly suitable for diverse applications such as construction, landscaping, and utility installation. The hydraulic telescoping excavator can be adjusted to different lengths, enhancing operational efficiency even in confined or challenging spaces.

Moreover, telescopic excavators incorporate sophisticated hydraulic systems that provide smooth and accurate functionality. This advanced technology allows operators to execute tasks with improved precision, whether it involves digging, lifting, or transporting materials. The combination of increased reach and cutting-edge hydraulics not only boosts overall productivity but also enhances safety on job sites. By enabling operators to work from a safer distance, these machines minimize the risks associated with close proximity to hazardous conditions.

Specification of one set of excavator telescopic boom:

Excavator Model(ton)	Bucket Capacity(cbm)	Digging Depth(m)
3-4T	0.1	4
6-8T	0.2	6
10-12T	0.35	8
20-27T	0.5-0.6	10
20-27T	0.45	12
30-36T	1.2	10
30-36T	1	12
30-36T	0.6	12



Production of one set of telescope for mini excavator:

Panel is cut by CNC plasma machine with less deformation





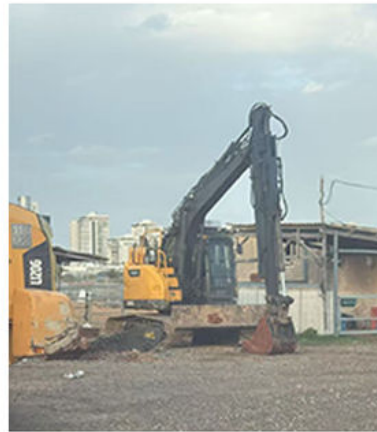
Large floor-standing
double-sided boring
machine
Higher accuracy



Beveling Machine
Every board will be
beveled before being
welded which enhances
the weld bead

Pictures of one set of telescopic chassis excavator:





Feel free to contact Aria~~ Big Discount is Awaiting~~

Kaiping Zhonghe Machinery is a big Manufacturer of Excavator telescopic
Welcome to contact for a big discount!

Whatsapp: wa.me/+8613822325403

Email: aria@excavatorboomarm.com
13822325403@163.com

Website link: www.excavatorlongarm.com

manufacturer excavatorlongarm longreachboomexcavator



Jiangmen Kaiping Zhonghe Machinery Manufacturing Co., Ltd



+86 13822325403



aria@excavatorboomarm.com



excavatorlongarm.com

9 Huancui West Road, Cuishanhu New Area, Kaiping City, Guangdong Province, China