



10M Excavator Telescopic Boom for Hitachi Komatsu Sany Cat Zoomlion

Our Product Introduction

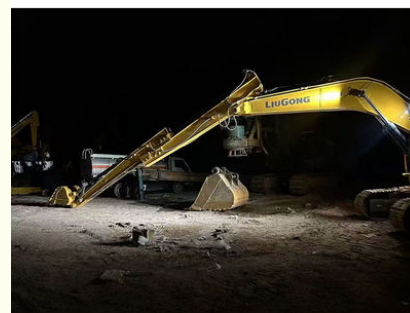
Basic Information

- Place of Origin: Guangdong Province, China
- Brand Name: Kaiping Zhonghe Machinery Manufacturing Co. Ltd
- Certification: CE, patent, ISO
- Model Number: HB0012
- Minimum Order Quantity: 1 set / piece
- Price: USD 139.00-USD6999.00
- Packaging Details: bubble / wooden cases / others as you request
- Delivery Time: 10-20/works
- Payment Terms: T/T, L/C
- Supply Ability: 5 sets per week

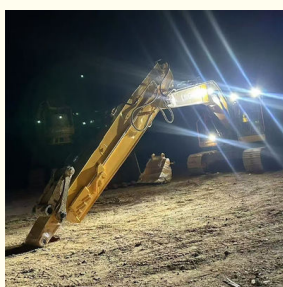
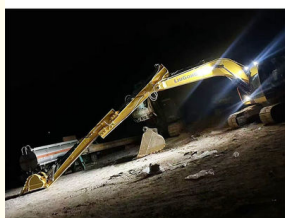


Product Specification

- Material: Q355B Or Q690D Or As You Request
- Long Reach: 10M 12M 16M
- Warranty: 6 Months, 3 Months
- Quality: Premium
- High Effective: Yes
- After-sales Service: 24h



More Images



for more products please visit us on excavatorlongarm.com

Product Description

10M Excavator Telescopic Boom for Hitachi Komatsu Sany Cat Zoomlion

Introduction of Telescopic Excavator:

A telescopic excavator is a versatile piece of heavy machinery designed for a wide range of excavation tasks. Its defining feature is the extendable arm, which allows operators to reach greater distances and depths than traditional excavators. This adaptability makes them ideal for various applications, including construction, landscaping, and utility work. The telescopic arm can be adjusted to different lengths, providing enhanced flexibility and efficiency in tight or challenging work environments. In addition to their reach, telescopic excavators are equipped with advanced hydraulic systems that ensure smooth and precise operation. This technology enables operators to perform tasks with greater control and accuracy, whether they're digging, lifting, or moving materials. The combination of extended reach and advanced hydraulics not only maximizes productivity but also improves safety on job sites by allowing operators to work from a distance, reducing the need for close interaction with hazardous areas.

Highlights of Kaiping Zhonghe Machinery's Telescopic Excavator:

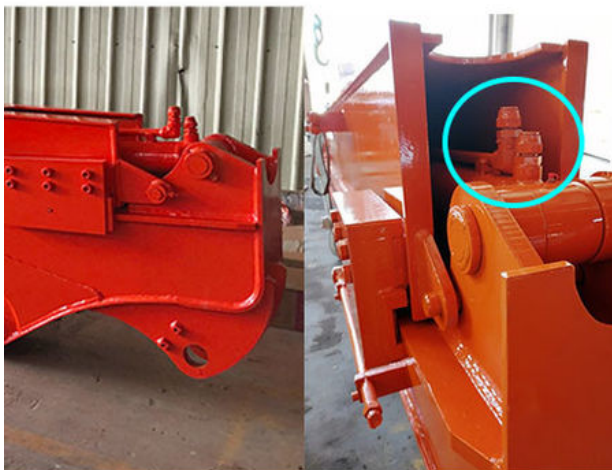




Strews
Available



its easy for the
pipeline jumps
up, causing
damage to the
pipeline.



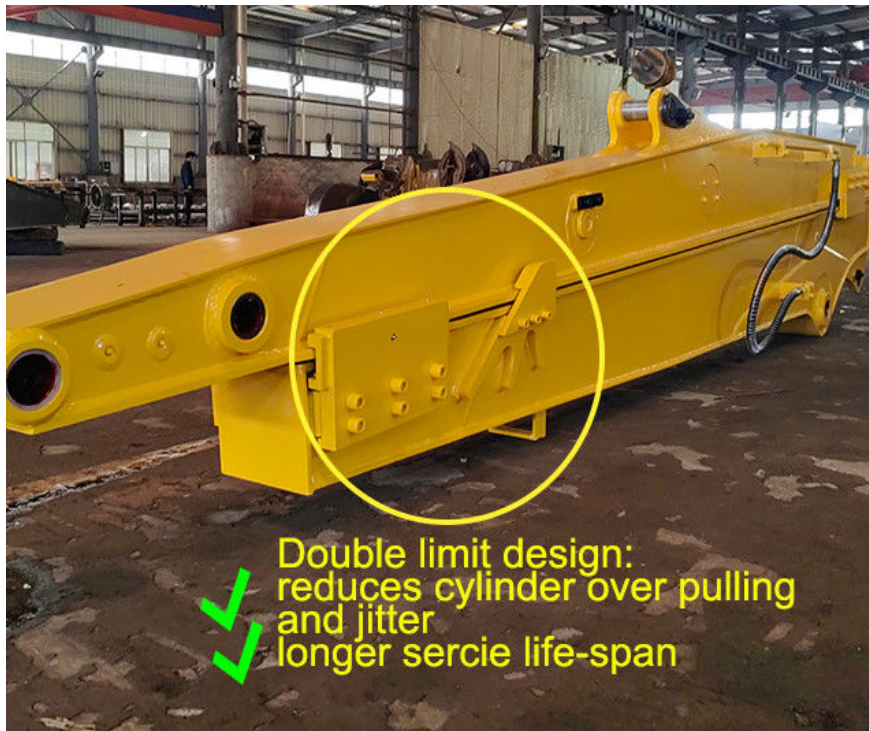
Welded on, less
vibration and
longer service
life.



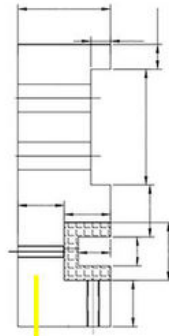
Double limit design
reduces cylinder over pulling
and jitter



Huge vibration
cylinder easy to fail



Double limit design:
reduces cylinder over pulling
and jitter
longer service life-span



Thicken
Reduce cracking and failure rate



Longer service life-span



Easy to fail and crack





Sales Manager

Manufacturer of Excavator Arm and Boom

Whatsapp: +86 13822325403

Email: aria@excavatorboomarm.com
13822325403@163.com

Web: www.excavatorlongarm.com



Jiangmen Kaiping Zhonghe Machinery Manufacturing Co., Ltd



+86 13822325403



aria@excavatorboomarm.com



excavatorlongarm.com

9 Huancui West Road, Cuishanhu New Area, Kaiping City, Guangdong Province, China