



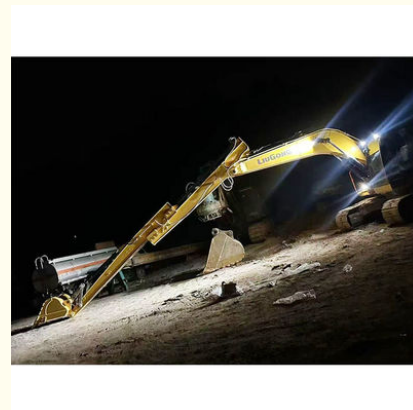
## Telescopic Arm For Excavator Cat Hitachi Komatsu Sany Zoomlion

Our Product Introduction

for more products please visit us on excavatorlongarm.com

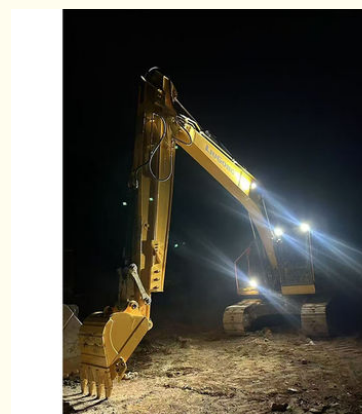
### Basic Information

- Place of Origin: Guangdong Province, China
- Brand Name: Kaiping Zhonghe Machinery Manufacturing Co. Ltd
- Certification: CE, patent, ISO
- Model Number: HB009
- Minimum Order Quantity: 1 set / piece
- Price: USD 139.00-USD6999.00
- Packaging Details: bubble / wooden cases
- Delivery Time: 5-25/works
- Payment Terms: T/T, L/C
- Supply Ability: 5 sets per week

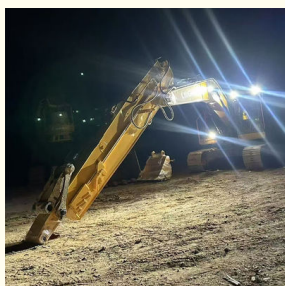


### Product Specification

- Material: Q355B
- Welding: Better Welding
- Digging Depth(m): 8m 10m 12m 14m 16m
- Suitable Excavator(ton): 6ton To 55ton Excavators
- Color: Red, Yellow, Blue
- Longer Service Life-span: Longer Life-span
- Highlight: Hitachi Telescopic Arm, Cat Telescopic Arm, Komatsu Telescopic Arm



### More Images



## Product Description

### Telescopic Arm for Excavator with Better welding Better Performance

#### Introduction of one set of telescopic arm excavator:

The excavator sliding arm serves as a highly versatile tool in the construction industry, significantly boosting the efficiency and adaptability of excavation work. Its design allows for smooth extension and retraction, enabling operators to access various heights and depths effortlessly. This capability makes it suitable for a wide range of tasks, including digging, grading, and lifting heavy objects. With this flexibility, construction teams can easily manage different job site conditions, whether they are in confined areas or handling extensive projects. Moreover, the sliding arm can be equipped with various attachments like buckets and grapples, enhancing its overall utility. In summary, the excavator sliding arm is crucial for maximizing both productivity and maneuverability in construction operations.

#### Some specs of one set of excavator section telescopic arm:

Suitable excavator model(ton)	Bucket capacity(cbm)	Digging depth(m)
3-4T	0.1	4
6-8T	0.2	6
10-12T	0.35	8
20-27T	0.5-0.6	10
20-27T	0.45	12
30-36T	1.2	10
30-36T	1	12
	0.6	12

#### Some excellent design of our telescopic arm excavator:

# Feedback from Clients



from Tonny:  
Very excellent telescopic boom.  
on my pc 200 excavator suitably.



from Jason:  
cool, the telescopic boom  
works effectively. suitable for  
digging.



from David:  
very nice service.  
The boom works very good.  
safe and balanced operation



from Kevin:  
suitable for digging caisson.  
save energy.

whatsapp: 0086 13822325403

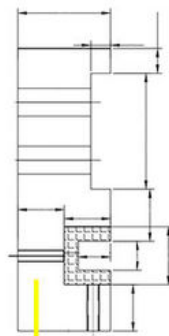
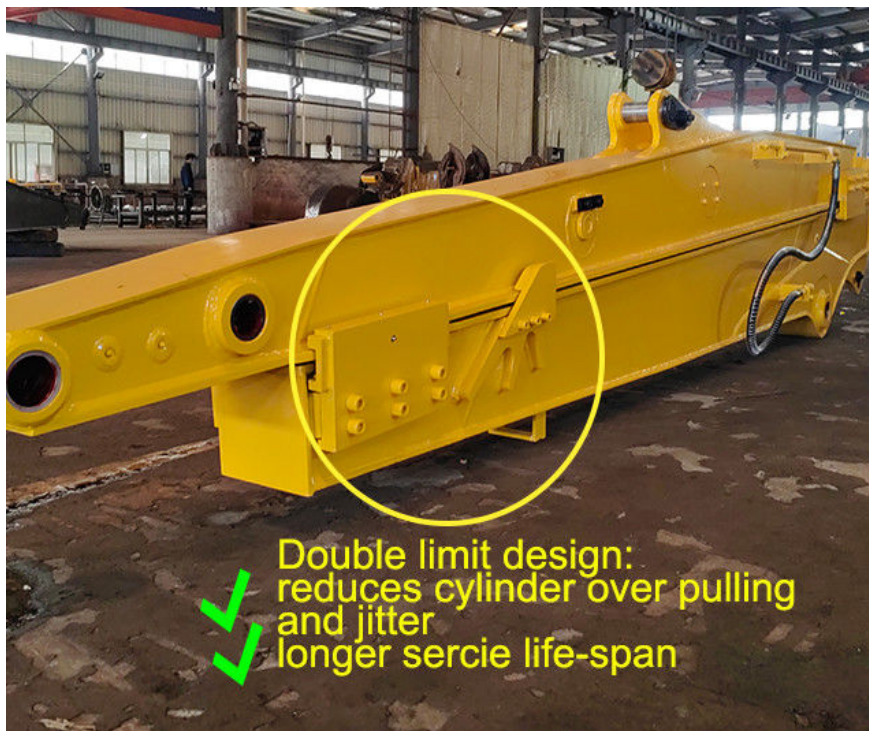


Double limit design  
reduces cylinder over pulling  
and jitter

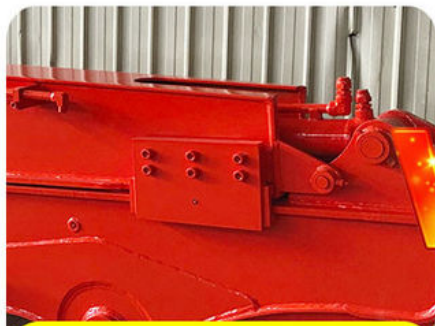


Huge vibration  
cylinder easy to fail





Thicken  
 Reduce cracking and failure rate



Longer service life-span



Easy to fail and crack





its easy for the pipeline jumps up, causing damage to the pipeline.



Welded on, less vibration and longer service life.

Contact details:



Sales Manager

Manufacturer of Excavator Arm and Boom

Whatsapp: +86 13822325403

Email: [aria@excavatorboomarm.com](mailto:aria@excavatorboomarm.com)  
13822325403@163.com

Web: [www.excavatorlongarm.com](http://www.excavatorlongarm.com)



Jiangmen Kaiping Zhonghe Machinery Manufacturing Co., Ltd

+86 13822325403

[aria@excavatorboomarm.com](mailto:aria@excavatorboomarm.com)

[excavatorlongarm.com](http://excavatorlongarm.com)

9 Huancui West Road, Cuishanhu New Area, Kaiping City, Guangdong Province, China