



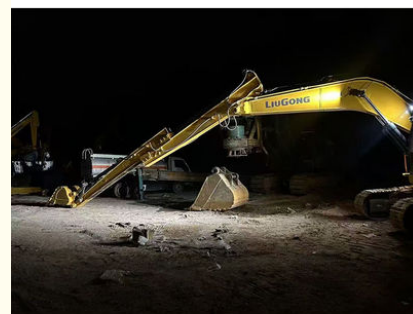
Telescopic Arm for Excavator for Liugong 920 with Bucket for Digging

Our Product Introduction

for more products please visit us on excavatorlongarm.com

Basic Information

- Place of Origin: Guangdong Province, China
- Brand Name: Kaiping Zhonghe Machinery Manufacturing Co. Ltd
- Certification: CE, patent, ISO
- Model Number: HB007
- Minimum Order Quantity: 1 set / piece
- Price: USD 169.00-USD5999.00
- Packaging Details: bubble / wooden cases
- Delivery Time: 5-25/works
- Payment Terms: T/T, L/C
- Supply Ability: 5 sets per week



Product Specification

- Warranty: 6 Months
- Quality: Premium
- Cylinder: High Quality Cylinder
- Digging Depth(m): 10m 12m
- Telescopic: Yes
- Suitable Excavator: Cat Hitachi Komatsu Sany



More Images



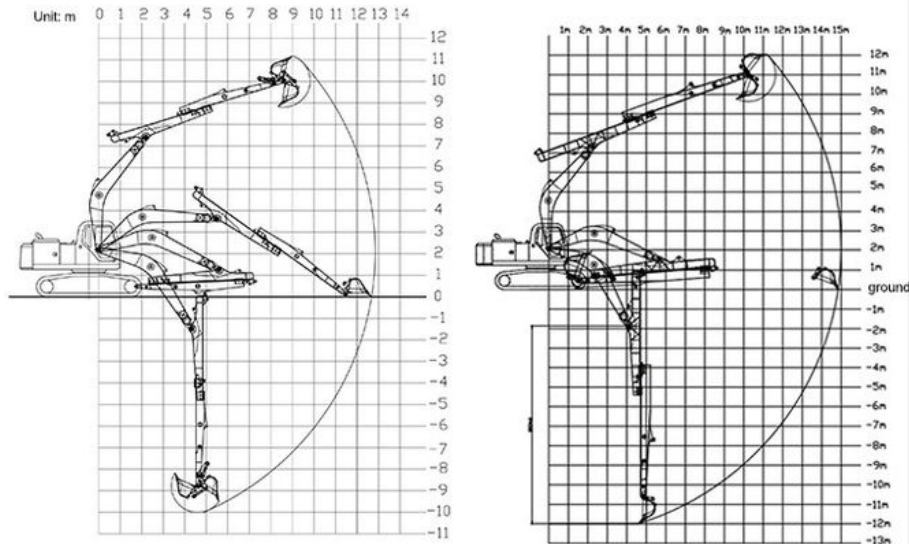
Product Description

Telescopic Arm for Excavator for Liugong 920 with Better Welding Performance

Introduction of Kaiping Zhonghe Machinery's excavator telescopic boom:

The excavator telescopic arm is an incredibly versatile tool in construction work, designed to enhance the efficiency and flexibility of excavation tasks. Its ability to extend and retract allows operators to reach various heights and depths, making it ideal for a range of applications, from digging and grading to lifting heavy materials. The adaptability of telescopic arm for excavator enables crews to tackle diverse job sites with ease, whether they are working in tight spaces or on large-scale projects. Additionally, telescopic arm excavator can accommodate different attachments, such as buckets and grapples, further expanding its functionality. Overall, excavator section telescopic arm is essential for optimizing productivity and maneuverability on construction sites.

Some excellent design of Kaiping Zhonghe Machinery's telescopic boom excavator.



its easy for the pipeline jumps up, causing damage to the pipeline.



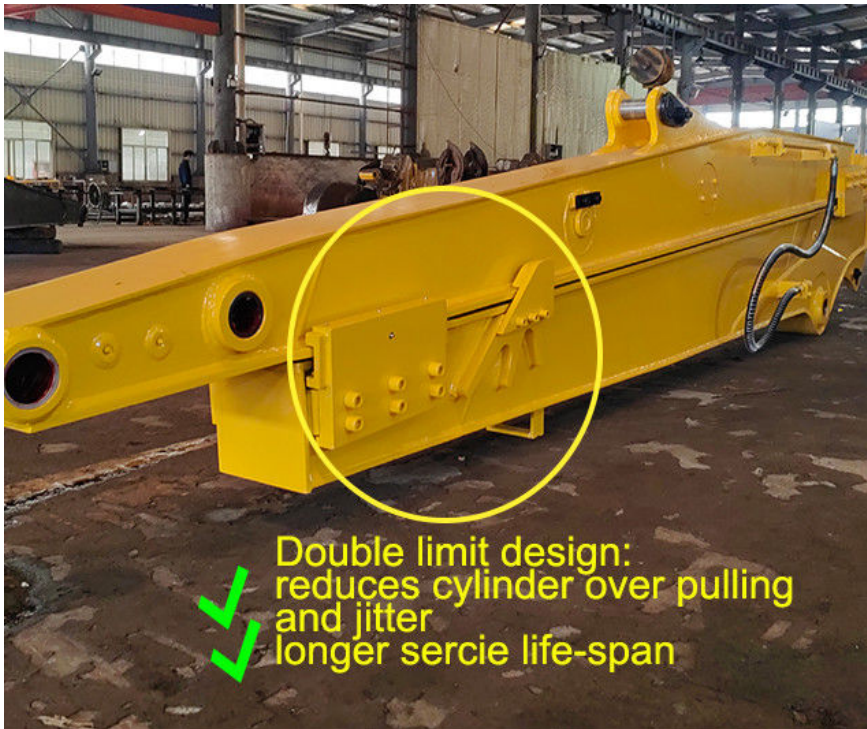
Welded on, less vibration and longer service life.



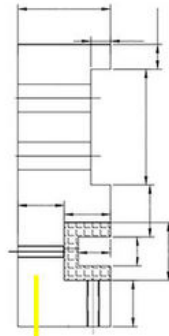
Double limit design
reduces cylinder over pulling
and jitter



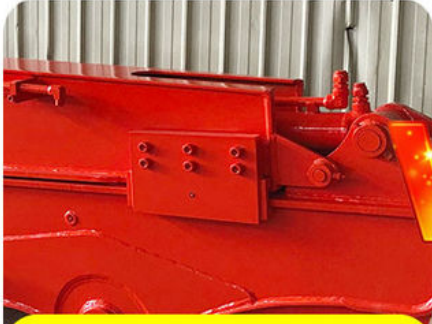
Huge vibration
cylinder easy to fail



Double limit design:
reduces cylinder over pulling
and jitter
longer service life-span



Thicken
Reduce cracking and failure rate



Longer service life-span

VS



Easy to fail and crack



Strews
Available



Sales Manager

Manufacturer of Excavator Arm and Boom

Whatsapp: +86 13822325403

Email: aria@excavatorboomarm.com
13822325403@163.com

Web: www.excavatorlongarm.com



Jiangmen Kaiping Zhonghe Machinery Manufacturing Co., Ltd



+86 13822325403



aria@excavatorboomarm.com



excavatorlongarm.com

9 Huancui West Road, Cuishanhu New Area, Kaiping City, Guangdong Province, China