



Telescopic Arm For Excavator Hitachi Komatsu Sany Cat

Our Product Introduction

for more products please visit us on excavatorlongarm.com

Basic Information

- Place of Origin: Guangdong province, China
- Brand Name: Kaiping Zhonghe Machinery Manufacturing Co. Ltd
- Certification: CE, patent, ISO
- Model Number: HB007
- Minimum Order Quantity: 1 set / piece
- Price: USD 138.00-USD4999.00
- Packaging Details: bubble, wooden case, or others as you request
- Delivery Time: 7-35/works
- Payment Terms: T/T, L/C
- Supply Ability: 6 sets per week



Product Specification

- Features: Telescopic Arm
- Material: Shaogang Q355B / Q690D
- Condition: Brand New
- Bucket Capacity: 0.1 Cbm - 1cbm
- Maximum Digging Depth: 6m, 8m, 10m, 12m
- Warranty: 6 Months For The Arm And Cylinder, 3 Months For The Bucket
- Apply To: 6ton - 50ton Excavators
- Suitable Working Conditions: Foundation Pit, Basement, Narrow Places
- Highlight: Hitachi Excavator Telescopic Arm, Komatsu Sany Cat Telescopic Arm, Komatsu Excavator Telescopic Arm



More Images

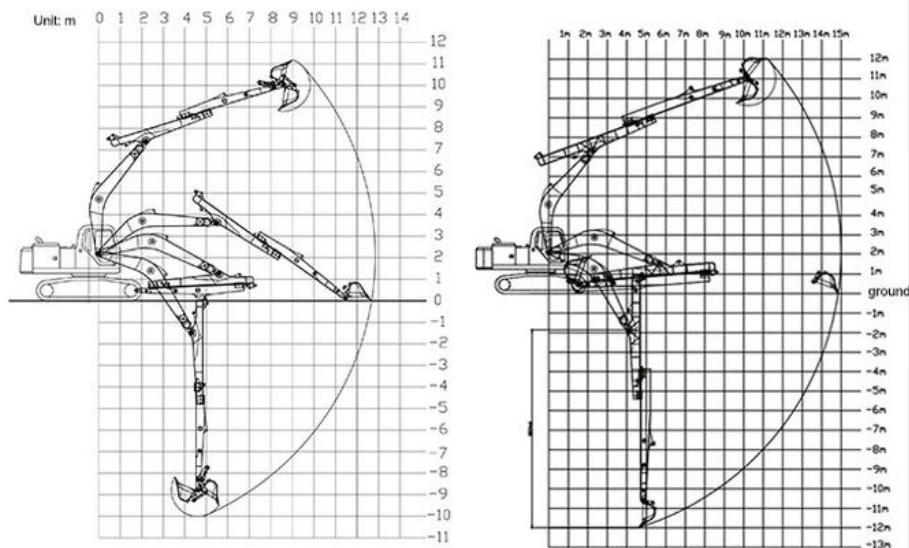


Product Description

Longer Service Life-span Hydraulic Telescoping Excavator with Bucket

Introduction of one set of Excavator Telescopic Boom Telescopic Arm:

The sliding arm of an excavator is extensively utilized for tasks such as digging house foundations, basements, and foundation pits. Its digging depth exceeds that of a standard arm, making it particularly effective for deeper excavations. Additionally, the robust construction of the sliding arm ensures efficient operation. In tight workspaces, its telescopic design enhances maneuverability, allowing for more flexible operation in constrained conditions.



Specifications of one set of hydraulic telescoping excavator:

| Excavator model(ton) | bucket capacity (cbm) | Maximum Digging Depth |
|----------------------|-----------------------|-----------------------|
| 3-4 ton | 0.1 cbm | 4m |
| 6-8 ton | 0.2 cbm | 6m |
| 10-12 ton | 0.35cbm | 8m |
| 20-27 ton | 0.5 cbm | 10m |
| 30-36 ton | 0.6 cbm | 12m |

Please send your excavator model to us. Suitable length will be sent according to your excavator model.



Some excellent design of our excavator telescopic boom:

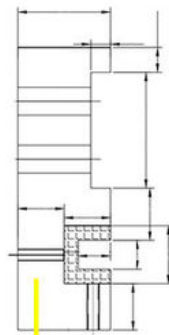
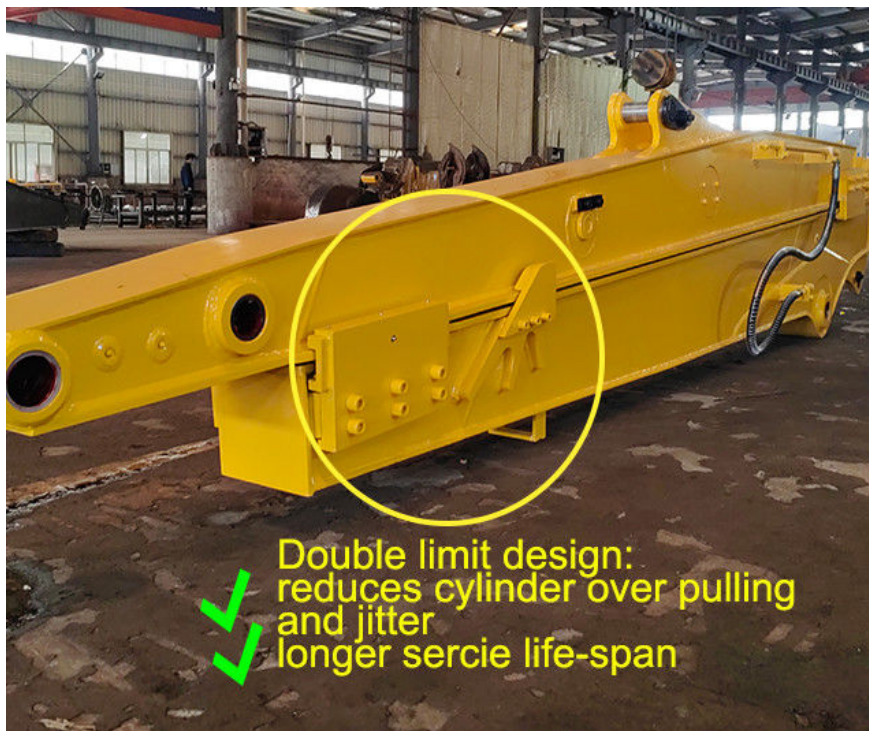
- * Enhanced slider and pipeline design which prolonger the service life-span of telescopic crawler excavator
- * The thickened plates which ensure the hydraulic telescoping excavator not easy deformation
- * Double oil seal cylinder enhances the excavator sliding arm which is not easy to oil leakage.



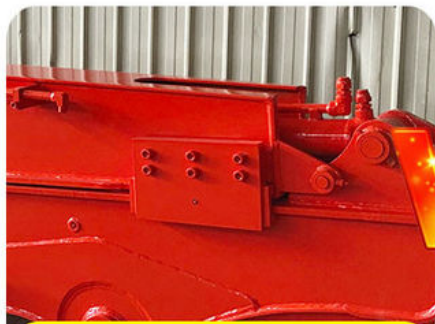
Double limit design
reduces cylinder over pulling
and jitter



Huge vibration
cylinder easy to fail



Thicken
 Reduce cracking and failure rate



Longer service life-span



Easy to fail and crack

Feedback of hydraulic telescoping excavator boom:



We are located in Guangdong Province, China. A 18000 m² 50 welding workers with over 7 years experience, 30 senior designers, and a high-tech R&D team(10+ years on customization, 100+ technical patents), strict production system (6+ years quality control and cost control) and warm-hearted service team. Our annual output of various types of excavator boom arms can reach up to 600 sets.

13822325403@163.com



Jiangmen Kaiping Zhonghe Machinery Manufacturing Co., Ltd



+86 13822325403



aria@excavatorboomarm.com



excavatorlongarm.com

9 Huancui West Road, Cuishanhu New Area, Kaiping City, Guangdong Province, China