



Long Reach Use Excavator Telescopic Boom Shaogang Q355B Better Slider

Our Product Introduction

for more products please visit us on excavatorlongarm.com

Basic Information

- Place of Origin: Guangdong Province, China
- Brand Name: Kaiping Zhonghe Machinery Manufacturing Co. Ltd
- Certification: CE, patent, ISO
- Model Number: HB006
- Minimum Order Quantity: 1 set / piece
- Price: USD 100.00-USD5000.00
- Packaging Details: bubble / wooden cases/ others
- Delivery Time: 5-20/works
- Payment Terms: T/T, L/C
- Supply Ability: 15 sets per week

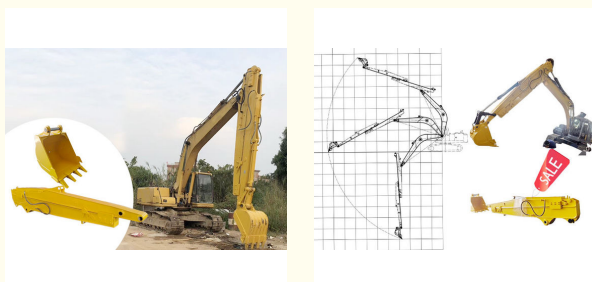


Product Specification

- High Efficiency: High Efficiency
- Working Condition: Digging Sand Soil Silt Etc
- Cylinders: High Quality Cylinders
- Steel Material: Shaogang Q355B
- Connectors: High Quality Connectors
- Excavators: Cat Hitachi Komatsu Sany
- Highlight: **Better Slider Excavator Telescopic Boom, Long Reach Excavator Telescopic Boom, Shaogang Q355B Excavator Telescopic Boom**



More Images



Product Description

Kaiping Zhonghe Machinery's Telescopic Boom Excavator With Long Reach

Kaiping Zhonghe Machinery's Excavator Telescopic Boom Telescopic Arm has become a super hot-seller in the construction industry, thanks to its exceptional quality and performance. One of the standout features of this telescopic arm is the use of Shaogang Q355B steel, known for its superior welding properties. This high-grade material not only enhances the structural integrity of the arm but also ensures that it can withstand the stresses of intensive excavation work, making it a reliable choice for various applications.

The durability of the Q355B steel significantly reduces the risk of cracking, allowing operators to work with confidence in demanding environments. This resilience translates to longer service life and lower maintenance costs, further solidifying the telescopic arm's reputation as a top-tier product. With its combination of advanced materials and robust design, Kaiping Zhonghe Machinery's telescopic boom arm is a preferred option for professionals seeking efficiency and reliability in their excavation projects.

Excavator Teledipper's Show:



Production details of one set of hydraulic telescoping excavator:



01 >>

Panel is cut by
CNC plasma
machine with
less deformation





《02

Tolerance within 5-10um, ensure the accuracy of hole

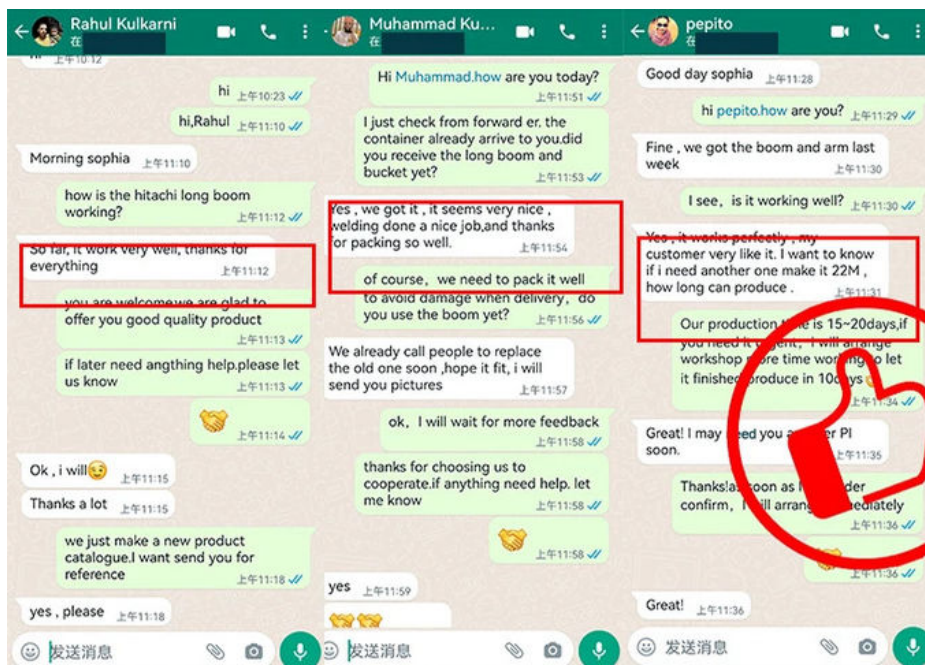
03》

GMAW-Gas Metal Arc Welding



《04

Environmentally friendly verified spraying room. Professional and beautiful paint finish





Manufacturer of Excavator Arm and Boom

Whatsapp: +86 13822325403

Email: aria@excavatorboomarm.com
13822325403@163.com

Web: www.excavatorlongarm.com

Sales Manager



Kaiping Zhonghe Machinery is a big Manufacturer of Excavator Telescopic Arm

Welcome to contact for a big discount!

Whatsapp: wa.me/+8613822325403

Email: aria@excavatorboomarm.com
13822325403@163.com

Website link: www.excavatorlongarm.com



Jiangmen Kaiping Zhonghe Machinery Manufacturing Co., Ltd



+86 13822325403



aria@excavatorboomarm.com



excavatorlongarm.com

9 Huancui West Road, Cuishanhu New Area, Kaiping City, Guangdong Province, China