



10M Telescopic Arm For Excavator For Liugong 9250F With Bucket

Our Product Introduction

for more products please visit us on excavatorlongarm.com

Basic Information

- Place of Origin: Guangdong Province, China
- Brand Name: Zhonghe Machinery
- Certification: CE, patent, ISO
- Model Number: HB006
- Minimum Order Quantity: 1 set / piece
- Price: USD 300-USD8000
- Packaging Details: bubble / wooden cases / others as you request
- Delivery Time: 5-25/works
- Payment Terms: T/T, L/C or others as you request
- Supply Ability: 5 sets per week



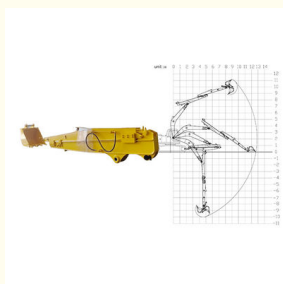
10m sliding arm for Liugong 9250F

Product Specification

- Service Life-span: Longer Service Life-span
- High Efficiency: Super High Efficiency
- Cylinders: Premium Cylinders
- Material: Shaogang Q355B
- Suitable Working Condition: Digging House Foundation
- Digging Depth(m): 8m 10m 12m 16m
- Highlight: **10M Telescopic Arm, Bucket Telescopic Arm, Liugong 9250F Telescopic Arm**



More Images



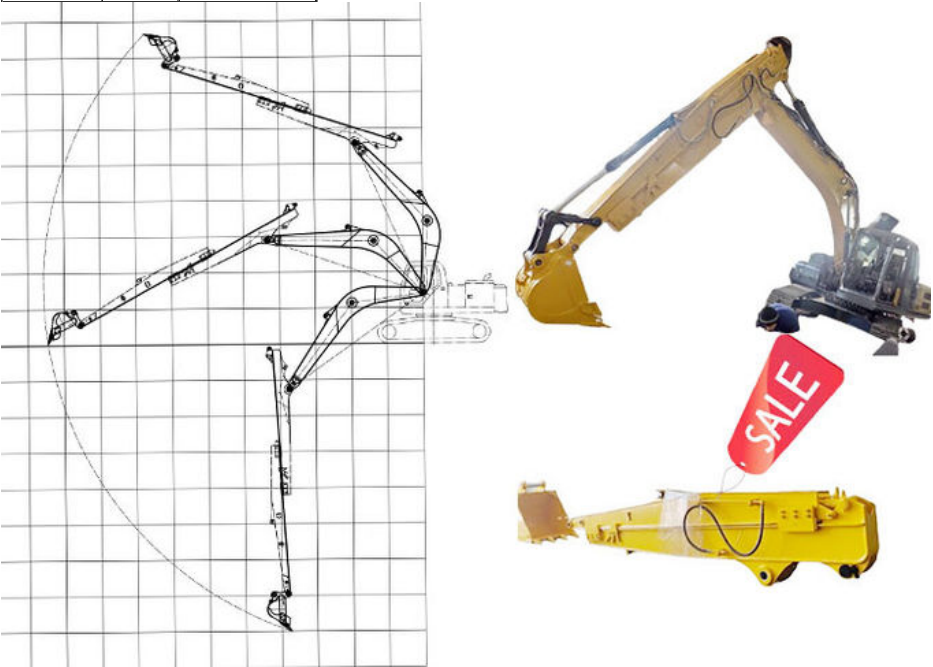
Product Description

Telescopic Arm for Excavator Versatility Tool for Digging House Foundation

The excavator telescopic arm is an ideal choice for digging house foundations due to its enhanced reach and versatility. Unlike standard arms, the telescopic arm excavator can extend significantly further, allowing operators to access deeper areas without needing to reposition the entire machine. This feature of telescopic boom excavator is particularly beneficial in tight spaces or when working on uneven terrain, where precision and flexibility are crucial.

Additionally, the longer digging depth provided by the telescopic arm excavator enables excavation of deeper foundations efficiently. This capability not only speeds up the construction process but also ensures that the foundation is adequately supported, catering to various soil conditions. As a result, using an excavator telescopic arm can lead to improved safety and structural integrity, making it a valuable tool for construction projects.

Excavator model(ton)	Bucket capacity(cbm)	Digging depth(m)
3-4T	0.1	4
6-8T	0.2	6
10-12T	0.35	8
20-27T	0.5-0.6	10
20-27T	0.45	12
30-36T	1.2	10
30-36T	1	12
30-36T	0.6	12





Sales Manager

Manufacturer of Excavator Arm and Boom

Whatsapp: +86 13822325403

Email: aria@excavatorboomarm.com
13822325403@163.com

Web: www.excavatorlongarm.com



Kaiping Zhonghe Machinery is a big Manufacturer of Excavator telescopic arm:

Welcome to contact for a big discount!

Whatsapp: wa.me/+8613822325403

Email: aria@excavatorboomarm.com
13822325403@163.com

Website link: www.excavatorlongarm.com



Jiangmen Kaiping Zhonghe Machinery Manufacturing Co., Ltd



+86 13822325403



aria@excavatorboomarm.com



excavatorlongarm.com

9 Huancui West Road, Cuishanhu New Area, Kaiping City, Guangdong Province, China