



Multi-layer Reinforced Excavator Telescopic Arm For Cat Hitachi Komatsu

Our Product Introduction

Basic Information

- Place of Origin: China, Guangdong Province
- Brand Name: Kaiping Zhonghe Machinery Manufacturing Co. Ltd
- Certification: CE, patent, ISO
- Model Number: 13-24m
- Minimum Order Quantity: 1 set / piece
- Price: USD 179.00-USD3999.00
- Packaging Details: bubble / wooden cases
- Delivery Time: 5-20/works
- Payment Terms: T/T, L/C or others as you request
- Supply Ability: 5 sets per week



Product Specification

- Features: Telescopic
- Material: HG785
- Service Life-span: Longer Service Life-span
- Efficiency: High Efficiency
- Suitable Excavator: 6 Ton To 50ton Excavator
- Bucket: Available
- Highlight: Hitachi Excavator telescopic arm,
Komatsu Excavator telescopic arm,
Cat Excavator telescopic arm



More Images



for more products please visit us on excavatorlongarm.com

Product Description

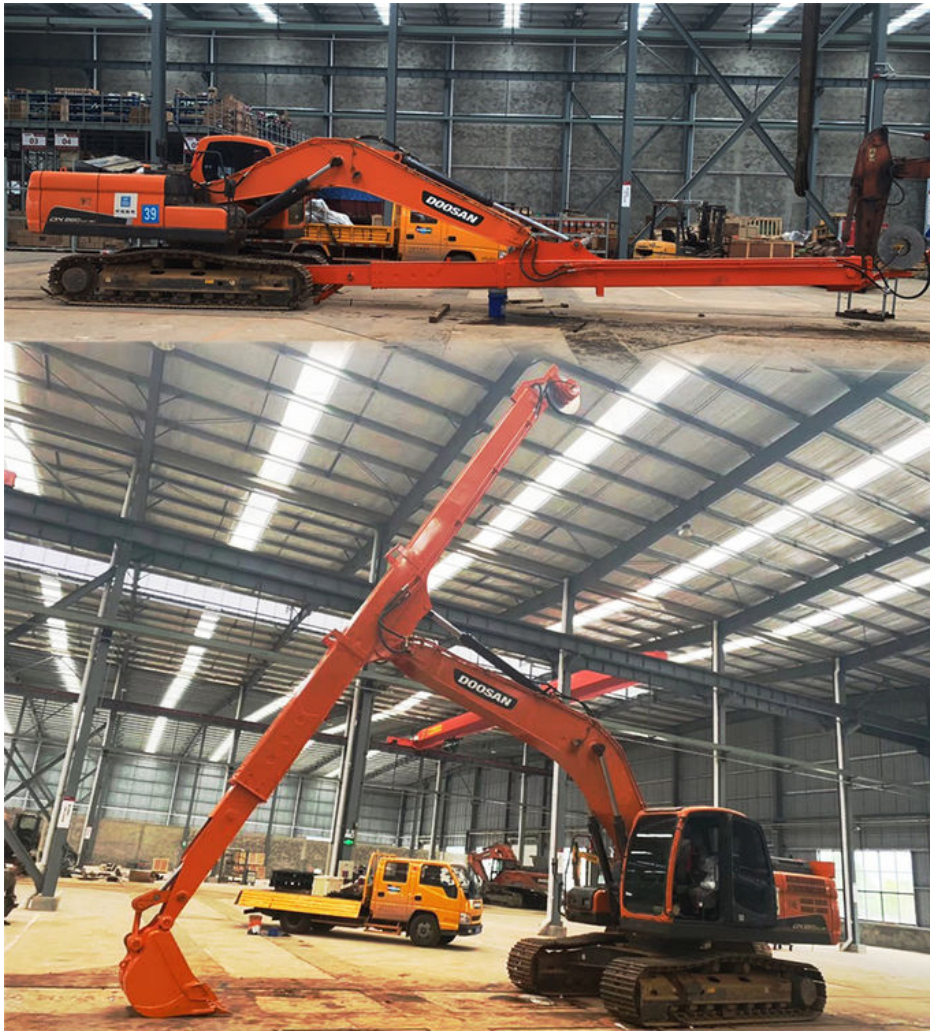
Excavator Telescopic Arm for Excavator Adopts Double Oil Seal Design Prolong the service life-span

The excavator telescopic arm is engineered with a sophisticated telescopic mechanism that enhances versatility and reach in various applications. One of its standout features is the cylinder, which incorporates a double oil seal design. The innovative approach of telescopic arm for excavator not only improves performance but also significantly extends the lifespan of the cylinder compared to offerings from other suppliers.

By utilizing a double oil seal, the excavator telescopic arm effectively minimizes the risk of oil leakage and contamination, ensuring smooth operation over extended periods. The telescopic arm for excavator's durability translates to reduced maintenance needs and lower operational costs, making it an ideal choice for demanding work environments. Operators of telescopic arm for excavator can rely on this robust design to maintain high efficiency and productivity throughout their projects.

Excavator model(ton)	Bucket capacity(cb m)	Bucket cylinder	Digging Depth(m)
20-27T	0.4-0.6	20T	14
20-27T	0.8	30T	14
30-36T	1	35T	14
30-36T	0.8	30T	14
30-36T	1	35T	15







01»

Panel is cut by
CNC plasma
machine with
less deformation



«02

Tolerance within
5-10um, ensure
the accuracy of
hole



03»

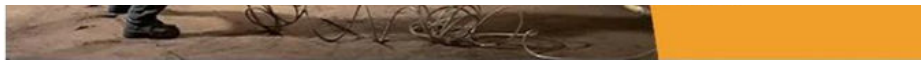
GMAW-Gas
Metal Arc
Welding



«04

Environmentally
friendly verified
spraying room.
Professional and
beautiful paint
finish





Sales Manager

Manufacturer of Excavator Arm and Boom

Whatsapp: +86 13822325403

Email: aria@excavatorboomarm.com
13822325403@163.com

Web: www.excavatorlongarm.com



Kaiping Zhonghe Machinery is a big Manufacturer of Excavator telescopic arm

Welcome to contact for a big discount!

Whatsapp: wa.me/+8613822325403

Email: aria@excavatorboomarm.com

13822325403@163.com

Website link: www.excavatorlongarm.com



Jiangmen Kaiping Zhonghe Machinery Manufacturing Co., Ltd



+86 13822325403



aria@excavatorboomarm.com



excavatorlongarm.com

9 Huancui West Road, Cuishanhu New Area, Kaiping City, Guangdong Province, China