



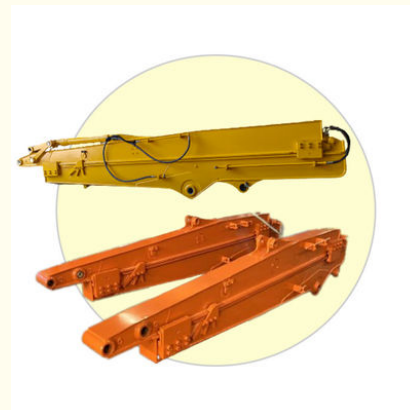
Better Welding Excavator Telescopic Arm Ningbo Connectors Telescopic

Our Product Introduction

for more products please visit us on excavatorlongarm.com

Basic Information

- Place of Origin: Guangdong province, China
- Brand Name: Kaiping Zhonghe Machinery
- Certification: CE, patent, ISO
- Model Number: HB0012
- Minimum Order Quantity: 1 set / piece
- Price: USD 118.00-USD4599.00
- Packaging Details: bubble, wooden case
- Delivery Time: 7-35/works
- Payment Terms: T/T, L/C
- Supply Ability: 6 sets per week

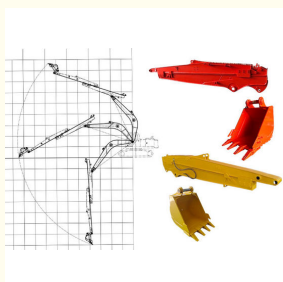


Product Specification

- Features: Telescopic, Can Reach Every Depth
- Condition: Brand New
- Material: Shaogang Q355B Or Others As You Request
- Digging Depth: 6m, 8m, 10m, 12m
- Bucket Capacity: 0.1 Cbm - 1cbm
- Apply To: 6ton - 50ton
- Suitable Working Conditions: Foundation Pit, Basement, Narrow Places
- Warranty: 6 Months
- Highlight: **Excavator Telescopic Arm,
Ningbo Connectors Telescopic Arm,
Better Welding Telescopic Arm**



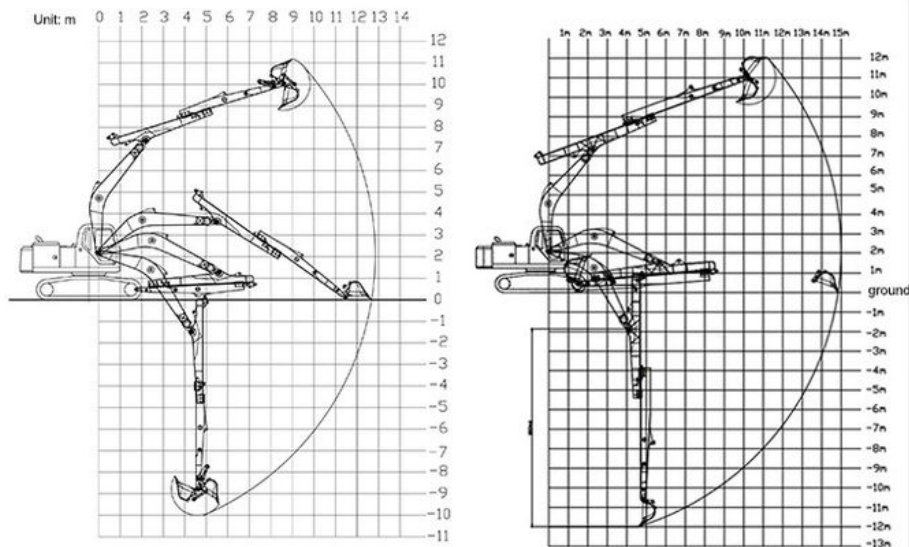
More Images



Excavator Telescopic Arm with Better Connectors Bear Huge Stress

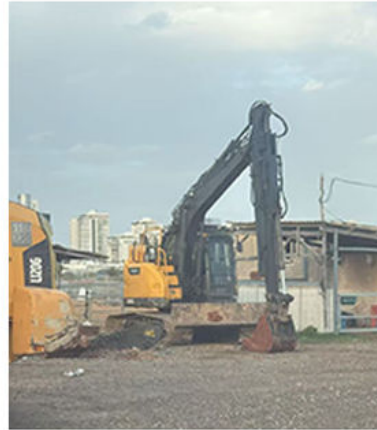
Kaiping Zhonghe Machinery's excavator telescopic arm boasts high efficiency, making it an invaluable asset for construction projects. Telescopic arm for excavator's effectiveness is complemented by the use of top-quality NingBo Connectors, which are specifically designed to withstand significant stress and strain. Telescopic arm excavator's connectors are known for their reliability, ensuring that the equipment operates smoothly even under demanding conditions.

The combination of a highly effective telescopic arm and durable connectors enhances the overall performance of the excavator. By minimizing the likelihood of failures, Kaiping Zhonghe Machinery ensures that operators can focus on their tasks without interruptions. Excavator telescopic boom reliability not only improves productivity but also contributes to safer working environments on construction sites, making it a preferred choice for contractors aiming for excellence.

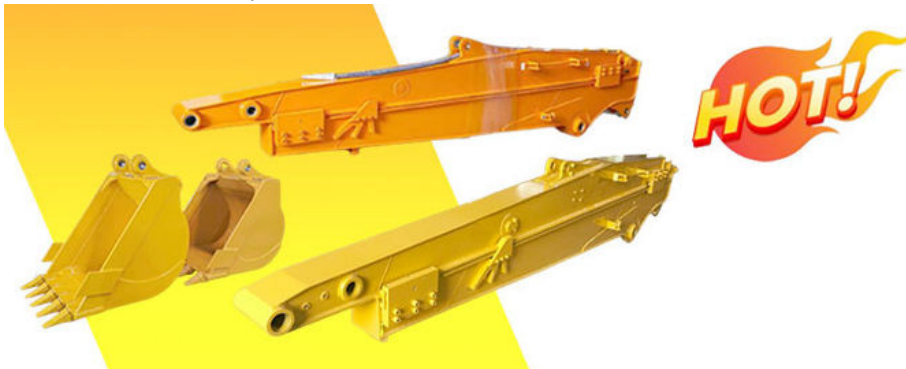


Please send your excavator model to us. Suitable length will be sent according to your excavator model.
Whatsapp: [8613822325403](https://wa.me/8613822325403) Email: aria@excavatorboomarm.com

Excavator model(ton)	bucket capacity (cbm)	Maximum Digging Depth
3-4 ton	0.1 cbm	4m
6-8 ton	0.2 cbm	6m
10-12 ton	0.35cbm	8m
20-27 ton	0.5 cbm	10m
30-36 ton	0.6 cbm	12m



More details of telescopic arm for excavator:



The double limit design of the sliding cylinder prevents cylinder jolting and over-pulling.

Telescopic cylinder double oil seal design extends the service life of the cylinder

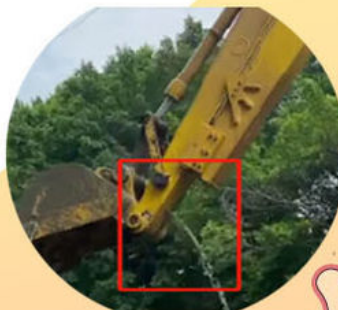




Cover plates are cut from a whole piece but not spliced, to be more firm and not easy to deform.

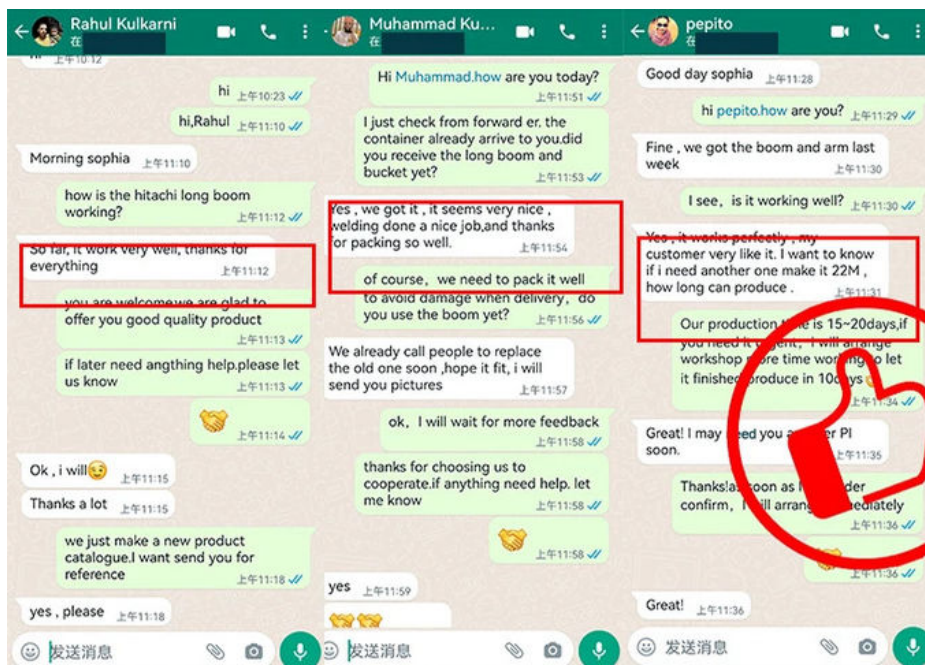


Built-in wear-resistant plastic slider, Easy to replace and maintain



The tube has leakage holes to reduce water accumulation inside the arm tube, thereby reducing internal corrosion.





Established in 2018, Kaiping Zhonghe Machinery is a combination of manufacturing and trading. Our products, including excavator long reach booms, demolition arms, 2-3 sections telescopic arms, tunnel arms, standard/rock buckets, grapples, and rippers, have been selling well in more than 40 countries and areas.

We are located in Guangdong Province, China. A 18000 m² 50 welding workers with over 7 years experience, 30 senior designers, and a high-tech R&D team (10+ years on customization, 100+ technical patents), strict production system (6+ years quality control and cost control) and warm-hearted service team. Our annual output of various types of excavator boom arms can reach up to 600 sets.

We strive to uphold our core principles of "Merit Quality, Sincerity Management, and Customer Satisfaction".



Sales Manager

Manufacturer of Excavator Arm and Boom

Whatsapp: +86 13822325403

Email: aria@excavatorboomarm.com
13822325403@163.com

Web: www.excavatorlongarm.com



Welcome to contact Aria for a big discount!

Whatsapp: [+86 13822325403](https://wa.me/8613822325403)

Email: aria@excavatorboomarm.com
13822325403@163.com



Jiangmen Kaiping Zhonghe Machinery Manufacturing Co., Ltd



+86 13822325403



aria@excavatorboomarm.com



excavatorlongarm.com

9 Huancui West Road, Cuishanhu New Area, Kaiping City, Guangdong Province, China