



Shaogang Q355B Excavator Telescopic Arm With Standard Bucket Better Welding Telescopic Performance

Our Product Introduction

for more products please visit us on excavatorlongarm.com

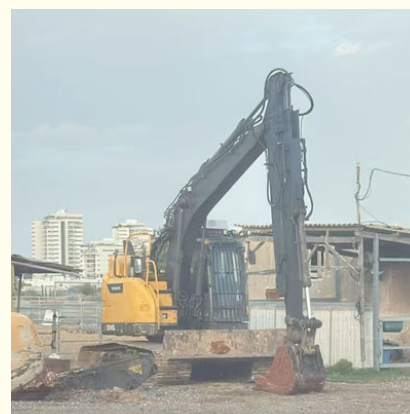
Basic Information

- Place of Origin: Guangdong province, China
- Brand Name: Kaiping Zhonghe Machinery Manufacturing Co. Ltd
- Certification: CE, patent, ISO
- Model Number: HB009
- Minimum Order Quantity: 1 set / piece
- Price: USD 138.00-USD4799.00
- Packaging Details: bubble, wooden case
- Delivery Time: 7-20/works
- Payment Terms: T/T, L/C
- Supply Ability: 6 sets per week

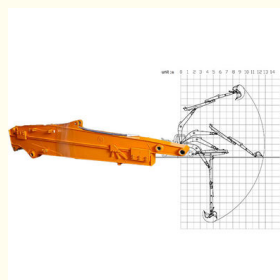


Product Specification

- Features: Telescopic Arm, Carry Bucket
- Material: Shaogang Q355B
- Digging Depth: 6m, 8m, 10m, 12m
- Suitable Working Conditions: Digging Foundation Pit, Basement, Narrow Places
- Warranty: 6 Months
- Condition: New
- Apply To: 6ton - 50ton
- Bucket Capacity: 0.1 Cbm - 1cbm
- Highlight: Shaogang Q355B Excavator Telescopic Arm, Better Welding Excavator Telescopic Arm, Standard Bucket Excavator Telescopic Arm



More Images

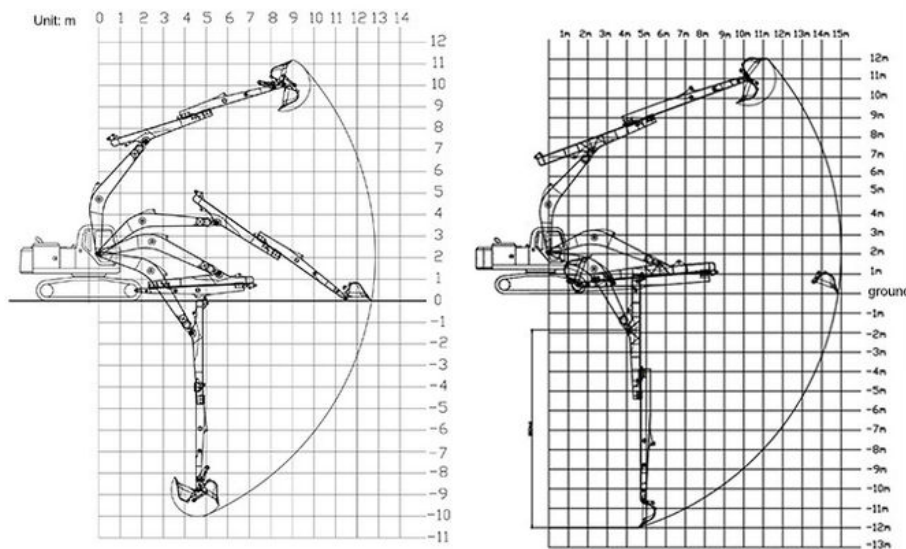


Product Description

Excavator Telescopic Arm Heavy Duty Tool In Digging

Kaiping Zhonghe Machinery's excavator telescopic arm is expertly engineered for the specific needs of digging house foundations, delivering both effectiveness and flexibility. Its innovative telescopic capability provides adjustable reach, making it perfectly suited for reaching various depths required during excavation. This feature empowers operators to execute precise digging operations, thereby boosting the overall efficiency of construction endeavors.

In addition, the slider on the telescopic arm is reinforced to enhance its strength and longevity. This construction improvement minimizes wear and tear during use, significantly prolonging the machinery's operational life. By choosing Kaiping Zhonghe Machinery's excavator, contractors gain access to a reliable tool that meets the rigorous demands of foundation digging, ensuring projects are completed efficiently and on schedule.



Key word: excavator telescopic arm, telescopic arm for excavator, telescopic arm excavator, excavator section telescopic arm, telescopic boom excavator, excavator telescopic boom

Excavator model(ton)	bucket capacity (cbm)	Maximum Digging Depth
3-4 ton	0.1 cbm	4m
6-8 ton	0.2 cbm	6m
10-12 ton	0.35cbm	8m
20-27 ton	0.5 cbm	10m
30-36 ton	0.6 cbm	12m

Please send your excavator model to us. Suitable length will be sent according to your excavator model.





The double limit design of the sliding cylinder prevents cylinder jolting and over-pulling.



Telescopic cylinder double oil seal design extends the service life of the cylinder



Cover plates are cut from a whole piece but not spliced, to be more firm and not easy to deform.

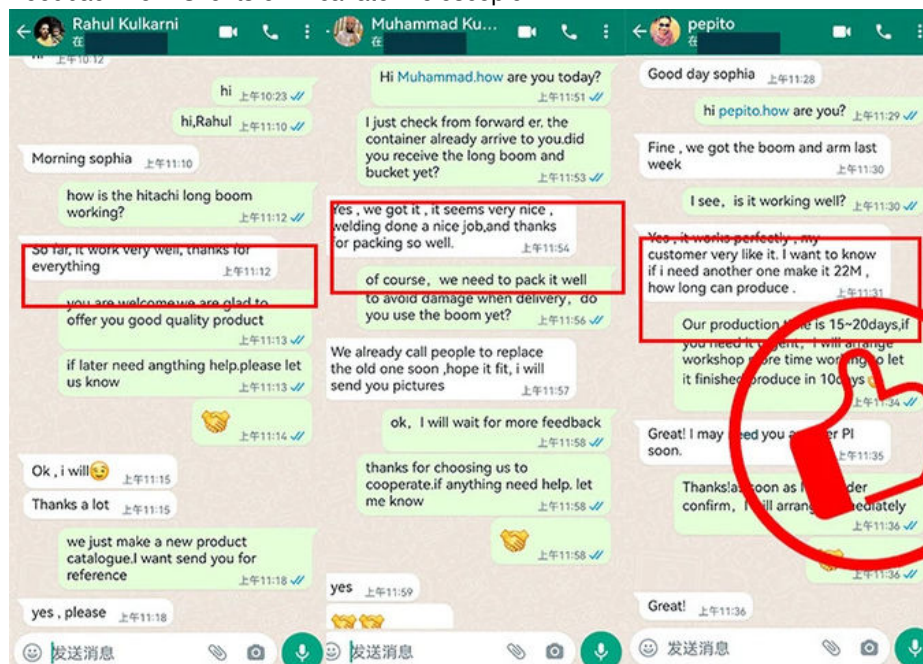


Built-in wear-resistant plastic slider, Easy to replace and maintain



The tube has leakage holes to reduce water accumulation inside the arm tube, thereby reducing internal corrosion.

Feedback from Clients of Excavator Telescopic Arm:





Sales Manager

Manufacturer of Excavator Arm and Boom

Whatsapp: +86 13822325403

Email: aria@excavatorboomarm.com
13822325403@163.com

Web: www.excavatorlongarm.com



Welcome to contact Aria for a big discount!

Whatsapp: [+86 13822325403](https://wa.me/8613822325403)

Email: aria@excavatorboomarm.com
13822325403@163.com



Jiangmen Kaiping Zhonghe Machinery Manufacturing Co., Ltd



+86 13822325403



aria@excavatorboomarm.com



excavatorlongarm.com

9 Huancui West Road, Cuishanhu New Area, Kaiping City, Guangdong Province, China