



Long Reach Use Excavator Telescopic Arm Q355B Better Welding

Our Product Introduction

for more products please visit us on excavatorlongarm.com

Basic Information

- Place of Origin: Guangdong province, China
- Brand Name: Kaiping Zhonghe Machinery
- Certification: CE, patent, ISO
- Model Number: HB0016
- Minimum Order Quantity: 1 set / piece
- Price: USD 138.00-USD4899.00
- Packaging Details: bubble, wooden case
- Delivery Time: 7-30/works
- Payment Terms: T/T, L/C
- Supply Ability: 6 sets per week



Product Specification

- Features: Telescopic, Long Reach
- Material: Shaogang Q355B, Better Steel Material
- Apply To: 6ton - 50ton
- Digging Depth: 6m, 8m, 10m, 12m
- Bucket Capacity: 0.1 Cbm - 1cbm
- Warranty: 6 Months For Arm, 3 Months For Bucket
- Condition: New, Brand New
- Suitable Working Conditions: Foundation Pit, Basement, Narrow Places
- Highlight: Long Reach Excavator Telescopic Arm,
Q355B Excavator Telescopic Arm,
Better Welding Excavator Telescopic Arm



More Images

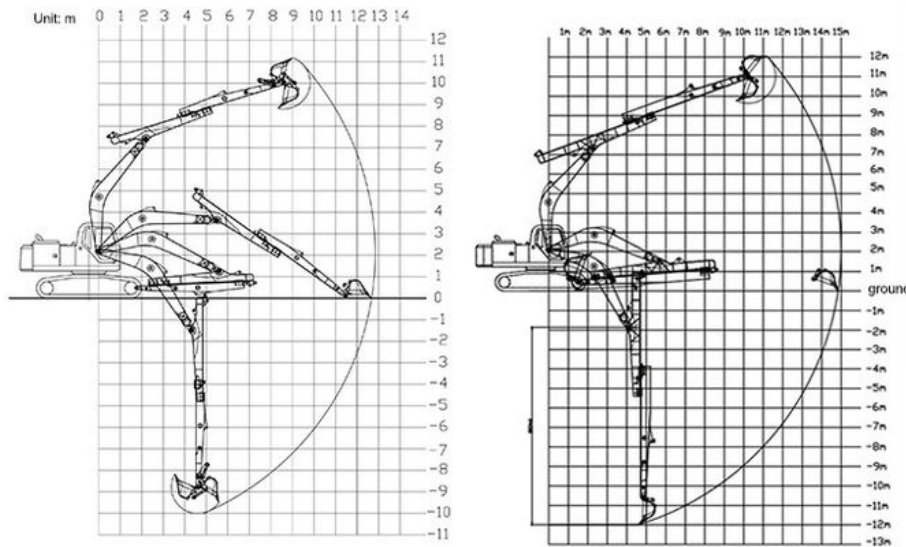


Product Description

Excavator Telescopic Arm--A Versatility Tool in Digging House Foundation

Kaiping Zhonghe Machinery's excavator telescopic arm is exceptionally designed for digging house foundations, offering both efficiency and versatility. Excavator telescopic arm's unique telescopic feature allows for adjustable reach, making it ideal for accessing various depth levels during excavation. Excavator telescopic arm's adaptability ensures that operators can perform precise digging tasks, enhancing the overall productivity of construction projects.

Furthermore, the slider of the telescopic arm is reinforced, contributing to its durability and longevity. This enhancement not only reduces wear and tear during operation but also significantly extends the service life of the machinery. By investing in Kaiping Zhonghe Machinery's excavator telescopic arm, contractors can rely on a robust solution that meets the demanding requirements of foundation work, ultimately leading to more successful and timely project completions.

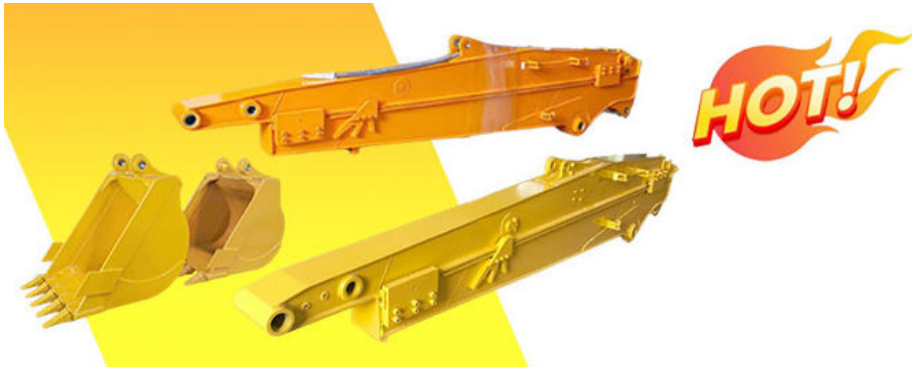


Please send your excavator model to us. Suitable length will be sent according to your excavator model.

Excavator model(ton)	bucket capacity (cbm)	Maximum Digging Depth
3-4 ton	0.1 cbm	4m
6-8 ton	0.2 cbm	6m
10-12 ton	0.35cbm	8m
20-27 ton	0.5 cbm	10m
30-36 ton	0.6 cbm	12m



More details of our excavator sliding arm / telescopic excavator:



The double limit design of the sliding cylinder prevents cylinder jolting and over-pulling.

Telescopic cylinder double oil seal design extends the service



Seal design extends the service life of the cylinder

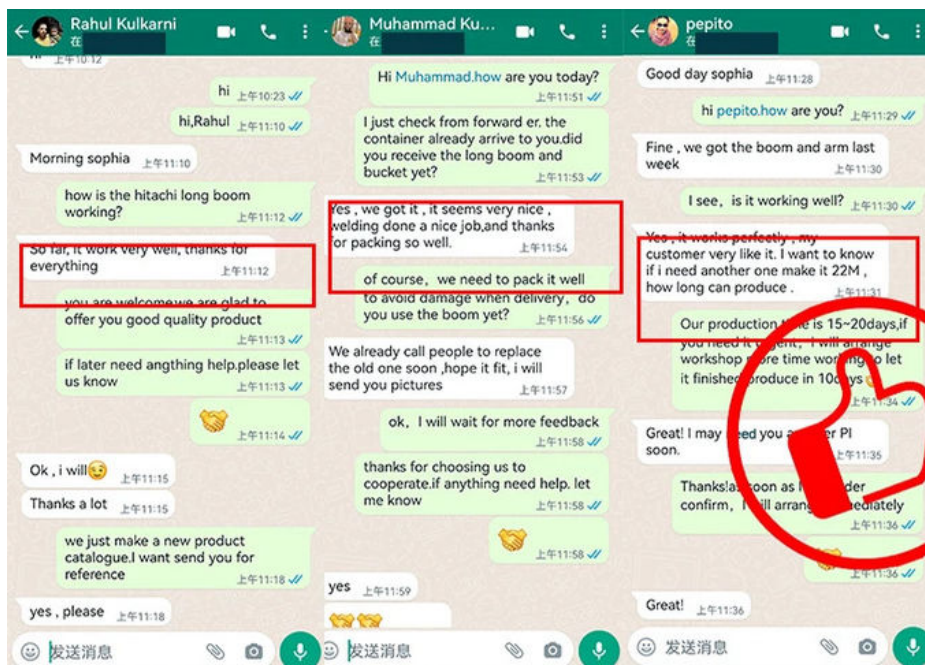


Cover plates are cut from a whole piece but not spliced, to be more firm and not easy to deform.

Built-in wear-resistant plastic slider, Easy to replace and maintain



The tube has leakage holes to reduce water accumulation inside the arm tube, thereby reducing internal corrosion.





Manufacturer of Excavator Arm and Boom

Whatsapp: +86 13822325403

Email: aria@excavatorboomarm.com
13822325403@163.com

Web: www.excavatorlongarm.com

Sales Manager








Welcome to contact Aria for a big discount!

Whatsapp: +86 13822325403
Email: aria@excavatorboomarm.com
13822325403@163.com



Jiangmen Kaiping Zhonghe Machinery Manufacturing Co., Ltd



+86 13822325403



aria@excavatorboomarm.com



excavatorlongarm.com

9 Huancui West Road, Cuishanhu New Area, Kaiping City, Guangdong Province, China