



## BS900E Excavator Telescopic Arm With Clamshell Bucket Welding Multi-strand Wire Ropes

Our Product Introduction

for more products please visit us on [excavatorlongarm.com](http://excavatorlongarm.com)

### Basic Information

- Place of Origin: China, Guangdong Province
- Brand Name: Zhonghe Machinery
- Certification: CE, patent, ISO
- Model Number: 25m 28m 30m 32m
- Minimum Order Quantity: 1 set / piece
- Price: USD 179.00-USD6899.00
- Packaging Details: bubble / wooden cases / others as you request
- Delivery Time: 5-25/works
- Payment Terms: T/T, L/C
- Supply Ability: 5 sets per week

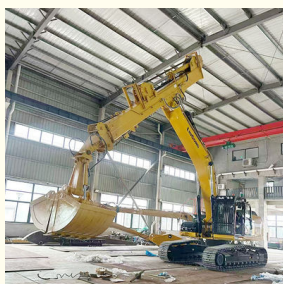


### Product Specification

- Warranty: 6 Months To One Year
- Suitable Excavator: Hitachi Komatsu Cat Sany
- Suitable Working Condition: Digging Sand Soil Silt Gravel
- Quality: Premium Quality Wear Resistant
- Material: BS900E
- Wire Ropes: Multi-strand Wire Ropes
- Highlight: **Multi-strand Wire Ropes Telescopic Arm, BS900E Excavator Telescopic Arm, Clamshell Bucket Telescopic Arm**



### More Images



## Product Description

### Excavator telescopic arm with Multi-strand Wire Rope--bear huge stress

Kaiping Zhonghe Machinery's excavator telescopic arm is particularly well-suited for digging house foundations, offering both precision and extended reach. This specialized design allows operators to effectively tackle various depths and site conditions, making it an essential tool for residential construction projects. The telescopic arm's capability to extend further enhances its versatility, enabling efficient excavation without the need for repositioning the entire machine frequently.

A key feature of this telescopic arm is its use of multi-strand wire ropes, which are engineered to withstand significant stress without compromising safety or performance. This robust construction minimizes the risk of failure during demanding tasks, ensuring a smooth operation throughout the digging process. Moreover, the high working effectiveness of Kaiping Zhonghe Machinery's excavator telescopic arm translates into increased productivity, allowing contractors to complete projects more efficiently and effectively, ultimately contributing to a more successful construction timeline.







Digging depth of excavator telescopic arm(m)  
 Suitable excavator model(ton)  
 Capacity of the clamshell bucket(cbm)

31-32m	40-50T	2.2cbm	7.2T
		2.5cbm	7.2T







Welcome to contact for a big discount!

Whatsapp: [wa.me/+8613822325403](https://wa.me/+8613822325403)

Email: [aria@excavatorboomarm.com](mailto:aria@excavatorboomarm.com)  
[13822325403@163.com](mailto:13822325403@163.com)



**Jiangmen Kaiping Zhonghe Machinery Manufacturing Co., Ltd**



+86 13822325403



[aria@excavatorboomarm.com](mailto:aria@excavatorboomarm.com)



[excavatorlongarm.com](http://excavatorlongarm.com)

9 Huancui West Road, Cuishanhu New Area, Kaiping City, Guangdong Province, China