



Grapple Telescopic Arm Sand Excavator Telescope 6 Months Warranty

Our Product Introduction

for more products please visit us on excavatorlongarm.com

Basic Information

- Place of Origin: Guangdong Province, China
- Brand Name: Kaiping Zhonghe Machinery Manufacturing Co. Ltd
- Certification: CE, Patent, ISO
- Model Number: ZH-06
- Minimum Order Quantity: 1 set / piece
- Price: USD 199.00-USD2999.00
- Packaging Details: bubble / wooden cases / others as you request
- Delivery Time: 4-35/works
- Payment Terms: T/T, L/C or others as you request
- Supply Ability: 7 sets per week



Product Specification

- Features: High Effective And Longer Life-span
- Digging Depth(m): 20m 25m 30m 32m 35m
- Material: BS900E, Lighter And Stronger
- Warrantly: 6 Months To 1 Year
- Maintenance: Convenient Maintenance
- Front Attachment: Clamshell Bucket / Grapple
- OEM/ODM: YES
- After-sales Service: YES
- Highlight: Digging Telescopic Arm,
Excavator Telescopic Arm,
Grapple Clamshell Bucket Telescopic Arm



More Images

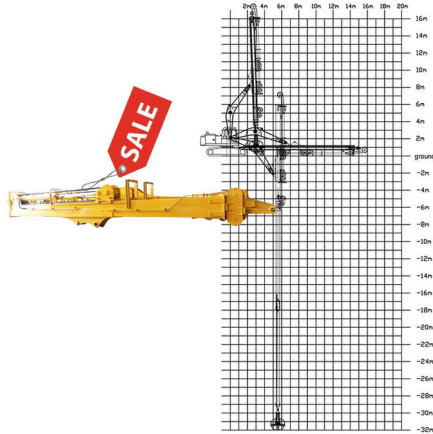


Product Description

Premium Grapple Telescopic Arm Sand Excavator Telescope

Introduction of Zhonghe Machinery's grapple telescopic arm

Zhonghe Machinery's grapple telescopic arm is a cutting-edge solution designed for enhanced material handling and versatility in various industrial applications. Engineered with precision, this innovative arm features a telescopic design that allows for extended reach and adaptability, making it ideal for tasks such as lifting, stacking, and transporting heavy loads. With robust construction and advanced hydraulic systems, the grapple arm ensures efficiency and reliability, optimizing operational performance in construction, forestry, and waste management sectors. Whether used in rugged environments or urban settings, Zhonghe's grapple telescopic arm delivers exceptional control and durability, setting a new standard in machinery design.



Specifications of Zhonghe Machinery's excavator telescopic boom factory

Digging Depth(m)	Excavator Model(ton)	Bucket Capacity(cbm)
10	10-15T	0.2
12		0.2
12	20-25T	0.6
14		0.4
16		0.4
18		0.4
20	26-28	0.6
20-22	30-33T	1.5
	35-38T	
	30-33T	
	35-38T	
25	35-38T	2.2
	40-50T	
26-30	36-50T	1.5
		1.5
		2
		2
		2.2
		2.2
	40-50T	2.2
31-32	40-50T	2.2
		2.5





Contact Us!



KAIPING ZHONGHE MACHINERY MANUFACTURING CO. LTD



Aria

Whatsapp: +86 13822325403

Email: aria@excavatorlongarm.com

Web: www.excavatorlongarm.com



Jiangmen Kaiping Zhonghe Machinery Manufacturing Co., Ltd



+86 13822325403



aria@excavatorlongarm.com



excavatorlongarm.com

9 Huancui West Road, Cuishanhu New Area, Kaiping City, Guangdong Province, China