



Excavator Telescopic Arm With Grapple Clamshell Bucket For Digging

Our Product Introduction

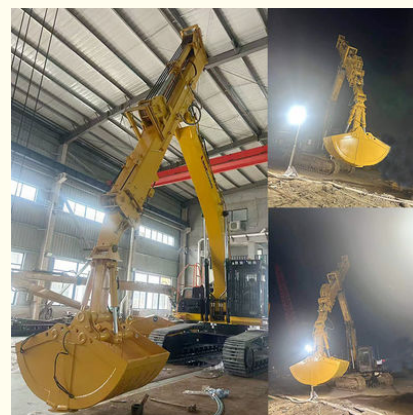
Basic Information

- Place of Origin: China, Guangdong Province
- Brand Name: Kaiping Zhonghe Machinery Manufacturing Co. Ltd
- Certification: CE, patent, ISO
- Model Number: 25m 28m 30m 32m
- Minimum Order Quantity: 1 set / piece
- Price: USD 199.00-USD2999.00
- Packaging Details: bubble / wooden cases / others as you request
- Delivery Time: 4-35/works
- Payment Terms: T/T, L/C or others as you request
- Supply Ability: 7 sets per week

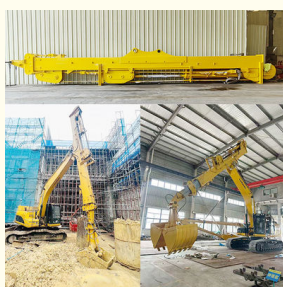


Product Specification

- Features: High Effective And Longer Life-span
- Digging Depth(m): 20m 25m 30m 32m 35m
- Material: BS900E, Lighter And Stronger
- Warrantly: 6 Months To 1 Year
- Maintenance: Convenient Maintenance
- Front Attachment: Clamshell Bucket / Grapple
- Highlight: **Digging Telescopic Arm,
Excavator Telescopic Arm,
Grapple Clamshell Bucket Telescopic Arm**



More Images



for more products please visit us on excavatorlongarm.com

Product Description

Excavator Telescopic Arm--Lighter and Stronger Material : BS900E Material

Kaiping Zhonghe Machinery's excavator telescopic arm is designed with a focus on both strength and weight efficiency, utilizing advanced BS900E material. This innovative choice of material not only makes the arm significantly lighter but also enhances its overall strength, allowing for improved performance in various excavation tasks. The reduced weight contributes to better fuel efficiency and maneuverability, making it a practical option for operators who need to maximize their productivity on the job site.

In addition to its superior material properties, the welding quality of the telescopic arm is exceptional, ensuring that it is less prone to cracking and wear over time. This attention to detail in the manufacturing process guarantees a longer service life, providing operators with a reliable tool that can withstand the rigors of demanding work environments. As a result, Kaiping Zhonghe Machinery's excavator telescopic arm not only meets the needs of modern construction but also offers long-term value through its durability and performance.

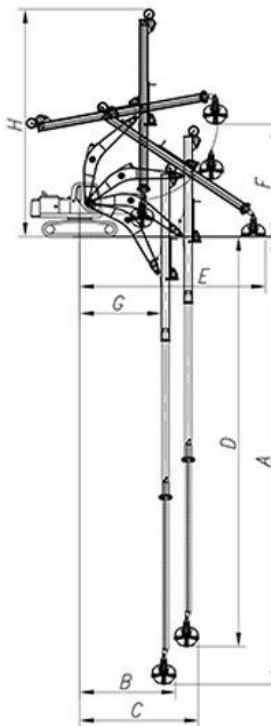
Some specs of one set of excavator telescopic arm:

Digging depth(m)

Excavator model(ton)

Capacity of clamshell bucket(cbm)

26-30m	36-50T	1.5cbm
		1.5cbm
		2cbm
		2cbm
		2.2cbm
		2.2cbm
	40-50T	2.2cbm







Welcome to contact for a big discount!

Whatsapp: wa.me/+8613822325403

Email: aria@excavatorboomarm.com

13822325403@163.com



Jiangmen Kaiping Zhonghe Machinery Manufacturing Co., Ltd



+86 13822325403



aria@excavatorboomarm.com



excavatorlongarm.com

9 Huancui West Road, Cuishanhu New Area, Kaiping City, Guangdong Province, China