



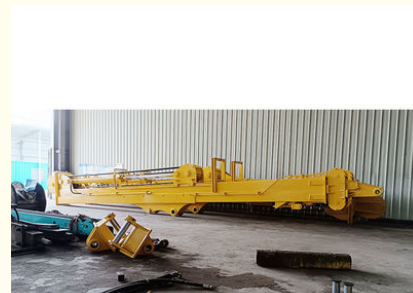
Multi-strand Wire Rope Excavator Telescopic Arm BS900E Material Lighter

Our Product Introduction

for more products please visit us on excavatorlongarm.com

Basic Information

- Place of Origin: China, Guangdong Province
- Brand Name: Kaiping Zhonghe Machinery Manufacturing Co. Ltd
- Certification: CE, ISO, Patent
- Model Number: SSB009
- Minimum Order Quantity: 1 set / piece
- Price: USD 199.00-USD20099.00
- Packaging Details: bubble / wooden cases / others as you request
- Delivery Time: 5-25/works
- Payment Terms: T/T, L/C
- Supply Ability: 5 sets per week



Product Specification

- Material: BS900E Lighter And Stronger
- Wire Rope: Multi-strand Wire Rope
- Digging Length: 10m 12m 20m 25m 30m 32m
- Welding: Better Welding
- Quality: Premium
- Suitable Excavator: Hitachi Komatsu Sany Cat Etc
- Highlight: **BS900E Telescopic Arm,
Multi-strand Wire Rope Telescopic Arm,
Lighter Telescopic Arm**



More Images



Product Description

Excavator Telescopic Arm--Premium Tool in Digging House Foundation

Kaiping Zhonghe Machinery's excavator telescopic arm is a versatile tool designed for a wide range of applications, including digging house foundations and performing long-reach tasks. Excavator telescopic arm's innovative design allows for extended reach and enhanced maneuverability, making it suitable for both residential and commercial construction projects. Excavator telescopic arm's adaptability ensures that operators can efficiently tackle various digging depths and site conditions, increasing overall productivity.

Constructed from high-grade BS900E material, excavator telescopic arm is both lighter and stronger than traditional options, providing significant benefits in terms of performance and ease of use. The advanced material not only reduces the overall weight of the arm, allowing for better fuel efficiency, but also maintains exceptional strength and durability. With this combination of versatility and robust construction, Kaiping Zhonghe Machinery's excavator telescopic arm stands out as an essential tool for modern excavation needs.

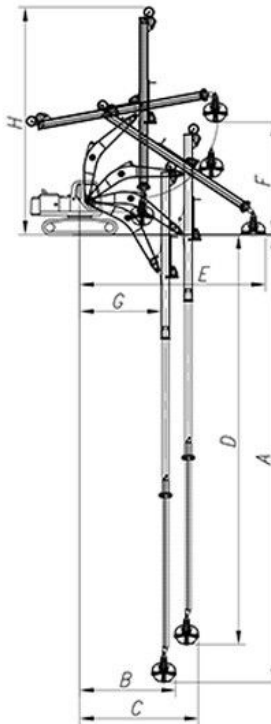
Digging Depth(m)

Suitable excavator model(ton)

Capacity of clamshell bucket(cbm)

20-22米	30-33T	1.5cbm
	35-38T	
25米	30-33T	2.2cbm
	35-38T	
	35-38T	2.2cbm
	40-50T	

Some pictures of excavator telescopic arm:







Welcome to contact for a big discount!

Whatsapp: wa.me/+8613822325403

Email: aria@excavatorboomarm.com

13822325403@163.com

Website link: www.excavatorlongarm.com



Jiangmen Kaiping Zhonghe Machinery Manufacturing Co., Ltd



+86 13822325403



aria@excavatorboomarm.com



excavatorlongarm.com

9 Huancui West Road, Cuishanhu New Area, Kaiping City, Guangdong Province, China